

Data Appliance 5.1 for ArcGIS®

Data Collection Update for Windows®
ArcGIS 10.1 for Server

Quick Start Guide

Powered by ArcGIS



132176 ESRI 11/2kq

Overview

The purpose of the Quick Start Guide is to step you quickly and easily through the update of a Data Appliance 5.1 collection. This Quick Start Guide is for use with ArcGIS® 10.1 for Server. The update consists of the following steps:

- Step 1** Unpack the Components
- Step 2** Delete ArcGIS Services
- Step 3** Shut Down Data Appliance for ArcGIS
- Step 4** Remove Old/Install New Data Collection
- Step 5** Power On Data Appliance for ArcGIS
- Step 6** Verify New Data Collection
- Step 7** Create Shares
- Step 8** Configure ArcGIS Server to Use Cache Directory
- Step 9** Publish Services
- Step 10** Use Services

Before Starting

ArcGIS Server 10 SP5 or higher is required for Data Appliance 5.1. If you are planning to upgrade to ArcGIS 10.1 for Server, Esri recommends you do so prior to installing your new collection. If you are using ArcGIS Server 10, please refer to the Quick Start Guide Data Appliance for ArcGIS 10 Data Collection Update for Windows. Services for Data Appliance for ArcGIS data collections installed on your Data Appliance for ArcGIS server will be unavailable during the installation process. This update should take approximately two hours to complete.

Note: If you are using locators and routing services from Data Appliance 5.0 for ArcGIS, since locators and routing services are no longer included as part of the Data Appliance with the 5.1 release, you need to migrate to StreetMap™ Premium for ArcGIS for your regions of interest prior to upgrading to Data Appliance 5.1 for ArcGIS. Additionally, if you were using the World Places Locator from Data Appliance 5.0, you need to upgrade to the World Places Locator that shipped with Data Appliance 5.1 on a separate DVD before upgrading to Data Appliance 5.1 for ArcGIS.

Important: It is imperative that care and precautions be taken when handling the data collection hard drives. The hard drives are sensitive to shock as well as electrostatic discharge. Make sure precautions are taken to eliminate any built-up static. The use of a grounding strap is highly recommended while handling the hard drives.

1 Unpack the Components

Your shipment contains one of the following Data Appliance for ArcGIS collections: World Premier Collection, World Small-Scale Collection, North America Collection, or Europe Collection; a collection consists of two or more drives that make up a single RAID volume. Each drive is labeled with the collection name and version.

2 Delete ArcGIS Services

To update the Data Appliance for ArcGIS collections, ArcGIS Services that utilize the Data Appliance 5.0 services must be deleted from ArcGIS Server before you disconnect the Data Appliance 5.0.

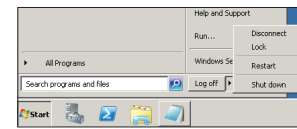
- A. Log in to ArcGIS Server using the Data Appliance for ArcGIS data account with administrative privileges.
- B. Start ArcGIS Server Manager and log in using your account.
- C. Click **Services > Manage Services**.
- D. Check each service to select the services to stop.
- E. Locate the service in the Services module and click **Delete**. The service is deleted from your server.

Basemap Collection Services	World Imagery Collection Services	World Collection Services
Map Services World_Boundaries_and_Places World_Street_Map World_Topo_Map World_Transportation Geocode services TA_Address_EU TA_Address_NA_10 Routing Services ESRI_Route_EU ESRI_Route_NA	Map Services World_Imagery USA_Topo_Maps	Map Services DeLorme_World_Base_Map Ocean_Basemap World_Boundaries_and_Places World_Boundaries_and_Places_Alternate World_Imagery World_Navigation_Charts World_Physical_Map World_Shaded_Relief World_Street_Map World_Transportation Globe Services ESRI_Elevation_World USGS_Elevation_US

3 Shut Down Data Appliance for ArcGIS

Although Data Appliance for ArcGIS has hot-swappable hard drive bays, hot swapping an entire data collection is not supported.

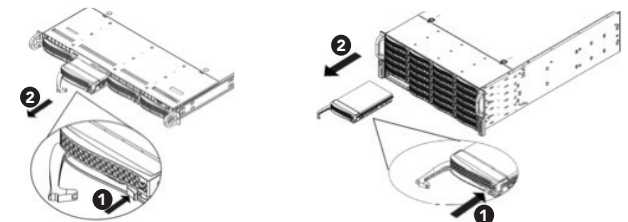
- A. Log in to Data Appliance for ArcGIS using the **Administrator** account.
- B. Click the **Start** menu, expand the **Shutdown** menu, and select **Shut down**.



- C. Allow Data Appliance for ArcGIS to completely shut down.

4 Remove Old/Install New Data Collection

- A. With Data Appliance for ArcGIS powered off, remove the existing data collection hard drives from the Data Appliance for ArcGIS system.
- B. Place the removed hard drives in a secure and static-free location.
- C. Continue removing all hard drives for the collection to be updated. Do not leave any hard drive from the old data collection in Data Appliance for ArcGIS.



Depending on the configuration being serviced, use the above illustrations as guides, with 1U on the left and 4U on the right.

With Data Appliance for ArcGIS still powered off, install the new data collection hard drives into Data Appliance for ArcGIS. Note that the new hard drives are labeled as to what collection they belong to as well as the number of drives in the set, for example, World Premier Collection Drive 00 1 of 22.

Although it does not matter which slot a drive is installed in, it is recommended that drives be installed in order, starting from the top left, filling in the drive bays across a row, then proceeding to the row below.

- D. Note the label of the hard drive that is to be installed into Data Appliance for ArcGIS to find its position. Make sure all drives from each set are present. If you find that a drive is missing, **immediately stop the installation procedure and contact Cutting Edge Networked Storage technical support**.
- E. Insert the replacement drive tray into the chassis. Make sure to press the drive carrier handle closed until it clicks in place.
- F. Make sure all drives from all the data collections are installed in Data Appliance for ArcGIS.

5 Power On Data Appliance for ArcGIS

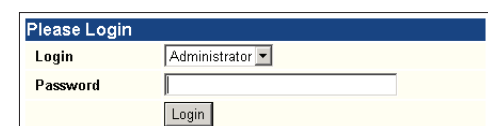
To turn on Data Appliance for ArcGIS, press the power button located on the front of the computer equipment rack.

Note: While booting up, the Windows 2008 Storage Server operating system performs a number of system checks to verify the integrity of the file system. During this time, the hard drive activity LEDs on Data Appliance for ArcGIS will blink. Please do not interrupt the system by powering it off or rebooting it.

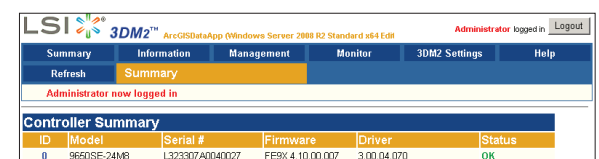
6 Verify New Data Collection

Before utilizing the data collection, the health of the RAID arrays must be verified. Data Appliance for ArcGIS ships with the LSI/3ware 3DM2 utility pre-installed. This utility will be used to verify the status of the datasets.

- A. Log in to Data Appliance for ArcGIS as **Administrator**.
- B. Click the **Start** menu, expand **All Programs**, and expand the **3ware** folder.
- C. Click **Connect to 3DM2** to start the 3DM2 utility.
- D. Disregard the security warning and click **Continue to website (not recommended)**.
- E. In the **Login** drop-down menu, select **Administrator**.



- F. Enter the password "3ware" and click **Login**.
- G. The 3DM2 summary screen is displayed. Note the Status column.

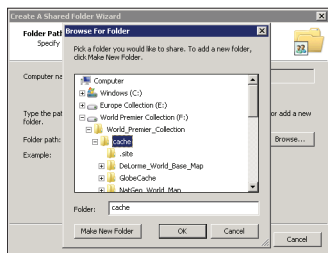


- H. If the status for all collections is **OK** and green, the arrays are healthy and ready to use. If something other than **OK** is displayed, click **Information** and click **Unit Information**. This displays the status of each RAID array (unit).
 - 1. If the status is **Verifying**, the datasets are ready to use. (Verify procedures are run on schedules to preemptively correct any errors.)
 - 2. If the status is **Degraded** or **Offline**, **immediately stop and contact Cutting Edge Networked Storage technical support**.
- I. Click **Logout** to log out of the 3DM2 utility. Once you have logged out, exit the web browser.

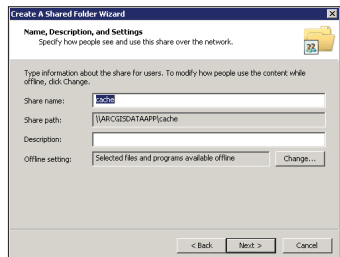
7 Create Shares

Data Appliance for ArcGIS must be configured to share the data collections.

- Log in to Data Appliance for ArcGIS as **Administrator**.
- Click **Start > Administrative Tools > Computer Management**.
- In the Computer Management application, click **Shared Folders** to expand the tree and right-click the **Shares** folder. Select **New Share**.
- In the Create A Shared Folder wizard, click **Next** to begin.
- For Folder path, click **Browse** and navigate to the hard drive with the data collection (usually drive E). Select the cache directory and click **OK**.



- Click **Next**.
- In the Name, Description, and Settings dialog box, enter the **Share name** for cache or source documents and enter the **Share path** for the appropriate directory.



- Click **Next**.
- Select the **Customize Permissions** option and click **Custom**.
- In the Customize Permissions window, click **Add**.
- Add the following users and groups if needed: Administrator and arcgis.
- Make sure the permissions for the users and groups are set to Full Control.
- Repeat steps 7C through 7L for the source documents share.

8 Configure ArcGIS Server to Use Cache Directory

ArcGIS 10.1 for Server maintains a list of directories in which it can find map and globe cache tiles. You need to explicitly add the Data Appliance cache directory to this list.

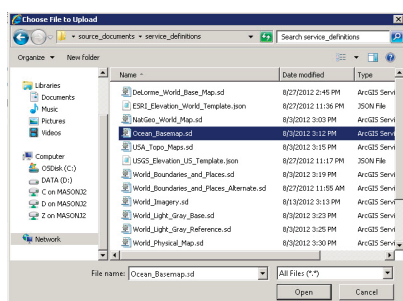
- Log in to ArcGIS Server using the Data Appliance for ArcGIS data account with administrative privileges.
- Start ArcGIS Server Manager and log in using your ArcGIS for Server account.
- Click the **Site** tab.
- In the **View** menu on the left, click **Directories**.
- Click **Add Directory** on the right below the Directories description.
- Enter a **Name**, for example, Cache. From the **Type** drop-down list, choose **Cache**.
- For **Location**, enter the **path** to the cache folder on the ArcGIS Data Appliance data collection you made when you created shares, for example, \\ARCGISDATAAPP\cache.
- You do not need to specify a Description, Cleaning Mode, or Maximum File Age.
- Click **Add** to add the directory.

9 Publish Services

The following instructions apply to map services. Information about globe services can be found in the help file on the *Data Appliance 5.1 for ArcGIS Help Documentation DVD* by opening `arcgis_data_appliance.pdf`.

Using ArcGIS Server Manager, you can publish a service definition file (.sd) as a service. To publish a service definition using Manager, follow these steps for each map service that you want to create:

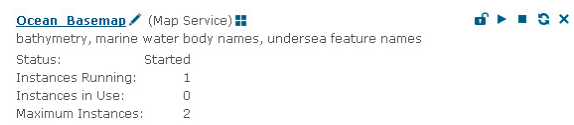
- Open ArcGIS Server Manager and log in.
- Click **Services > Manage Services > Publish Service**.
- Click the **browse** button to navigate to the `source_documents > service_definitions` folder on the Data Appliance data collection, for example, \\ARCGISDATAAPP\source_documents\service_definitions.
- Select the **service definition** you want to publish, for example, `Ocean_Basemap.sd`. See the Services Reference Guide for 5.1 at the end of this document for a list of the Data Appliance map services.



- Click **Next**.
- By default, the service definition is published to the server folder specified in the service definition configuration. You must publish the service definition to this root folder.
- Optionally, choose the **GIS server cluster** that will host the published service definition. Click **Next**.
- Optionally, choose to **enable** or **disable capabilities** for your service definition.

9 Publish Services (continued)

- Click **Publish** to publish the service definition as a service. The new map service appears in the list of available services.



The publish process uses the first directory in the server's list of cache directories. You need to change it to the data appliance cache directory created previously.

- Click the **Stop** button to the right of the service name to stop the service.
- Click the **Edit** button to edit the service properties.
- Click **Caching** and change the **cache directory** setting to reference the data appliance collection.



- Click **Save** to save your changes and click the **Restart** button to restart the service.
- Repeat this process for any other map services you want to publish.

10 Use Services

For specific instructions on how to connect to and use the services, see the appropriate user guide for the ArcGIS application you are using.

Additional information can be found in the help file on the *Data Appliance 5.1 for ArcGIS Help Documentation DVD* by opening `arcgis_data_appliance.pdf`.

Services Reference Guide for 5.1

Map Services	Globe Services	Geocode Services
DeLorme_World_Base_Map	EESRI_Elevation_World	ESRI_Places_World ¹
NatGeo_World_Map ¹	USGS_Elevation_US	
Ocean_Basemap		
USA_Topo_Maps		
World_Boundaries_and_Places		
World_Boundaries_and_Places_Alternate		
World_Imagery		
World_Light_Gray_Base ¹		
World_Light_Gray_Reference ¹		
World_Physical_Map		
World_Shaded_Relief		
World_Street_Map		
World_Topo_Map		
World_Transportation		

¹ New Services—Refer to the *Data Appliance 5.0 for ArcGIS Help Documentation DVD* for more information.

² Now available on a separate DVD included with Data Appliance 5.1 for ArcGIS.

Resources

Cutting Edge Networked Storage provides several reference documents. These are available at cuttedge.com/contact/DAWindows.html.

The *Data Appliance 5.1 for ArcGIS Help Documentation DVD* is included in the box with your data collection drives. Refer to the help for additional details.

For an up-to-date online help system, system requirements, information on licensing, and more, visit links.esri.com/data-appliance/5.1/tech-docs.

Support

Esri Support

For information regarding the configuration and setup of ArcGIS services and usage, visit support.esri.com/en/phoneSupport.

For the most current information for all ArcGIS products, visit the ArcGIS Resources website at resources.arcgis.com.

Cutting Edge Networked Storage Support

For information and support regarding the Data Appliance for ArcGIS hardware, contact Cutting Edge Networked Storage using the following contact options:

Phone: 800-257-1666
E-mail: support@cuttedge.com
Website: cuttedge.com/contact/technical_support.html
Hours: Monday–Friday, 8:00 a.m.–5:00 p.m. (Pacific time)

