

ArcGIS® 9

ArcGIS Publisher Tutorial



Copyright © 2003–2006 ESRI

All Rights Reserved.

Printed in the United States of America.

The information contained in this document is the exclusive property of ESRI. This work is protected under United States copyright law and the copyright laws of the given countries of origin and applicable international laws, treaties, and/or conventions. No part of this work may be reproduced or transmitted in any form or by any means, electronic or mechanical, including photocopying or recording, or by any information storage or retrieval system, except as expressly permitted in writing by ESRI. All requests should be sent to Attention: Contracts Manager, ESRI, 380 New York Street, Redlands, CA 92373-8100, USA.

The information contained in this document is subject to change without notice.

CONTRIBUTING WRITERS

Katherine Dalton, Mark Bockenbauer

U.S. GOVERNMENT RESTRICTED/LIMITED RIGHTS

Any software, documentation, and/or data delivered hereunder is subject to the terms of the License Agreement. In no event shall the U.S. Government acquire greater than RESTRICTED/LIMITED RIGHTS. At a minimum, use, duplication, or disclosure by the U.S. Government is subject to restrictions as set forth in FAR §52.227-14 Alternates I, II, and III (JUN 1987); FAR §52.227-19 (JUN 1987) and/or FAR §12.211/12.212 (Commercial Technical Data/Computer Software); and DFARS §252.227-7015 (NOV 1995) (Technical Data) and/or DFARS §227.7202 (Computer Software), as applicable. Contractor/Manufacturer is ESRI, 380 New York Street, Redlands, CA 92373-8100, USA.

ESRI, the ESRI globe logo, ArcReader, ArcGIS, the ArcGIS logo, GIS by ESRI, ArcMap, Geography Network, ArcCatalog, ArcSDE, ArcIMS, Spatial Database Engine, SDE, www.geographynetwork.com, and www.esri.com are trademarks, registered trademarks, or service marks of ESRI in the United States, the European Community, or certain other jurisdictions.

Other companies and products mentioned herein are trademarks or registered trademarks of their respective trademark owners.

ArcGIS Publisher Tutorial

IN THIS TUTORIAL

- **Exercise 1: Publishing a map**
- **Exercise 2: Customizing ArcGIS Publisher settings**
- **Exercise 3: Using ArcGIS Publisher security settings**
- **Exercise 4: Creating a data package**

The best way to learn ArcGIS® Publisher is to try it yourself. This tutorial guides you through the process of converting your ArcMap map document into a published map.

Exercise 1 shows you how to publish a map as well as how to get help with Publisher.

Exercise 2 walks you through different ways that you can publish a map. For example, you can decide what functionality is included with your map or specify whether the published map can be viewed in Data view, Layout view, or both.

Exercise 3 shows you how to publish a map that's password protected.

Exercise 4 demonstrates how to create a data package for a published map.

Each exercise in this tutorial takes about 10–15 minutes to complete. You have the option of working through the entire tutorial at once or completing each exercise one at a time.

Before you begin, install Publisher and the ArcReader tutorial data. To install the data, run the Tutorial setup during the ArcGIS Desktop installation or independently. For more information on how to install tutorial data, look at the ArcGIS Desktop installation guide for your platform.

Exercise 1: Publishing a map

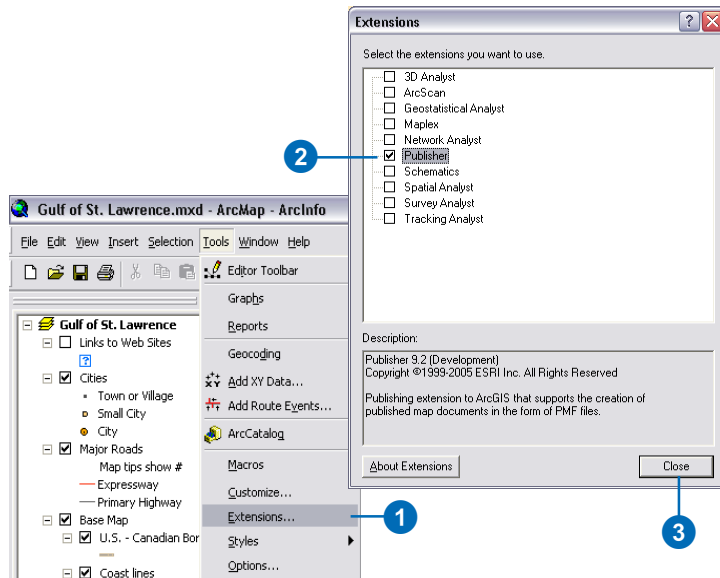
Choosing a map to publish

This exercise uses the Gulf of St. Lawrence.mxd file located in the ArcReader tutorial data. However, it is possible to do this exercise with any map document.

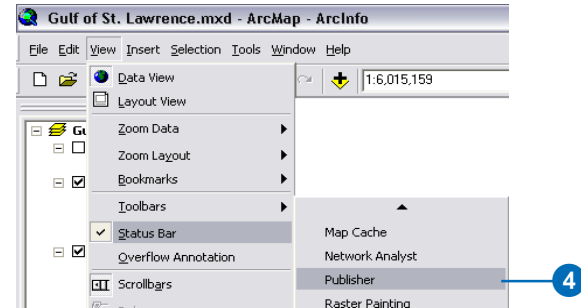
1. Click Start, point to Programs, point to ArcGIS, then click ArcMap.
2. Open the Gulf of St. Lawrence.mxd file (located in the \ArcTutor\ArcReader and Publisher folders).

Enabling and loading the Publisher toolbar

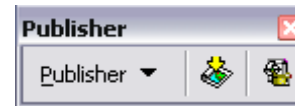
1. Click the Tools menu and click Extensions.
2. Check Publisher in the Extensions dialog box.



3. Click Close.
4. Click View, point to Toolbars, and click Publisher.



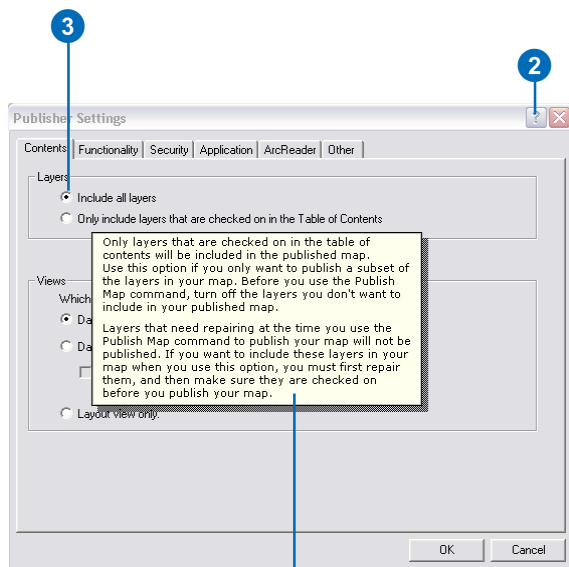
The Publisher toolbar appears.



Using context-sensitive help to get more information about Publisher

Context-sensitive help provides information about parts of the application interface. Click the Help button or press Shift+F1 while pointing to the command you would like more information about.

1. Click the Publisher menu and click Settings.
2. Click the Help button (the small question mark next to the Close button).
3. Click the option, button, or command you want more information about.

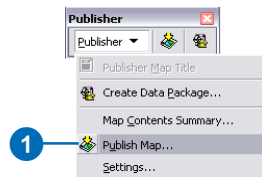


Context-sensitive help

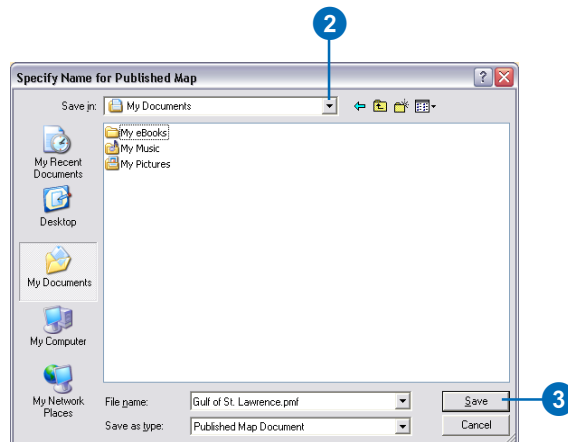
4. Click Cancel to exit.

Publishing a map using the default settings

1. Click Publisher and click Publish Map.



2. Use the file browser to name and select the output location for the published map.



3. Click Save.

You have just published a map.

Viewing the map in ArcReader

Please note that ArcReader is installed with a complete installation of ArcGIS Desktop. If you did not choose to add ArcReader during the initial installation, it can be added later. Please refer to the ArcGIS Desktop installation guide located in the Documentation folder on the CD.

After you have published a map, it's a good idea to open it in ArcReader to ensure that the map is published as expected.

1. Click Start, point to Programs, point to ArcGIS, then click ArcReader.
2. Click File and click Open.
The Select Published Map Document dialog box appears.
3. Navigate to the directory where the map was saved.
4. Double-click to open your published map.

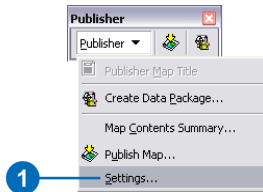
In this exercise, you learned how to set up a map to publish using ArcGIS Publisher. In the next exercise, you will learn how you can customize ArcGIS Publisher settings in order to publish your map exactly the way you want it.

Exercise 2: Customizing ArcGIS Publisher settings

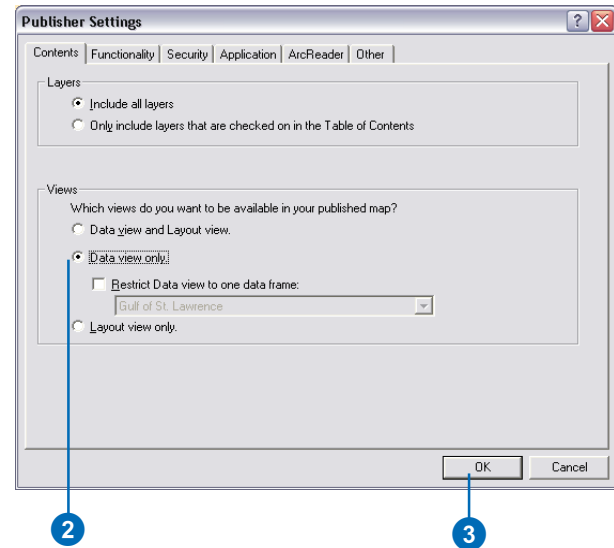
Publisher lets you adjust the settings of your map when you publish it. Having control over the way your map is published serves a variety of purposes from making it easier for ArcReader users to interact with a complex map to protecting sensitive data. Selecting the proper settings can help make the map more useful for its intended audience.

Publishing a map in Data view only

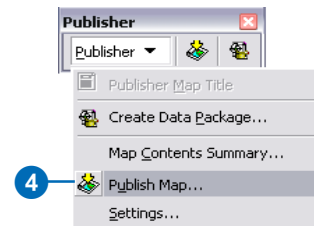
1. Click the Publisher menu and click Settings.



2. Click the Contents tab and click the Data view only button.
3. Click OK.



4. Click the Publisher menu and click Publish Map.



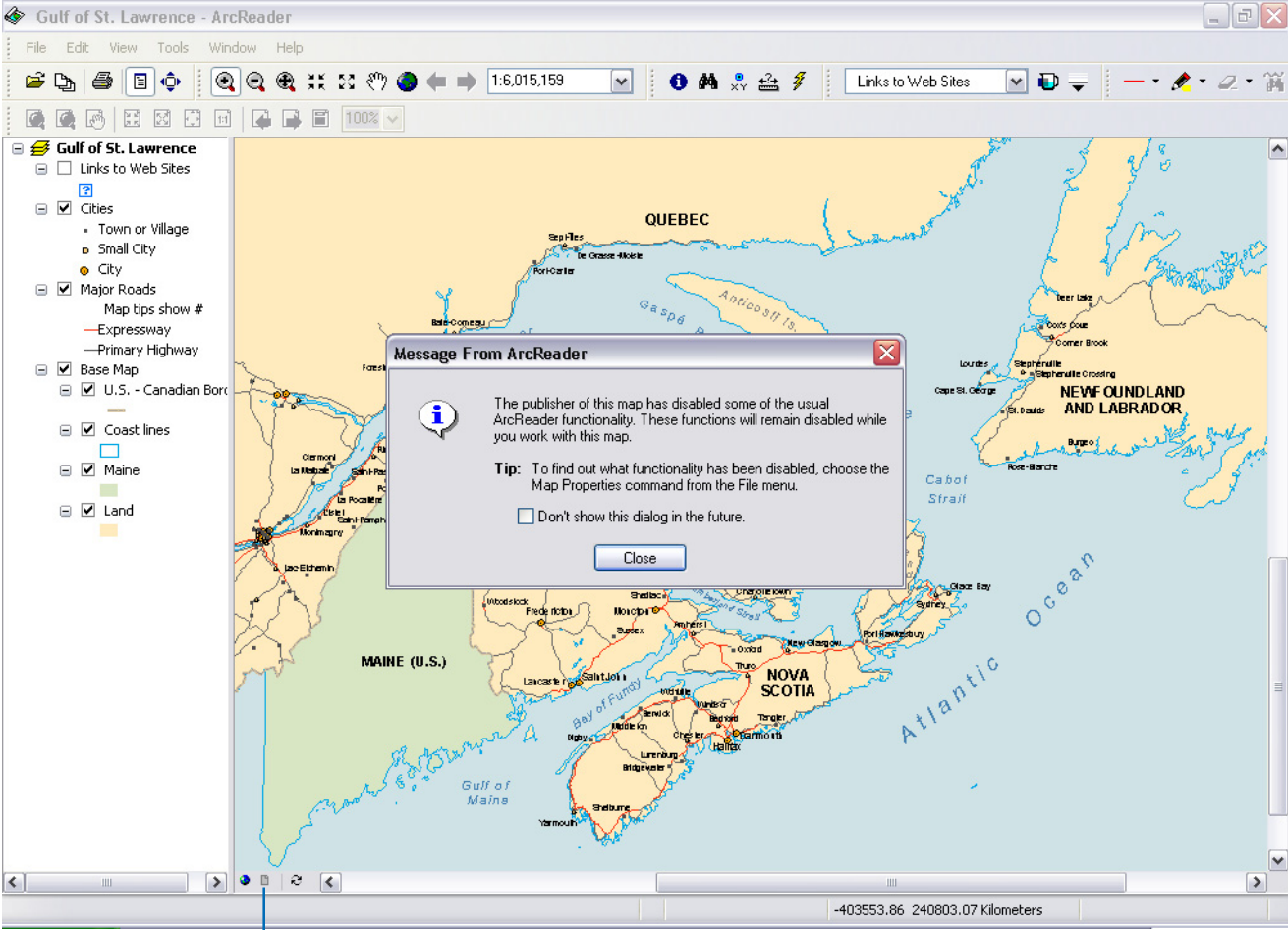
5. Choose an output location for the map and click Save.

If you try to save the map with the same name as a map that you have previously published, you will be asked if you want to overwrite the map. Click No and give the map a new name.

After you have saved the map, open it in ArcReader to ensure that it was published with only Data view enabled.

The graphic on the following page illustrates what your map should look like in ArcReader once you have published it with only Data view enabled.

When the map is opened in ArcReader, a message displays that alerts the map user to disabled functionality.



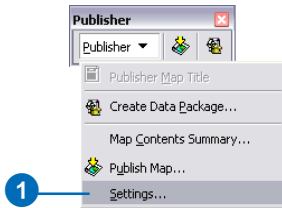
The Layout view button is disabled.

This is an example of a map published with only Data view enabled.

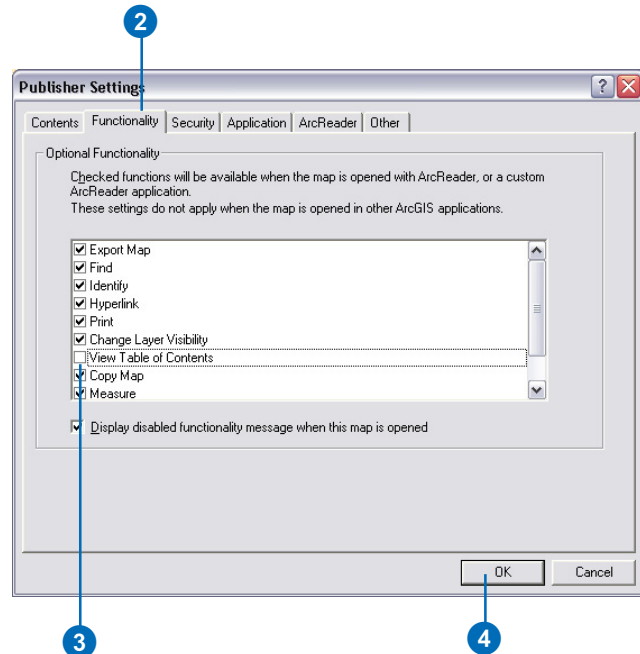
Publishing a map without a table of contents

Sometimes you may need to publish maps with reduced functionality to protect data or to meet special needs of your audience. Publisher lets you publish maps with reduced functionality, allowing you to tailor the ArcReader experience for a particular purpose. The following steps demonstrate how to turn the table of contents off. You can follow the same steps to reduce other functionality in your map, depending on your needs.

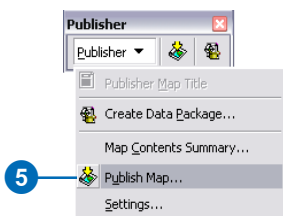
1. Click the Publisher menu and click Settings.



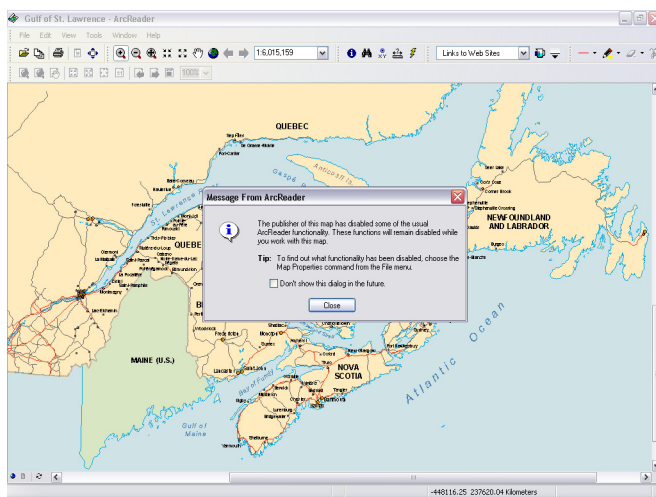
2. Click the Functionality tab.
3. Uncheck View Table of Contents.
4. Click OK.



5. Click Publisher, click Publish Map, and save the map to an output location.
6. Open ArcReader and navigate to the directory where you saved your map.



The table of contents does not appear.



The message notifies the user that some commands or tools have been disabled.

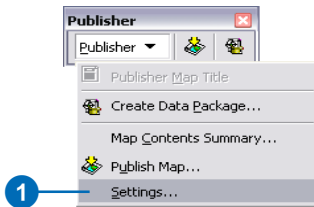
In this exercise, you saw how to publish a map without a table of contents. In the following exercise, you will learn how to use the security settings in Publisher to control who can access the data in your published map.

Exercise 3: Using ArcGIS Publisher security settings

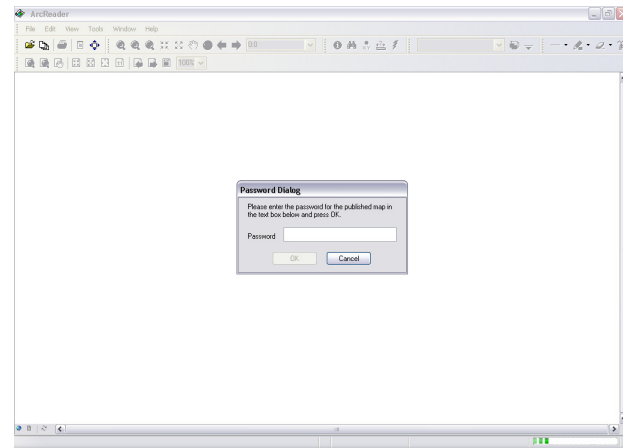
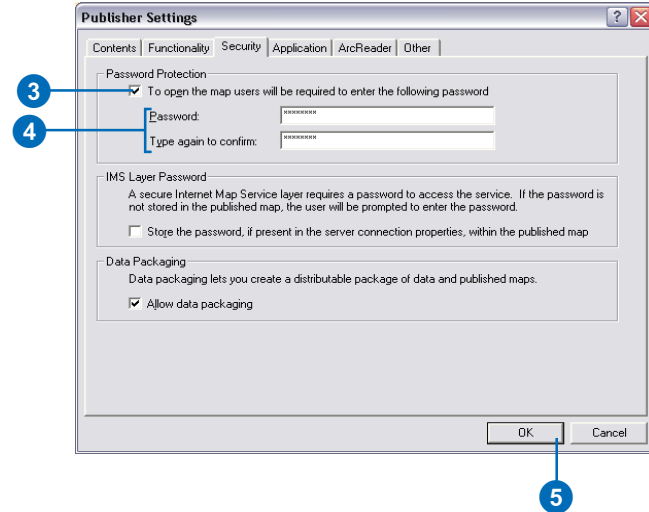
There may be times when you want to control who can access your published map or the data in the map. In cases like this, you can publish your map so a password is required to open it in ArcReader. Publisher honors data source passwords and allows you to add another layer of security by password-protecting a published map.

Publishing a map that is password protected

1. Click the Publisher menu and click Settings.



2. Click the Security tab.
3. Check the Password protect the published map check box.
4. Enter a password and confirm the password.
5. Click OK.
6. Click Publish Map and save the map to an output location.
7. Reopen ArcReader. You are now prompted to enter a password before the map displays.



ArcReader prompts for a password when the map is opened.

Exercise 4: Creating a data package

You may want to share your published map with someone who does not have access to your data. Creating a data package for your published map allows you to easily distribute the map and data. This exercise shows you how to create a published map and data package for a specific bookmark in a map document. Only the data necessary to view the bookmark will be placed in the data package.

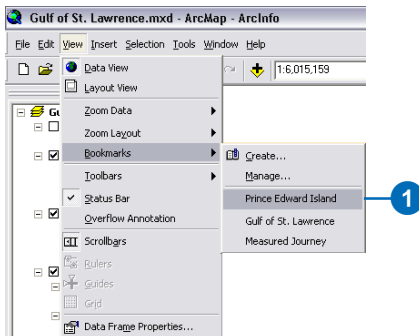
Choosing a map to publish and package

This exercise uses the Gulf of St. Lawrence.mxd file located in the ArcReader tutorial data. However, it is possible to do this exercise with any map document.

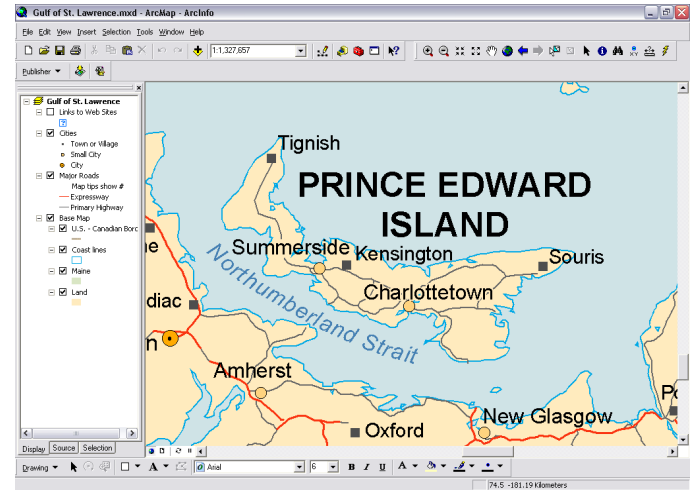
1. Click Start, point to Programs, point to ArcGIS, then click ArcMap.
2. Open the Gulf of St. Lawrence.mxd file (located in the \ArcTutor\ArcReader and Publisher folder).

Publishing a specific bookmark

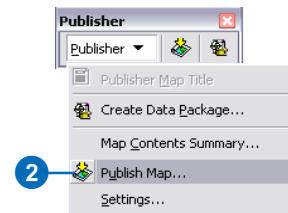
1. Click View, point to Bookmarks, then click Prince Edward Island.



The Prince Edward Island bookmark is displayed.




2. Click Publisher and click Publish Map.



3. Choose an output location for the map, enter Prince Edward Island for the filename, and click Save.

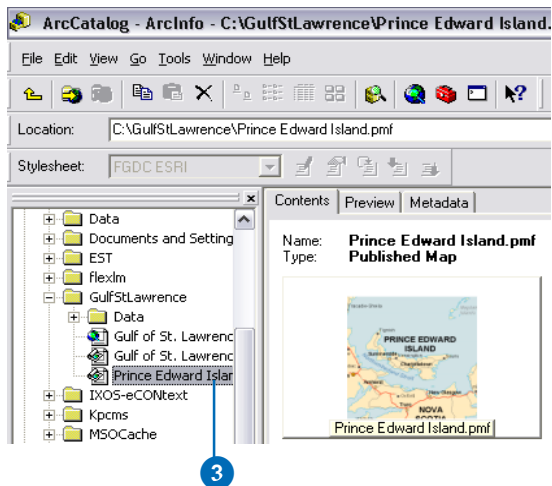
When the Prince Edwarded Island.pmf is opened in ArcReader the Prince Edward Island extent will draw as it did in ArcMap.

Creating a data package for a published map

Data packages can be created in ArcCatalog or ArcMap. In ArcCatalog, right-click on a published map and click Create Data Package. In ArcMap, click the Create Data Package button  on the Publisher toolbar. This exercise will use ArcCatalog to create the data package.

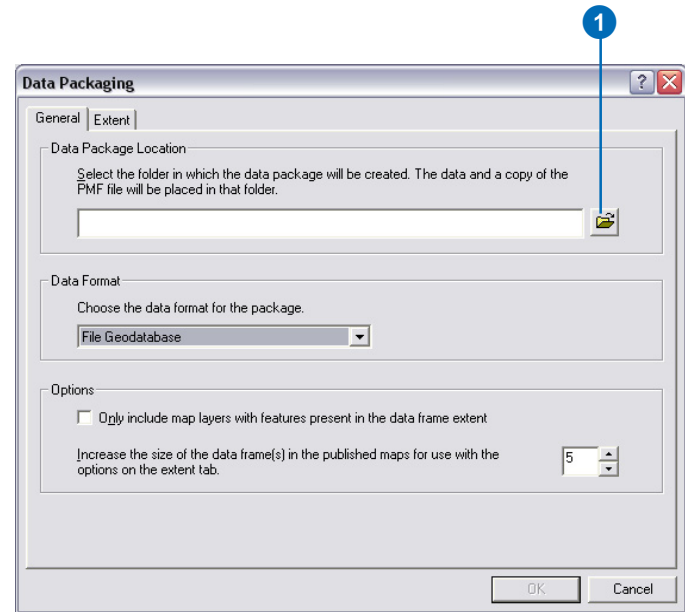
1. Click Start, point to Programs, point to ArcGIS, then click ArcCatalog.
2. On your computer, create a new folder named “PEI Package.” The data package will be placed in this folder.
3. Navigate to the output location for Prince Edward Island.pmf, right-click the published map, and click Create Data Package.

Note: If the Create Data Package command is disabled, check to see that the Publisher extension has been enabled.

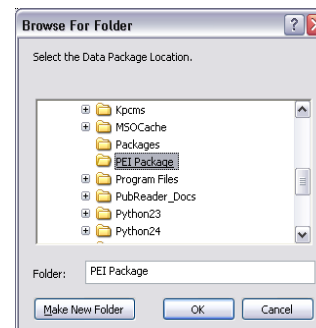


Choose the package location

1. Click the General tab, then click the Browse button.



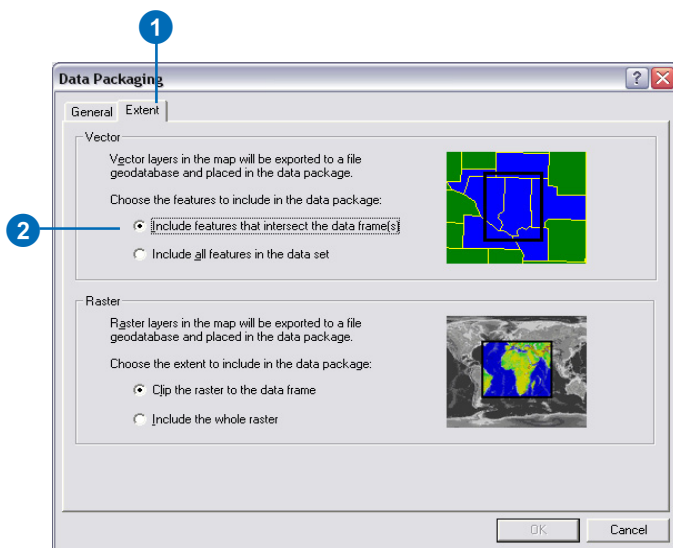
2. Browse to the PEI Package folder you created in step 2 of the previous task, and click OK.



Setting up packaging options for vector data in the map

When creating a data package, you can choose the output data format as well as whether to include all or a portion of the data used in the map. For this data package you will package shapefile data that intersects the extent of the data frame.

1. Click the Extent tab.
2. In the Vector options, click Include features that intersect the data frame(s).



3. Click OK to create the data package.

If you navigate to the PEI Package folder in ArcCatalog you will see the data and published map. You can now distribute the PEI Package folder to any ArcReader user who wants to view your map.

In this tutorial, you have been introduced to some functions of ArcGIS Publisher. You learned how to change the Publisher settings to publish a map that effectively conveys the information that you want. You also saw how to view your published map in ArcReader and how to package your published map. For more information on Publisher, refer to the ArcGIS Desktop Help system. To get information about specific dialog boxes, options, or commands, use the context-sensitive help.

