

Using ESRI® MapData™

*GIS by ESRI™*

Copyright © 1998–2002 ESRI.  
All rights reserved.  
Printed in the United States of America.

The information contained in this document is the exclusive property of ESRI. This work is protected under United States copyright law and other international copyright treaties and conventions. No part of this work may be reproduced or transmitted in any form or by any means, electronic or mechanical, including photocopying and recording, or by any information storage or retrieval system, except as expressly permitted in writing by ESRI. All requests should be sent to Attention: Contracts Manager, ESRI, 380 New York Street, Redlands, CA 92373-8100, USA.

The information contained in this document is subject to change without notice.

### **CONTRIBUTING WRITERS**

Jeff Rogers

### **U.S. GOVERNMENT RESTRICTED/LIMITED RIGHTS**

Any software, documentation, and/or data delivered hereunder is subject to the terms of the License Agreement. In no event shall the U.S. Government acquire greater than RESTRICTED/LIMITED RIGHTS. At a minimum, use, duplication, or disclosure by the U.S. Government is subject to restrictions as set forth in FAR §52.227-14 Alternates I, II, and III (JUN 1987); FAR §52.227-19 (JUN 1987) and/or FAR §12.211/12.212 (Commercial Technical Data/Computer Software); and DFARS §252.227-7015 (NOV 1995) (Technical Data) and/or DFARS §227.7202 (Computer Software), as applicable. Contractor/Manufacturer is ESRI, 380 New York Street, Redlands, CA 92373-8100, USA.

ESRI, ArcGIS, ArcMap, ArcInfo, MapData, GIS by ESRI, the ArcGIS logo, and [www.esri.com](http://www.esri.com) are trademarks, registered trademarks, or service marks of ESRI in the United States, the European Community, or certain other jurisdictions.

Other companies and products mentioned herein are trademarks or registered trademarks of their respective trademark owners.

# Quick-start tutorial

# 2

## IN THIS CHAPTER

- **Installing the MapLoader**
- **Starting the MapLoader**
- **Selecting the input drive**
- **Selecting geographic regions**
- **Selecting map layers**
- **Extracting maps**
- **Appending maps**
- **Using MSA selection**

The first step in creating a map is to locate the data you want to put on it. Finding, organizing, and formatting this data is often a time-consuming task. The ESRI MapLoader was created with the goal of making map selection and preparation as simple as possible, allowing time for the more important aspects of cartography, such as analysis and presentation.

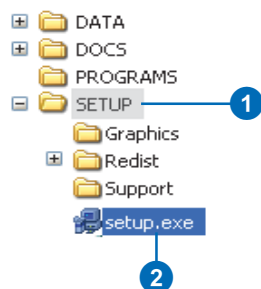
MapData includes more than 55 thematic layers for 3,233 U.S. counties and regions. This substantial database represents more than 150,000 individual maps. Creating a custom project from this database can be completed in a few basic steps. The MapLoader provides a simple interface for selecting a set of thematic layers and choosing a geographic region. Once this information is selected the MapLoader compiles the entire map set into a single output folder.

The best way to learn about building a mapping project with MapData is to try it yourself. This tutorial guides you through some basic MapLoader processes as you create a mapping project for San Diego County, California.

## Installing the MapLoader

ESRI MapLoader can be installed on Windows® 95/98, Windows NT® 4.0, and Windows 2000/XP using the Setup file (Setup.exe) provided in the setup directory of any MapData CD-ROM. Follow the onscreen instructions to complete the MapLoader installation. Detailed installation instructions are available in the docs folder on each MapData CD-ROM. After the MapLoader has been installed, it can be accessed from the Windows Start menu.

1. Browse to the Setup folder in the root directory of the MapData CD/DVD.
2. Run the Setup.exe file and follow the onscreen instructions.

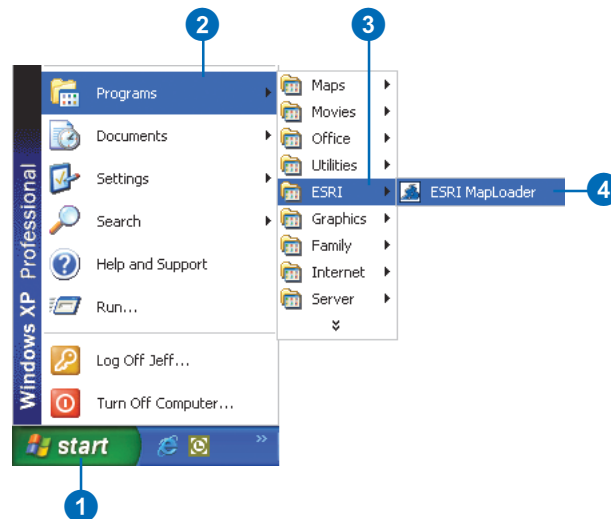


The MapLoader cannot be installed on top of a previous installation. If you are prompted to remove the MapLoader, you must do so before reinstallation.

## Starting the MapLoader

ESRI MapLoader is designed so you can easily extract geographic and thematic components for your mapping project. To illustrate this process, try the simple tutorial below, which guides you through the basic steps of building an overview map for San Diego, California.

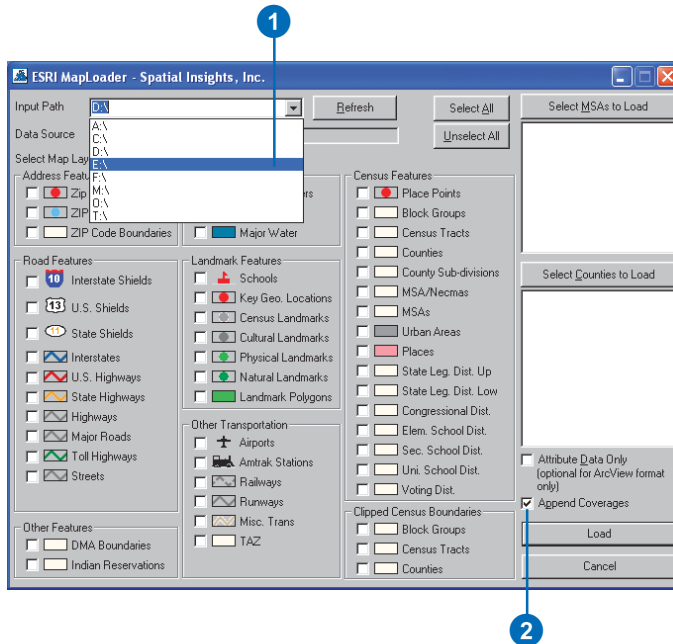
1. Click the Start button on the Windows taskbar.
2. Point to Programs.
3. Point to ESRI.
4. Click ESRI MapLoader.



## Selecting the input drive

Because many users have two or more CD-ROM drives in their computers, the MapLoader provides an option to select an input drive. The input drive holds the MapData CD-ROM or DVD-ROM where you will load maps.

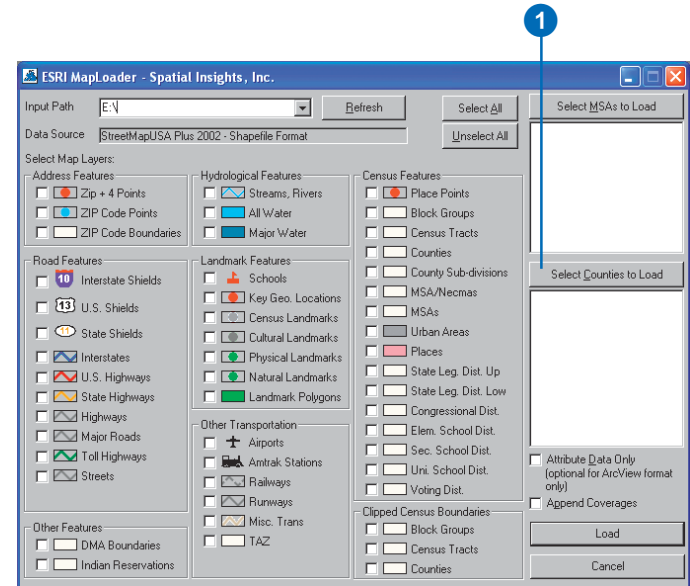
1. Click the Drive icon and scroll to the appropriate drive. Select drive E:\ as your input drive.
2. Uncheck Append Coverages. The Append functionality will not be used in this example.



## Selecting geographic regions

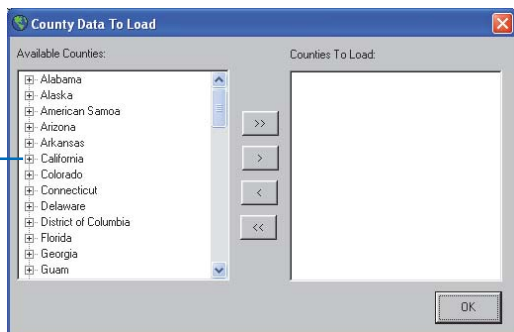
In this exercise you will learn how to define a study area. To load a specific geographic region, choose a collection of states and/or counties.

1. Click Select Counties to Load.



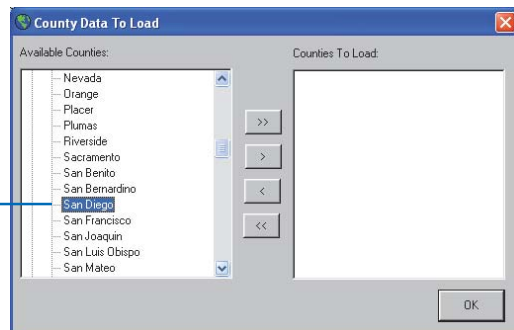
The County Data To Load dialog box displays a list of U.S. states; each state can be expanded to display its component counties.

2. Select and expand California from the Available Counties menu.



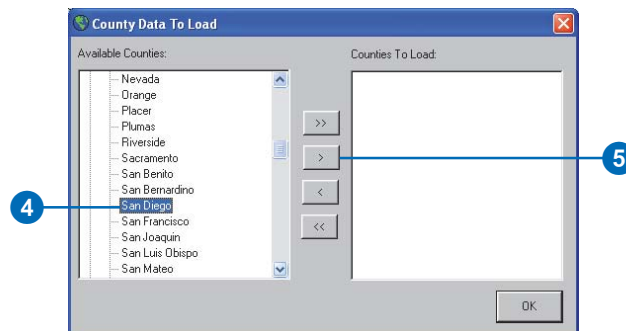
*More than one state can be selected at once by holding down the Shift key while selecting.*

3. Scroll down the Available Counties dropdown list until you reach San Diego.



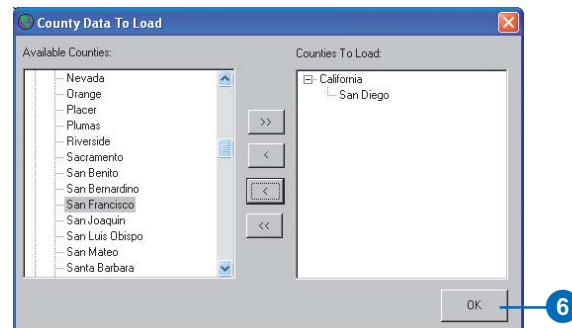
*More than one county can be selected at once by holding down the Shift key while selecting.*

4. Select San Diego County.
5. Click the > button to move San Diego County to the Counties To Load list.



San Diego County is now selected to load. It appears in the Counties To Load list.

6. Click OK.

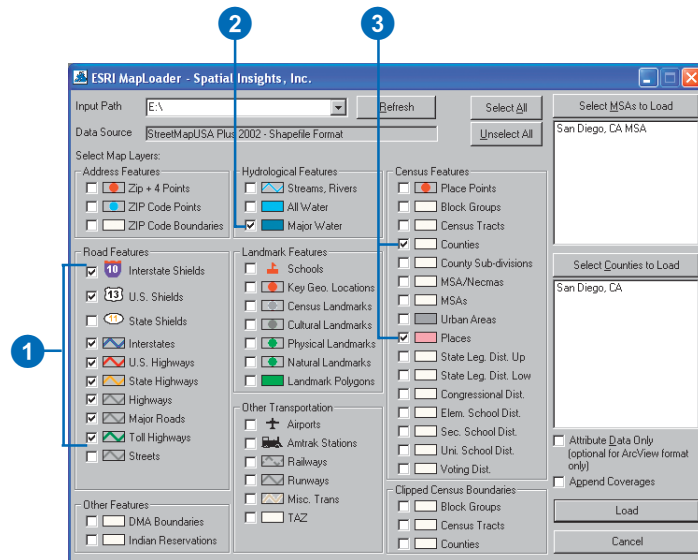


*A county can be removed from the Counties To Load list by selecting the county and clicking the < button.*

## Selecting map layers

MapData has more than 50 thematic layers that can be utilized for a project. In this exercise you will select layers suited for a general overview map of San Diego County. To select any layer, check the check box beside the appropriate layer. Select layers appropriate for an overview map of San Diego.

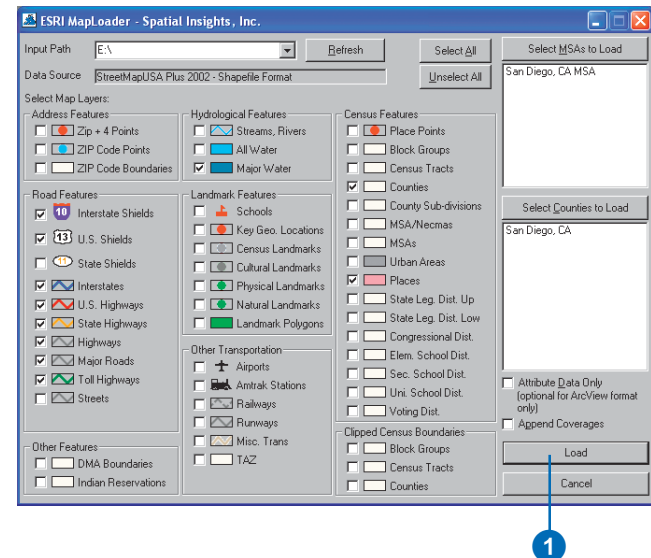
1. Check Interstate Shields, U.S. Shields, Interstates, U.S. Highways, State Highways, Highways, Major Roads, and Toll Highways in the Road Features box.
2. Check Major Water in the Hydrological Features box.
3. Check Counties and Places in the Census Features box.



## Extracting maps

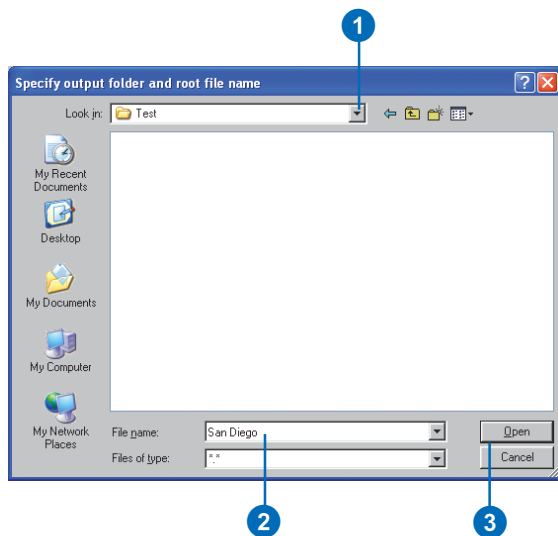
After selecting your geography and map layers, you can extract the custom project to disk.

1. Click Load.

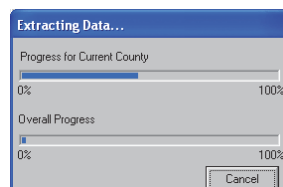


The MapLoader opens a new dialog box from which you can select your destination folder.

1. Click the Look in dropdown arrow and navigate to a directory. This directory is the destination folder for your project and can be any folder that suits your requirements. For this example select the Test folder.
2. In the File name box, type a name for your project. This name is the file suffix that will be appended to each of the layers in your project. For this example select San Diego.
3. Click Open.

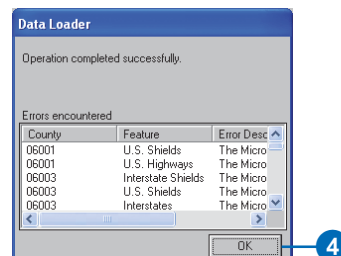


The project should now be extracting to disk. The current progress is illustrated in the Extracting Data dialog box.



When extraction is finished, a report is displayed in the Data Loader dialog box. It is common for errors to be reported in the Errors encountered list box. In most cases these errors represent situations in which a map layer was not available for a selected geography. There are several valid instances in which this would be true. For example, Interstate highway segments do not pass through all counties.

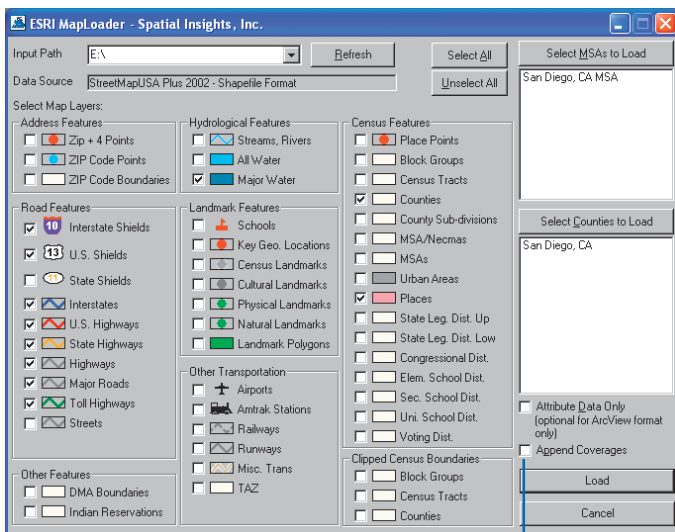
4. Click OK.



Your mapping project can now be accessed from your mapping application. For this example open your San Diego maps from the test folder. Consult your mapping application for more information about opening map files. *Using ArcMap* is an excellent resource for ArcGIS™ and ArcMap™ users.

## Appending maps

The MapLoader includes the capability for appending geographic regions as a single file. This utility is useful for building projects that cover more than one county. To utilize the append function, the Append Coverages check box on the MapLoader window must be checked.



*Append Coverages check box*

## Using MSA selection

A common unit of geography used in many mapping projects is a Metropolitan Statistical Area (MSA). MSAs are composed of groups of counties usually defining a larger metropolitan area. The MapLoader has a Select MSAs to Load function that allows users to define their projects by MSA. By selecting an MSA the group of counties composing that MSA is loaded to the Counties To Load list box. These counties could now be loaded to a unique project.

