

# Updating 9.3.1 MXDs to 10 with the UpdateMXDs Tool

---

August 2010

David Palomino, Product Engineer, Esri

Copyright © 2010 Esri  
All rights reserved.  
Printed in the United States of America.

The information contained in this document is the exclusive property of Esri. This work is protected under United States copyright law and other international copyright treaties and conventions. No part of this work may be reproduced or transmitted in any form or by any means, electronic or mechanical, including photocopying and recording, or by any information storage or retrieval system, except as expressly permitted in writing by Esri. All requests should be sent to Attention: Contracts and Legal Services Manager, Esri, 380 New York Street, Redlands, CA 92373-8100 USA.

The information contained in this document is subject to change without notice.

#### **U.S. GOVERNMENT RESTRICTED/LIMITED RIGHTS**

Any software, documentation, and/or data delivered hereunder is subject to the terms of the License Agreement. In no event shall the U.S. Government acquire greater than RESTRICTED/LIMITED RIGHTS. At a minimum, use, duplication, or disclosure by the U.S. Government is subject to restrictions as set forth in FAR §52.227-14 Alternates I, II, and III (JUN 1987); FAR §52.227-19 (JUN 1987) and/or FAR §12.211/12.212 (Commercial Technical Data/Computer Software); and DFARS §252.227-7015 (NOV 1995) (Technical Data) and/or DFARS §227.7202 (Computer Software), as applicable. Contractor/Manufacturer is Esri, 380 New York Street, Redlands, CA 92373-8100 USA.

@esri.com, 3D Analyst, ACORN, Address Coder, ADF, AML, ArcAtlas, ArcCAD, ArcCatalog, ArcCOGO, ArcData, ArcDoc, ArcEdit, ArcEditor, ArcEurope, ArcExplorer, ArcExpress, ArcGIS, ArcGlobe, ArcGrid, ArcIMS, ARC/INFO, ArcInfo, ArcInfo Librarian, ArcInfo—Professional GIS, ArcInfo—The World's GIS, ArcLessons, ArcLocation, ArcLogistics, ArcMap, ArcNetwork, *ArcNews*, ArcObjects, ArcOpen, ArcPad, ArcPlot, ArcPress, ArcPy, ArcQuest, ArcReader, ArcScan, ArcScene, ArcSchool, ArcScripts, ArcSDE, ArcSdl, ArcSketch, ArcStorm, ArcSurvey, ArcTIN, ArcToolbox, ArcTools, ArcUSA, *ArcUser*, ArcView, ArcVoyager, *ArcWatch*, ArcWeb, ArcWorld, ArcXML, Atlas GIS, AtlasWare, Avenue, BAO, Business Analyst, Business Analyst Online, BusinessMAP, CommunityInfo, Data Automation Kit, Database Integrator, DBI Kit, EDN, Esri, Esri—Team GIS, Esri—*The GIS Company*, Esri—The GIS People, Esri—The GIS Software Leader, FormEdit, GeoCollector, Geographic Design System, Geography Matters, Geography Network, GIS by Esri, GIS Day, GIS for Everyone, GISData Server, JTX, MapBeans, MapCafé, MapData, MapIt, Maplex, MapObjects, MapStudio, ModelBuilder, MOLE, MPS-Atlas, NetEngine, PC ARC/INFO, PC ARCPLOT, PC ARCSHELL, PC DATA CONVERSION, PC STARTER KIT, PC TABLES, PC ARCEDIT, PC NETWORK, PC OVERLAY, PLTS, Rent-a-Tech, RouteMAP, SDE, Site•Reporter, SML, Sourcebook•America, Spatial Database Engine, StreetEditor, StreetMap, Tapestry, the ARC/INFO logo, the ArcAtlas logo, the ArcCAD logo, the ArcCAD WorkBench logo, the ArcCOGO logo, the ArcData logo, the ArcData Online logo, the ArcEdit logo, the ArcEurope logo, the ArcExplorer logo, the ArcExpress logo, the ArcGIS logo, the ArcGIS Explorer logo, the ArcGrid logo, the ArcIMS logo, the ArcInfo logo, the ArcLogistics Route logo, the ArcNetwork logo, the ArcPad logo, the ArcPlot logo, the ArcPress for ArcView logo, the ArcPress logo, the ArcScan logo, the ArcScene logo, the ArcSDE CAD Client logo, the ArcSDE logo, the ArcStorm logo, the ArcTIN logo, the ArcTools logo, the ArcUSA logo, the ArcView 3D Analyst logo, the ArcView Data Publisher logo, the ArcView GIS logo, the ArcView Image Analysis logo, the ArcView Internet Map Server logo, the ArcView logo, the ArcView Network Analyst logo, the ArcView Spatial Analyst logo, the ArcView StreetMap 2000 logo, the ArcView StreetMap logo, the ArcView Tracking Analyst logo, the ArcWorld logo, the Atlas GIS logo, the Avenue logo, the BusinessMAP logo, the Data Automation Kit logo, the Digital Chart of the World logo, the Esri Data logo, the Esri globe logo, the Esri Press logo, the Geography Network logo, the GIS Day logo, the MapCafé logo, the MapObjects Internet Map Server logo, the MapObjects logo, the MOLE logo, the NetEngine logo, the PC ARC/INFO logo, the Production Line Tool Set logo, the RouteMAP IMS logo, the RouteMAP logo, the SDE logo, The Geographic Advantage, The Geographic Approach, The World's Leading Desktop GIS, *Water Writes*, www.esri.com, www.geographynetwork.com, www.gis.com, www.gisday.com, and Your Personal Geographic Information System are trademarks, registered trademarks, or service marks of Esri in the United States, the European Community, or certain other jurisdictions.

Other companies and products mentioned herein may be trademarks or registered trademarks of their respective trademark owners.

## Updating 9.3.1 MXDs with the UpdateMXDs Tool

The UpdateMXDs tool updates Business Analyst 9.3 and 9.3.1 map documents (MXDs) to Business Analyst 10 by replacing the background layers. This is a very helpful tool, since some of the background layer details are not perfectly matched between Business Analyst 10 and earlier versions. When updating a Business Analyst 9.3 or 9.3.1 MXD, it is recommended that you enable Automatically update map projection on the Misc tab of the Business Analyst Preferences dialog box.

## The Annual Version and Data Update and Data Compilation Processes

Each year, the Business Analyst MXD is updated not only in look but also with updated datasets so that users have access to the most current information. Much of this data comes from vendors and partners. Unfortunately, certain changes happen to the data that is out of Esri's control. These changes include file types, field name changes, and detail level changes. Fortunately, there is a clean workaround for these changes.

## What Happens If an Earlier Version MXD Is Opened Directly in 10

If you try to open a previously saved 9.3.1 MXD directly in 10, the MXD will open with a lot of empty layers.

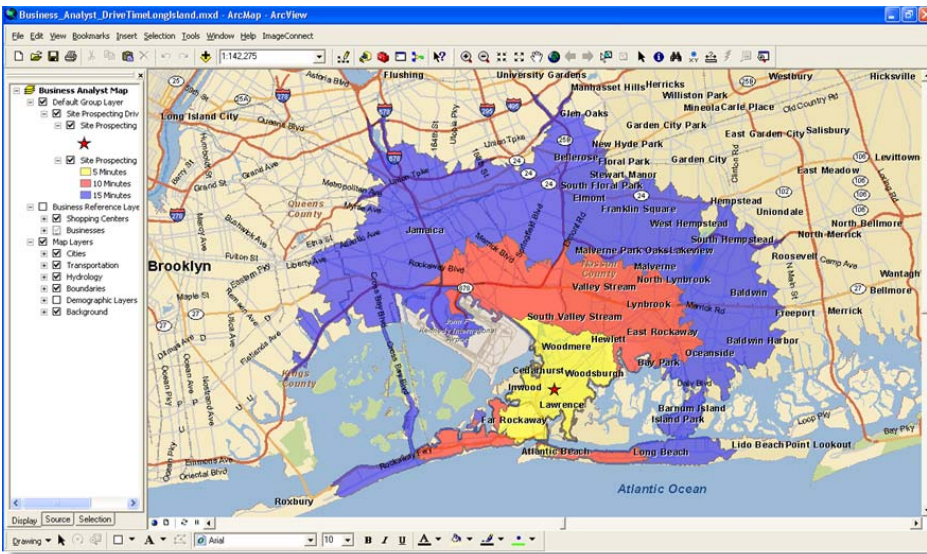


## Two MXDs in 10—Business Analyst.mxd and Business Analyst Web.mxd: Why and When to Use Them

There are two MXD options for Business Analyst 10: Business Analyst.mxd and Business Analyst Web.mxd. The more familiar, Business Analyst.mxd, is used for normal Business Analyst tasks, and layers can be modified. Business Analyst Web.mxd uses a background layer that is called up. It's light on the client side, and the layer symbology and scale-dependent resolution is fixed. The Web version is quick and easy, but all the Business Analyst tasks are available, as they are in the regular desktop version.

## Using the UpdateMXDs Tool

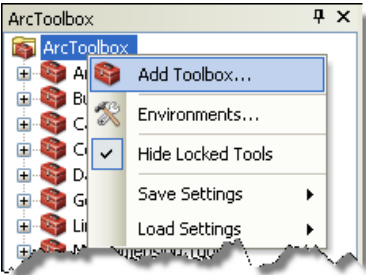
Below is a screen shot of an MXD as seen in 9.3.1:



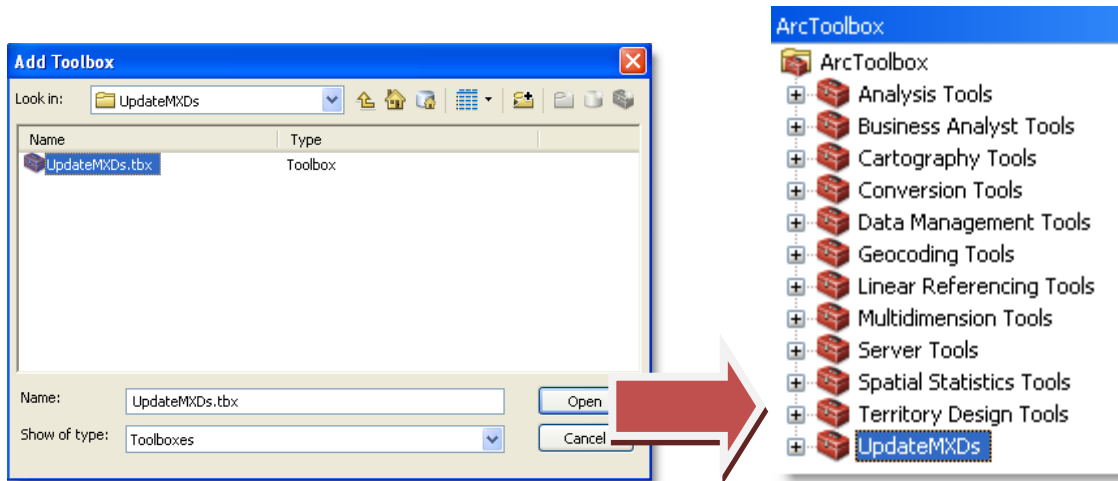
There are three ways to update your MXD from 9.3.1 to 10: from ArcCatalog, ArcMap, and ArcMap through the Catalog window.

### From ArcCatalog

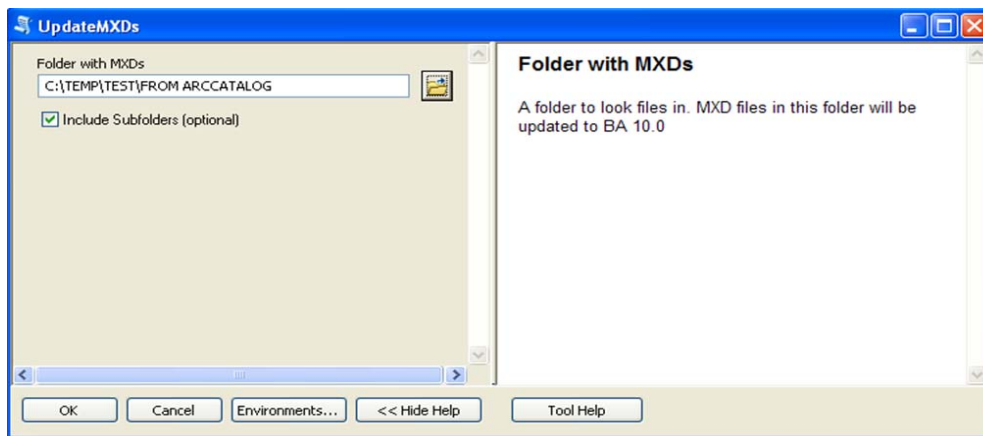
1. Start ArcCatalog.
2. Add the UpdateMXDs toolbox (UpdateMXDs.tbx).
  - a. Right-click ArcToolbox and choose Add Toolbox.



- b. Navigate to C:\Program Files\ArcGIS\Desktop10.0\Business Analyst\Datasets\UpdateMXDs\UpdateMXDs.tbx and add the toolbox.



3. Open the tool and navigate to the folder that contains your 9.3.1 saved MXD(s). Note: The tool will update all your MXDs in the folder. If there are other MXDs located in a subfolder, you have the option to update these or not by checking or unchecking the Include Subfolders (optional) check box.



4. Click OK.

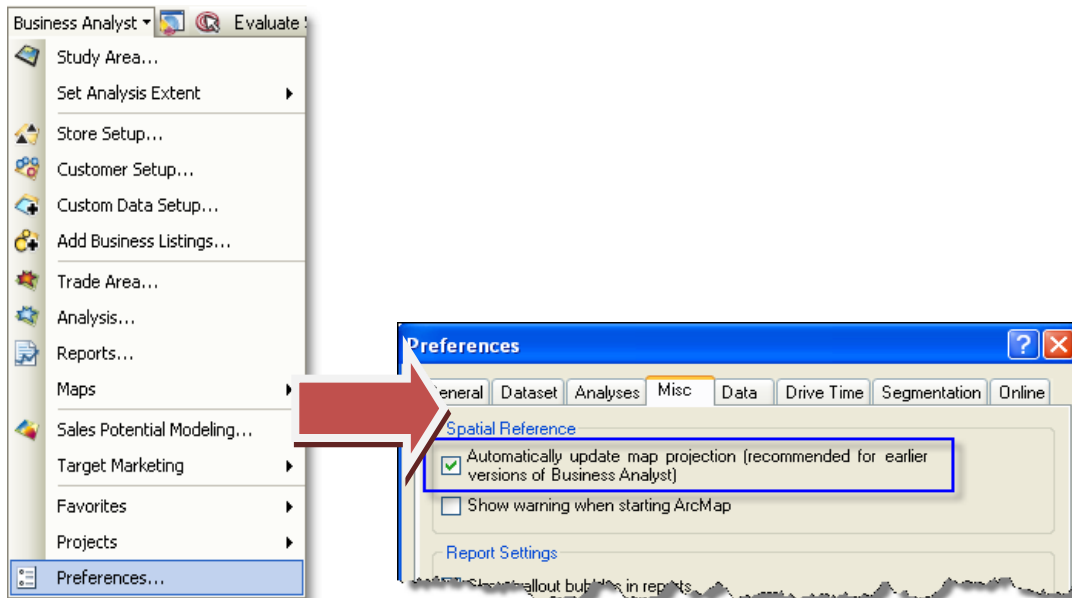
When you navigate to where your MXD(s) is located, you'll notice that there is a backup MXD for each. These backups are 9.3.1 versions, while the nonbackups are for version 10. You'll also notice that all your nonbackup MXDs are updated.

Name	Size	Type	Date Modified
Business_Analyst_DriveTimeLongIsland.mxd	8,587 KB	ESRI ArcMap Document	8/12/2010 2:18 PM
Business_Analyst_DriveTimeLongIsland_bak.mxd	4,955 KB	ESRI ArcMap Document	8/12/2010 1:45 PM

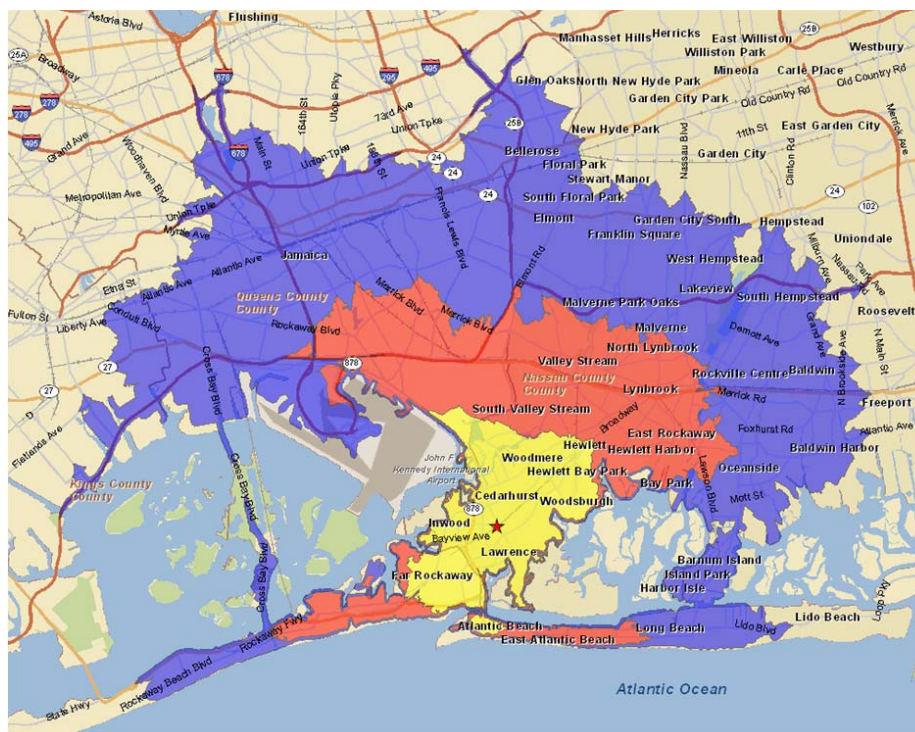
5. Open the nonbackup MXD.

Due to 9.3.1 being run on geographic projection (projection on the fly) and 10 being run on Web Mercator, your zoom level will look different. (Note: Business Analyst 10 is in Web Mercator and is thus in line with industry standards as well as being consistent with ArcGIS Online map services. You can now more easily load cached background map services and layers seamlessly.)

6. Start ArcMap and set the projection to Automatically update map projection.

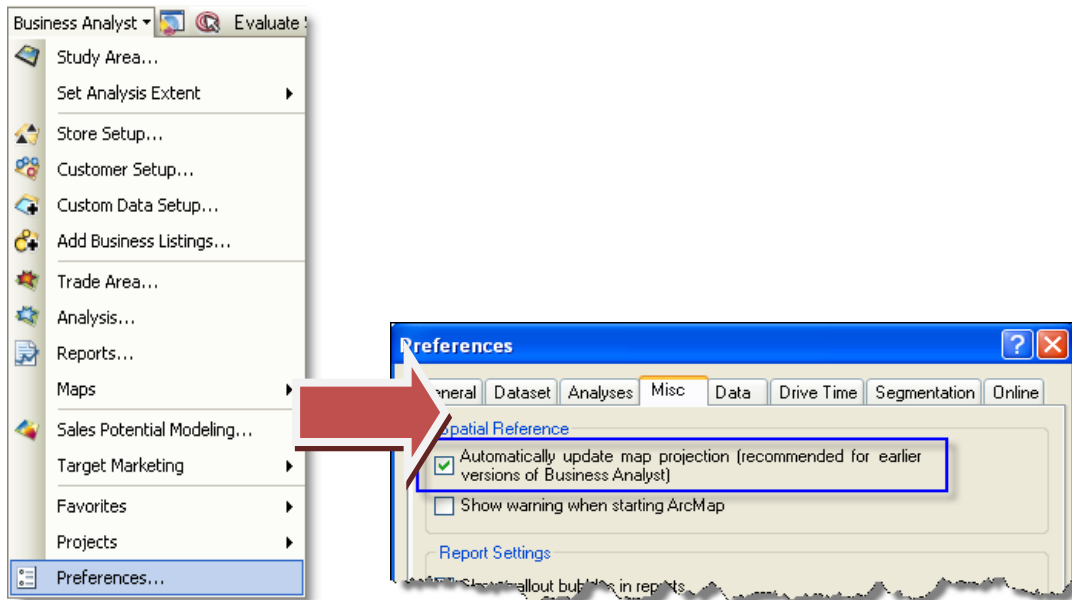


7. You may still need to zoom in or out to your given geographic area. (This is due to the change in projection. When moving from one projection to another, zoom levels and centering are often affected.) In this case, the map was zoomed in to the Drive Time Trade area.

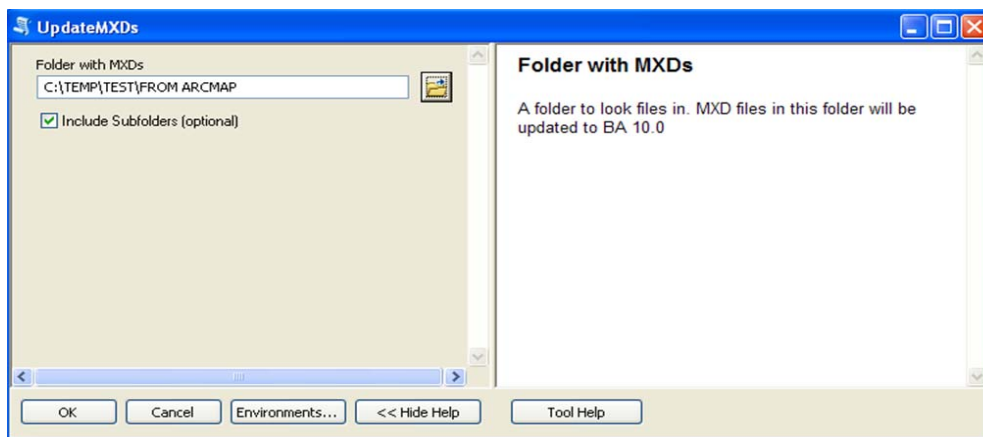


## From ArcMap

1. Start ArcMap and set the projection to Automatically update map projection.



2. Open the UpdateMXDs tool dialog box and navigate to the folder that contains your MXD(s).



3. From ArcMap, navigate to your MXD and open it. Just as in the example in From ArcCatalog, you may need to zoom in or out to see your original extent.

## From ArcMap through the Catalog Window

A third way of doing this is by simply accessing the Catalog window through ArcMap and following the steps outlined in the From ArcCatalog section above.