
ESRI Business Analyst Server 9.3.1

How to add a custom BDS layer in Business Analyst Server



ESRI

Version 1.0

December, 2009

Table of Contents

INTRODUCTION	3
CREATING A CUSTOM BDS LAYER IN BUSINESS ANALYST DESKTOP	4
UPLOADING A CUSTOM BDS LAYER TO BUSINESS ANALYST SERVER.....	12

Introduction

ESRI Business Analyst Server is a server-based business solution that integrates business logic with Geographic Information System (GIS). It allows users to perform analyses, create reports and publish business data and workflows across their organization. It also allows you to bring in custom data to perform analyses and create reports using custom datasets.

A custom BDS layer can be used with the ESRI Business Analyst Suite of products.

This document uses BGCRIME.dbf file as a working example to illustrate steps needed to create a custom BDS layer in Business Analyst Desktop and then to upload it to Business Analyst Server.

Creating a Custom BDS Layer in Business Analyst Desktop

Business Analyst allows you to create custom BDS (Business Analyst Datasource) layers in Business Analyst Desktop. Once a BDS layer is created, it is brought into Business Analyst Server dataset for use in creation of custom report templates. As an example, the BGCRIME.dbf table will be used to add a custom BDS layer in the Business Analyst Server dataset. This table contains information on crimes registered in block groups.

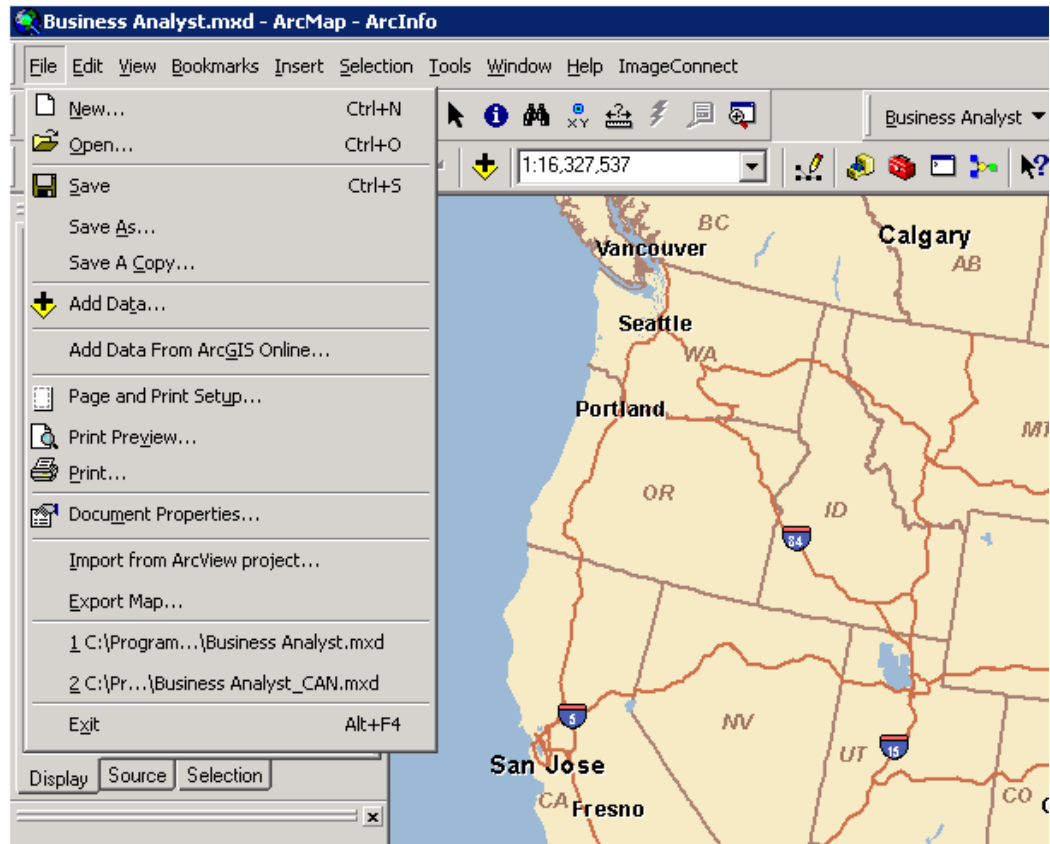
For this example, a new BDS layer, which contains block group boundaries with BGCRIME.dbf attributes as an integrated dataset, will be created. The BDS file is an XML format file.

We will create a new BDS layer in the Business Analyst output folder for custom data:

<C:\My Output Data\Projects\Default Project\Custom Analysis Layer>

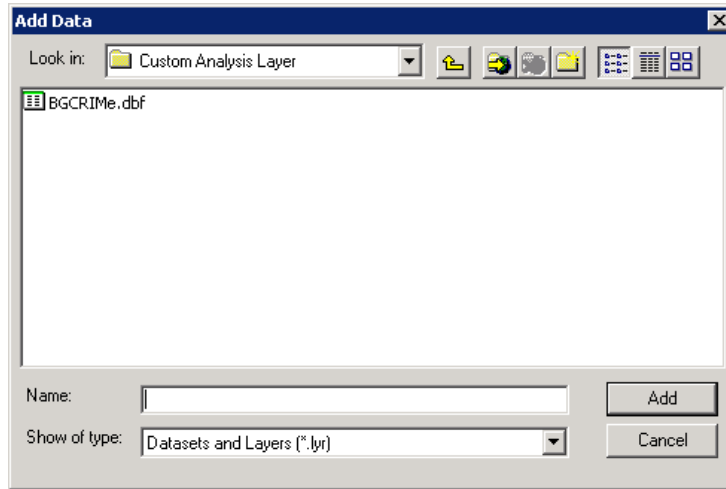
This location will store the original BGCRIME.dbf file. Business Analyst data files can be stored in any location in the file system. For the purpose of the following directions, storing them in this location will show the options for easily transferring the new BDS data layer to the Business Analyst Server dataset.

In ArcGIS Desktop, open ArcMap. To add the BGCRIME.dbf file to the current map, click File in the toolbar and then click Add Data.



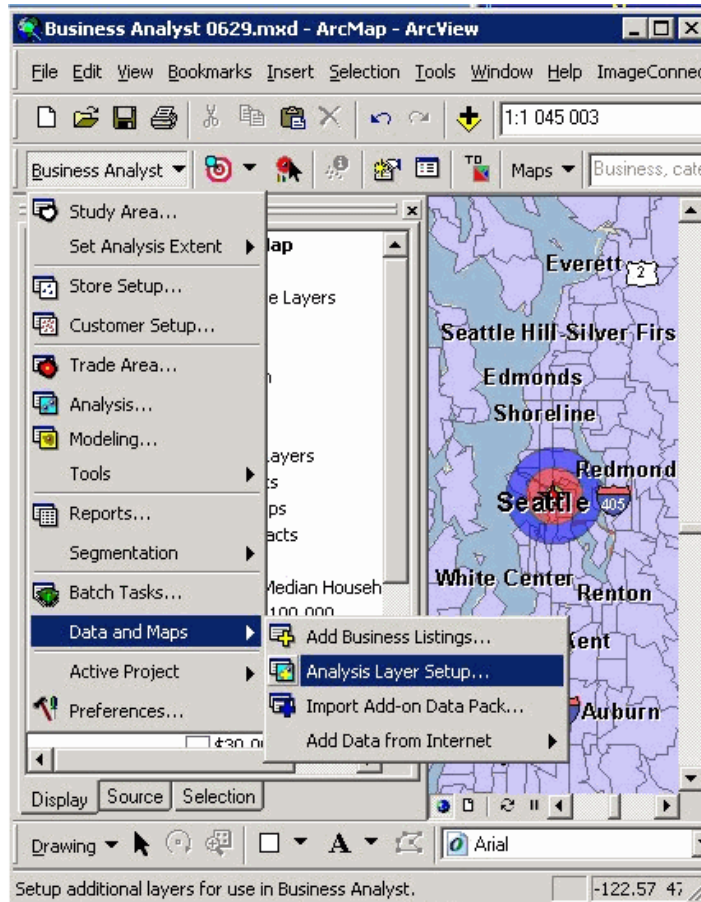
Business Analyst Server—How to add a custom BDS layer

In the Add Data dialog box, browse to the location of the BGCRIME.dbf file. Highlight the BGCRIME.dbf file and click Add.



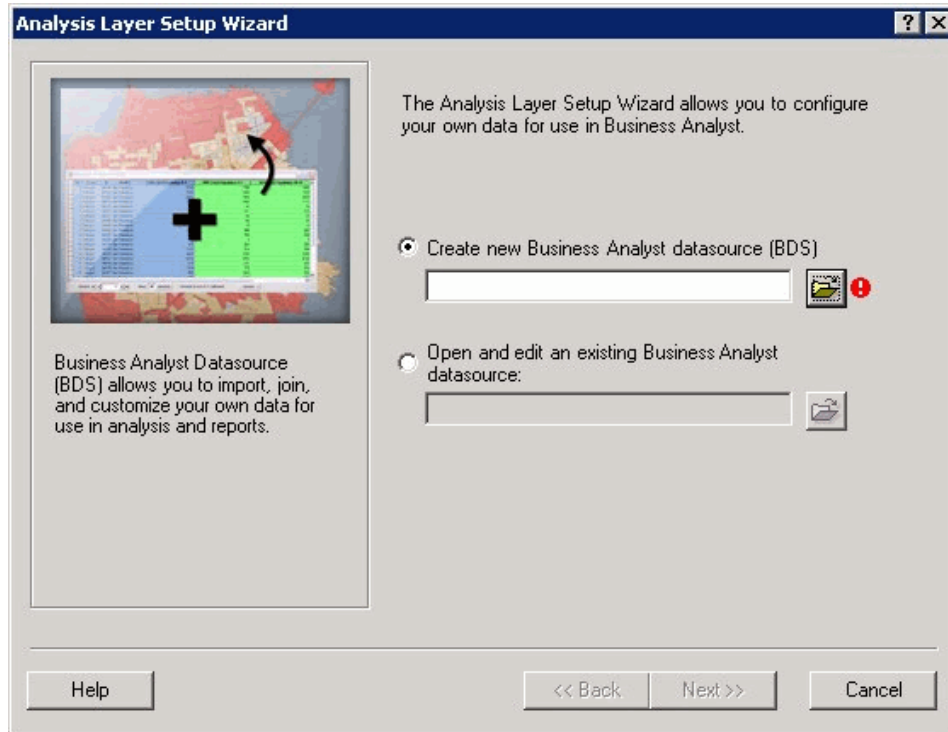
Ensure that the standard Business Analyst Block Groups layer is available on the map. If not, add this layer to the map using the Add Data.

From the Business Analyst menu, select **Data and Maps**. Highlight and click **Analysis Layer Setup**.

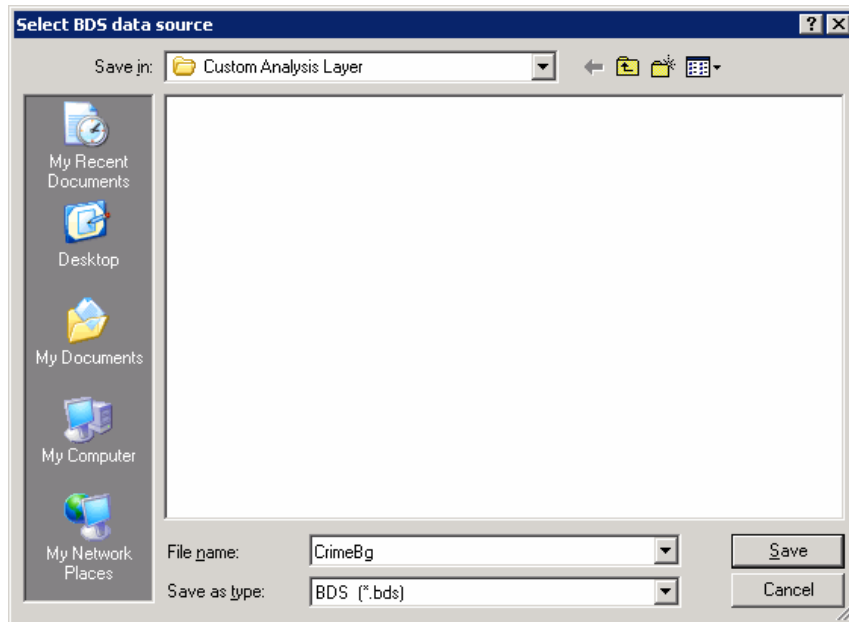


Business Analyst Server—How to add a custom BDS layer

The Analysis Layer Setup Wizard dialog box appears. Click the **Create new Business Analyst datasource (BDS)** radio button and click Browse.

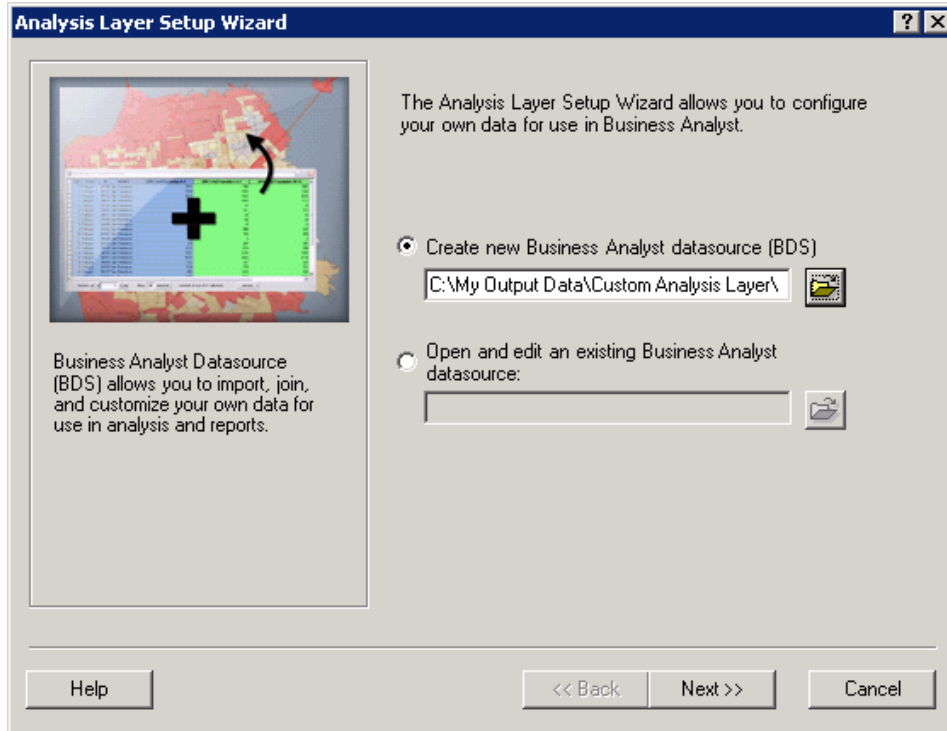


Browse to the location of the BGCRIME.dbf file, type "CrimeBg" in the File name text box and click Save.

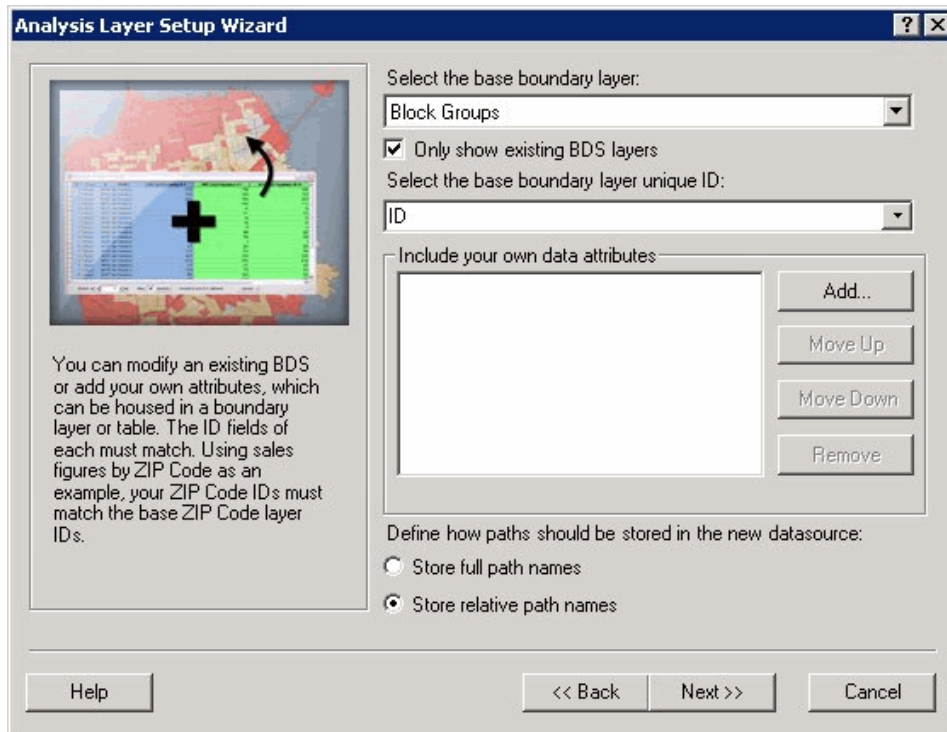


You are returned to the previous dialog box with Next enabled.

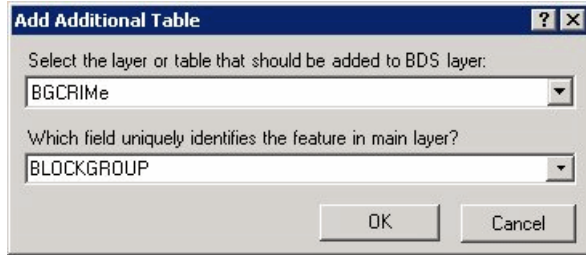
Click Next.



Next, select Block Groups layer in the first drop-down list and select ID in the second drop-down list. Ensure that **Store relative path names** radio button is checked. Click Add.

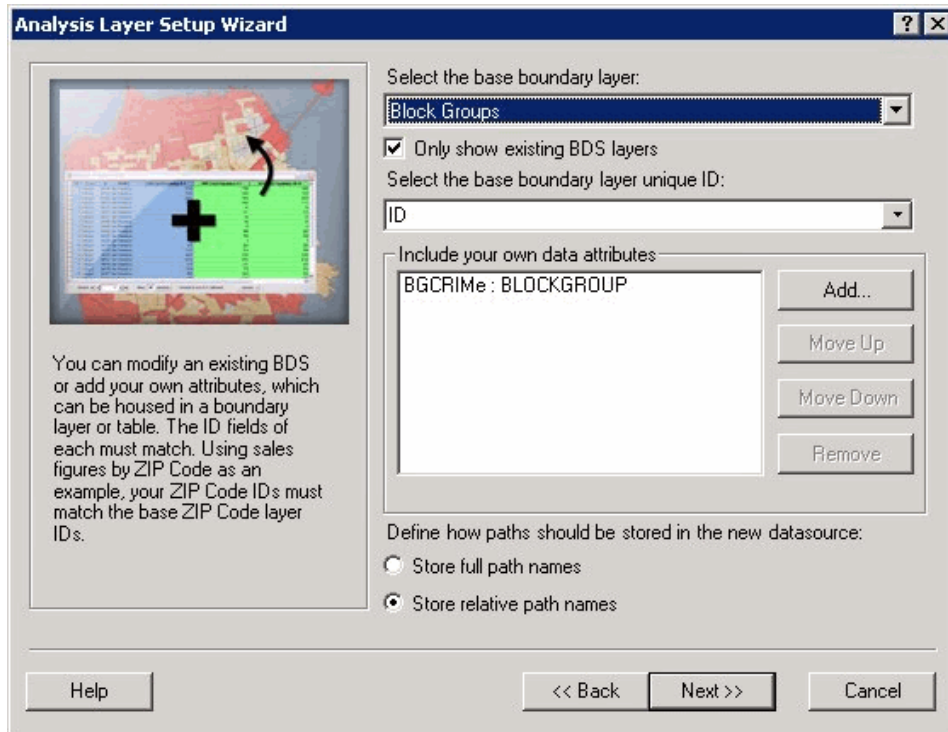


The Add Additional Table dialog box appears. Select BGCRIME in the first drop-down list. Then select BLOCKGGROUP in the second drop-down list and click OK.

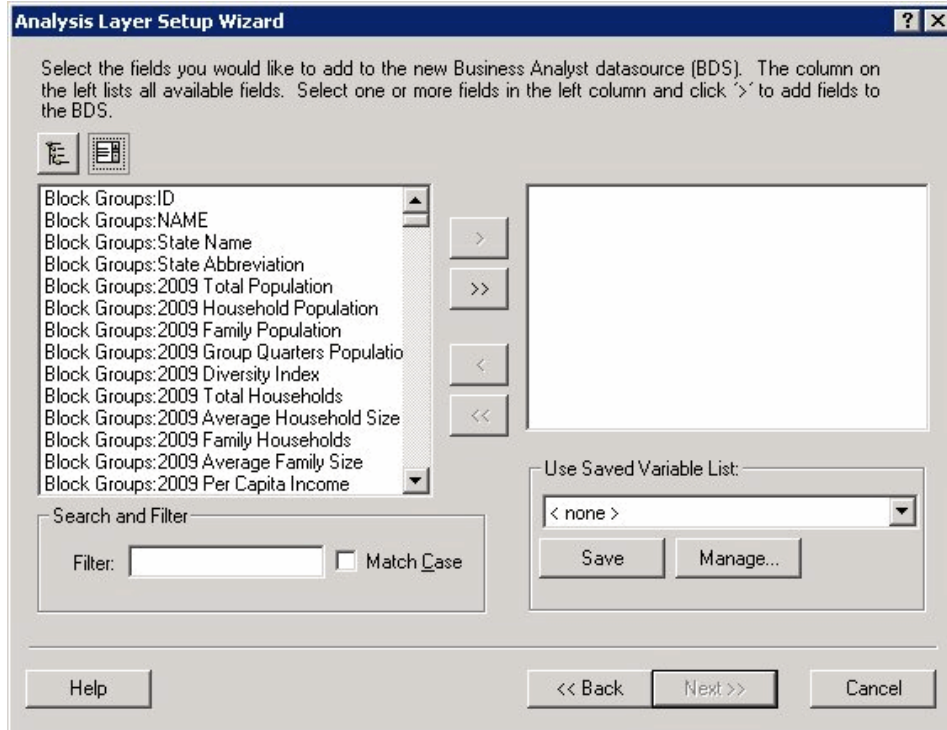


You are returned to the previous dialog box. The BLOCKGGROUP field in the BGCRIME.dbf table contains an ID of the associated Block Group. Using the ID field from the Block Group layer and the BLOCKGGROUP field from the BGCRIME.dbf table, the BGCRIME.dbf table is connected to the Block Groups as a new custom layer.

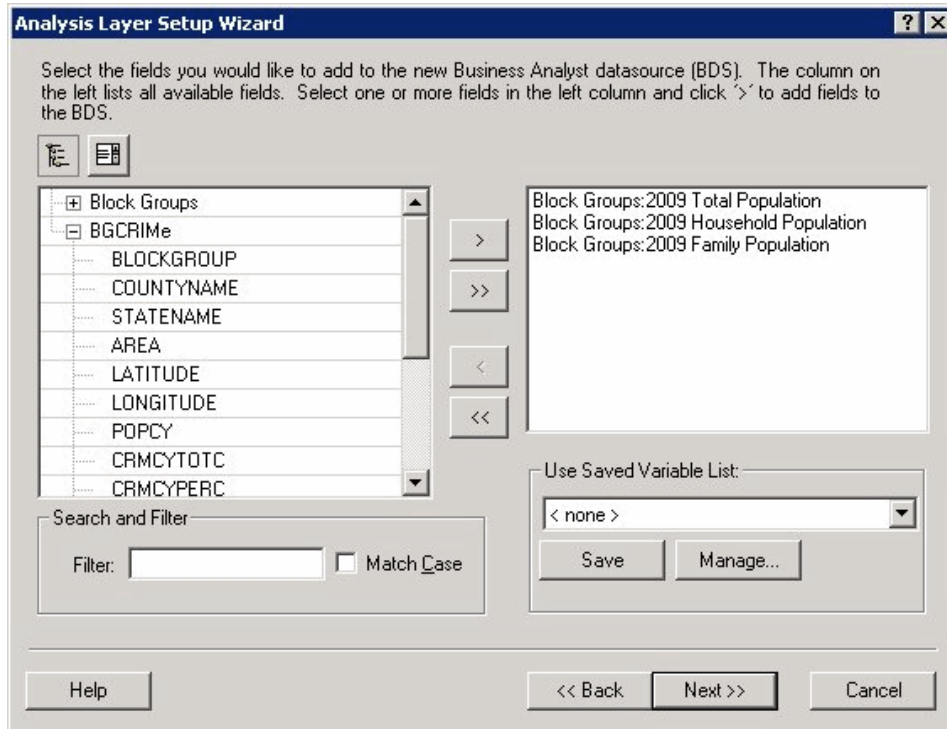
Click Next.



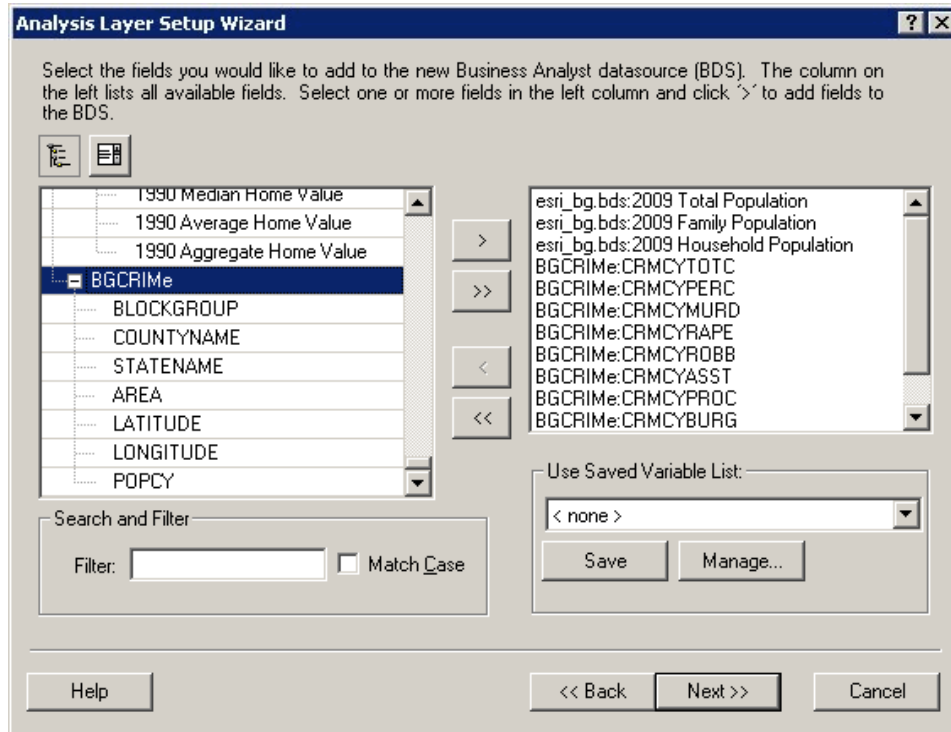
Next, add fields to the CrimeBg dataset. CrimeBg dataset will contain fields from the Block Group and BGCRIME tables.



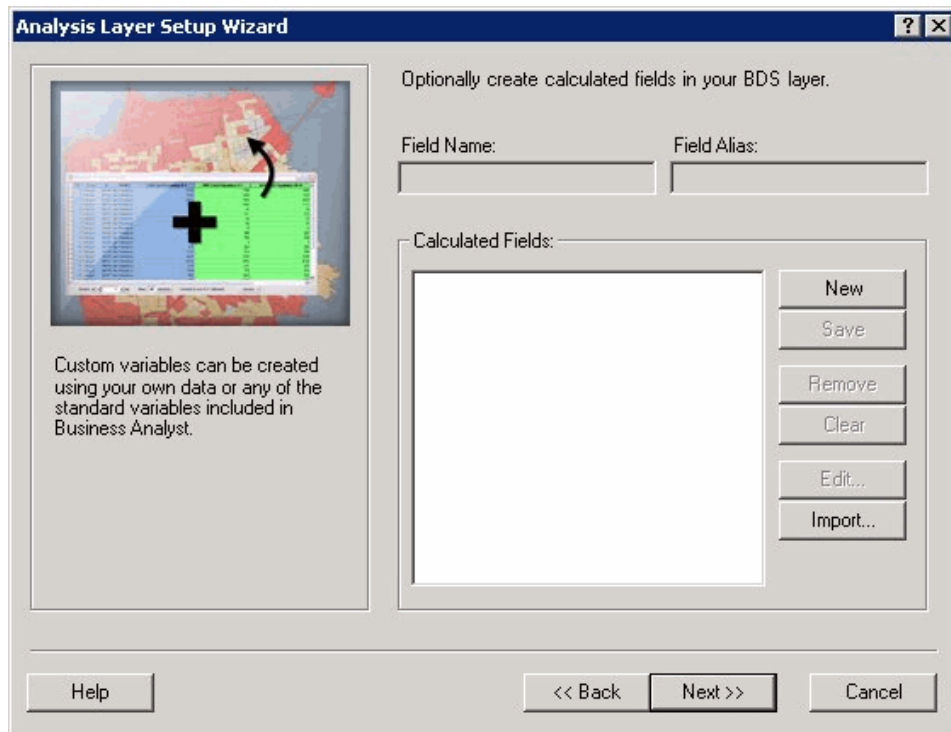
In this example, select Total Population, Household Population, and Family Population from the Block Group table.



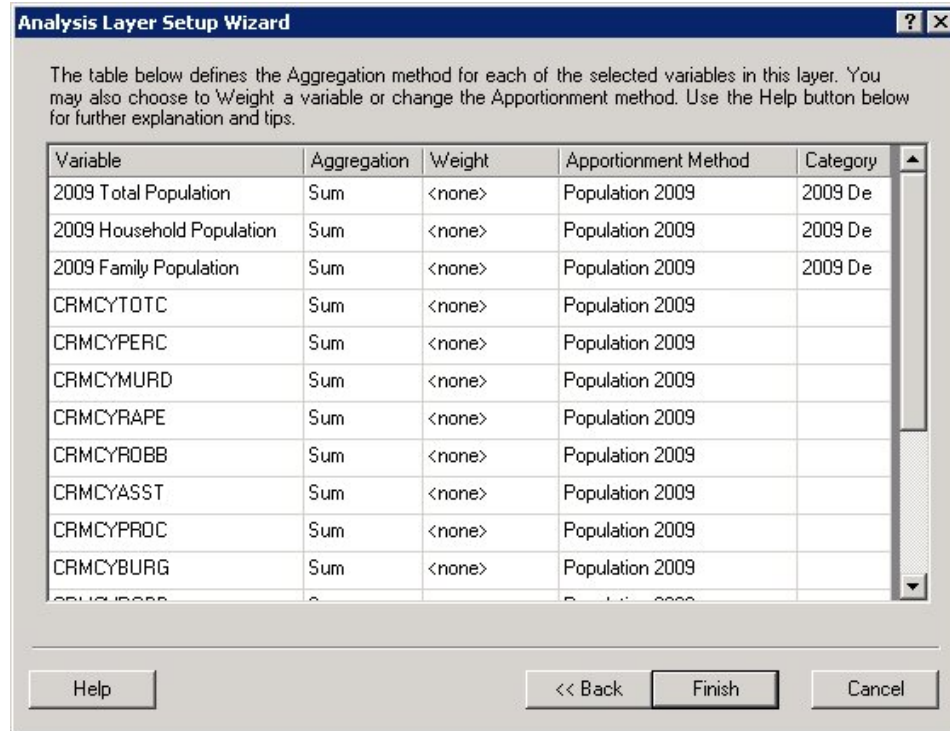
Also, select 10 fields with crime data from the BGCRIME table. Once all the fields are selected, click the Next button.



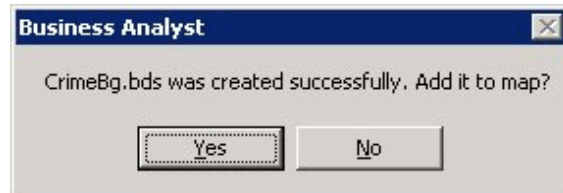
Click Next.



Click Finish.



When the BDS layer is created, the following dialog box appears.



Click Yes to add the layer to the map. Another CrimeBg.bdr file is created under the same folder. It contains additional information about the layer.

The created BDS layer is intended for use in the Business Analyst Desktop. In order to use it in the Business Analyst Server, you need to upload it on a server using the Upload/Download Projects feature of the Business Analyst Desktop.

The difference between Business Analyst Desktop and Server BDS layers is the specification of the BDS workspace path for a BDS layer. In a desktop BDS layer this path usually looks as follows:

```
<WS PathName="C:\Program Files\ArcGIS\Business Analyst\Data\BDS"
  CLSID="{9E80DD48-E672-4978-A5A1-C03F9C9B29BC}" />
```

When a desktop BDS layer is uploaded to a Business Analyst Server, its workspace path is automatically corrected.

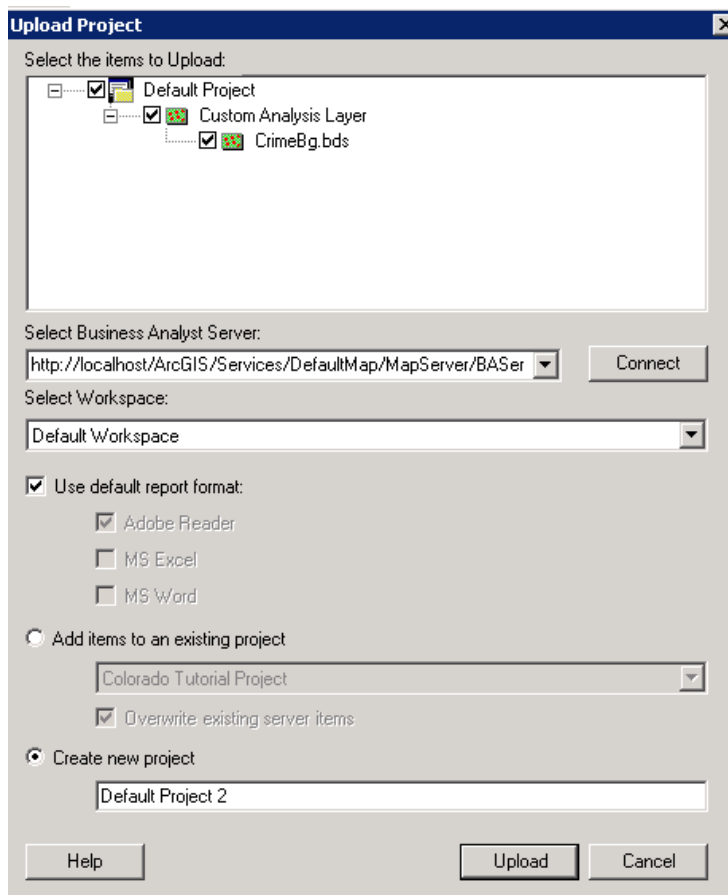
Uploading a Custom BDS Layer to Business Analyst Server

The Upload/Download Projects feature allows you to import the BDS layer from Business Analyst Desktop to Business Analyst Server.

To upload a project to Business Analyst Server, follow these steps:

In ArcGIS Desktop, open ArcCatalog.

1. Navigate to the Business Analyst Data folder.
2. Right-click on the project containing the CrimeBg BDS layer.
A dialog box appears showing the Uploaded Project.
3. Select the project.
4. Use the Select Business Analyst Server drop-down list to select the URL. Note that a tooltip is provided to construct this URL.
If this dialog box has been used prior, the drop-down list shows the previous connections.
5. Next, you can select the workspace, check Use default report format check box to set the default and create a new project.
Upload Project dialog box will look similar to the one below.



6. Click Upload.

Business Analyst Server—How to add a custom BDS layer

The custom CrimeBG.bds layer will be uploaded to the UserData folder in the Business Analyst Server dataset. Its workspace path is corrected to "..\Data\BDS" location. This layer will be available for use as a summarization layer for creating custom report templates.