
What's New in Job Tracking for ArcGIS (JTX) 9.3

July 2008



JTX application redesign	2
Multiple geodatabase support	3
Spatial notifications	3
Task Assistant Manager integration	3
Simple reporting engine	4
Job filtering	4
Advanced job status options	5
General functionality	5
Configuration	7
For the developers.....	8
Administration	8
Compatibility and Migration.....	8

JTX APPLICATION REDESIGN

Probably one of the first things you'll notice when getting set up with the latest version of JTX is the redesign of the client application. A few of the highlights include:

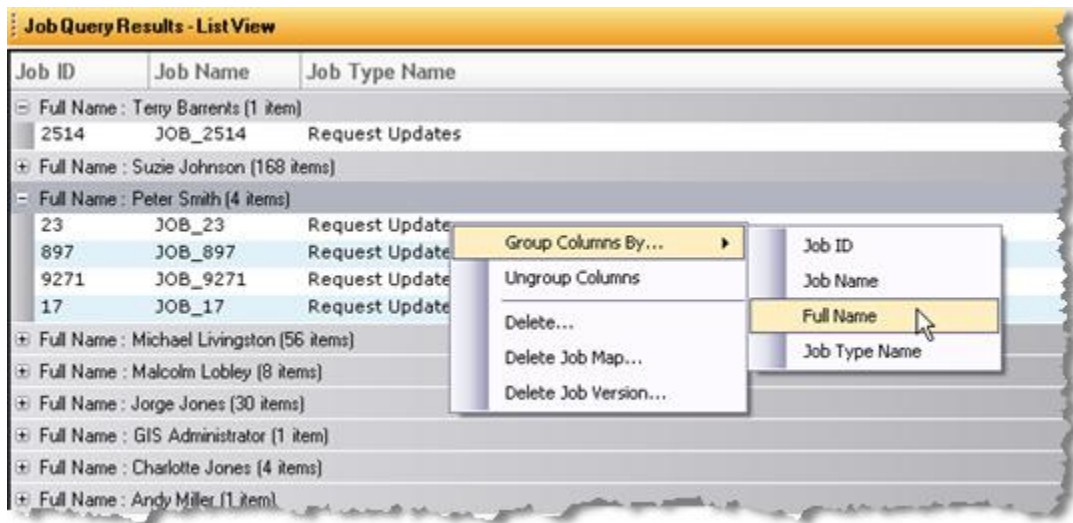
- A new concept of a view into the JTX system has been added. Accordion menus on the left side allow you to view your job information in different ways. At the current release, we have the tradition jobs view and a reporting view.
- The JTX Application can be customized with your own tools, job tabs, and views. Check out the developer kit for examples of how to build and implement your own customizations.
- The job tabs can now be arranged to show more job information all at once. The tabs can be picked up and dropped in a different location or left floating while you work.

The screenshot displays the JTX - Job Tracking for ArcGIS application interface. The window title is "JTX - Job Tracking for ArcGIS". The interface is divided into several sections:

- Jobs (Left Sidebar):** An accordion menu showing categories like "Public Queries", "General Queries", "Group Queries", "Personal Queries", and "User Queries".
- Job Query Results - MapView (Center):** A map view showing a street grid with several orange rectangular markers indicating job locations. Below the map are "List" and "Map" tabs.
- Job Properties (Bottom Center):** A panel displaying job details for "JOB_14". It includes fields for "Job Owner" (Terry Bent), "Job Name" (JOB_14), "Priority" (Medium), and "Parent Job". It also shows "Job Status" (Editing) and "Current Step" (Edit Data).
- Job Workflow (Right Panel):** A flowchart diagram showing the process flow: Prepare (Start) -> Check Version (Decision) -> Create Version (Process) -> Edit Data (Process) -> QC Data (Process) -> More Edits? (Decision). A feedback loop labeled "More Edits?" returns from the decision to the "Edit Data" process. A path labeled "Version Exists" returns from the "Check Version" decision to the "Edit Data" process.

A callout box with a yellow background and black border points to the workflow diagram, containing the text: "Workflow can be viewed at the same time as the job tabs. All the tabs in the application can be picked up and dropped somewhere else or left floating."

- Group query results in the list view by any field returned.



MULTIPLE GEODATABASE SUPPORT

Manage data distributed across multiple ArcSDE geodatabases with one JTX repository. At previous JTX releases, you were only able to manage data one ArcSDE geodatabase instance, but now if your data are distributed across multiple geodatabases, JTX can handle it. Configure each geodatabase connection as a Data Workspace in the JTX system.

SPATIAL NOTIFICATIONS

- Receive an email when changes are made in the database. You can configure rules to be sent when changes are made in a feature class, to a specific feature, or within a specified area.
- Send notifications when the data is posted or by querying the geodatabase archive tables.

TASK ASSISTANT MANAGER INTEGRATION

We are happy to be able to include the Task Assistant Manager (TAM) with JTX at 9.3. The Task Assistant Manager provides an easy way for experienced GIS users to provide step-by-step instructions for performing various GIS tasks or workflow processes within ArcMap. These tasks can then be used to assist other GIS users in quickly and correctly completing those GIS workflows.

- Store TAM workflows in the JTX Repository.
- Open TAM workflows stored with JTX as part of the Launch ArcMap process.

SIMPLE REPORTING ENGINE

Configure simple reports to summarize the work in your system.

The screenshot shows the JTX - Job Tracking for ArcGIS application. The 'Reports' section on the left lists various report types, including 'Status Report', 'Workload', 'Data edits summary', 'Scheduling', 'Due Next Week', 'Due Next Month', 'Type specific', 'Mapping jobs', and 'Data management'. A callout points to this list, stating 'Configured reports'. The main window displays a 'Transaction Report' with the following content:

Transaction Report [Export Report](#)

This report shows a summary of transactions that have been stored.

Dataset Edited	Logged by	Count
JTX93.DATA.PARCELS		
	Jake "Gordo" Palmer	22
	Suzie Johnson	36
	Terry Barrents	25
Total Edits:		83

Dataset Edited	Logged by	Count
JTX93.DATA.STREETS		
	Jake "Gordo" Palmer	3
Total Edits:		3

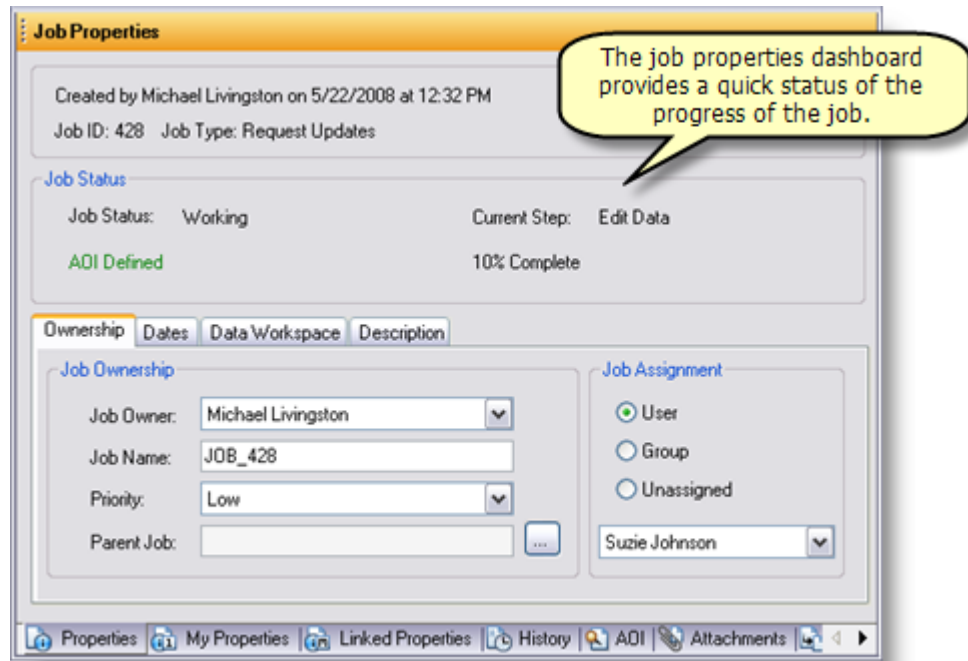
A callout at the bottom of the screenshot states: 'When more than one report is executed, tabs appear.' The application interface includes a menu bar (File, Edit, View, Help), a toolbar, and a status bar at the bottom showing the user 'Suzie Johnson', the database 'TestDB', and the time '9:12 PM'.

JOB FILTERING

- Restrict access to job types and jobs in the JTX application by applying a job filter.
- Job type filters: allow users to only create and view jobs of a specific type in the main application.
- User group filters: restrict users from assigning jobs to groups or users in groups that they don't belong to themselves. These filters also restrict users from viewing jobs that are currently assigned to groups or members of groups they don't belong to.

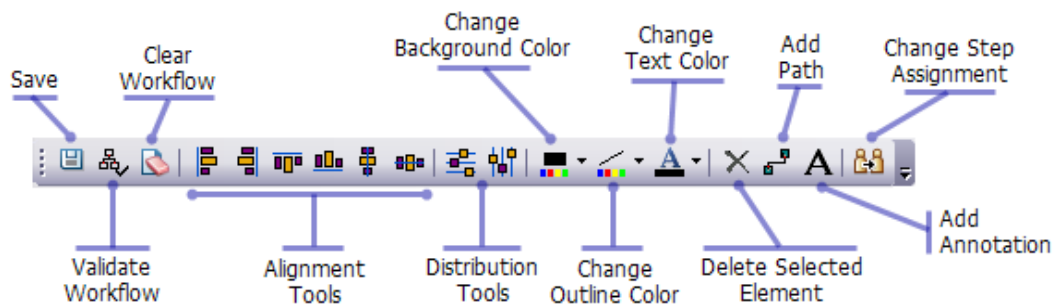
ADVANCED JOB STATUS OPTIONS

- Change the status of a job based on the step in the workflow.
- Track the % complete of a job based on steps in the workflow and the percent complete of the active step.



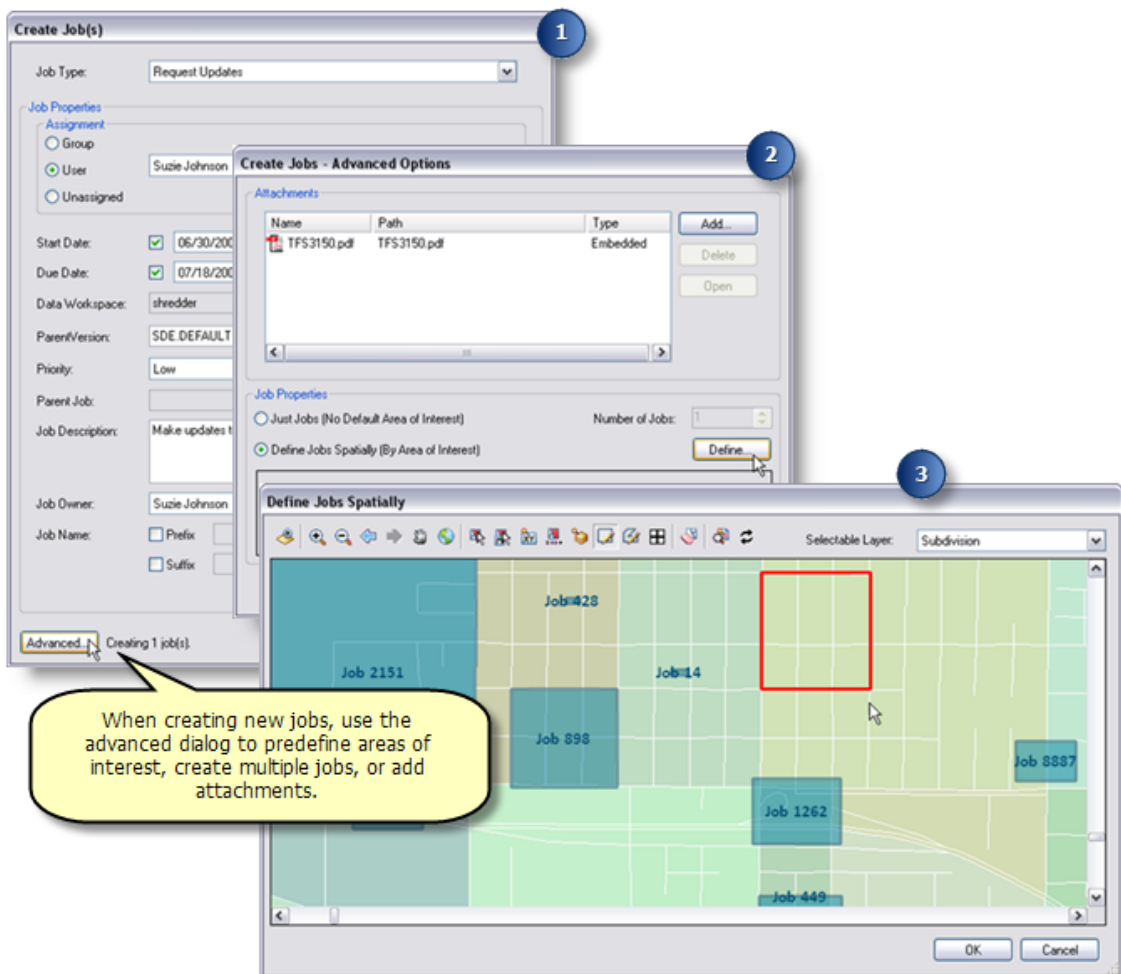
GENERAL FUNCTIONALITY

- Enhanced workflow authoring tools. Basic element alignment tools, color selection, and different step shape options have been added.



- The find jobs tool has had an upgrade. The simple find by ID, Name, and Description is still there, but has been enhanced with an advanced tabs allowing you to define more complicated queries for a quick search.
- Searches are presented in the list queries. If you perform a certain search regularly, you can save that search as a permanent user query.

- A simple query builder has been built for defining your job queries without needing to know the ins and outs of SQL. The traditional SQL query builder interface is still there for those that have requirements for advanced queries.
- An enhancement to the workflow documentation options are Step Descriptions. Step descriptions allow you to provide details about what a step does or what the user should do to accomplish the current step in the workflow.
- The job management utilities have moved into the main application. To delete jobs or job elements, select the jobs in the list view, then right click. The context menu provides you with those tools.
- Run workflow steps from toolbar. When a job is selected, users can execute or mark as done workflow steps from the main application toolbar.
- Define AOI by entering coordinates.
- Redesigned create job experience. All the create job options are now on one dialog. If you often used the Create Jobs by Grid or Create Jobs by Feature Class tools, now you can find them on the Advanced options of the Create Job dialog.

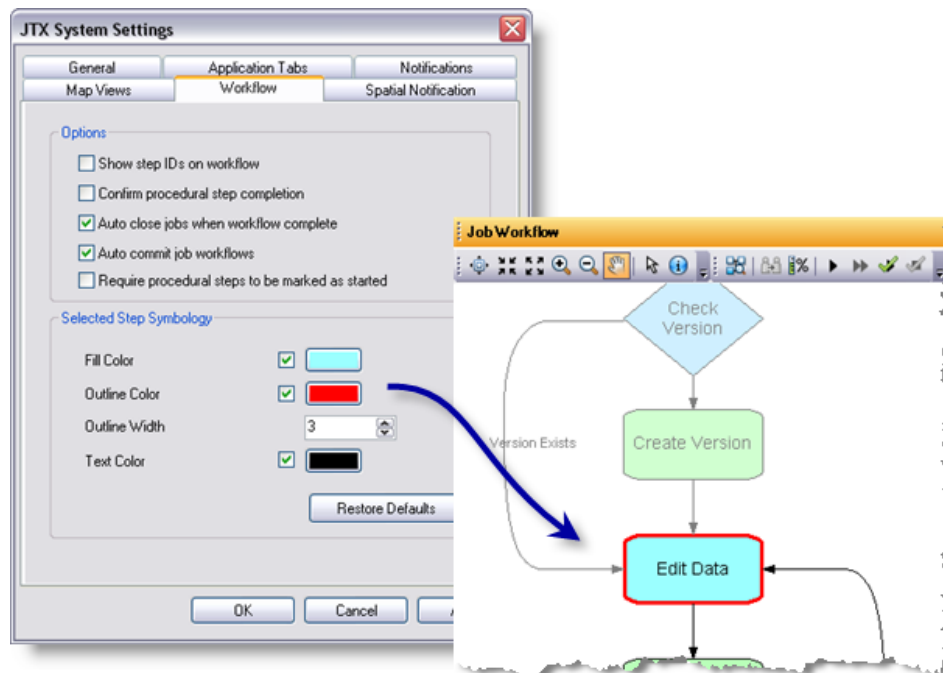


CONFIGURATION

- New step type execution options have been added to provide more flexibility in defining what steps do and to provide more functionality for workflow execution via JTX Server. The list of options is now:

Procedural	Manual step with no managed execution.
Custom step object	Calls a custom class implementing IJTXCustomStep.
Open File	Opens a file from the workflow.
Executable	Launches an executable.
Launch URL	Launches a URL.
Ask Question	Asks the user a question with configurable answers.

- Choose AOI selection color
- Choose the symbology used for the active step in the workflow.



- Configure extended property tab names on the Job Type.

FOR THE DEVELOPERS

- A new interface for custom step development, `IJTXCustomStep`, allows you to provide argument verification feedback to your users and create dialog that can be used for defining the step arguments.
- The client application can be extended in many ways:
 - Custom Steps
 - Custom Job Tabs (build your own view of the extended properties for example)
 - Custom Views (build your own view into another system or provided a specialized view of the JTX system)
 - Custom Commands (Add buttons to the application toolbars for specialized tasks within the application)

ADMINISTRATION

- JTX 9.3 supports all RDBMS types supported by ArcSDE 9.3.
- When performing the post installation, you can choose a database storage keyword.
- The database connection file, now with a `.jtc` file extension, can be used to distribute the connection information for the JTX system to your team. Users can double click this file to add a JTX database connection and set the default JTX database all at once.

COMPATIBILITY AND MIGRATION

- JTX 9.3 applications and components will not run successfully against a previous JTX system table schema. The contents of the tables will need to be migrated into the JTX 9.3 System Table schema.
- If you are currently using a JTX 3.x version, you can migrate your system tables to the updated schema using the Post Installation utility that included with the Administrator edition.
- If you are currently using a JTX 2.x version, please contact ESRI technical support for guidance on upgrading to JTX 9.3.
- Custom Code written against the JTX 3.x API will need to be recompiled to work against the JTX 9.3 libraries.