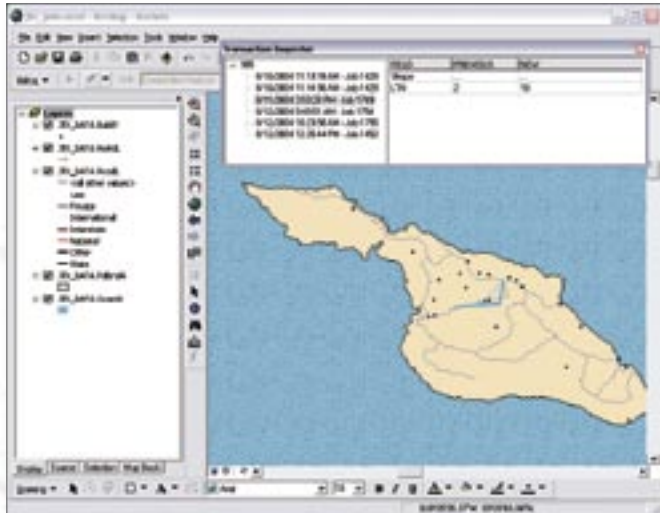
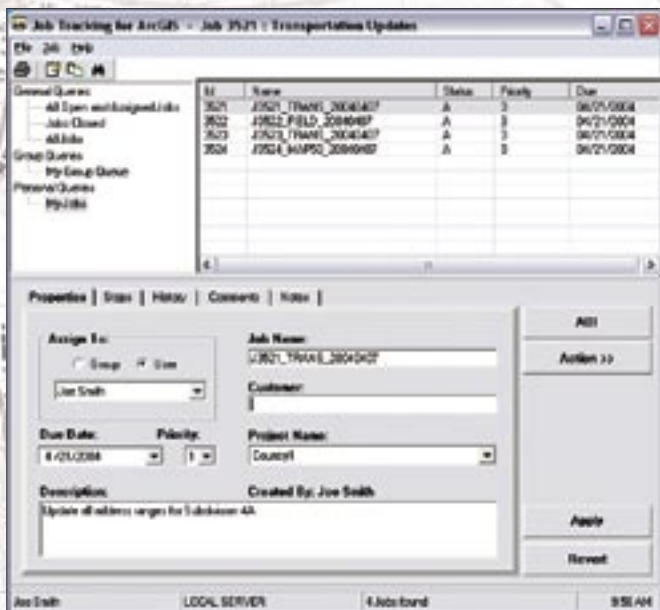


Job Tracking for ArcGIS (JTX)



Job Tracking for ArcGIS (JTX) provides enterprise work flow management within ArcGIS.

GIS Workflow Management



A centralized work flow management framework simplifies and automates many aspects of job management.

Enterprise GIS Workflow Management and Job Tracking

Job Tracking for ArcGIS® (JTX™) is an enterprise workflow management extension that provides an integration framework for ArcGIS multiuser geodatabase environments. It simplifies many aspects of job management and tracking and streamlines the work flow, resulting in significant time savings for any implementation.

Provided are tools for allocating resources and tracking the status and progress of jobs. A detailed history of job activities is automatically recorded for each job to give managers a play-by-play account of how the job was completed. This information can be supplemented with comments and notes to provide even richer documentation.

Job Tracking for ArcGIS (JTX) handles complex geodatabase tasks behind the scenes by creating, managing, and facilitating access to geodatabase versions. A geographic area can be associated with the job to identify its location in the database and in relation to other jobs (which can reduce duplication of effort). A comprehensive transaction management infrastructure is provided to support historical tracking and persistent storage of information about what features were edited in each job and the details of what was added, changed, or deleted. This information is maintained long after the job has been completed.

Developers can utilize Job Tracking for ArcGIS (JTX) integration points and the application programming interface to extend existing or off-the-shelf solutions or embed its functionality in new applications.

With Job Tracking for ArcGIS (JTX), you can

- Organize, standardize, and streamline project work flows to provide a consistent user experience, reduce repetitive setup tasks, and automate key processes.
- Easily create and assign work to appropriate resources and distribute work geographically to limit redundancy and contention.
- Simplify creation, management of, and access to geodatabase versions for more efficient and accurate multiuser editing.
- Centralize all job-related metadata for on-demand review of information, status, and distribution of the work being performed.



For more information, visit www.esri.com/jtx or e-mail plts@esri.com.



For more than 35 years ESRI has been helping people manage and analyze geographic information. ESRI offers a framework for implementing GIS technology in any organization with a seamless link from personal GIS on the desktop to enterprisewide GIS client/server and data management systems. ESRI® GIS solutions are flexible and can be customized to meet the needs of our users. ESRI is a full-service GIS company, ready to help you begin, grow, and build success with GIS.

Corporate

ESRI
380 New York Street
Redlands, California
92373-8100, USA
Telephone: 909-793-2853
Fax: 909-793-5953

For more information
on ESRI, call

1-800-447-9778

(1-800-GIS-XPRT)

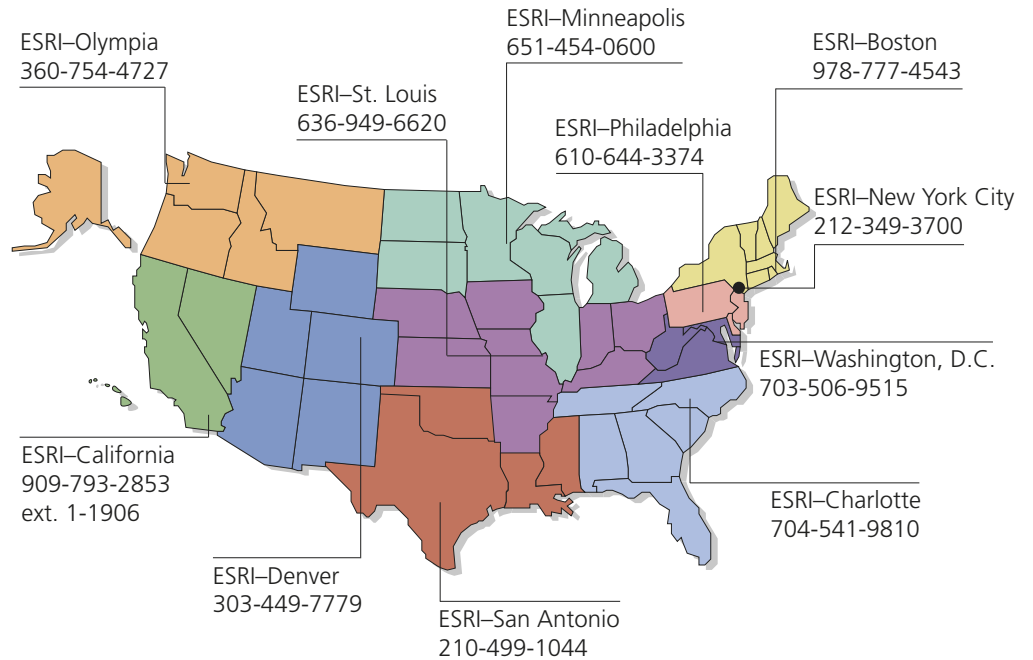
or contact an ESRI value-added
reseller near you.

Send e-mail inquiries to
info@esri.com

Visit ESRI's Web page at
www.esri.com

Outside the United States,
contact your local ESRI distributor.
For the number of your distributor,
call ESRI at 909-793-2853,
ext. 1235,
or visit our Web site at
www.esri.com/international

Regional Offices



International Offices

Australia
www.esriaustralia.com.au

Finland
www.esri-finland.com

Italy
www.esriitalia.it

Romania
www.esriro.ro

Belgium/Luxembourg
www.esribelux.com

France
www.esrifrance.fr

Japan
www.esrij.com

Singapore
www.esrisa.com

Bulgaria
www.esribulgaria.com

Germany/Switzerland
www.esri-germany.de
www.esri-suisse.ch

Korea
www.esrikr.co.kr

Spain
www.esri-es.com

Canada
www.esricanada.com

Hungary
www.esrihu.hu

Netherlands
www.esrinl.com

Sweden
www.esri-sweden.com

China (Beijing)
www.esrichina-bj.cn

India
www.esriindia.com

Poland
www.esripolska.com.pl

Thailand
www.esri-th.com

China (Hong Kong)
www.esrichina-hk.com

Indonesia/Malaysia
62-21-527-1023
603-7874-9930

Portugal
www.esri-portugal.pt

United Kingdom
www.esriuk.com

Venezuela
www.esriven.com



Place ESRI business partner or distributor address here.

Copyright © 2005 ESRI. All rights reserved. ESRI, the ESRI globe logo, ArcGIS, JTX, ArcMap, ArcInfo, @esri.com, and www.esri.com are trademarks, registered trademarks, or service marks of ESRI in the United States, the European Community, or certain other jurisdictions. Other companies and products mentioned herein are trademarks or registered trademarks of their respective trademark owners.



No. GS-35F-5086H