

ArcGIS® 9

Installing ArcPad® 7.0



Copyright © 2000–2005 ESRI Inc. and its licensor(s).
All Rights Reserved.
Printed in the United States of America.

The information contained in this document is the exclusive property of ESRI and its licensor(s). This work is protected under United States copyright law and the copyright laws of the given countries of origin and applicable international laws, treaties, and/or conventions. No part of this work may be reproduced or transmitted in any form or by any means, electronic or mechanical, including photocopying or recording, or by any information storage or retrieval system, except as expressly permitted in writing by ESRI. All requests should be sent to Attention: Contracts Manager, ESRI, 380 New York Street, Redlands, CA 92373-8100, USA. The information contained in this document is subject to change without notice.

LICENSOR CREDITS

Portions of this work contain the intellectual property of MapTel and are used herein under license.
Copyright © 1995–2005 MapTel. All rights reserved.

Portions of this work contain the intellectual property of LizardTech, Inc., and are used herein under license.
Copyright © 1995–2004 LizardTech, Inc. All rights reserved. MrSID is protected by U.S. Patent No. 5,710,835. Foreign Patents Pending.

Portions of this work contain the intellectual property of Unisearch Limited and are used herein under license.
Copyright © 2001 Unisearch Limited. All rights reserved.

DATA CREDITS

Elmore sample data: Coliban Region Water Authority, Bendigo, Victoria, Australia. The Coliban Region Water Authority (“The Authority”) believes that the information supplied is correct, however it does not warrant the accuracy of that information. The Authority disclaims responsibility for any omissions, inaccuracies, discrepancies, errors of scale or any inconsistencies, which may exist between the actual and the digital data supplied. The Authority further disclaims responsibility for any loss or damage including consequential loss or damage, suffered by any person relying upon such information, whether that loss or damage is caused by negligence, or from any other cause whatsoever, on the part of the Authority, its employees agents and contractors.

Redlands trees sample data: Source: West Coast Arborists, Inc.

Redlands streets sample data: Tele Atlas. Copyright © 2005 Tele Atlas. All rights reserved.

Nyon data for screenshots: Tele Atlas N.V. Copyright © 2005 Tele Atlas N.V. All rights reserved.

QuickBird image of Redlands: DigitalGlobe, Inc. Copyright © 2005 DigitalGlobe, Inc. All rights reserved.

U. S. GOVERNMENT RESTRICTED/LIMITED RIGHTS

Any software, documentation, and/or data delivered hereunder are subject to the terms of the License Agreement. In no event shall the U.S. Government acquire greater than RESTRICTED/LIMITED RIGHTS. At a minimum, use, duplication, or disclosure by the U.S. Government is subject to restrictions as set forth in FAR §52.227-14 Alternates I, II, and III (JUN 1987); FAR §52.227-19 (JUN 1987) and/or FAR §12.211/12.212 (Commercial Technical Data/Computer Software); and DFARS §252.227-7015 (NOV 1995) (Technical Data) and/or DFARS §227.7202 (Computer Software), as applicable. Contractor/Manufacturer is ESRI, 380 New York Street, Redlands, CA 92373-8100, USA.

DISCLAIMER

THE DATA INCLUDED IN THIS WORK IS FROM AN INDEPENDENT COMPANY AND, AS SUCH, ESRI MAKES NO GUARANTEES AS TO THE QUALITY, COMPLETENESS, AND/OR ACCURACY OF THE DATA. EVERY EFFORT HAS BEEN MADE TO ENSURE THE ACCURACY OF THE DATA INCLUDED IN THIS WORK, BUT THE INFORMATION IS DYNAMIC IN NATURE AND IS SUBJECT TO CHANGE WITHOUT NOTICE. ESRI AND THE DATA VENDOR(S) ARE NOT INVITING RELIANCE ON THE DATA, AND ONE SHOULD ALWAYS VERIFY ACTUAL DATA AND INFORMATION. ESRI DISCLAIMS ALL OTHER WARRANTIES OR REPRESENTATIONS, EITHER EXPRESSED OR IMPLIED, INCLUDING, BUT NOT LIMITED TO, THE IMPLIED WARRANTIES OF MERCHANTABILITY OR FITNESS FOR A PARTICULAR PURPOSE. ESRI AND THE DATA VENDOR(S) SHALL ASSUME NO LIABILITY FOR INDIRECT, SPECIAL, EXEMPLARY, OR CONSEQUENTIAL DAMAGES, EVEN IF ADVISED OF THE POSSIBILITY THEREOF. ARCPAD SOFTWARE IS NOT LICENSED FOR NAVIGATIONAL USE.

ESRI, the ESRI globe logo, ArcPad, ArcIMS, the ArcIMS logo, Geography Network, ArcGIS, the ArcGIS logo, ArcView, ArcEditor, ArcInfo, ArcMap, Avenue, www.esri.com, and www.geographynetwork.com are trademarks, registered trademarks, or service marks of ESRI in the United States, the European Community, or certain other jurisdictions.

Other companies and products mentioned herein are trademarks or registered trademarks of their respective trademark owners.

Contents

Introduction	1
Installing ArcPad 7.0 on Windows 2000 or XP	3
Introduction	3
System requirements	3
Minimum system requirements	3
Preparing for installation	4
Installing Microsoft ActiveSync	4
Installing Microsoft XML parser	4
If you have an earlier version of ArcPad	4
Installing ArcPad 7.0	5
ArcPad CD-ROM contents	5
ArcPad 7.0 sample data (optional)	7
ArcPad 7.0 language packs	7
After running setup	7
Entering your registration number	8
Uninstalling ArcPad 7.0	8
Installing ArcPad 7.0 on Windows Mobile or Windows CE	9
Introduction	9
System requirements	9
Minimum system requirements	9
Recommended system requirements	10
Preparing for installation	10
Installing Microsoft ActiveSync	10
If you have an earlier version of ArcPad	10
Installing ArcPad 7.0	11
ArcPad 7.0 sample data (optional)	13
ArcPad 7.0 language packs (optional)	13
VBScript Runtime Library for Windows Mobile (optional)	14
After running setup	14
Entering your registration number	15
Uninstalling ArcPad 7.0	15
Uninstalling on Windows Mobile	15
Uninstalling on Windows CE	16
Uninstalling the ArcPad 7.0 components	17
Troubleshooting your installation	17

Installing on Windows Mobile	17
“Unknown Publisher” message when installing on Windows Mobile 5.0 Phone Edition	17
An error message occurs when installing ArcPad 7.0	18
Installing on Windows CE .net devices	18
Valid registration number is not accepted on Windows Mobile or Windows CE	19

Introduction

ESRI ArcPad® 7.0 includes the following:

- ArcPad for Windows® 2000 and XP computers
- ArcPad for Windows Mobile and Windows CE computers
- ArcPad language packs
- ArcPad sample data
- Projection and datum transformation files
- ArcPad Tools for ArcGIS® Custom tools for ArcGIS Desktop to assist in preparing data for use with ArcPad 7.0
- Documentation

ArcPad 7.0 includes language packs for the following languages:

- Chinese (Traditional, Hong Kong)
- Chinese (Simplified, PRC)
- Danish
- Dutch
- French
- German
- Hebrew
- Hungarian
- Japanese
- Norwegian
- Polish
- Portuguese (Brazil)

- Romanian
- Spanish
- Swedish

Additional language packs, when available, can be downloaded from the ArcPad website at <http://www.esri.com/arcpad>.

The goal of this installation guide is to lead you through the process of installing ArcPad, language packs, sample data, projection and datum transformation files, and the ArcPad Tools. For the purpose of clarity, personal computers running Windows 2000 or XP will be referred to as desktop PCs in this installation guide. This will help to avoid confusion when Windows Mobile (or Windows CE) devices and desktop PCs are mentioned in the same sentence. Similarly, in the interest of brevity, Windows Mobile and Windows CE will collectively be referred to as Windows Mobile.

Installing ArcPad is a four-step process:

1. Install Microsoft® ActiveSync® on your desktop PC if you intend to install ArcPad 7.0 on a Windows Mobile or Windows CE computer.
2. Run Setup.exe to install ArcPad and selected components on your desktop PC.
3. Establish an ActiveSync connection between your desktop PC and Windows Mobile computer.
4. Run the Windows Mobile install programs from your desktop PC to install ArcPad on your Windows Mobile device. The Windows Mobile install programs are accessed from your desktop PC by clicking Start > All Programs > ArcGIS > ArcPad 7.

ArcPad 7.0 requires an ArcPad registration number for continuous use. Without a registration number, ArcPad will operate in evaluation mode: all of ArcPad functionality will be active; however, ArcPad will automatically time out after 20 minutes of use. You can then start ArcPad again and evaluate it for another 20 minutes before ArcPad times out. Entering a valid ArcPad registration number disables the time-out. An ArcPad registration number is supplied when you purchase ArcPad 7.0.

ArcPad 5.x or 6.x registration numbers are *not* valid for ArcPad 7.0.

Installing ArcPad 7.0 on Windows 2000 or XP

Introduction

Installing ArcPad 7.0 on your desktop PC not only installs ArcPad 7.0 but also creates program group items for installing the ArcPad Windows Mobile application, language packs, sample data, projection and datum transformation files, and VBScript Runtime Library on the supported Windows Mobile devices. Hence, it is necessary to install at least the ArcPad Windows Mobile components on your desktop PC before you can install ArcPad 7.0 on your Windows Mobile device.

Before you install ArcPad, it is important that you first install Microsoft ActiveSync on your desktop PC if you intend to install ArcPad on a Windows Mobile computer.

System requirements

Your desktop PC is required to meet the minimum system requirements to install ArcPad 7.0. For the latest requirements, refer to the ArcPad Website at <http://www.esri.com/arcpad>.

Minimum system requirements

Processor	PC-Intel® 450 MHz (or higher)
Operating System	Microsoft Windows 2000 or XP
RAM	256 MB
Free Disk Space	ArcPad: Approximately 100 MB
ArcGIS Desktop	ArcView®, ArcEditor™, or ArcInfo® 9.0 or higher is required to use the ArcPad Tools for ArcGIS Desktop
Desktop Synchronization Software	Microsoft ActiveSync 3.8 (or higher) (if you intend to install ArcPad 7.0 on a Windows Mobile computer)
Microsoft XML (MSXML) Parser	MSXML 4.0 Service Pack 2

Preparing for installation

Installing Microsoft ActiveSync

The installation of ArcPad 7.0 on your desktop PC creates program group items for installing ArcPad 7.0 on Windows Mobile computers. Microsoft ActiveSync needs to be installed on your desktop PC for these program group items to be created correctly. You do not need to install Microsoft ActiveSync if you have no plans to install ArcPad 7.0 on Windows Mobile computers. However, you do need to first install Microsoft ActiveSync if you intend to also install ArcPad 7.0 on a Windows Mobile computer.

If you have not already installed ActiveSync, you can find it on the Microsoft ActiveSync CD-ROM supplied with your Windows Mobile computer, or download it from

<http://www.microsoft.com/windowsmobile/downloads/activesync38.msp>

Installing Microsoft XML parser

ArcPad 7.0 requires the MSXML 4.0 Service Pack 2 parser or higher. The MSXML 4.0 SP2 release is installed with Windows XP and Internet Explorer 6.0. If you have one of these products, you do not have to upgrade.

You can download MSXML 4.0 SP2 from

<http://www.microsoft.com/downloads/details.aspx?FamilyID=3144b72b-b4f2-46da-b4b6-c5d7485f2b42&DisplayLang=en>.

If this link does not work, then go to

<http://msdn.microsoft.com/downloads>

Search for MSXML parser to find the MSXML 4.0 SP2 download. Instructions for installing MSXML 4.0 SP2 are included in the download.

If you have an earlier version of ArcPad

It is not necessary to uninstall any previous version of ArcPad from your desktop PC, but it is highly recommended that you uninstall any previous versions of ArcPad from your Windows Mobile computer before installing ArcPad 7.0.

To uninstall ArcPad 6.0.3:

Click Start > Settings > Control Panel. Double-click the Add/Remove Programs icon. On the Install/Uninstall tab, select ESRI ArcPad 6.0.3 from the program list and click the Add/Remove button.

Installing ArcPad 7.0

The complete process for installing ArcPad 7.0 involves the following:

- Install Microsoft ActiveSync on your desktop PC if you intend to install ArcPad 7.0 on a Windows Mobile computer.
- Install ArcPad.

ArcPad can be installed from the ArcPad CD-ROM or from the ArcPad files downloaded from the ESRI ArcPad Web site. The installation process is identical; only the location of the files differs.

ArcPad CD-ROM contents

- Setup.exe—Installation program for ArcPad on Windows 2000, XP, Windows Mobile, and Windows CE. Setup.exe also includes PDF files of the ArcPad documentation: *Installing ArcPad 7.0* (ArcPad_InstallGuide.pdf), *Using ArcPad* (ArcPad_UserGuide.pdf), *ArcPad Reference Guide* (ArcPad_RefGuide.pdf), and the *ArcPad Quick Reference* guide (ArcPad_QuickRef.pdf).
- *Installing ArcPad 7.0* (ArcPad_InstallGuide.pdf).

Note: First install Microsoft ActiveSync on your desktop PC if you intend to install ArcPad 7.0 on a Windows Mobile computer.

To install ArcPad, follow these steps:

- Close all applications on your desktop PC.
- Insert the CD-ROM and follow the instructions on the screen.

If autorun has been disabled for your CD-ROM drive, use Windows Explorer to locate the Setup.exe file on your CD-ROM. Double-click Setup.exe to start the installation.

If you have downloaded the ArcPad files from the ArcPad website, use Windows Explorer to locate the Setup.exe file on your desktop PC. Double-click Setup.exe to start the installation.

- Follow the instructions on your screen. You can select the components you want to install or install all the components selected by default.

The installation program will:

- Create a \Program Files\ArcPad 7.0 folder on the C: drive of your desktop PC (you can change this default location during the installation). The installation will create the following subfolders:
 - Applets. This is an empty folder that ArcPad searches for applets to load on startup.
 - CABs. The Windows Mobile installation files are copied into this folder.
 - Coordinate Systems. The projection (.prj) files are copied into this folder.
 - Desktop Tools. The ArcPad Tools for ArcGIS Desktop are copied into this folder.
 - Extensions. This is an empty folder that ArcPad searches for extensions to load on startup.
 - Help. The documentation and language help files are copied into this folder.
 - Locales. The language Dynamic Link Library (.dll) files are copied into this folder.
 - Modules. The ArcPad module files are copied into this folder.
 - Samples. The ArcPad sample data is copied into this folder.
 - Styles. The ESRI Style file is copied into this folder.
 - System. The NADCON and HARN datum transformation tables are copied into this folder.
- Copy the esri_11.ttf, esri_30.ttf, esri_49.ttf, and esri_144.ttf fonts into the \Windows\Fonts folder if they do not already exist.
- Install the new ArcPad tools for ArcGIS Desktop. These tools are automatically installed on to the ArcPad toolbar in ArcMap™.

You can manually install the ArcPad tools if for some reason they are not automatically installed. The ArcPad Tools can be manually installed by running (double-clicking) the ArcPad7Tools.reg program (which, by default, is located under the \Program Files\ArcPad 7.0\Desktop Tools folder).

ArcPad 7.0 sample data (optional)

- You can install the ArcPad sample data with the Setup.exe installation program, as described above.

ArcPad 7.0 language packs

- The language packs included with ArcPad 7.0 are automatically installed on your desktop PC when installing ArcPad 7.0. A language can be selected in ArcPad from the Locale page of the ArcPad Options dialog box.

Note: To use a language pack with ArcPad, the locale and codeset must be supported on the device. The Locale page of the ArcPad Options only lists the locales that are supported on the device. Your device's operating system does not need to be localized for a particular language to use the language in ArcPad, but the operating system does need to support the language and codepage. For example, you can install the Chinese fonts, or codepages, on an English Windows XP desktop PC. Once you have done this, you can use the Chinese locale with ArcPad, even though the Windows XP operating system is still in English.

After running setup

The ArcPad installation creates the following program items under the Start > All Programs > ArcGIS > ArcPad 7 program group, depending on which components were selected during the setup:

- Language Packs for Windows Mobile
- ArcPad 7.0 for Windows
- ArcPad 7.0 Help
- ArcPad 7.0 Read Me
- ArcPad Install Guide
- ArcPad Quick Reference
- ArcPad User Guide
- Install ArcPad 7.0 Application for Windows Mobile

- Install ArcPad 7.0 Elmore Sample Data on Windows Mobile
- Install ArcPad 7.0 HARN tables on Windows Mobile
- Install ArcPad 7.0 NADCON tables on Windows Mobile
- Install ArcPad 7.0 Redlands Sample Data for Windows Mobile
- Install ArcPad 7.0 World Sample Data on Windows Mobile
- Install VBScript Runtime Library for Windows Mobile.

Entering your registration number

Entering a valid ArcPad registration number disables the evaluation mode time-out. To enter your registration number:

- Start ArcPad by clicking on Start > All Programs > ArcGIS > ArcPad 7 > ArcPad 7.0 for Windows.
- Type your registration number in the Registration dialog box and click OK.

ArcPad 5.x and 6.x registration numbers are *not* valid for ArcPad 7.0.

Uninstalling ArcPad 7.0

The ArcPad 7.0 components can be easily uninstalled if necessary.

Click Start > Settings > Control Panel. Double-click the Add/Remove Programs icon. On the Install/Uninstall tab, select ESRI ArcPad 7.0 from the program list and click the Add/Remove button.

Installing ArcPad 7.0 on Windows Mobile or Windows CE

Introduction

ArcPad 7.0 is designed to run on any Windows Mobile or Windows CE computer that meets the minimum system requirements listed below. ArcPad, similar to many Windows Mobile programs, is installed on your Windows Mobile computer by running the installation programs from your desktop PC. The ArcPad Windows Mobile installation programs are created when ArcPad is installed on the desktop PC. The ArcPad Windows Mobile installation program uses a Microsoft ActiveSync connection to install the appropriate programs for your Windows Mobile computer's processor.

System requirements

Your Windows Mobile computer is required to meet the minimum system requirements to install ArcPad 7.0. For the latest requirements, refer to the ArcPad website at <http://www.esri.com/arcpad>.

Minimum system requirements

Processor	ARM-based processors, including the following: Intel® (StrongARM®, XScale™) Samsung Texas Instruments (OMAP) Atmel
Operating System	Windows Mobile 2003 Windows Mobile 2003 Second Edition Windows Mobile 5.0 Windows CE 4.2

	Windows CE 5.0
Memory	64 MB RAM
Free storage space	Approximately 9 MB for installing ArcPad Approximately 2 MB for installing Elmore sample data Approximately 2 MB for installing Redlands sample data Approximately 6 MB for installing World sample data Approximately 400 KB for installing HARN tables Approximately 2 MB for installing NADCON tables Approximately 100 KB for installing each language pack
Desktop Synchronization	Microsoft ActiveSync 3.8 (or higher)

Recommended system requirements

Memory	64 MB (or more)
Free storage space	ArcPad and sample data: 20 MB
Desktop Synchronization Software	Microsoft ActiveSync 3.8

Preparing for installation

Installing Microsoft ActiveSync

The installation of ArcPad 7.0 requires a Microsoft ActiveSync connection between your desktop PC and your Windows Mobile computer. If you have not already installed Microsoft ActiveSync, you can find it on the Microsoft ActiveSync CD-ROM supplied with your Windows Mobile computer, or download Microsoft ActiveSync 3.8 from

<http://www.microsoft.com/windowsmobile/downloads/activesync38.msp>.

Once you have installed and started ActiveSync, ensure that you have a connection between your desktop PC and Windows Mobile computer before starting the ArcPad 7.0 installation.

If you have an earlier version of ArcPad

It is highly recommended that you uninstall any previous versions of ArcPad from your Windows Mobile computer before installing ArcPad 7.0. This includes the ESRI ArcPad Font.

To uninstall ArcPad 6.0.3:

Tap Start > Settings > System > Remove Programs. (On some Windows CE computers, Remove Programs is accessed via Settings > Control Panel > Remove Programs.) On the Uninstall tab, select ESRI ArcPad 6.0.3, ESRI ArcPad Font, or ESRI ArcPad 6.0.3 Sample Data from the program list and click the Remove button.

There are issues with uninstalling or overwriting fonts on Windows Mobile computers. It is recommended that you remove the ESRI ArcPad font manually by using Windows Explorer on your desktop PC to navigate to the \Windows\Fonts folder on your connected Windows Mobile computer, and then use the standard file delete method in Windows Explorer to remove the file esri_30.ttf.

If you do not first remove the ESRI ArcPad font from your Windows Mobile computer and attempt to overwrite it by installing ArcPad 7.0 on your Windows Mobile computer, the following error message may be reported:

File In Use

A soft reset of your Windows Mobile computer normally solves this problem.

Installing ArcPad 7.0

The complete process for installing ArcPad 7.0 on Windows Mobile involves the following:

1. Install ArcPad 7.0 on your desktop PC.
2. Install the ArcPad 7.0 Application on your Windows Mobile computer.
3. Install the Elmore, Redlands, or World ArcPad sample data on your Windows Mobile computer (optional).
4. Install the HARN datum transformation tables on your Windows Mobile computer (optional).
5. Install the NADCON datum transformation tables on your Windows Mobile computer (optional).
6. Install one or more language packs on your Windows Mobile computer (optional).
7. Install the VBScript Runtime Library on your Windows Mobile computer (not needed for most Windows Mobile devices).

Note: When installing ArcPad 7.0 for Windows Mobile, the VBScript Runtime Library will automatically be installed on devices that do not already have the library preinstalled in ROM. Therefore, it is usually not necessary to install the VBScript Runtime Library via the Install VBScript Runtime Library for Windows Mobile shortcut.

To install ArcPad, follow these steps:

- Close all applications on your Windows Mobile computer.
- Start a Microsoft ActiveSync connection between your desktop PC and Windows Mobile computer.
- On your desktop PC, click Start > All Programs > ArcGIS > ArcPad 7 > Install ArcPad 7.0 Application for Windows Mobile. Follow the instructions on your screen.

Note: When installing ArcPad 7.0—or any of the ArcPad components—to a Windows Mobile or Windows CE device, you will be prompted to select the destination media or location for the installation.

On devices running Windows Mobile 2003, Windows Mobile 2003 Second Edition, or Windows CE 4.2, a dialog box on your desktop PC will prompt to Select the Destination Media on your device. Options to select from will include Main Memory, built-in storage, CF Card, or SD Card.

On devices running Windows Mobile 5.0, or Windows CE 5.0, the dialog box on your desktop PC will be unavailable and instead you will be prompted on your device to choose a location for the installation. Options to select from will include the device or storage card(s).

Main Memory refers to the RAM on the device. Although RAM provides the fastest performance, at Windows Mobile 5.0 it is no longer possible to install into RAM. Applications and data installed into Main Memory are deleted when the device loses power.

There are numerous terms used for built-in storage, including Device, iPAQ File Store, Disk, MyDevice, and Built-In Storage. All of these terms refer to nonvolatile memory built into the device. Not all devices have built-in storage, but all Windows Mobile 5.0 devices do. It is recommended that you install ArcPad into the built-in storage. Installing ArcPad on a storage card often results in slower startup times for ArcPad. Furthermore, applications installed on storage cards are typically first loaded into memory before being run, which reduces the amount of free memory for running applications.

Storage cards include removable CompactFlash or SecureDigital storage cards. It is recommended that you install data onto storage cards. For optimum performance, it is recommended that you purchase and use storage cards that have the fastest read and write access times available.

The installation programs will:

- Create a \Program Files\ArcPad folder on your Windows Mobile computer—and on the selected destination location—and copy ArcPad.exe into this folder.
- Copy the esri_11.ttf, esri_30.ttf, esri_49.ttf, and esri_144.ttf fonts into the \Windows\Fonts folder.

ArcPad 7.0 sample data (optional)

You can install the ArcPad sample data with the installation programs created on your desktop PC.

- On your desktop PC, click Start > All Programs > ArcGIS > ArcPad 7 > Install ArcPad 7.0 Elmore Sample Data for Windows Mobile. Follow the instructions on your screen. The installation will create an Elmore folder on your Windows Mobile device, under the selected destination media, and copy the Elmore sample data into this folder.
- On your desktop PC, click Start > All Programs > ArcGIS > ArcPad 7 > Install ArcPad 7.0 Redlands Sample Data for Windows Mobile. Follow the instructions on your screen. The installation will create a Redlands folder on your Windows Mobile device, under the selected destination media, and copy the Redlands sample data into this folder.
- On your desktop PC, click Start > All Programs > ArcGIS > ArcPad 7 > Install ArcPad 7.0 World Sample Data for Windows Mobile. Follow the instructions on your screen. The installation will create a World folder on your Windows Mobile device, under the selected destination media, and copy the World sample data into this folder.

ArcPad 7.0 language packs (optional)

You can install one or more language packs with the installation program created on your desktop PC.

- On your desktop PC, click Start > All Programs > ArcGIS > ArcPad 7 > Language Packs for Windows Mobile. Click the language pack that you want to install on your Windows Mobile device.

Once a language pack has been installed on your Windows Mobile device, it can be selected from the Locale page of the ArcPad Options dialog box.

Note: To use a language pack with ArcPad, the locale and codeset must be supported on the device. The Locale page of the ArcPad Options only lists the locales that are supported on the device. Your device's operating system does not need to be localized for a particular language to use the language in ArcPad, but the operating system does need to support the language and codepage. For example, you can install the Chinese fonts, or codepages, on an English Windows XP PC. Once you have done this, you can use the Chinese locale with ArcPad, even though the Windows XP operating system is still in English.

VBScript Runtime Library for Windows Mobile (optional)

ArcPad 7.0 customization using VBScript requires that the VBScript Runtime Library be installed on the computer. The VBScript Runtime Library consists of the VBScript.dll file, which is located in the Windows folder. Most Windows Mobile computers do not have the VBScript Runtime Library installed. The ArcPad Setup.exe file includes the VBScript Runtime Library for all Windows Mobile computers supported by ArcPad.

You only need to install the VBScript Runtime Library for Windows Mobile if you get the following warning message when starting ArcPad on your Windows Mobile computer:

VBScript script engine not supported on this system.

You may also get the following error message when trying to start ArcPad with custom applets and forms:

Fatal Application Error

You can install the VBScript Runtime Library for Windows Mobile with the installation program created on your desktop PC.

- On your desktop PC, click Start > All Programs > ArcGIS > ArcPad 7 > Install VBScript Runtime Library on Windows Mobile. Follow the instructions on your screen.

Note: When installing ArcPad 7.0 for Windows Mobile, the VBScript Runtime Library will automatically be installed on devices that do not already have the library preinstalled in ROM. Therefore, it is usually not necessary to install the VBScript Runtime Library via the Install VBScript Runtime Library for Windows Mobile shortcut.

After running setup

The ArcPad installation creates an ArcPad 7.0 program item under Start > Programs.

Entering your registration number

Entering a valid ArcPad registration number disables the evaluation mode time-out. To enter your registration number

- Start ArcPad by clicking Start > Programs > ArcPad 7.0.
- Type your registration number in the Registration dialog box and tap OK.

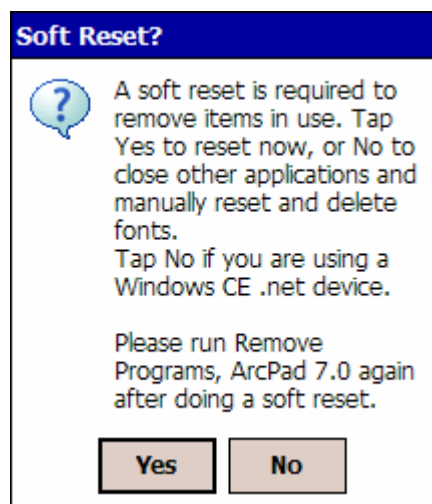
ArcPad 5.x or 6.x registration numbers are *not* valid for ArcPad 7.0.

Uninstalling ArcPad 7.0

Uninstalling on Windows Mobile

There are issues with uninstalling fonts on Windows Mobile computers. Consequently, uninstalling ArcPad 7.0 on Windows Mobile requires a two-pass uninstall.

Click Start > Settings > System > Remove Programs. On the Uninstall tab, select ESRI ArcPad 7.0 from the program list and click the Remove button. The following message box will appear after a few seconds



Tap Yes.

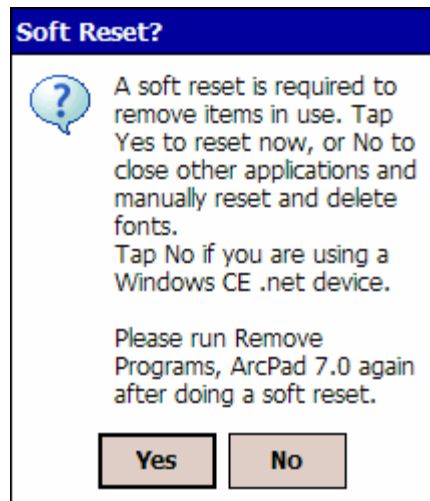
Your Windows Mobile computer will automatically be reset (rebooted). You now need to run Remove Programs, ESRI ArcPad 7.0 again to complete uninstalling ArcPad 7.0.

Uninstalling on Windows CE

There are issues with uninstalling fonts on Windows CE computers. Consequently, uninstalling ArcPad 7.0 on Windows CE requires a two-pass uninstall. Before uninstalling ArcPad 7.0, you must remove the ESRI font files manually by using Windows Explorer on your desktop PC to navigate to the \Windows\Fonts folder on your connected Windows CE computer, and then use the standard file delete method in Windows Explorer to remove the esri_11.ttf, esri_30.ttf, esri_49.ttf, and esri_144.ttf font files. If you do not first remove the ESRI font files from your Windows CE computer and attempt to uninstall ArcPad 7.0, the following error message may be reported:

File In Use

To uninstall ArcPad 7.0 on Windows CE devices, tap Start > Settings > Control Panel > Remove Programs. On the Uninstall tab, select ESRI ArcPad 7.0 from the program list and click the Remove button. The following message box will appear after a few seconds



Tap No.

You now need to run Remove Programs, ESRI ArcPad 7.0 again to complete uninstalling ArcPad 7.0.

Uninstalling the ArcPad 7.0 components

The ArcPad 7.0 components can be easily uninstalled if necessary.

Click Start > Settings > System > Remove Programs. (On some Windows CE computers, Remove Programs is accessed via Settings > Control Panel > Remove Programs.) On the Uninstall tab, select ESRI Elmore Sample Data, ESRI Redlands Sample Data, ESRI World Sample Data, ESRI ArcPad 7.0 NADCON Tables, ESRI ArcPad 7.0 HARN Tables, or ESRI ArcPad 7.0 Language Pack from the program list and click the Remove button.

Troubleshooting your installation

Installing on Windows Mobile

Microsoft ActiveSync needs to be installed on your desktop PC before installing ArcPad 7.0 for the Windows Mobile installation program group items to be created correctly. If My Computer Windows Explorer opens when you click Start > All Programs > ArcGIS > ArcPad 7 > Install ArcPad 7.0 Application for Windows Mobile, it is because Microsoft ActiveSync was not installed on your desktop PC when you installed ArcPad 7.0.

To correct this:

1. Uninstall ArcPad by using Add/Remove Programs from the Control Panel.
2. Install Microsoft ActiveSync.
3. Reinstall ArcPad 7.0 on your desktop PC.

“Unknown Publisher” message when installing on Windows Mobile 5.0 Phone Edition

When installing ArcPad—or any of the ArcPad components—to a Windows Mobile 5.0 Phone Edition device, you may see the following warning message on your device:

The program is from an unknown publisher. You should install it only if you trust its publisher. Do you want to continue?

You can safely ignore this warning message and tap Yes to continue with the installation.

An error message occurs when installing ArcPad 7.0

The following error message may occur:

File in Use

There are two reasons why you may see this error message:

1. If you attempt to install ArcPad 7.0 and the ESRI fonts included with the ArcPad 7.0 installation are already installed on your Windows Mobile computer.
2. When attempting to uninstall ArcPad 7.0 and the included ESRI fonts from your Windows Mobile computer.

To correct this

1. Remove the ESRI fonts manually by using Windows Explorer on your desktop PC to navigate to the \Windows\Fonts folder on your connected Windows Mobile computer, and use the standard file delete method in Windows Explorer to remove the esri_11.ttf, esri_30.ttf, esri_49.ttf, and esri_144.ttf fonts.
2. Do a soft reset (reboot) of your Windows Mobile computer.
3. Remove the ESRI ArcPad Font from your Windows Mobile computer. Click Start > Settings > Remove Programs. (On some Windows CE computers, Remove Programs is accessed via Settings > Control Panel > Remove Programs.) On the Uninstall tab, select ESRI ArcPad Font from the program list and click the Remove button.

Installing on Windows CE .net devices

You may get the following error messages when starting ArcPad on Windows CE .net devices, even though the VBScript Runtime Library is installed on the device:

VBScript script engine not supported on this system.

or

Fatal Application Error

Installing the VBScript Runtime Library included with ArcPad 7.0 usually solves this problem. However, be aware that the VBScript Runtime Library included with ArcPad 7.0 is an older version than the VBScript Runtime Library installed on Windows CE .net devices—installing an older VBScript Runtime Library may cause problems with other applications that require the newer VBScript Runtime Library.

Valid registration number is not accepted on Windows Mobile or Windows CE

When a valid registration number is entered in the Registration dialog box the OK button is enabled, indicating that the registration number is valid. In order for a valid registration number to be accepted, ArcPad also requires that valid owner information exists for the Windows Mobile or Windows CE device. The owner information is entered in the Owner settings on Start > Settings.

