

# Creating a spyglass story map

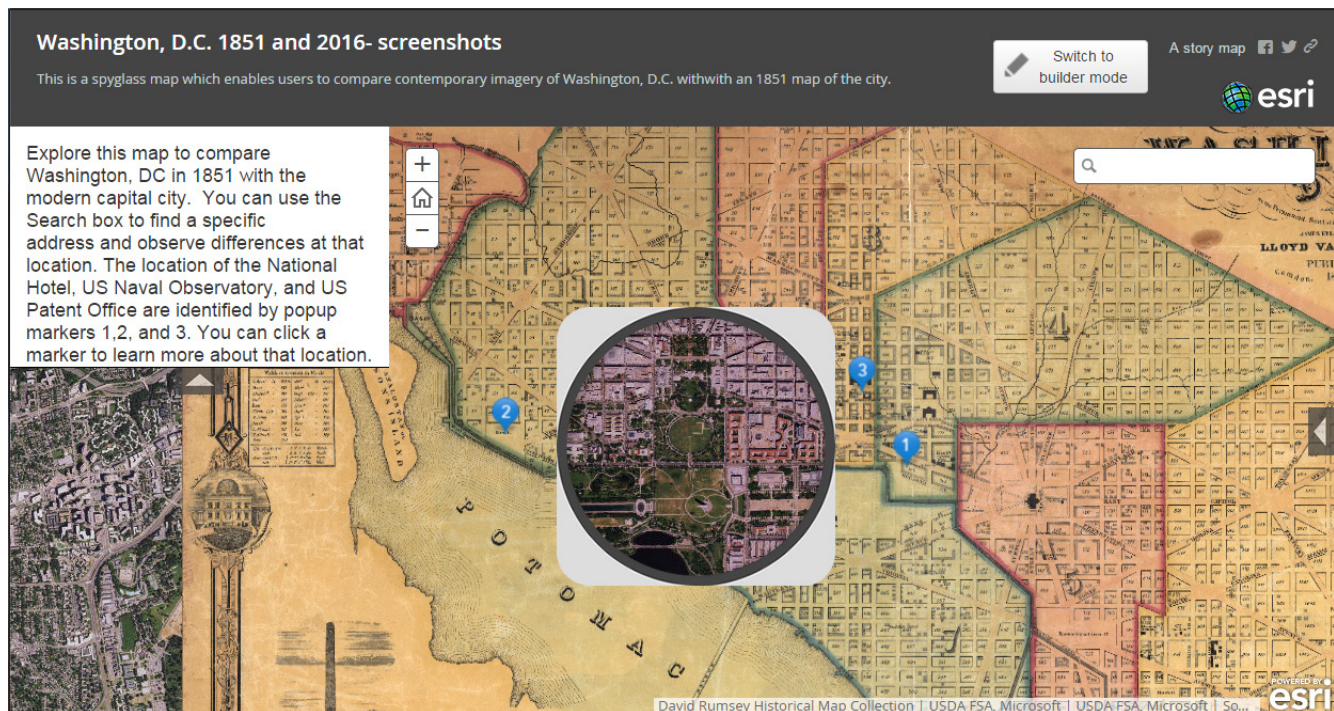
Story maps provide several ways to compare maps from different dates. The Story Map Swipe and Spyglass<sup>SM</sup> apps are two of these, enabling users to interact with two web maps simultaneously in a single scalable view. In this lesson, you will create a spyglass story map to compare Washington, DC, in 1851 with imagery of the modern capital city. You will add Map Notes to the map to show the three locations for scenes in a play.

## Build skills in these areas

- ▶ Opening a map
- ▶ Adding map notes to the map
- ▶ Creating a story map spyglass web app

## What you need

- ▶ An organizational account in ArcGIS Online
- ▶ Estimated time: 1 hour



## Scenario

This fictitious scenario will provide you with practice creating your spyglass story map.

A new play, set in 1851 Washington, DC, is scheduled to open in that city in six months. The theater owner wants to attract attention to the play and enhance theatergoers' experiences by providing a way for them to relate the city they know to the city that is the setting for the play. They have hired your data visualization company to produce a web map that facilitates easy comparison between the 1851 city and its current configuration, shows key locations in the city that are portrayed in the play's three scenes (National Hotel, Naval Observatory, US Patent Office), and enables users to search for specific addresses.

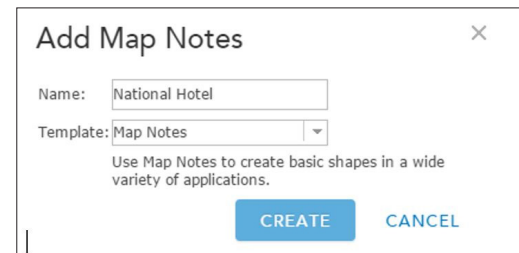
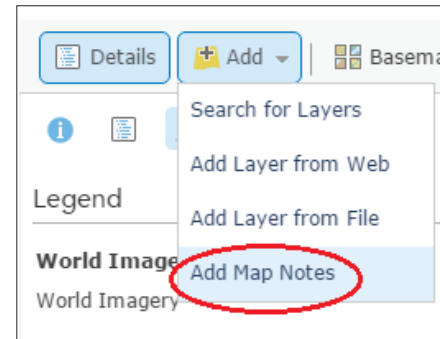
## Open the map

1. Sign in to your ArcGIS organizational account.
2. Open [Washington, D.C. 1851 and 2016](#).
3. Use Save as to save it to your own account as Washington D.C. 1851 and 2016 and **replace the word Copy with your initials** (e.g., Washington DC 1851 and 2016–LM). **Delete all the tags and enter your individual tags.**
4. Click the Contents tab to see the map's layers. If you turn off the World Imagery layer, you will see the 1851 map beneath it.

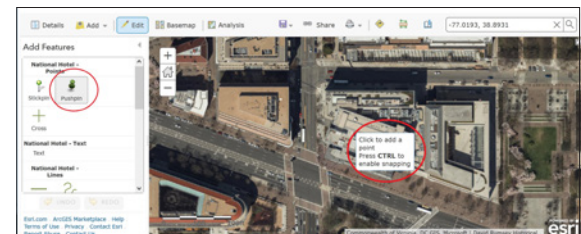
## Add map notes

1. Follow the steps below to create three map notes to show the locations of the National Hotel, Naval Observatory, and US Patent Office in 1851. The steps are the same for each note, but the information about each location will differ. Use the table that follows to fill in the information for each note.


- a. Enter **–77.0193, 38.8931** in the search box above the map and click Enter.
- b. Choose Add Map Notes (under Add).
- c. Name the map note **National Hotel** and click Create. Click on the map note in the map and choose Edit to do this.

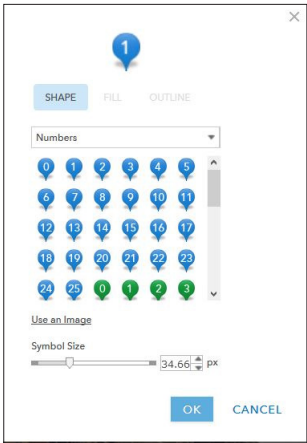
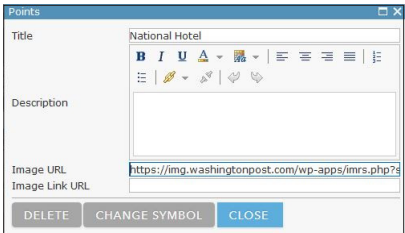


- d. Click the Pushpin tool and click the map at the location identified in step a. Explore symbols and choose an appropriate one for a national landmark.

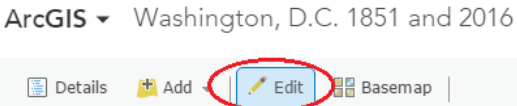


e. Use the information in the following table to fill in the map note information options:

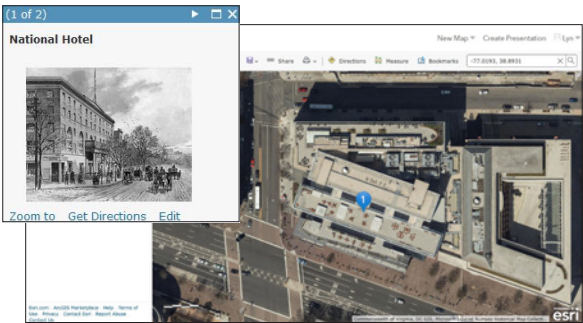
Location	-77.0193, 38.8931
Title	National Hotel
Description	[none]
URL to an image	<a href="https://img.washingtonpost.com/wp-apps/imrs.php?src=https://img.washingtonpost.com/blogs/local/files/2014/10/Pennsylvania-Posh.jpg&amp;w=1484">https://img.washingtonpost.com/wp-apps/imrs.php?src=https://img.washingtonpost.com/blogs/local/files/2014/10/Pennsylvania-Posh.jpg&amp;w=1484</a>
Image Link	[none]
Change symbol	Numeral 1,  (accept the default symbol size)



f. When you have completed filling in the information, click Close and then click Edit.





Your map should now look like the following. You can click on the map note to see a historic image of the National Hotel.



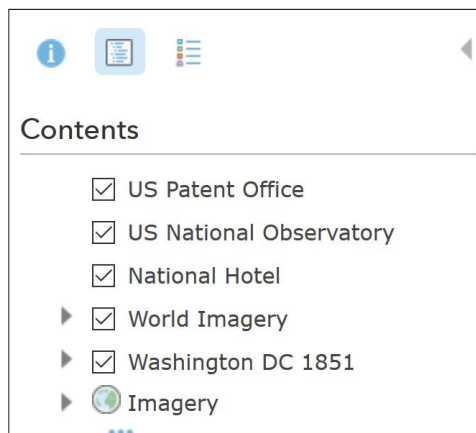
g. Create two more map notes in the same way using information in the tables below.

Note: Use the coordinates next to Location to create each new map note.

Location	-77.05145, 38.8951
Title	US Naval Observatory
Description	[none]
URL to an image	<a href="http://earlyradiohistory.us/1905tim1.jpg">http://earlyradiohistory.us/1905tim1.jpg</a>
Image Link	[none]
Change symbol	Numerical 2, 

Location	-77.0297, 38.8971
Title	US Patent Office
Description	[none]
URL to an image	https://www.census.gov/history/img/PatentOffice.jpg
Image Link	[none]
Change symbol	Numeral 3, 

When you have finished, you will see the three map notes listed in your map Contents.

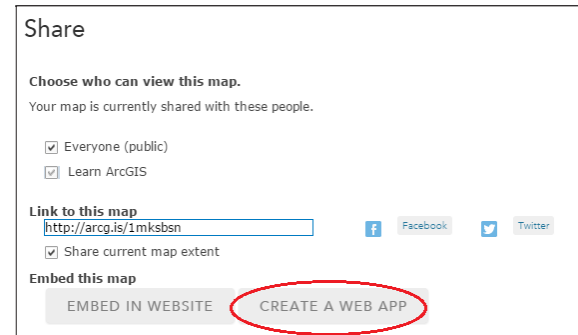


Zoom your map to an extent like the following (you just see the three map notes), then save the map.

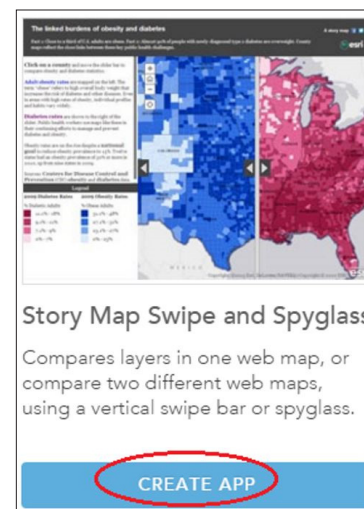


## Create a story map spyglass web app

1. To create your story map, click Share (above the map) then click Create a Web App under Embed this map.



2. Click Build a Story Map.
3. Select Story Map Swipe and Spyglass, then Create Web App.





4. Fill in the New App information box as follows, then click Done.

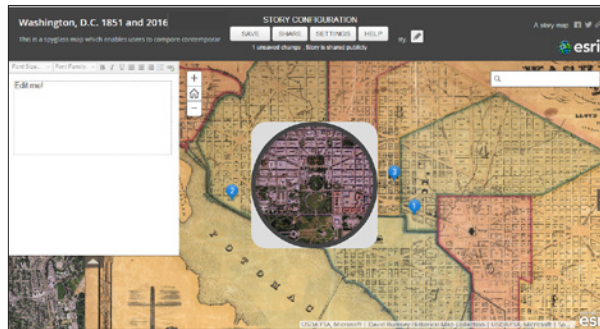
5. Click Select this layout under Spyglass, then click Next.

6. In the next window of the Swipe/Spyglass Builder, use the drop-down list to select World Imagery as the layer to appear within the spyglass, then click Next.

7. Select the following layout settings (enable description, pop-up, and address search tool), then click Next.
8. Uncheck enabled legend.

9. Enter the following headers on the next Swipe/Spyglass Builder window:
- Main Map Header Title: **Washington, DC 1851.**
- Spyglass Header title: **Washington, DC Today.**
10. Click Open the app.

11. Your app preview looks like this image:



### Configure your story map swipe web app

1. Enter the following text in the Edit me! Box:  
**Explore this map to compare Washington, DC in 1851 with the modern capital city. You can use the Search box to find a specific address and observe differences at that location. The location of the National Hotel, US Naval Observatory, and US Patent Office are identified by pop-up markers 1, 2, and 3. You can click a marker to learn more about that location.**
2. You can experiment with different font sizes and families.
3. Before you save, you can edit the app's Title and Subtitle as well.

4. When you are satisfied with the changes you've made, click Save under Story Configuration.

5. If you go to My Content and open the saved app from there, it looks like this:



6. Click on one of the pop-up icons to see the pop-up appear on the side of the map.
7. Search for a modern street address in the search box.

Move the spyglass around on the map and zoom in for a closer view.

### Extended activity

Create a spyglass map to compare two historic maps or imagery from two different dates.