



ArcLogistics™ Route

A Complete Routing and Scheduling Solution

ArcLogistics™ Route

A Complete Routing and Scheduling Solution

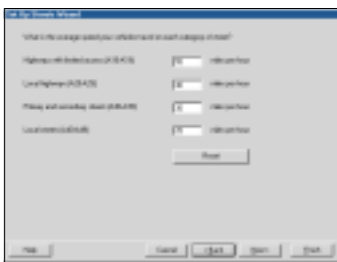


Routing and scheduling your vehicles is a necessary yet time-consuming task vital to your day-to-day operation. With the technological advances today you know there must be a better and easier way to do it, but you are too busy running your business to look for a solution. Think you cannot afford to take time to implement a solution? With ArcLogistics™ Route you can't afford not to!

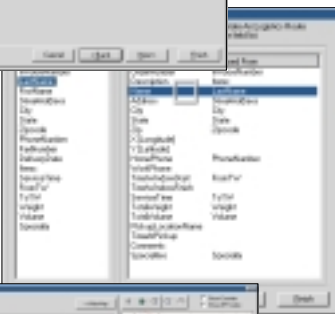
By making your operation more efficient, ArcLogistics Route reduces the cost of labor and vehicle expenses and enables you to expand your business using the same resources you have today. You can also improve your customer service and driver accountability.

How Does ArcLogistics Route Work?

While powered by the latest in state-of-the-art technology, ArcLogistics Route is very intuitive and easy to use. ArcLogistics Route



Prompts you to specify vehicle speeds over your street network.



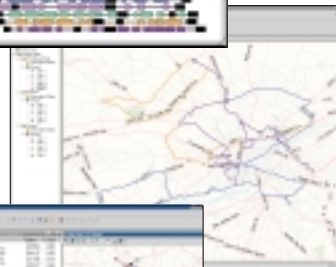
Lets you electronically import customer orders from any Open Database Connectivity-compliant database.



Automatically finds and plots addresses.



Takes into account the specialty of vehicles and drivers.



Builds routes based on actual network drive time, not straight-line distances.



Outputs dispatcher summary reports, route overview maps, street-level directions, driver manifests, and more.

ArcLogistics

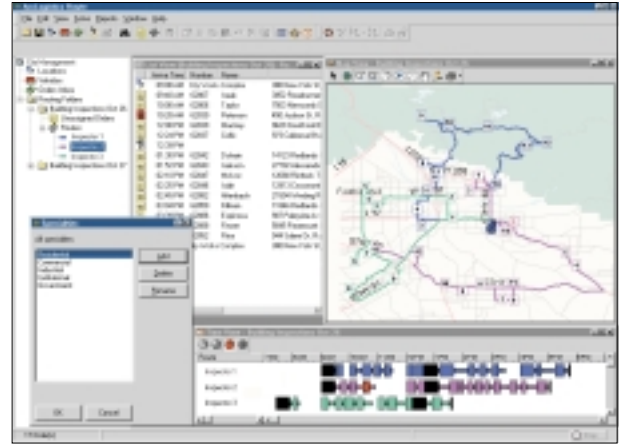
Is ArcLogistics Route for You?

If you need to find locations, assign stops to vehicles, and sequence stops considering factors such as time, cost, capacity, and productivity, then ArcLogistics Route can save you time and money. Here are some examples of markets where ArcLogistics Route can greatly impact efficiency and profitability.

State and Local Governments

Increasingly, state and local governments are required to cut their expenses and improve their customer service while adhering to complex political or regulatory requirements. ArcLogistics Route is of particular interest to managers in public works, code enforcement, building and safety, fleet management, and public facilities because it allows them to

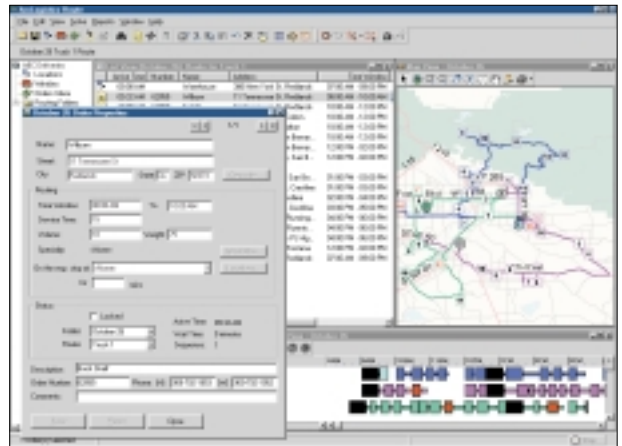
- Meet the challenges of limited resources.
- Improve government services in a community through efficient routing.
- Promptly respond to work orders, inspection requests, and code enforcement demands.
- Dispatch crews and inspectors efficiently.
- Increase the number of stops.



Vehicle Fleets for Service, Delivery, Cargo—Commercial and Residential

From small fleets of five or fewer vehicles to large fleets of hundreds of vehicles, ArcLogistics Route provides desktop decision support at your fingertips. Should your business needs involve static routing, route planning, or dynamic routing, ArcLogistics Route significantly reduces your daily cost of operation while maximizing on-time service. By using *real*/street/highway distances via roads actually traversed and *not* crow-fly estimates, you can

- Enable just-in-time scheduling.
- Maximize replenishment efficiency.
- Reduce product cycle time.
- Improve on-time performance.
- Minimize overtime.
- Improve driver accountability.

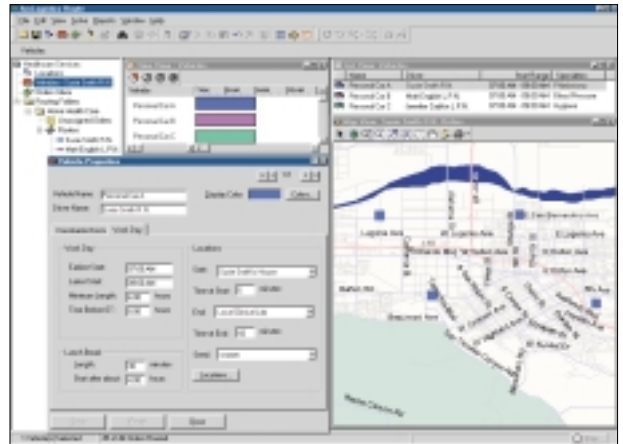


Route

Health and Human Services

Health and human services use ArcLogistics Route to schedule services delivered in the patient's home in a much more efficient manner. ArcLogistics Route analyzes transportation factors and street patterns and recommends the most efficient route to and between each patient's home. As an organization using ArcLogistics Route, you will be empowered to

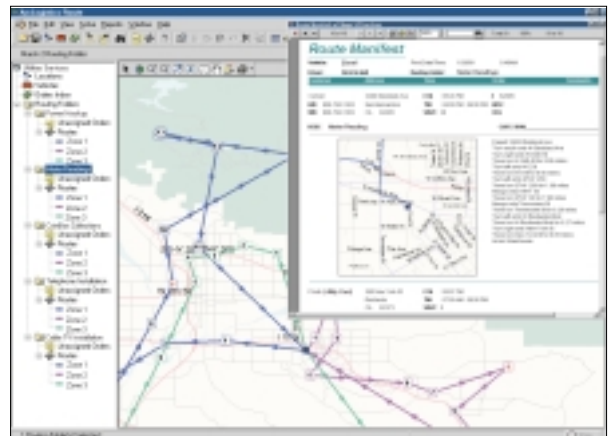
- Allow professionals (home health workers, caseworkers, and health inspectors) to spend more time on-site and less time on the road.
- Get the right health professional to the right site or to a homebound patient efficiently.
- Reduce costs related to time and miles traveled between visits.
- Deliver in-home medical services on time every time.
- Increase the number of patients/facilities your professionals visit each day.



Utilities and Telecommunications

Private and public utility and telecommunication companies are under continuing pressure to reduce operating costs while maintaining or even expanding their existing levels of infrastructure construction, maintenance, and service. ArcLogistics Route can help you

- Enhance work flow through efficient and economic crew dispatch.
- Keep your competitive edge in a deregulation environment.
- Easily modify your schedule to add new stops or respond to emergency calls.
- Improve customer service through more accurate scheduling.
- Minimize windshield time.
- Maximize the number of service calls your technicians make each day.
- Assign calls based on skill codes.



Other Markets that Can Benefit from ArcLogistics Route

- Beverage
- Food
- Insurance
- Manufacturing
- Petroleum
- Retail
- Transportation
- Vending
- Waste Management
- Water/Wastewater



Everything You Need Is Included

- ArcLogistics Route Software
- U.S. Street Database
- User Guide and Online Help
- One-Year Technical Support

Availability

ArcLogistics Route is available for Windows 95, 98, 2000, and Windows NT 4.0 operating systems. An Intel Pentium processor and 128 MB RAM are recommended.



ArcLogistics Route contains quality components from these fine companies.

About ESRI

ESRI, the world leader in the ever-expanding field of geographic information system (GIS) technology, has 100,000 client sites worldwide. ESRI's reputation is built on decades of experience helping businesses and organizations solve real-world problems using geographic information and state-of-the-art technology. ESRI continually strives to improve its software and services. ESRI's software is significantly more advanced than competitive products in both functionality and quality. Substantial software enhancements, new product features, innovative training courses, and continual application development services make ESRI your best choice for GIS today and tomorrow.

“With ArcLogistics Route, ESRI is continuing a tradition of providing our clients with the right tools to help them increase productivity and improve customer satisfaction.”

Jack Dangermond
ESRI President

Route



For more than 30 years ESRI has been helping people manage and analyze geographic information. ESRI offers a framework for implementing GIS in any organization with a seamless link from personal GIS on the desktop to enterprisewide GIS client/server and data management systems. ESRI® GIS solutions are flexible and can be customized to meet the needs of our users. ESRI is a full-service GIS company, ready to help you begin, grow, and build success with GIS.

Corporate

ESRI
380 New York Street
Redlands, California
92373-8100, USA
Telephone: 909-793-2853
Fax: 909-793-5953

For more information
call ESRI or your local reseller at

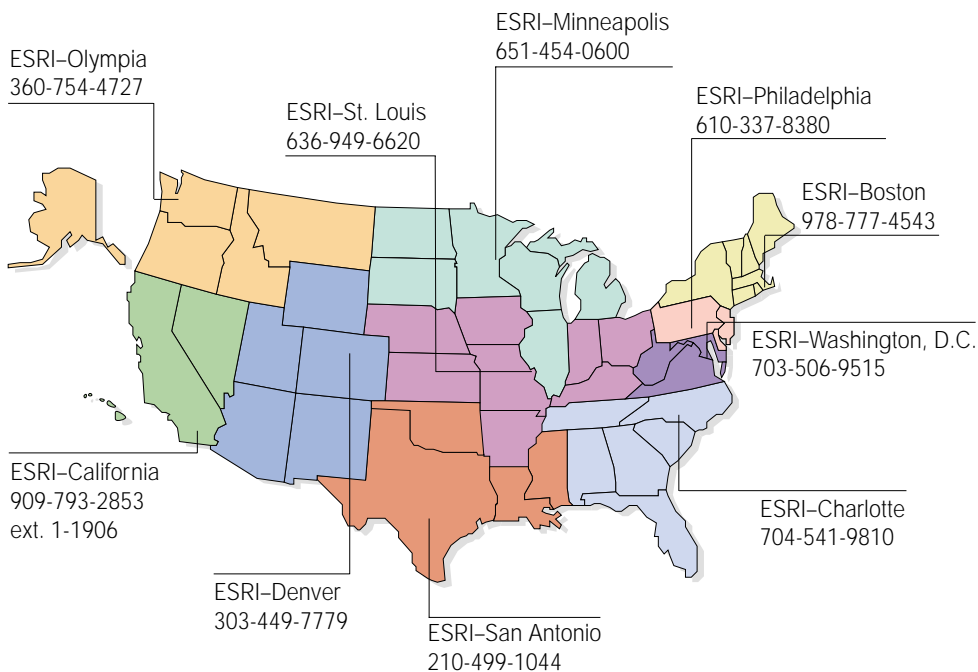
1-800-447-9778
(1-800-GIS-XPRT)

Send e-mail inquiries to
info@esri.com

Visit ESRI's Web page at
www.esri.com

Outside the United States,
contact your local ESRI distributor.
For the number of your distributor,
call ESRI at 909-793-2853,
ext. 1-1235,
or visit our Web site at
www.esri.com/international

Regional Offices



International Offices

| | | | |
|---|---|-------------------------------|-----------------------------------|
| Australia 61-89-242-1005 | Hong Kong 852-2730-6883 | Korea 82-2-571-3161 | Spain 34-91-559-4375 |
| Belgium/Luxembourg 32-2-460-7480 | Hungary 361-428-8040 | Netherlands 31-10-217-0700 | Sweden 46-23-755-400 |
| Canada 416-441-6035 | India 91-11-620-3802 | Poland 48-22-825-9836 | Thailand 66-2-678-0707 |
| France 33-1-46-23-6060 | Indonesia/Malaysia 62-21-570-7685 603-7874-9930 | Romania 40-1-231-13-81 | United Kingdom 44-1296-745-500 |
| Germany and Switzerland 49-8166-677-0 41-1-360-2460 | Italy 39-06-406-96-1 | Singapore 65-742-8622 | Venezuela 58-2-285-1134 |

Place ESRI business partner or distributor address here.

Copyright © 2000 Environmental Systems Research Institute, Inc. All rights reserved. ESRI and the ESRI globe logo are trademarks of Environmental Systems Research Institute, Inc., registered in the United States and certain other countries; registration is pending in the European Community. ArcLogistics and the ArcLogistics Route logo are trademarks and esri.com and www.esri.com are service marks of Environmental Systems Research Institute, Inc. Other companies and products mentioned herein are trademarks or registered trademarks of their respective trademark owners.

