

ArcGIS®



ArcGIS

The Complete Geographic Information System

ESRI® ArcGIS® is a family of software products that forms a complete geographic information system (GIS) built on industry standards that provide exceptional, yet easy-to-use, capabilities out of the box. ArcReader™, ArcView®, ArcEditor™, and ArcInfo™ are a scalable suite of desktop software products for geographic data creation, integration, and analysis. ArcIMS® provides data and application services via the Internet. ArcSDE® is an application server that facilitates storing and managing spatial data in a database management system (DBMS). And ArcPad® is a mobile technology that extends GIS to the field.

Key Advantages of ArcGIS

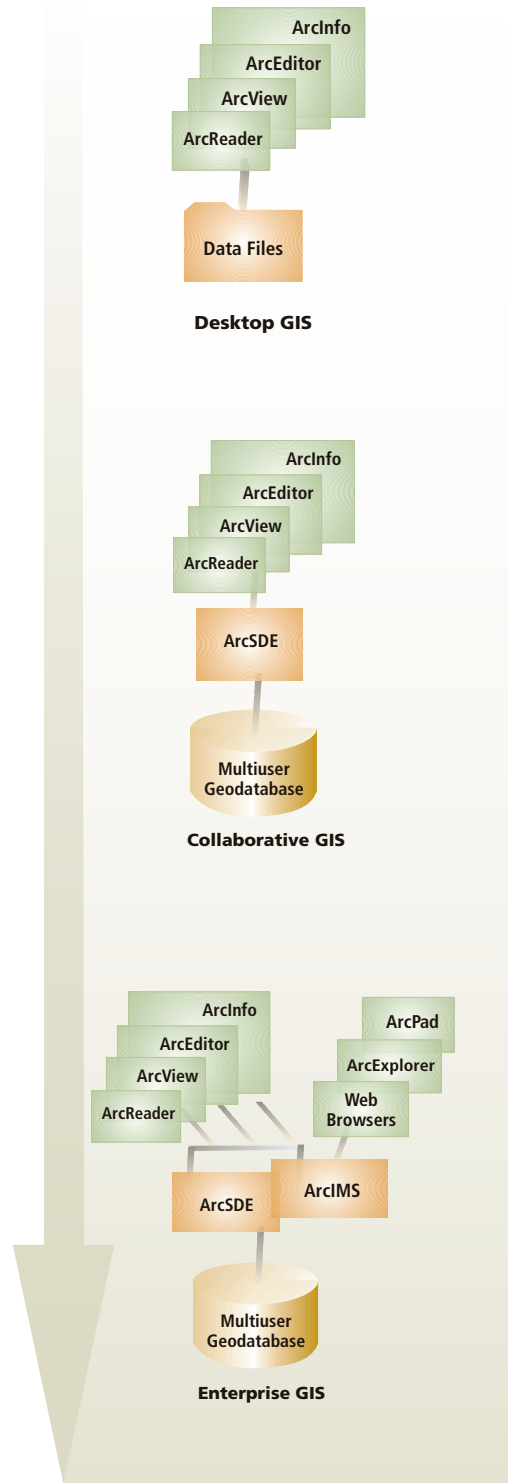
- Easy to use
- Exceptional functionality
- Scalable
- Web enabled
- Developer friendly

The ArcGIS products leverage standards in the areas of application development, information technology (IT), data access, Web services, and network protocols in order to meet a user's needs for interoperability. ArcGIS uses the following standard IT components: Visual Basic® for Applications (VBA) for customization; commercial DBMS for data storage; and XML, SOAP, TCP/IP, and HTTP for networked environments.

One of the results of this architecture is that you can conceive of and use ArcGIS as an interoperable information system. This means closely integrated data management including an unparalleled collaborative environment for multiuser editing and updating. And you can deploy GIS applications within your organization or across the Internet for many others to use for analysis, visualization, and decision making.

"My favorite features of ArcGIS are easier and more powerful feature editing, improved cartography, and the capability to use industry-standard programming environments."

Nick Seigal
Project Analyst
Criterion Planners/Engineers



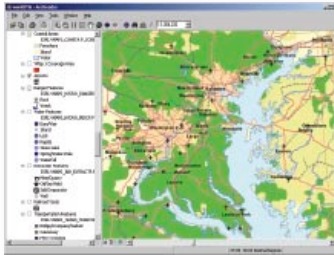
ArcGIS is a scalable system that can be deployed in every organization at an individual level or to a globally distributed network of people.

ArcGIS Desktop Products

The term ArcGIS Desktop refers to ArcReader, ArcView, ArcEditor, and ArcInfo, a set of scalable software products. Although licensed separately, ArcView, ArcEditor, and ArcInfo share the same core applications, user interface, and development environment. Additional functionality is enabled in each product as you move from ArcReader to ArcView to ArcEditor to ArcInfo. This dramatically increases usability and interoperability while retaining flexible end user deployments.

ArcReader

ArcReader is a free, easy-to-use product that allows anyone to view, explore, and print published map files (PMFs). ArcReader was designed for viewing and sharing maps that access a wide variety of dynamic geographic data. Anyone with ArcReader can now access high-quality maps created by ArcGIS Desktop.



Key Features of ArcGIS Desktop

ArcReader

- View ArcGIS maps.
- Print ArcGIS maps.
- Zoom and pan.
- Identify (multilayer).
- Find, measure, and hyperlink.

ArcView

ArcView is the world's most popular desktop mapping and GIS software. ArcView includes all the functionality of ArcReader and provides geographic data visualization, query, analysis, and integration capabilities along with the ability to create and edit geographic data.



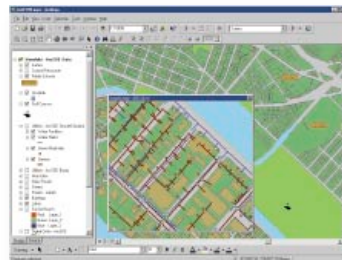
ArcView

ArcReader plus

- Data access
- Mapping
- Customization
- Spatial query
- Simple feature editing

ArcEditor

ArcEditor includes all the functionality of ArcView and adds the power to create and edit data in a geodatabase. Additional functionality includes support for multiuser editing, versioning, feature-linked annotation, and advanced topologic editing.



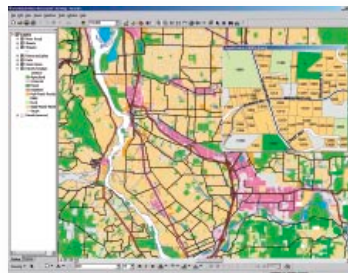
ArcEditor

ArcView plus

- Multiuser editing
- Rules-based topology
- Advanced editing

ArcInfo

ArcInfo is the complete GIS data creation, update, query, mapping, and analysis system. Within the ArcGIS software family, ArcInfo is the top of the line. It includes all the functionality of ArcEditor and adds the advanced geoprocessing capabilities that make ArcInfo the de facto standard for GIS.



ArcInfo

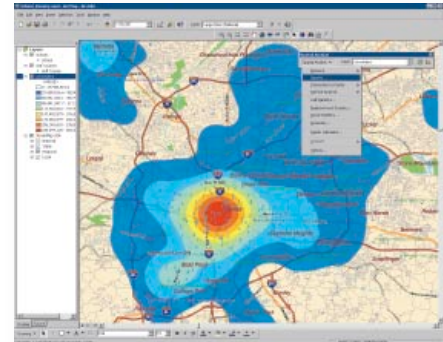
ArcEditor plus

- Advanced geoprocessing
- Data conversion
- ArcInfo Workstation

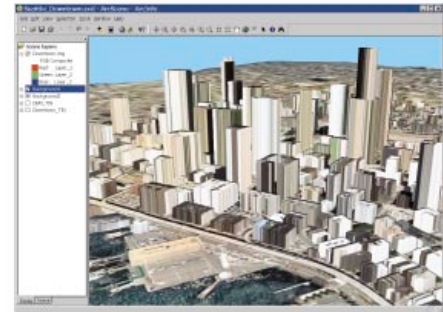
ArcGIS Extensions

Built using a common architecture, ArcView, ArcEditor, and ArcInfo share a unified extension model that dramatically extends the functional capabilities of the core desktop products. One of the key benefits of a shared extension model is the ability to operate the ArcGIS extensions with the entire line of software products including ArcView, ArcEditor, and ArcInfo. This significantly reduces training, operating, and acquisition costs.

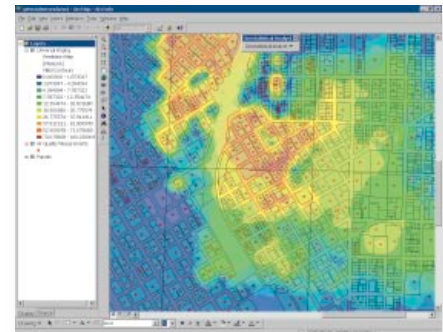
ArcGIS Spatial Analyst	Advanced spatial analysis using raster and vector data.
ArcGIS 3D Analyst™	Three-dimensional visualization, topographic analysis, and surface creation.
ArcGIS Geostatistical Analyst	Statistical tools for data exploration, modeling, and advanced surface generation.
ArcGIS Survey Analyst	Integrating and managing survey measurements in GIS.
ArcGIS Tracking Analyst	Temporal data visualization and analysis.
ArcGIS Publisher	Making maps available to everyone via ArcReader.
ArcGIS StreetMap™	Advanced address matching and street map display for Europe and the United States.
ArcScan™ for ArcGIS	Raster vectorization and simple raster editing.
ArcPress™ for ArcGIS	High-performance printing that improves color output control and printing performance.
MrSID® Encoder for ArcGIS	Compress and mosaic images up to 500 MB into MrSID format.



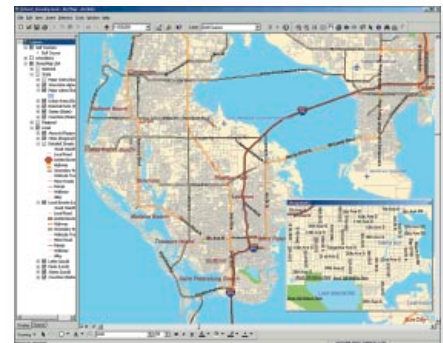
ArcGIS Spatial Analyst



ArcGIS 3D Analyst



ArcGIS Geostatistical Analyst



ArcGIS StreetMap USA

“Our lab staff was impressed with the advent of the new extensions, viewing ArcGIS 3D Analyst via ArcScene™, integrated raster and vector analysis via ArcGIS Spatial Analyst, and the accurate surface creation that ArcGIS Geostatistical Analyst provides.”

Paul Shanayda
UCS/OGIS GIS Coordinator
Ball State University



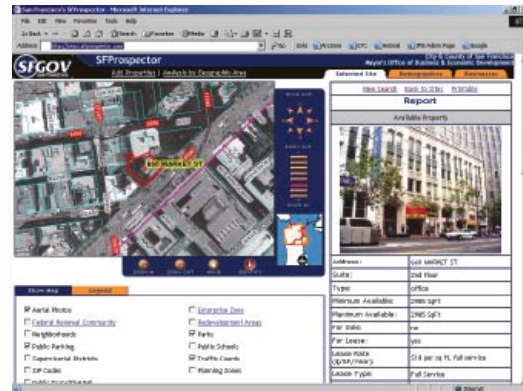
ArcSDE

ArcSDE is an application server that facilitates storing and managing spatial data (raster, vector, and survey) in a DBMS and makes the data available to many kinds of applications. ArcSDE allows you to manage spatial data in one of four commercial databases (IBM® DB2, Informix, Microsoft® SQL Server, and Oracle®). ArcSDE serves data to the ArcGIS Desktop products (ArcView, ArcEditor, and ArcInfo) and through ArcIMS. ArcSDE is a key component in managing a multiuser GIS.

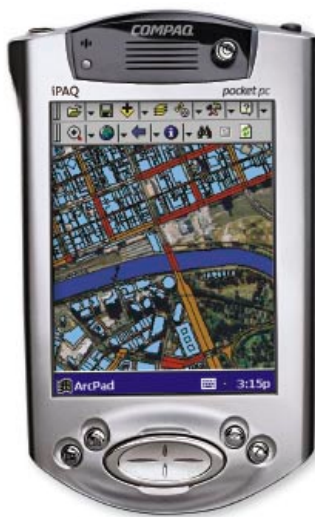


ArcIMS

ArcIMS is the foundation for distributing GIS data and services on the Internet. It enables a common platform for the exchange and sharing of resources by providing a collaborative environment for organizations to share information. ArcIMS works with a variety of clients including the ArcGIS Desktop products, ArcExplorer™, ArcPad, Web browsers, and devices that support the wireless application protocol (WAP).



ArcPad



ArcPad software is mobile mapping and geographic information system technology. ArcPad provides database access, mapping, GIS, and global positioning system (GPS) integration to users in the field via handheld and mobile devices. Data collection with ArcPad is fast, easy, and significantly improved with immediate data validation and availability.

"The ability to use ArcIMS services is one of my favorite features in ArcGIS."

Glenn Hazelton
GIS Coordinator
Massachusetts Water Resources Authority

For more information, visit
www.esri.com/arcgis



For more than 30 years ESRI has been helping people manage and analyze geographic information. ESRI offers a framework for implementing GIS technology in any organization with a seamless link from personal GIS on the desktop to enterprisewide GIS client/server and data management systems. ESRI GIS solutions are flexible and can be customized to meet the needs of our users. ESRI is a full-service GIS company, ready to help you begin, grow, and build success with GIS.

Corporate

ESRI
380 New York Street
Redlands, California
92373-8100, USA
Telephone: 909-793-2853
Fax: 909-793-5953

For more information
on ESRI, call

1-800-447-9778

(1-800-GIS-XPRT)

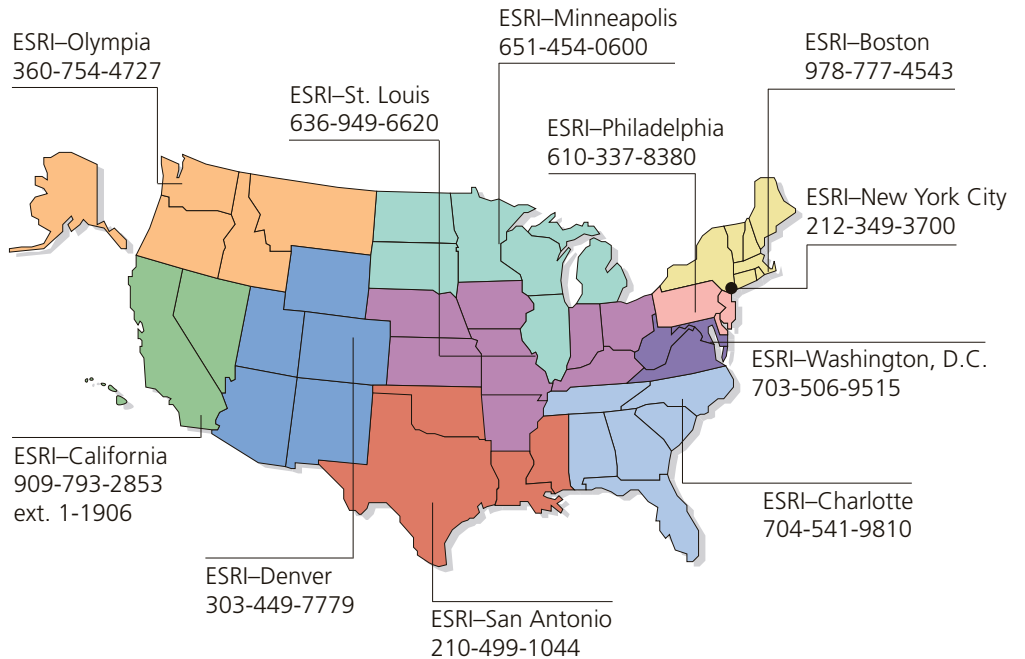
or contact an ESRI reseller near you.

Send e-mail inquiries to
info@esri.com

Visit ESRI's Web page at
www.esri.com

Outside the United States,
contact your local ESRI distributor.
For the number of your distributor,
call ESRI at 909-793-2853,
ext. 1235,
or visit our Web site at
www.esri.com/international

Regional Offices



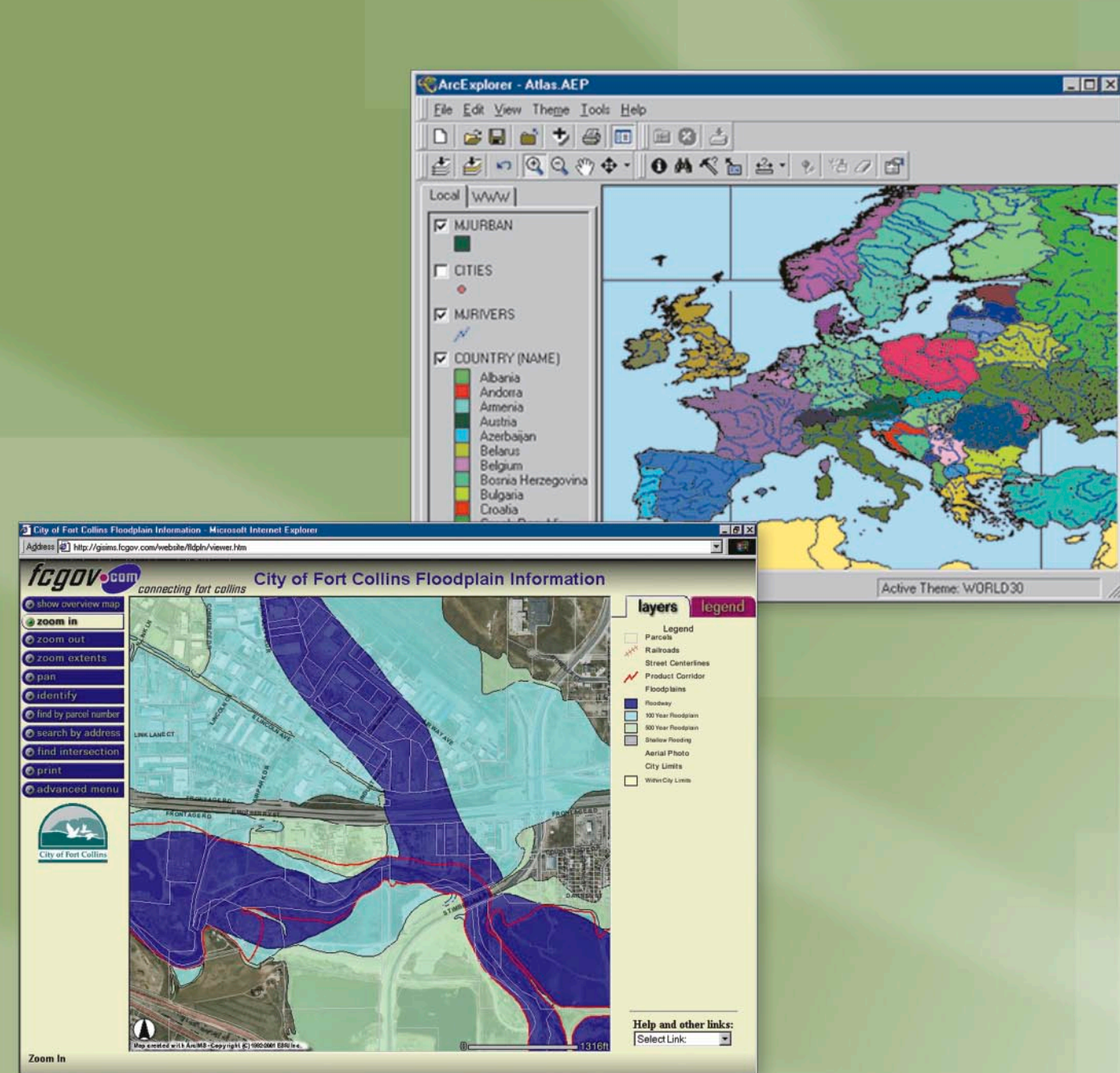
International Offices

Australia 613-9867-0447	France 33-1-46-23-6060	Japan 81-3-3794-6681	Singapore 65-6742-8622
Belgium/Luxembourg 32-2-460-7480	Germany/Switzerland 49-8166-677-0 41-1-360-2460	Korea 82-2-571-3161	Spain 34-91-559-4375
Bulgaria 359-2-964-0850	Hungary 361-428-8040	Netherlands 31-10-217-0700	Sweden 46-23-755-400
Canada 416-441-6035	India 91-11-2620-3800	Poland 48-22-326-7300	Thailand 66-2-678-0707
China (Beijing) 86-10-6554-1618	Indonesia/Malaysia 62-21-570-7685 603-7874-9930	Portugal 351-2-1-781-6640	United Kingdom 44-1296-745-500
China (Hong Kong) 852-2730-6883	Italy 39-06-406-96-1	Romania 40-21-231-13-81	Venezuela 58-212-285-9394

Place ESRI business partner or distributor address here.

Copyright © 2003 ESRI. All rights reserved. ESRI, ArcView, ArcIMS, the ESRI globe logo, ArcReader, ArcScan, ArcGIS, ArcEditor, ArcMap, ArcInfo, ArcSDE, 3D Analyst, StreetMap, ArcPress, ArcPad, ArcExplorer, the ArcGIS logo, ArcScene, @esri.com, and www.esri.com are trademarks, registered trademarks, or service marks of ESRI in the United States, the European Community, or certain other jurisdictions. Other companies and products mentioned herein are trademarks or registered trademarks of their respective trademark owners.





ArcExplorer™ is a free geographic data browser that lets you display, query, and retrieve GIS data.

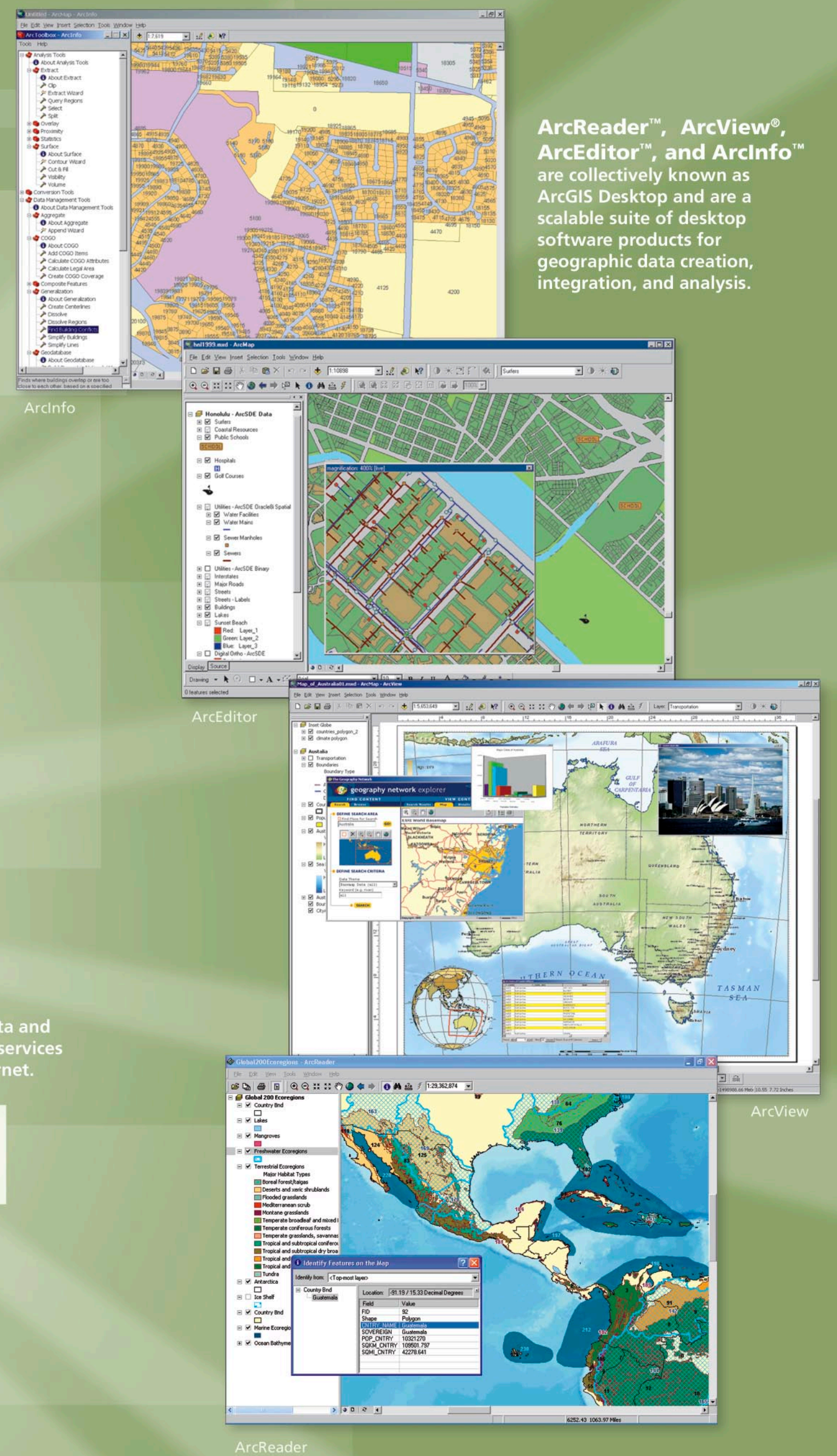
Web browsers are lightweight Web clients (HTML or Java) that complement ArcGIS® Desktop.

Lightweight Viewers

- ArcExplorer
- HTML Viewer
- Java Viewer

ArcGIS Desktop

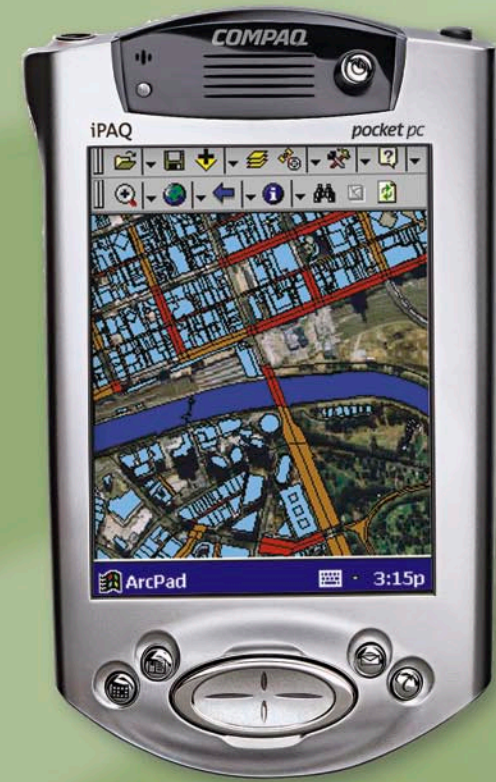
- ArcInfo
 - ArcEditor
 - ArcView
 - ArcReader
- ArcGIS Extensions



ArcReader™, ArcView®, ArcEditor™, and ArcInfo™ are collectively known as ArcGIS Desktop and are a scalable suite of desktop software products for geographic data creation, integration, and analysis.

LBS/Mobile/Wireless

- ArcPad
- Mobile Devices



ArcPad® is a lightweight, mobile mapping solution that brings GIS to the field.



WAP phone can receive maps via the wireless application protocol (WAP) and other open protocols.

Network

ArcSDE

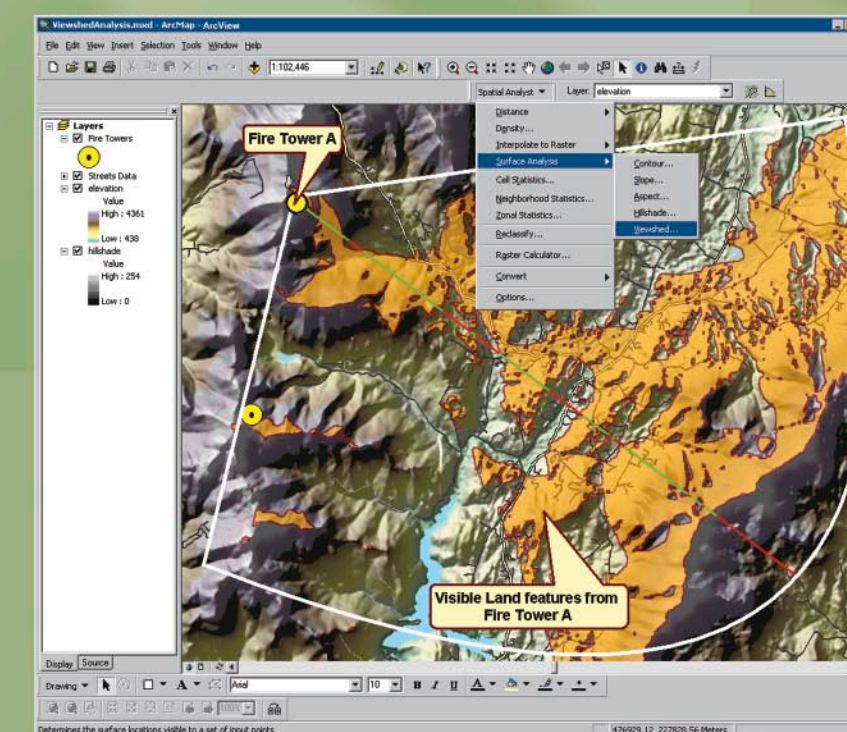
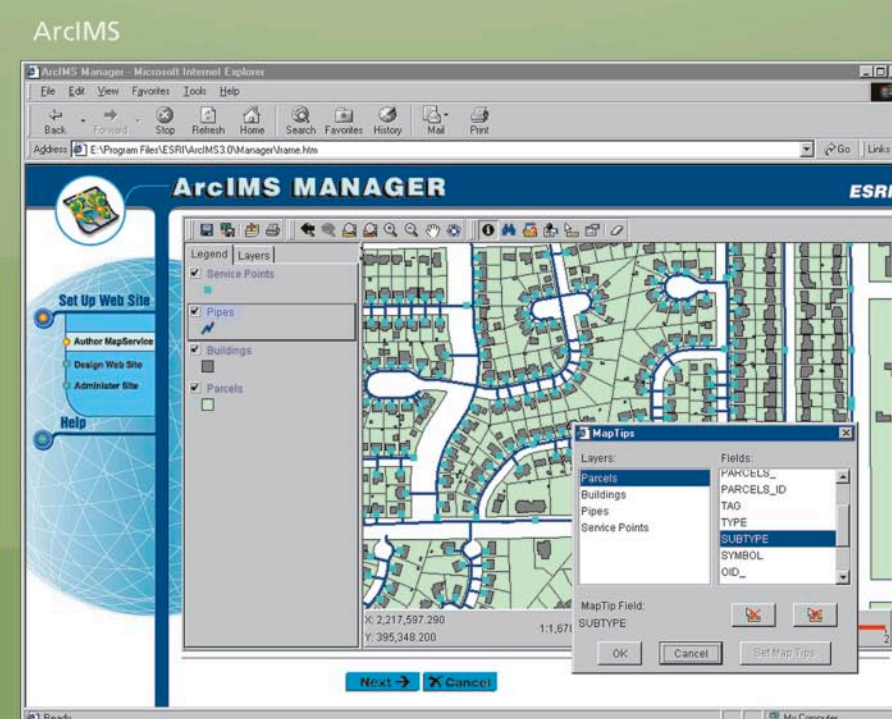
ArcSDE® is an application server that facilitates storing and managing spatial data in a DBMS.



GIS Application Servers

ArcIMS® provides data and application services via the Internet.

ArcIMS



ArcGIS extensions add specialized tools and functionality to ArcGIS Desktop.

