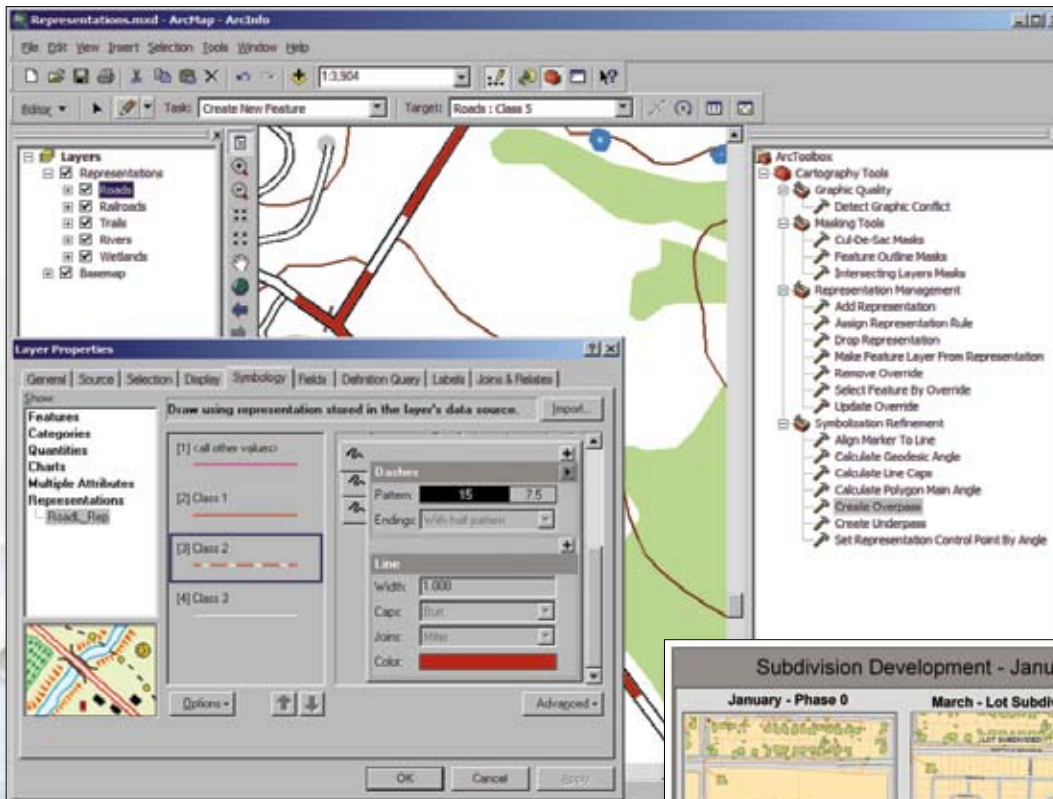


ArcGIS® 9.2

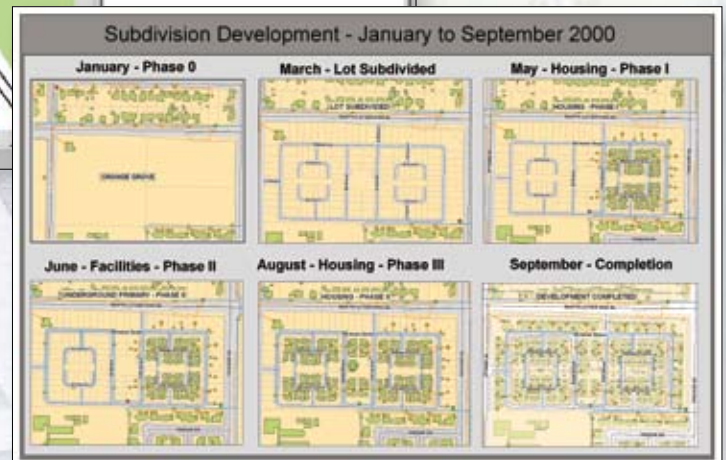
What's New in ArcGIS 9.2



ArcGIS 9.2 includes a new option for applying advanced symbology to feature layers.

With the ArcGIS 9.2 release, ESRI focused on improved usability, stability, and performance as well as quality improvements and enhancements across all products. The general usability improvements include

- New keyboard shortcuts and mouse wheel support
- New and/or improved tools including a customizable Full Extent tool, a My Places tool, a Measure tool, and a Go to XY tool
- An integrated help system based on GIS concepts and content with improved index and search capability
- Much faster geocoding
- Support for ISO 19139 metadata and OGC GML Simple Features data
- Direct read of Microsoft® Excel® files
- New COGO editing/construction tools



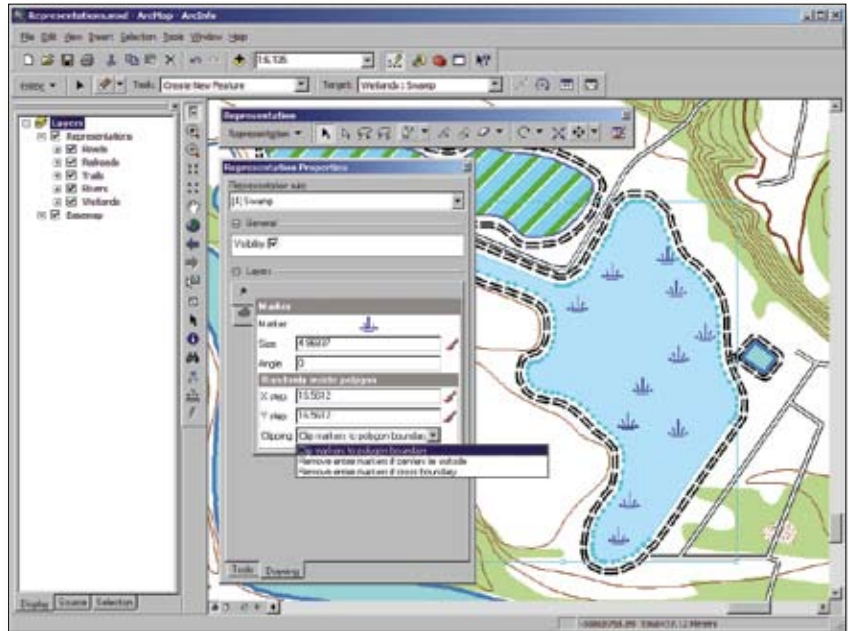
Geodatabase archiving allows you to record and display changes over time.

What's New in Desktop GIS

ESRI® ArcGIS® Desktop 9.2 provides improved tools and interfaces, support for sophisticated cartographic design, advanced modeling tools for analysis, and enhanced CAD support. At 9.2, ArcGIS Desktop extensions have also been updated with new tools and enhancements.

Cartography

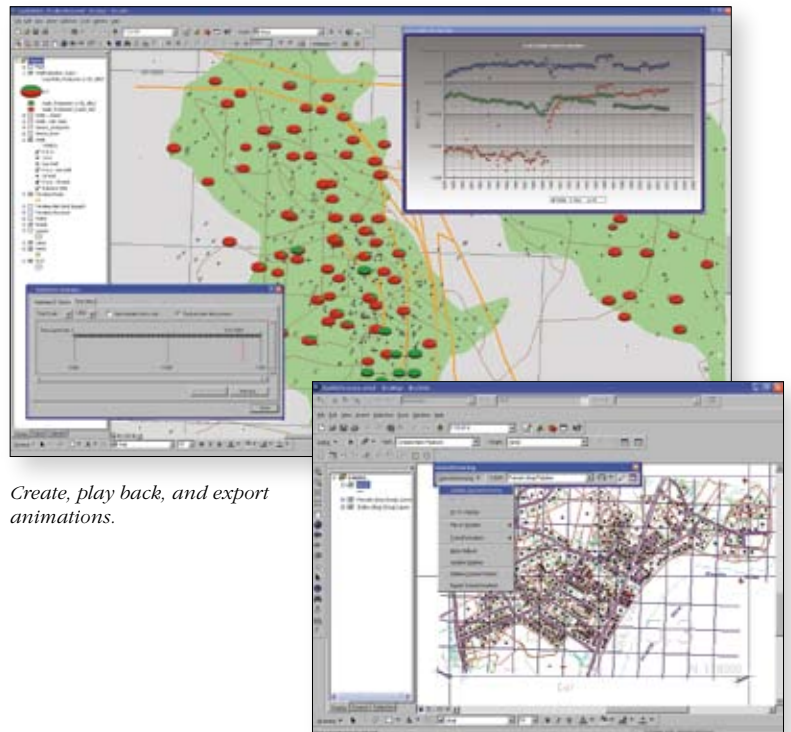
- Define advanced symbology rules.
- Dynamically apply cartographic attributes to features (smoothing, offset, etc.) without altering the source data.
- Store and manage symbology with features in the geodatabase.
- Use geoprocessing tools to find graphic conflicts and cul-de-sacs, generalize features, and automate workflows.
- Use advanced cartographic editing tools to perform final map finishing within ArcMap™.



Create and edit cartographic representations and symbols of features without modifying feature locations.

Visualization and Analysis

- Build models in ModelBuilder™ that iterate multiple times, allowing outputs to influence inputs at the next iteration. This allows for results that change over time or that are scenario specific.
- Visualize data with new graph tools including new graph types and graph and map color synchronization. Linking of data between the map and the graph is now supported.
- Analyze temporal change, patterns, and trends, including netCDF time-based and multidimensional data, using new geoprocessing tools.
- Use new animation tools to create, play back, and export animations and animated graphs.



Create, play back, and export animations.

CAD Support

- Improved CAD symbol support including matching colors, fills, and line symbols
- Improved annotation style matching and support for standard CAD annotation in ArcGIS
- Dynamic georeferencing of CAD files
- Support for extended CAD fields

Move, rotate, and scale CAD layers using the mouse.

View videos of new ArcGIS 9.2 functionality at

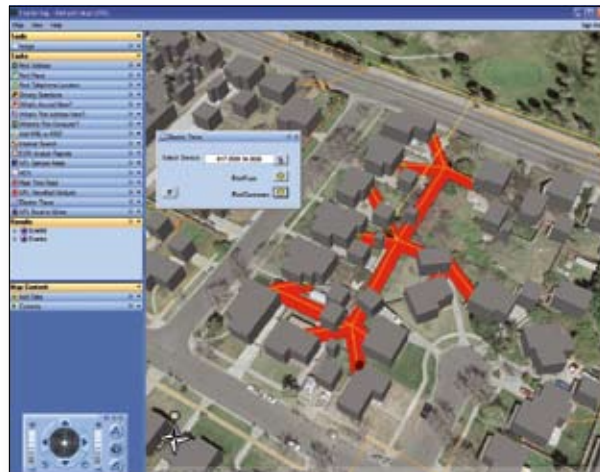
www.esri.com/92videos

What's New in Server GIS

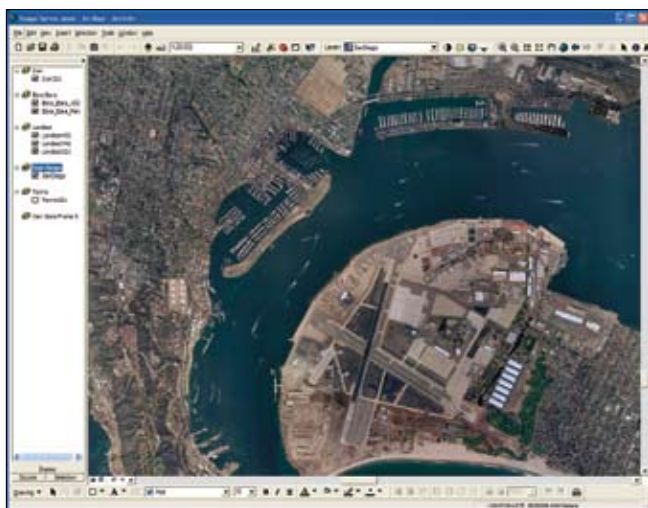
ArcGIS Server

ArcGIS Server 9.2 delivers a complete and integrated server-based GIS. It supports spatial data management, mapping, and spatial analysis across distributed systems. To achieve this, ESRI integrated ArcSDE® technology with ArcGIS Server to provide a single product encompassing Web GIS technology and comprehensive data management technology.

- Create maps, globes, and geoprocessing tasks on the desktop and easily publish them to the server for use on the Web, on the desktop, or on mobile devices.
- Take advantage of easy-to-use tools for the publication of information for GIS analysis (no programming required).
- Publish information using OGC WMS and KML to multiple clients.
- Manage and configure your Web applications using Manager, an out-of-the-box, easy-to-use application.
- Create custom applications and services for desktop, mobile, Smart Client, and enterprise deployments using a rich Application Development Framework (ADF™) for both the Java and .NET environments.



Publish GIS functionality as Web applications, GIS services, or data services.



QuickBird basic pan-sharpened image of San Diego, California.

ArcGIS Image Server

ESRI's new ArcGIS Image Server makes it easier to quickly manage, process, and distribute imagery.

- Access, visualize, and perform on-the-fly processing of large quantities of file-based imagery.
- View output imagery almost instantly in a multiple simultaneous user environment.
- Directly access multiple file formats and compression with scalable enterprise client/server architecture.
- Take advantage of optional extensions for orthorectification and seamless mosaics.

ArcIMS

ArcIMS® 9.2 offers developers and nondevelopers the ability to easily create better and faster Web applications as well as an easier installation process.

- Use the new browser-based application that makes it easy for nondevelopers to create Web applications.
- Develop customized .NET or Java Web applications with the same ADF included with ArcGIS Server.
- Deliver new tools on the client-side Web application including seamless pan, dynamic zoom, MapTips, and keyboard shortcuts.
- Search more effectively and have more control over published metadata using the new Metadata Explorer.
- Integrate multiple GIS services (e.g., ArcGIS Server, ArcIMS, Web Mapping Services, ArcWeb™ Services) in one Web application using the new multiservice architecture.

What's New in Data Management

At ArcGIS 9.2, geodatabases support additional data types, functionality, and workflows.

- Additions to the core geodatabase data model include high-precision coordinate storage, a new file geodatabase for personal data collections, and terrain support.
- Improved raster management includes additional format support, faster and more accurate reprojection, improved loading and display, and on-the-fly orthorectification and panchromatic sharpening.
- Improved transaction management includes nonversioned editing support using RDBMS short transactions, geodatabase replication between systems, and geodatabase archiving to record and display changes over time.



Perform on-the-fly panchromatic sharpening.



ESRI

380 New York Street
Redlands, California
92373-8100 USA

Phone: 909-793-2853
Fax: 909-793-5953
E-mail: info@esri.com

For More Information

1-800-GIS-XPRT (1-800-447-9778)

www.esri.com

Locate an ESRI value-added reseller near you at

www.esri.com/resellers

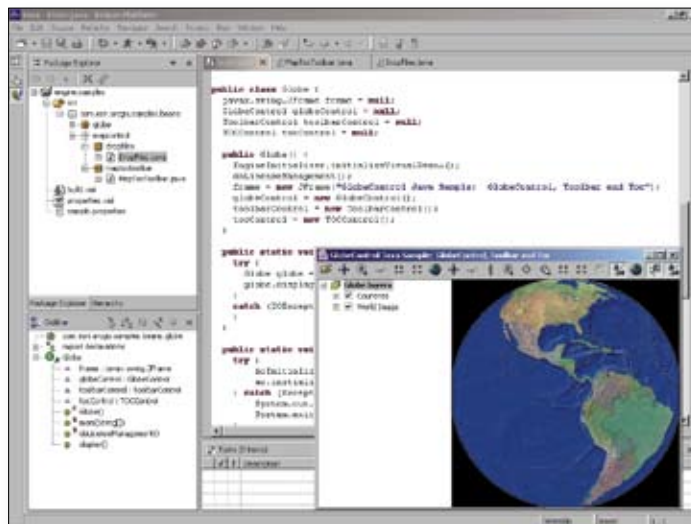
Outside the United States, contact your local ESRI distributor.

For the number of your distributor, call ESRI at 909-793-2853, ext. 1-1235, or visit our Web site at

www.esri.com/distributors

What's New for Developers

At ArcGIS 9.2, developers will benefit from enhanced usability and new functionality including better documentation, new commands and tools, and the availability of additional extensions for ArcGIS Engine.



ArcGIS Engine 9.2 includes several developer components for creating 2D and 3D applications.

- New commands such as Add Data and Identify and a symbology control
- Tighter integration in Eclipse for Java development and Visual Studio 2005 for .NET users
- Availability of Data Interoperability, Schematics, Maplex™, and Tracking as optional extensions for ArcGIS Engine

ArcGIS 9.1 users who are current on maintenance will automatically receive ArcGIS 9.2 at no additional cost. ArcGIS users not current on maintenance and/or ArcView® 3.x users should contact Customer Service at 888-377-4575 or visit <http://service.esri.com> for information on how to receive ArcGIS 9.2.



No. GS-35F-5086H