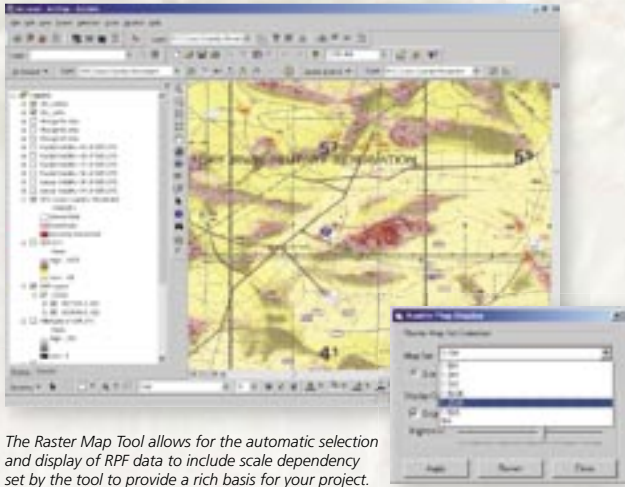


ArcGIS™ Military Analyst

GIS Tools for the Defense and Intelligence Communities



The Raster Map Tool allows for the automatic selection and display of RFP data to include scale dependency set by the tool to provide a rich basis for your project.



With the Vector Map Tool, VFP data such as DNC, VMAP 1 and 2, and UVMAP can be automatically selected and displayed. This can be performed within the NIMA GeoSym™ framework for a standardized display.



Using the DTED Tool, the applicable DTED tiles can be automatically selected and merged into a single grid. A hillshade may be applied for ease of interpretation and display. The resultant elevation matrices can be used in subsequent analysis applications.

The ArcGIS™ Military Analyst extension incorporates a suite of tools tailored to meet the special needs of the defense user and significantly enhances the effectiveness of core ArcGIS as a tool set foundation for the military planner and intelligence analyst.

ArcGIS Military Analyst maximizes the use of the standard suite of the National Imagery and Mapping Agency (NIMA) data products by allowing direct use and rendering of NIMA's vector and raster products, line-of-sight (LOS) assessments, Military Grid Reference System (MGRS) conversion, and Digital Terrain Elevation Data (DTED) analysis. ArcGIS Military Analyst also includes the Military Overlay Editor (MOLE™), which supports MIL-STD 2525B and custom war fighting symbologies.

ArcGIS already meets today's demands of a collaborative defense environment for systems to be data-centric, reusable, and inherently scalable. Combined with the release of the ArcGIS Military Analyst extension, the ArcGIS platform now provides the foundation for data-centric command, control, and intelligence (C2I) systems.

Features of ArcGIS Military Analyst

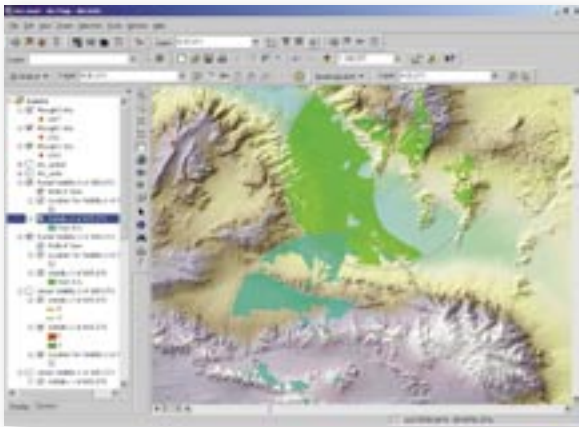
ArcGIS Military Analyst offers full customization using COM interfaces, on-the-fly projection of raster and vector data, and a suite of tools that includes

- Raster Map Tool
- Vector Map Tool
- DTED Tool
- Coordinate Tool
- Terrain Tools (2D, 3D)
- MOLE

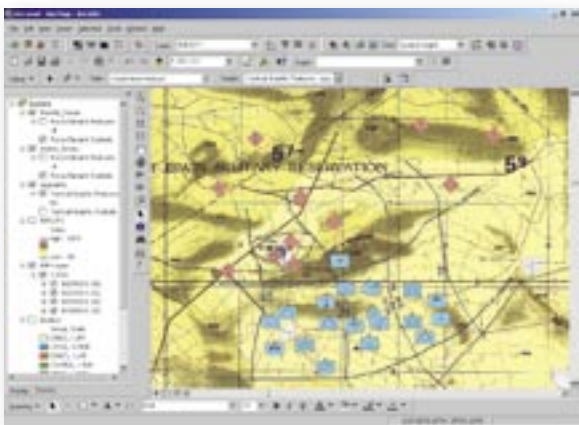




Coordinate conversion and point position entry in decimal degrees, degrees/minutes/seconds, Universal Transverse Mercator (UTM), and MGRS can be achieved by using the Coordinate Tool.



Used for visibility analysis (LOS and viewshed) and threat analysis, 2D and 3D Terrain Tools make mission planning functions analysis possible.



Order of battle databases can be imported/located and displayed in accordance with MIL-STD 2525B, and corresponding symbols and attributes edited and created in MOLE.

Data Sources

ArcGIS Military Analyst can be used with any of the data sources supported by ArcGIS Desktop products (ArcInfo™, ArcEditor™, and ArcView®) such as ArcInfo coverages, shapefiles, computer-aided design files, Vector Product Format files, TIFF, JPEG, BMP, SunRaster™, USGS DEM, DTM, NIMA DTED, generic ASCII, MrSID, and ArcGIS themes created from tabular data.

Developer Tools

ArcGIS Military Analyst tools can be accessed through Microsoft VBA, which is included with ArcGIS. ArcGIS Military Analyst, when customized with any COM-compliant language, lets you build new applications that deliver highly sophisticated military solutions, especially when combined with the ArcGIS Spatial Analyst and ArcGIS 3D Analyst™ extensions.

Supported Platforms

ArcGIS Military Analyst is available for Windows NT 4.0, Windows 2000, and Windows XP (Home Edition and Professional). ArcGIS Military Analyst 8.2 requires ArcGIS 8.2 (ArcInfo, ArcEditor, or ArcView). Users interested in the full capabilities provided by the ArcGIS Military Analyst tools also need ArcGIS Spatial Analyst and ArcGIS 3D Analyst.

Availability

ArcGIS Military Analyst is available for free to ArcGIS users who are current on their maintenance. For more information about ArcGIS Military Analyst, please visit www.esri.com/militaryanalyst.

ESRI

380 New York Street
Redlands, California
92373-8100, USA

For more information, call ESRI at
1-800-447-9778

Send e-mail inquiries to
info@esri.com

Visit ESRI's Web page at
www.esri.com