



# ESRI

*The World Leader in GIS Technology*



#### ArcGIS

- ArcView
- ArcEditor
- ArcInfo
- ArcSDE
- ArcIMS
- ArcPad
- ArcGIS Extensions
- ArcGIS Data Models

#### GIS Solutions

- MapObjects
- MapObjects LT
- ArcFM
- ArcView Business Analyst
- ArcLogistics Route
- *BusinessMAP PRO*
- *RouteMAP IMS*
- NetEngine

**Geography Matters™**



...the best GIS solution  
for real-world problems



[www.esri.com](http://www.esri.com)



## ***ESRI—Making a Difference***

On any given day, more than one million people around the world use ESRI's geographic information system (GIS) technology to improve the way their organizations conduct business. Ranked as one of the largest software companies in the world, ESRI is the world leader in the rapidly expanding industry of GIS software. Headquartered in Redlands, California, ESRI has offices throughout the United States; a Business Partner Program with more than 1,200 developers, consultants, resellers, and data providers; and a network of international distributors conducting business in more than 229 countries.

Founded in 1969, ESRI's GIS solutions are emerging as an integral component in nearly every type of business and government service. ESRI technology is used by more than 300,000 clients worldwide including most federal agencies, thousands of state and local government agencies, national mapping agencies, petroleum companies, state health departments, most forestry companies, and many others in dozens of industries.

Always forward looking, ESRI's unique management style has given GIS users what they need today while providing a solid foundation for the future.

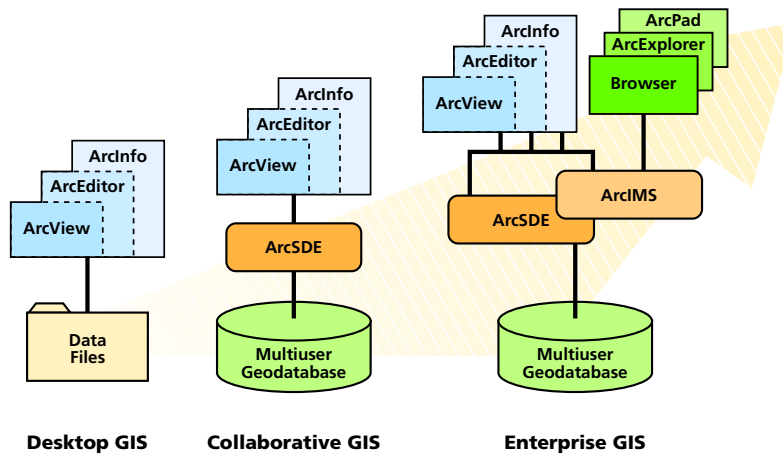
Our confidence in GIS is built on the belief that geography matters. It fundamentally influences and connects our many cultures, societies, and ways of life.

- Jack Dangermond  
ESRI Founder and President

## ArcGIS

ArcGIS™ is a family of software products that form a complete GIS built on industry standards that provide exceptional, yet easy-to-use, capabilities right out of the box. Marking a major advance in the evolution of ESRI software, Internet enabled ArcGIS includes exceptional map production, advanced feature construction tools, on-the-fly projection, vector and raster storage in a database management system (DBMS), and many other unrivaled features.

The modular architecture of the ArcGIS family lets you tailor the functional capabilities of your system. ArcView®, ArcEditor™, and ArcInfo™ (known as the ArcGIS Desktop Products) have the same core applications and user interface. From that foundation, you can add services for multiuser editing and Internet deployment. As a result, ArcGIS can scale to meet the needs of every organization, from the individual to the global enterprise.

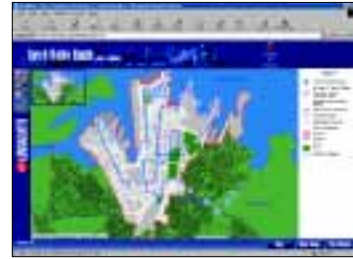


The modular and scalable nature of ArcGIS provides flexibility when configuring your system.

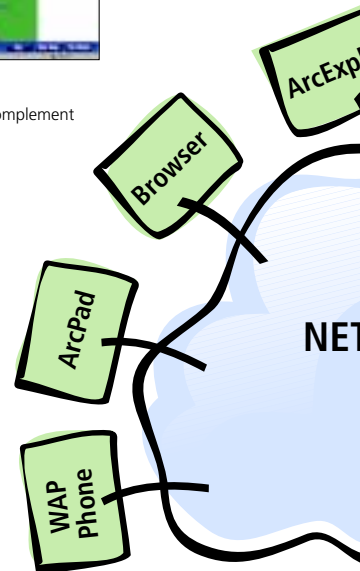
## ArcGIS

The ArcGIS software family embraces information technology (IT) standards. Featuring an intuitive Windows® user interface for desktop software, ArcGIS integrates with many databases and the open architecture allows the creation of applications that can be deployed in a “loosely coupled” distributed environment using XML protocol. As a result, ArcGIS is easily integrated into an organization.

ArcGIS features an array of Internet aware solutions including the ArcGIS Desktop Products, browsers, mobile devices, and embedded solutions. ArcView, ArcEditor, and ArcInfo software products share a consistent user experience, common code base, common extension model, and single development environment. This dramatically increases usability and interoperability while retaining flexible deployment options.



**Web Browsers** are lightweight Web clients that complement ArcGIS Desktop.

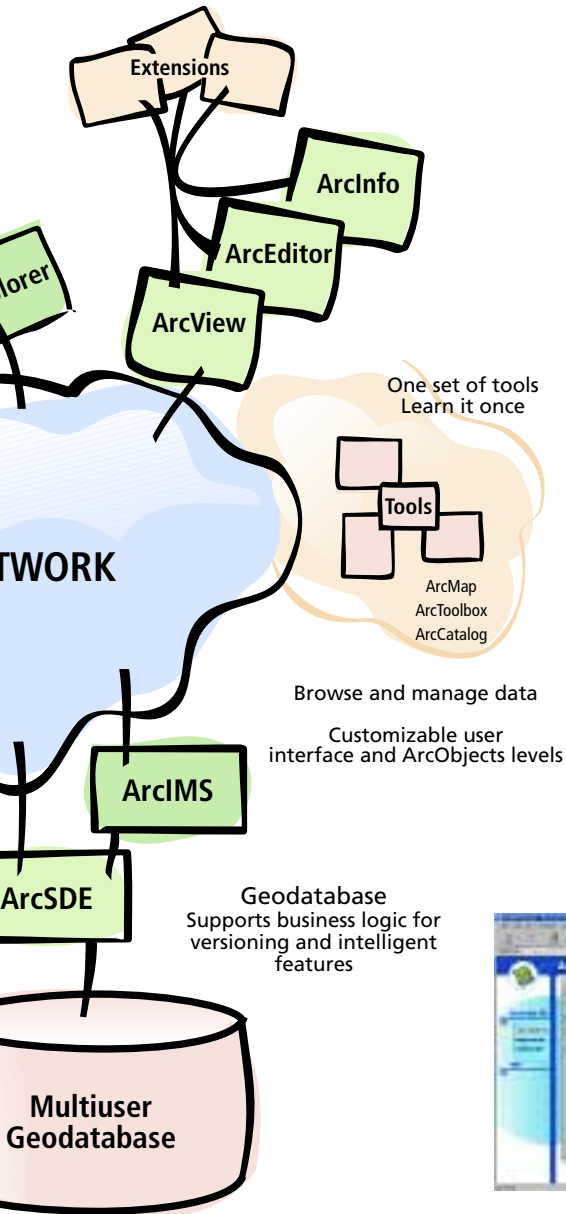


**ArcPad™** is a lightweight mobile mapping solution that can retrieve maps using wireless technology.

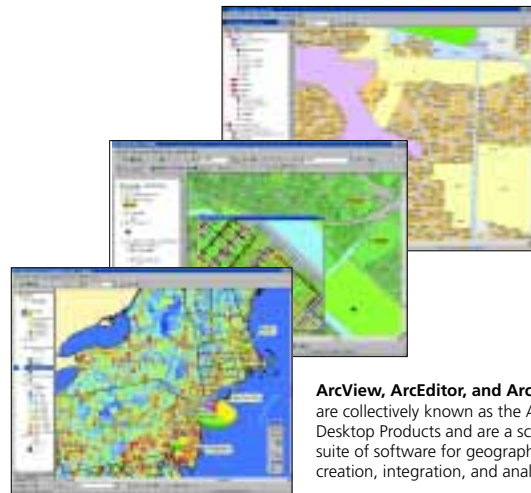


**Mobile Phone** can receive maps via the wireless application protocol (WAP) and other open protocols.

**ArcSDE™** Integrates any database management system (DBMS)



**ArcExplorer™** is a free geographic data browser that lets you display, query, and retrieve GIS data.



**ArcView, ArcEditor, and ArcInfo** are collectively known as the ArcGIS Desktop Products and are a scalable suite of software for geographic data creation, integration, and analysis.



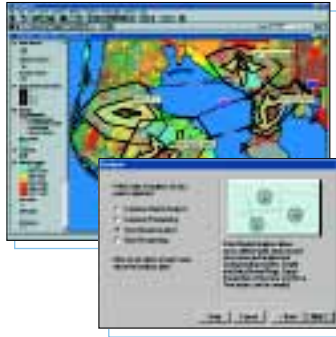
**ArcIMS®** is a powerful Internet mapping system that works with standard Internet server technology.

## Business GIS

### BusinessMAP PRO



*BusinessMAP*® PRO software is an easy-to-use, affordable desktop database mapping program designed to present business information on a map by converting your records from spreadsheets, contact managers, databases, word processors, and phone directories to points on a map. *BusinessMAP* PRO provides more than 50 customizable maps of the world including Europe, Canada, Mexico, the United States, and individual U.S. states (with streets for most every U.S. city and town).



### ArcView Business Analyst



ArcView Business Analyst is an award-winning, high-end suite of tools and data for research and analysis in one easy-to-use desktop application. It combines the world's leading desktop mapping software, ArcView GIS, with a robust catalog of nationwide data from industry-leading information providers. The wizard interface walks you through sophisticated business functions such as demographic analysis, site prospecting, and customer profiling and prospecting, and high-quality maps and detailed reports can be created quickly and easily.

## GIS for Logistics

### ArcLogistics Route



ArcLogistics™ Route software provides out-of-the-box solutions for complex vehicle routing issues. ArcLogistics Route includes a high-quality map database for the entire United States from which delivery areas can be extracted. Users can build routes based on actual network drive times and vehicle characteristics, then generate driver manifests, stop vicinity and route overview maps, route summary reports, and street-level directions.



## Internet Mapping

### RouteMAP IMS



RouteMAP™ IMS is a stand-alone Internet site locator application that also generates driving directions. This affordable, out-of-the-box Internet mapping solution is designed for companies that wish to add mapping capabilities to their Web sites. It requires no programming to create custom maps with symbols that represent a business or public sector service center.



## AM/FM GIS



### ArcFM



ArcFM™ software is a powerful ArcInfo-based application for the editing, maintenance, modeling, and data management of utility information. For electric, gas, water, and wastewater utilities and other organizations working with network and land-based data, ArcFM provides a complete solution right out of the box. Customer information systems, work management systems, SCADA, modeling, or any other existing information systems used by your organization are easily integrated with ArcFM. Along with planned or existing information systems, ArcFM helps reduce costs, eliminate data redundancy, increase data integration and efficiency, automate analysis processes, and access needed information in a facilities management system.

## GIS and Mapping Components

### MapObjects



MapObjects® software is a collection of embeddable mapping and GIS components. Developers can use MapObjects to create applications that include dynamic live maps and GIS capabilities.

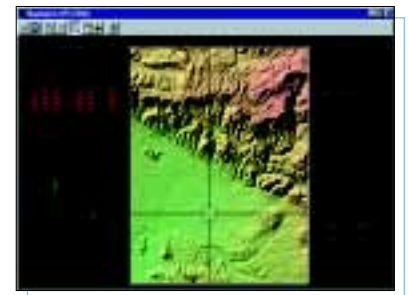
### MapObjects LT

MapObjects LT, a lightweight, royalty-free version of MapObjects, provides application developers with the tools to build lightweight data viewing applications or create new mapping programs that solve specific problems.

### NetEngine



NetEngine™ software is a collection of developer tools designed for geographic network analysis.





For more than 30 years ESRI has been helping people manage and analyze geographic information. ESRI offers a framework for implementing GIS in any organization with a seamless link from personal GIS on the desktop to enterprisewide GIS client/server and data management systems. ESRI GIS solutions are flexible and can be customized to meet the needs of our users. ESRI is a full-service GIS company, ready to help you begin, grow, and build success with GIS.

## Corporate

ESRI  
380 New York Street  
Redlands, California  
92373-8100, USA  
Telephone: 909-793-2853  
Fax: 909-793-5953

For more information  
call ESRI at

**1-800-447-9778**

(1-800-GIS-XPRT)

or contact an ESRI reseller  
near you.

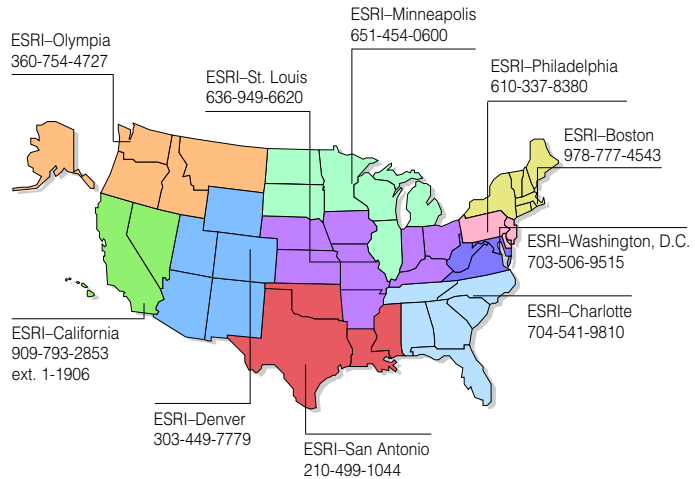
Send e-mail inquiries to  
**info@esri.com**

Visit ESRI's Web page at  
**www.esri.com**

Outside the United States,  
contact your local ESRI distributor.  
For the number of your distributor,  
call ESRI at 909-793-2853,  
ext. 1-1235,  
or visit our Web site at

**www.esri.com/international**

## Regional Offices



## International Offices

Australia 61-39-882-6222	Germany and Switzerland 49-8166-677-0 41-1-360-2460	Italy 39-06-406-96-1	Singapore 65-742-8622
Belgium/Luxembourg 32-2-460-7480	Hong Kong 852-2730-6883	Korea 82-2-571-3161	Spain 34-91-559-4375
Bulgaria 359-2-560-871	Hungary 361-428-8040	Netherlands 31-10-217-0700	Sweden 46-23-755-400
Canada 416-441-6035	India 91-11-620-3802	Poland 48-22-825-9836	Thailand 66-2-678-0707
France 33-1-46-23-6060	Indonesia/Malaysia 62-21-570-7685 603-7874-9930	Portugal 351-2-1-781-6640	United Kingdom 44-1296-745-500
		Romania 40-1-231-13-81	Venezuela 58-212-285-1134