



# ArcGIS™ Military Analyst

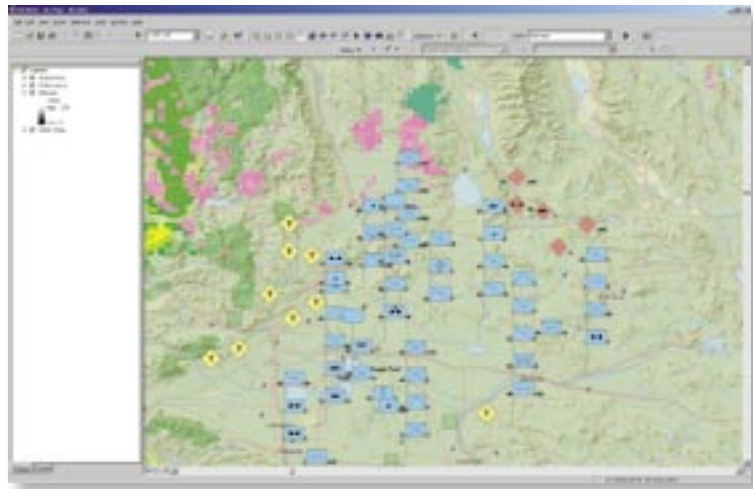
*GIS Tools for the Defense and Intelligence Communities*



# ArcGIS™ Military Analyst

*GIS Tools for the Defense and Intelligence Communities*

The ESRI® ArcGIS™ Military Analyst extension incorporates a suite of tools tailored to meet the special needs of the defense user and significantly enhances the effectiveness of core ArcGIS as a tool set foundation for the military planner and intelligence analyst. ArcGIS Military Analyst maximizes the use of the standard suite of the National Imagery and Mapping Agency (NIMA) data products by allowing direct use and rendering of NIMA's vector and raster products, line-of-sight (LOS) assessments, Military Grid Reference System (MGRS) conversion, and Digital Terrain Elevation Data (DTED) analysis. ArcGIS Military Analyst also includes the Military Overlay Editor (MOLE™), which supports MIL-STD 2525B and custom war fighting symbologies.



*By providing easier access and usability for the military raster, vector, and elevation data, ArcGIS Military Analyst allows the defense analyst to focus on data analysis rather than on managing data files.*

ArcGIS already meets today's demands of a collaborative defense environment for systems to be data-centric, reusable, and inherently scalable. Combined with the release of the ArcGIS Military Analyst extension, the ArcGIS platform now provides the foundation for data-centric command, control, and intelligence (C2I) systems.

## Features of ArcGIS Military Analyst

ArcGIS Military Analyst offers full customization using COM interfaces, on-the-fly projection of raster and vector data, and a suite of tools that includes

- Raster Map Tool
- Vector Map Tool
- DTED Tool
- Coordinate Tool
- Terrain Tools (two-dimensional, three-dimensional)
- MOLE

Suite of  
Tools

# Raster Map Tool



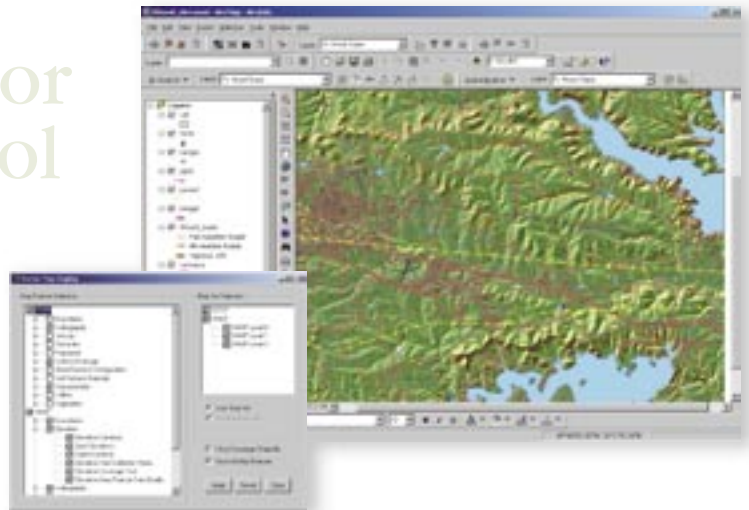
## Raster Map Tool

The Raster Map Tool is used for rendering raster product format (RPF) products (Compressed ARC Digitized Raster Graphics [CADRG] and Controlled Image Base [CIB]). The Raster Map Tool allows for the automatic selection and display of RPF data to include scale dependency set by the tool to provide a rich basis for your project.

# Vector Map Tool

## Vector Map Tool

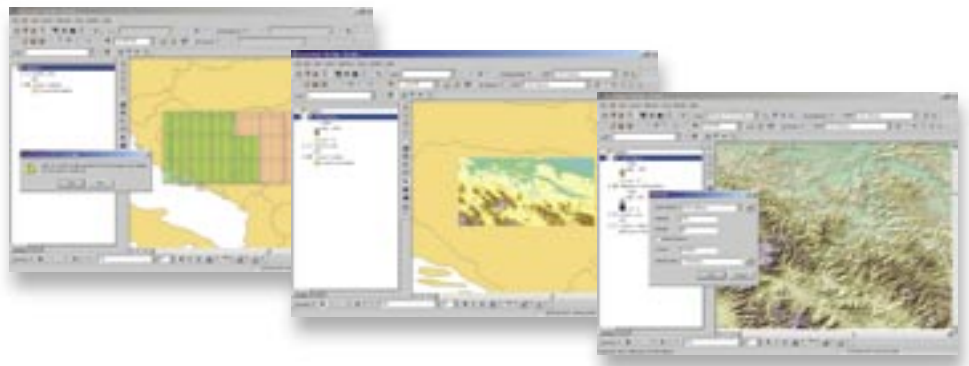
The Vector Map Tool is used for rendering Vector Product Format (VPF) products (Vector Map [VMap] and Digital Nautical Charts [DNC]) including support for NIMA symbology (GeoSym™ standard). With the Vector Map Tool, VPF data, such as DNC, VMap 1 and 2, and UVMMap, can be automatically selected and displayed. This can be performed within the NIMA GeoSym framework for a standardized display.

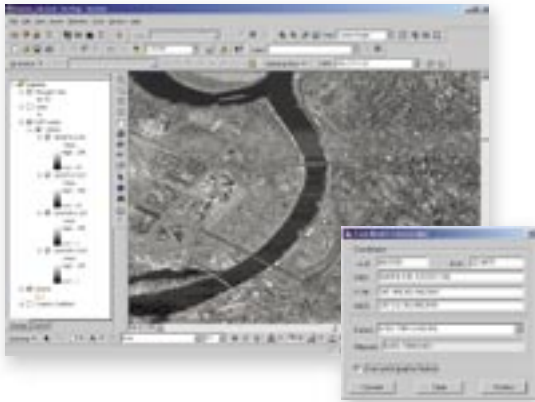


# DTED Tool

## DTED Tool

DTED is an analysis and merge tool. Using the DTED Tool, the applicable DTED tiles can be automatically selected and merged into a single grid. A hillshade may be applied for ease of interpretation and display. The resultant elevation matrixes can be used in subsequent analysis applications. The DTED Tool requires the ArcGIS Spatial Analyst extension.





### Coordinate Tool

The Coordinate Tool supports MGRS and coordinate conversion. Coordinate conversion and point position entry in decimal degrees, degrees/minutes/seconds, Universal Transverse Mercator (UTM), and MGRS can be achieved by using the Coordinate Tool.

# Coordinate Tool



# Terrain Tool 2D



### Terrain Tools 2D and 3D

Used for visibility analysis (LOS and viewshed) and threat analysis, Terrain Tools 2D and 3D make mission planning functions analysis possible. Terrain Tools 2D and 3D require the licensing of ArcGIS Spatial Analyst and ArcGIS 3D Analyst™ extensions.

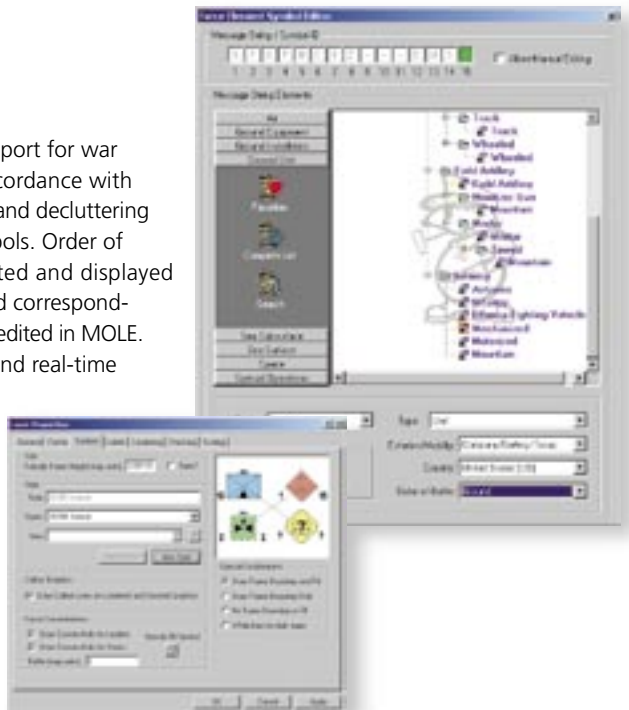
# Terrain Tool 3D

### Military Overlay Editor (MOLE)

Through MOLE, ArcGIS Military Analyst provides support for war fighting symbology (point, line, and polygon) in accordance with MIL-STD 2525B; automatic leadering, stacking, and decluttering of symbols; and user-customizable symbols. Order of battle databases can be imported/located and displayed in accordance with MIL-STD 2525B, and corresponding symbols and attributes created and edited in MOLE. Linking to unattended ground sensors and real-time track information through the ArcGIS Tracking Analyst extension make true intelligence fusion and situational awareness a reality.

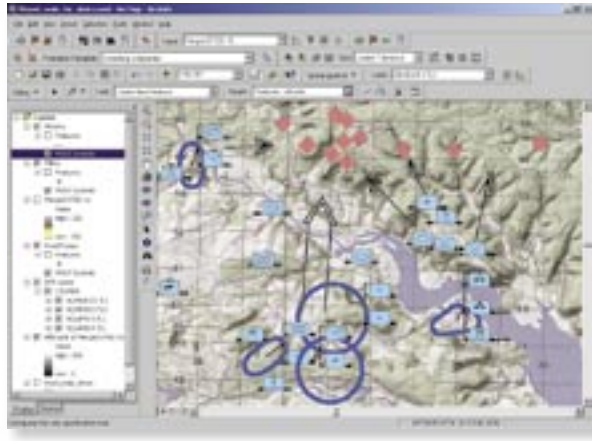


# MOLE



## Data Sources

ArcGIS Military Analyst can be used with any of the data sources supported by ArcGIS Desktop products (ArcInfo™, ArcEditor™, and ArcView®) such as ArcInfo coverages, shapefiles, computer-aided design (CAD) files, Vector Product Format files, TIFF, JPEG, BMP, SunRaster™, USGS DEM, DTM, NIMA DTED, generic ASCII, MrSID®, and ArcGIS themes created from tabular data.



## Developer Tools

ArcGIS Military Analyst tools can also be accessed through Microsoft® VBA, which is included with ArcGIS. ArcGIS Military Analyst, customized with any COM-compliant language, allows you to build new applications that deliver highly sophisticated military solutions, especially when combined with the optional ArcGIS Spatial Analyst and ArcGIS 3D Analyst extensions.

## Supported Platforms

ArcGIS Military Analyst is available for Windows NT® 4.0, Windows® 2000, and Windows XP (Home Edition and Professional). ArcGIS Military Analyst requires ArcInfo, ArcEditor, or ArcView. Users interested in the full capabilities provided by the ArcGIS Military Analyst tools also need the ArcGIS Spatial Analyst and ArcGIS 3D Analyst extensions.

## Availability

ArcGIS Military Analyst is available at no cost to ArcGIS users with current software maintenance agreements. Qualified users who want ArcGIS Military Analyst should contact their customer service organization. Within the United States, call ESRI customer service at 1-888-377-4575 or call your ESRI regional office (to locate your regional office, visit [www.esri.com/usa](http://www.esri.com/usa)). Outside the United States, contact your local ESRI distributor.

## More Information

For more information about ArcGIS Military Analyst, please visit [www.esri.com/militaryanalyst](http://www.esri.com/militaryanalyst). For more information about ESRI solutions for defense, please visit [www.esri.com/defense](http://www.esri.com/defense).

*ESRI has a broad range of experience supplying COTS technology for integration within the defense community, and ESRI solutions provide unrivaled functionality, flexibility, and scalability.*



For more than 30 years ESRI has been helping people manage and analyze geographic information. ESRI offers a framework for implementing GIS technology in any organization with a seamless link from personal GIS on the desktop to enterprisewide GIS client/server and data management systems. ESRI GIS solutions are flexible and can be customized to meet the needs of our users. ESRI is a full-service GIS company, ready to help you begin, grow, and build success with GIS.

## Corporate

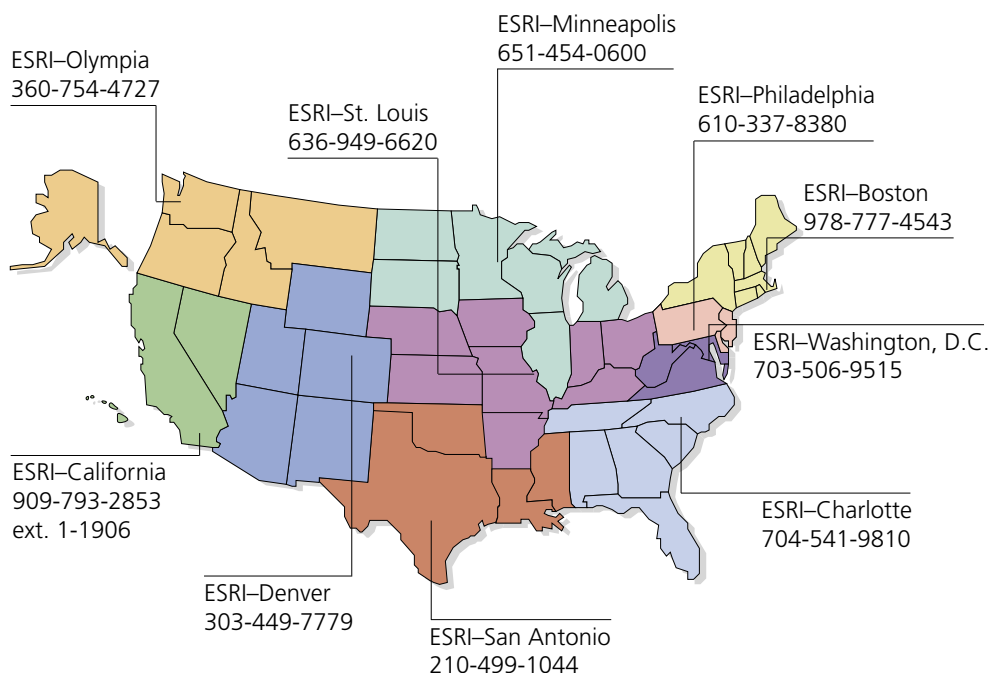
ESRI  
380 New York Street  
Redlands, California  
92373-8100, USA  
Telephone: 909-793-2853  
Fax: 909-793-5953

For more information  
on ESRI, call  
**1-800-447-9778**  
(1-800-GIS-XPRT)

Send e-mail inquiries to  
**info@esri.com**

Visit ESRI's Web page at  
**www.esri.com**

## Regional Offices



## International Offices

Outside the United States,  
contact your local ESRI distributor.  
For the number of your distributor,  
call ESRI at 909-793-2853,  
ext. 1235,  
or visit our Web site at  
**www.esri.com/international**

Australia 613-9867-0447	Hong Kong 852-2730-6883	Korea 82-2-571-3161	Spain 34-91-559-4375
Belgium/Luxembourg 32-2-460-7480	Hungary 361-428-8040	Netherlands 31-10-217-0700	Sweden 46-23-755-400
Bulgaria 359-2-964-0850	India 91-11-620-3802	Poland 48-22-825-9836	Thailand 66-2-678-0707
Canada 416-441-6035	Indonesia/Malaysia 62-21-570-7685 603-7874-9930	Portugal 351-2-1-781-6640	United Kingdom 44-1296-745-500
France 33-1-46-23-6060	Italy 39-06-406-96-1	Romania 40-1-231-13-81	Venezuela 58-212-285-9394
Germany and Switzerland 49-8166-677-0 41-1-360-2460	Japan 81-3-3794-6681	Singapore 65-742-8622	

Place ESRI business partner or distributor address here.

Copyright © 2002 ESRI. All rights reserved. ESRI, ArcView, the ESRI globe logo, MOLE, ArcInfo, ArcEditor, ArcGIS, the MOLE logo, the ArcGIS logo, 3D Analyst, @esri.com, and www.esri.com are trademarks, registered trademarks, or service marks of ESRI in the United States, the European Community, or certain other jurisdictions. Other companies and products mentioned herein are trademarks or registered trademarks of their respective trademark owners.



No. GS-35F-5086H