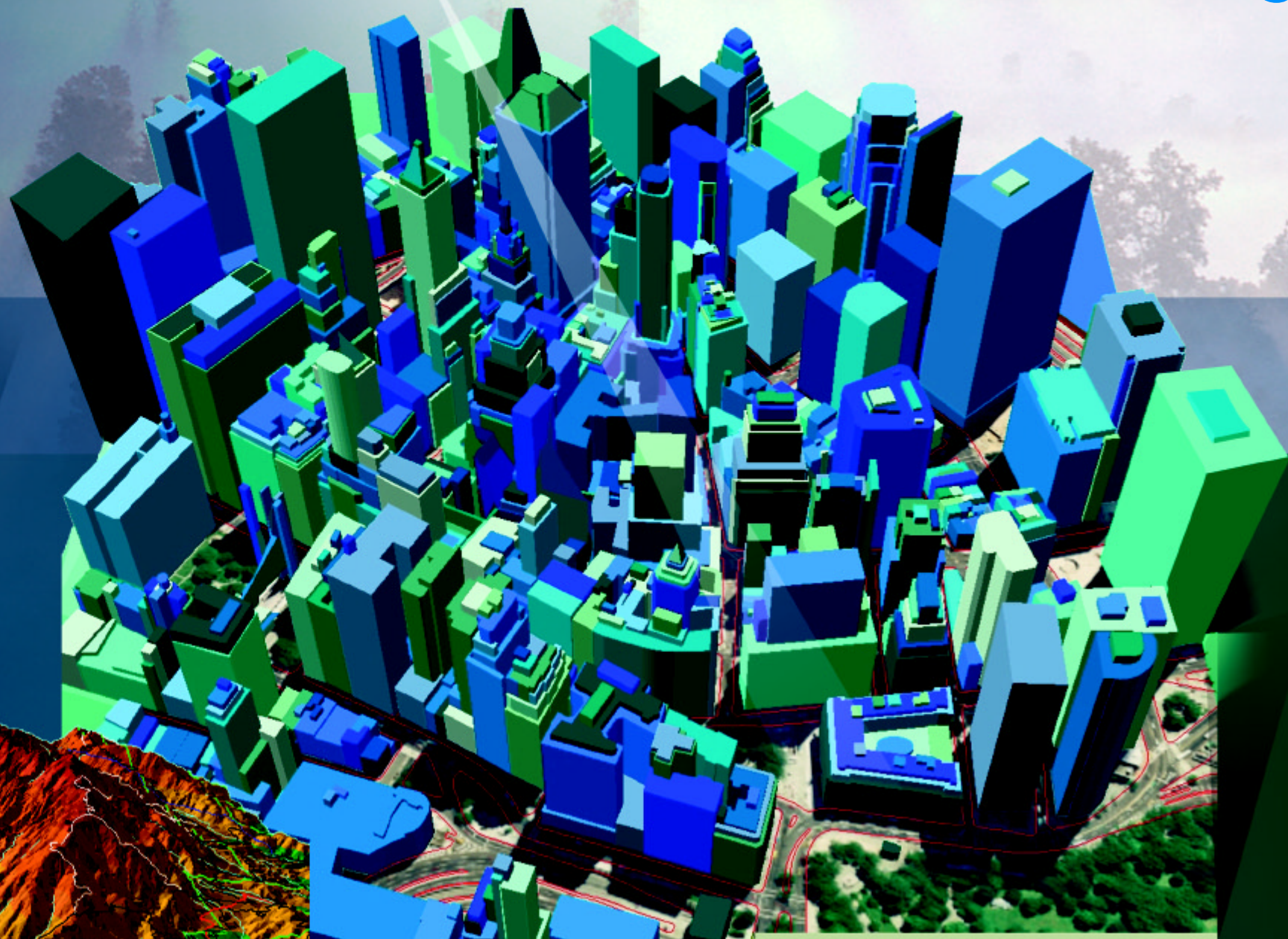


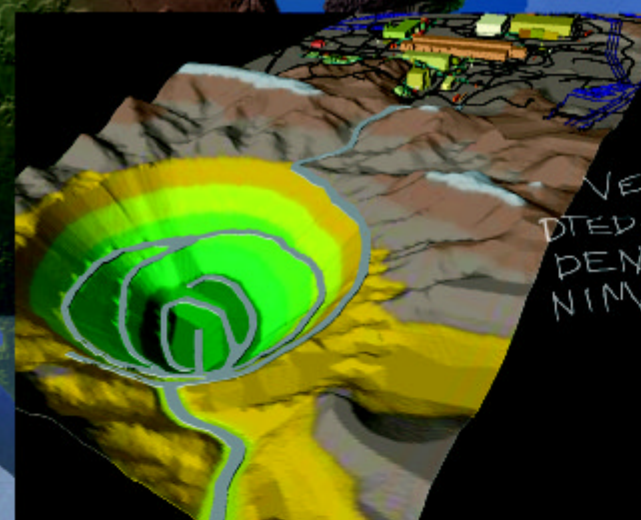
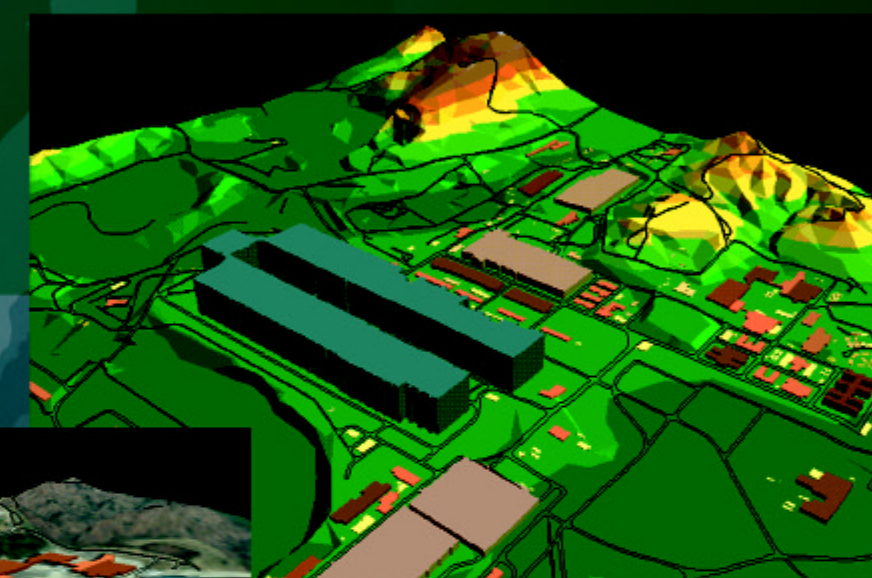
# ArcGIS™ 3D Analyst™

*Three-Dimensional Visualization, Topographic Analysis,  
and Surface Creation*

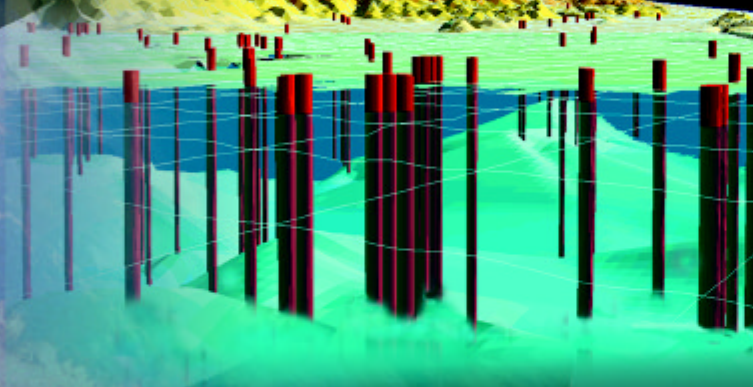
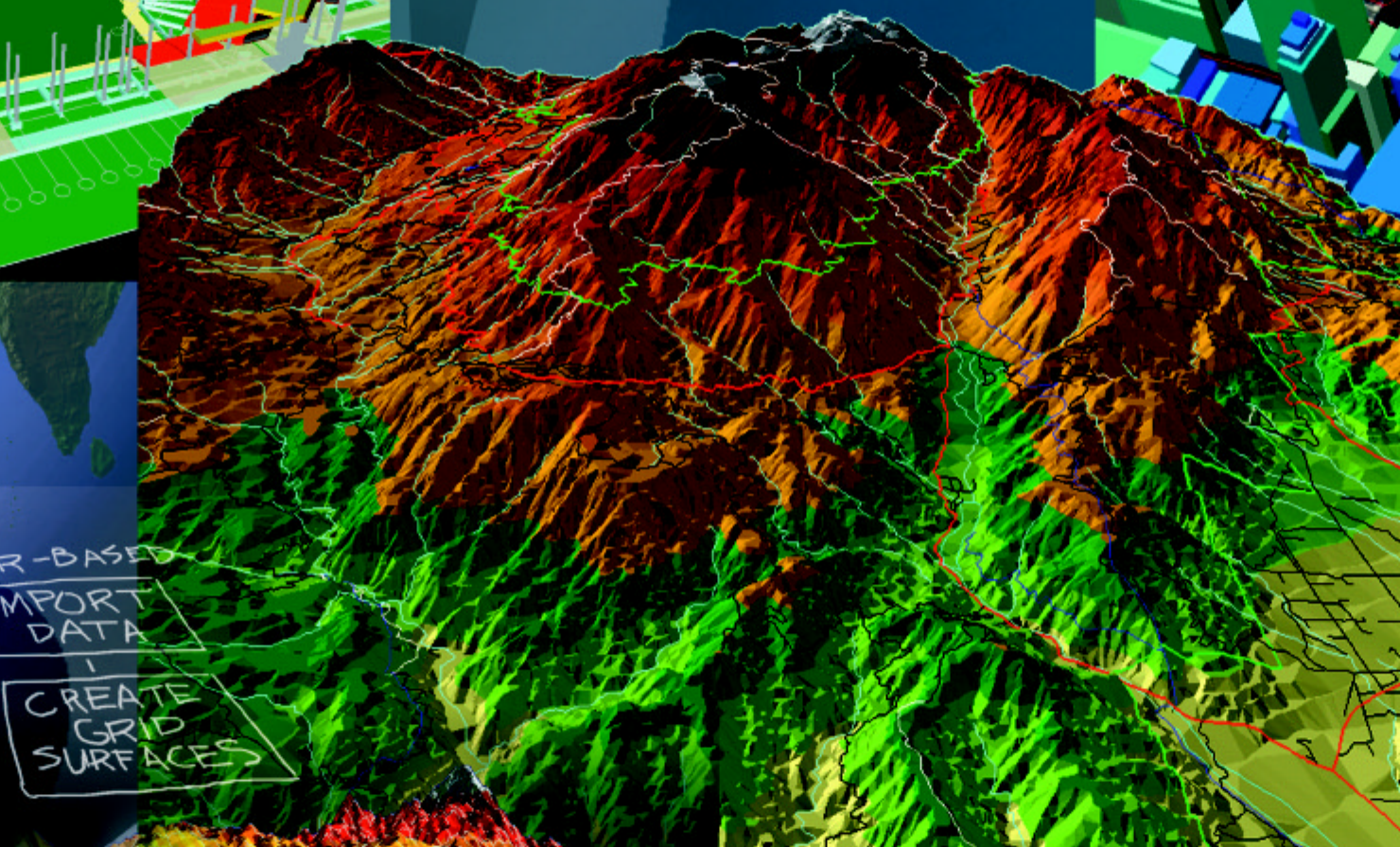


▲ New York City 3D Building Model Provided Courtesy ASI Technologies

- Interactive Perspective Viewing
- Line-of-Sight Analysis
- Viewshed Analysis
- Spot Height Interpolation
- Contouring
- And Much More!



▲ Mining Data Provided Courtesy MINTEC, Inc.



ArcGIS™ Spatial Analyst

ArcGIS 3D Analyst™

ArcGIS Geostatistical Analyst

ArcGIS StreetMap™

ArcPress™ for ArcGIS

MrSID™ Encoder for ArcGIS

Create Three-Dimensional Visualization

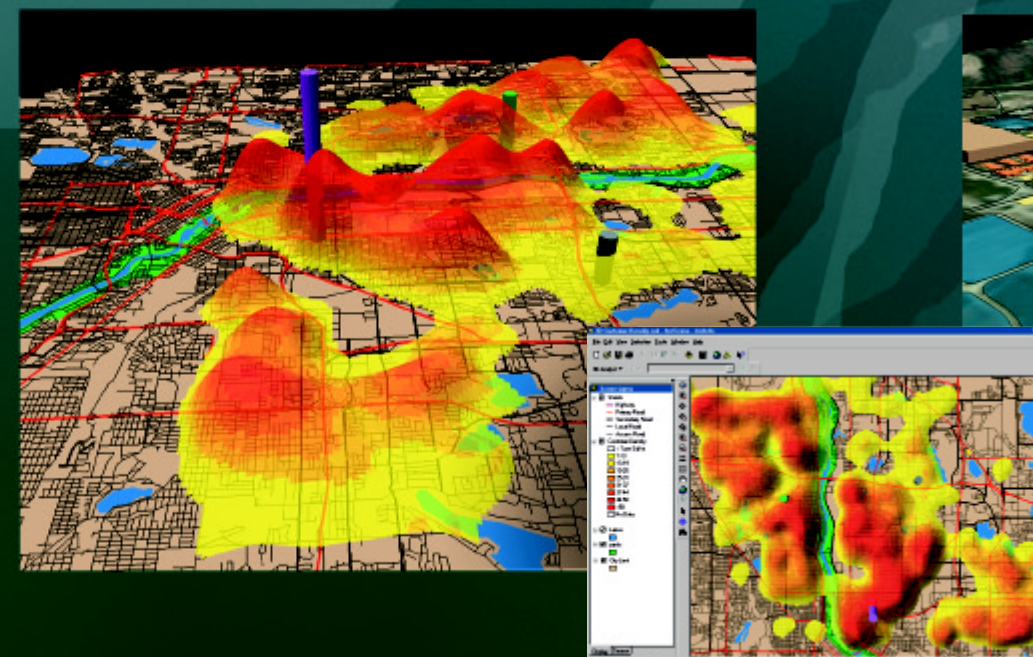
Model Real-World Surface Features

Perform Topographic Analysis

Query Three-Dimensional Data

Build Surface Models

Generate Fly-Through Simulations



## ArcGIS 3D Analyst

For more information call 1-800-447-9778 or visit  
ESRI's Web site at [www.esri.com/3danalyst](http://www.esri.com/3danalyst)

