

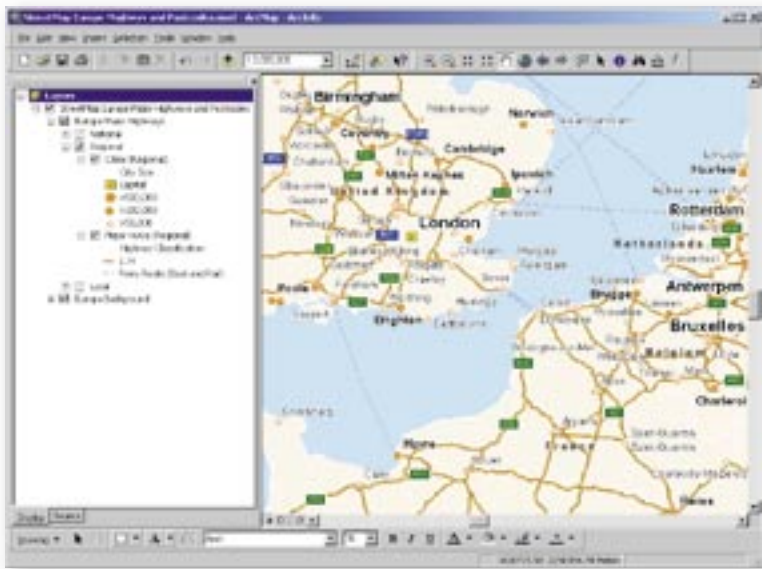
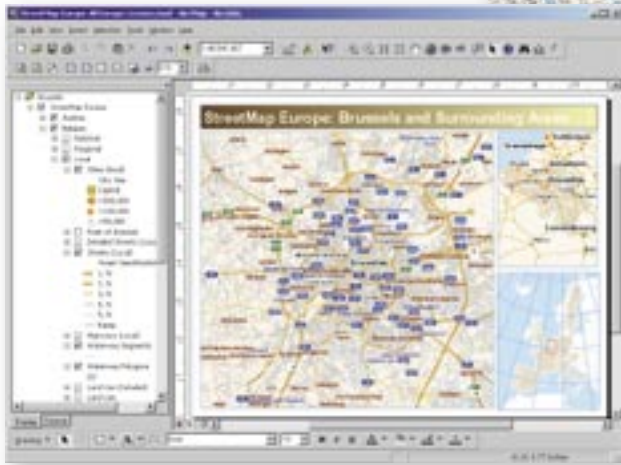
# ArcGIS™ StreetMap™ Europe

# ArcGIS™ StreetMap™ Europe

*Advanced European Address Matching and Street Map Display*

ESRI® ArcGIS™ StreetMap™ Europe is an extension to ArcView®, ArcEditor™, and ArcInfo™ that provides powerful and easy-to-use European street map display and geocoding (address matching). StreetMap layers automatically manage, label, and draw features such as local landmarks, streets, parks, and water bodies.

ArcGIS StreetMap Europe is available for the following countries: Austria, Belgium, Denmark, France, Germany, Italy, Luxembourg, the Netherlands, Portugal, Spain, Sweden, Switzerland, and the United Kingdom.



With the intertown option, major roads and highways are symbolized along with towns and cities.

ArcGIS StreetMap Europe features include the following:

- Ability to work with all ArcGIS Desktop products (ArcView, ArcEditor, and ArcInfo)
- Graphic display of streets and other geographic features
- Display of the geocoded location of a single address as a graphic point on the StreetMap layer
- Autolabeling of the StreetMap layer
- Ability to export the StreetMap features into other feature classes
- Identify features
- Display of attribute tables
- Ability to geocode multiple addresses in a table\*
- Ability to write geocoded locations of addresses in a table into a new point feature class\*



ArcGIS StreetMap Europe is offered in two different data options: intertown or detailed streets. The intertown option is a single data set that covers all of the listed countries. The detailed street option is available separately for each individual country or as a package that includes the data for all the listed countries. The detailed street option enables users to geocode against the data set.

### Geocoding\*

ArcGIS StreetMap Europe provides geocoding for a single address or multiple addresses contained in a data file. Simply type in an address, and ArcGIS StreetMap Europe will zoom to a local street map of the area around that address and mark the location on a map. ArcGIS StreetMap Europe also locates multiple addresses from contact lists, client lists, customer databases, and other sources of address information. Match sensitivity and spelling correction are also adjustable by the user.

ArcGIS StreetMap Europe is powered by  
NAVTECH NAVSTREETS.



### Supported Geocoding Functions\*

- Geocodes and finds a single address
- Geocodes addresses from tabular data files
- Rematches and reviews addresses with an interactive review dialog box
- Allows street intersection matching
- Allows place name alias matching
- Provides alternate names in reference data matching
- Allows automatic updates of the geocoded result when records in the address table are modified with the editing tool
- Controls geocoding preferences such as point distance offset, end offset, spelling sensitivity, minimum match score, multiple street intersection connectors, and automatic matching if candidates tie in score



Visit: [www.esri.com/streetmap](http://www.esri.com/streetmap)

\* Geocoding functionality is only available with the detailed street option.

The detailed street option provides geocoding for single and multiple addresses.



For more than 30 years ESRI has been helping people manage and analyze geographic information. ESRI offers a framework for implementing geographic information system (GIS) technology in any organization with a seamless link from personal GIS on the desktop to enterprisewide GIS client/server and data management systems. ESRI® GIS solutions are flexible and can be customized to meet the needs of our users. ESRI is a full-service GIS company, ready to help you begin, grow, and build success with GIS.

## Corporate

ESRI  
380 New York Street  
Redlands, California  
92373-8100, USA  
Telephone: 909-793-2853  
Fax: 909-793-5953

For more information  
on ESRI, call

**1-800-447-9778**

(1-800-GIS-XPRT)

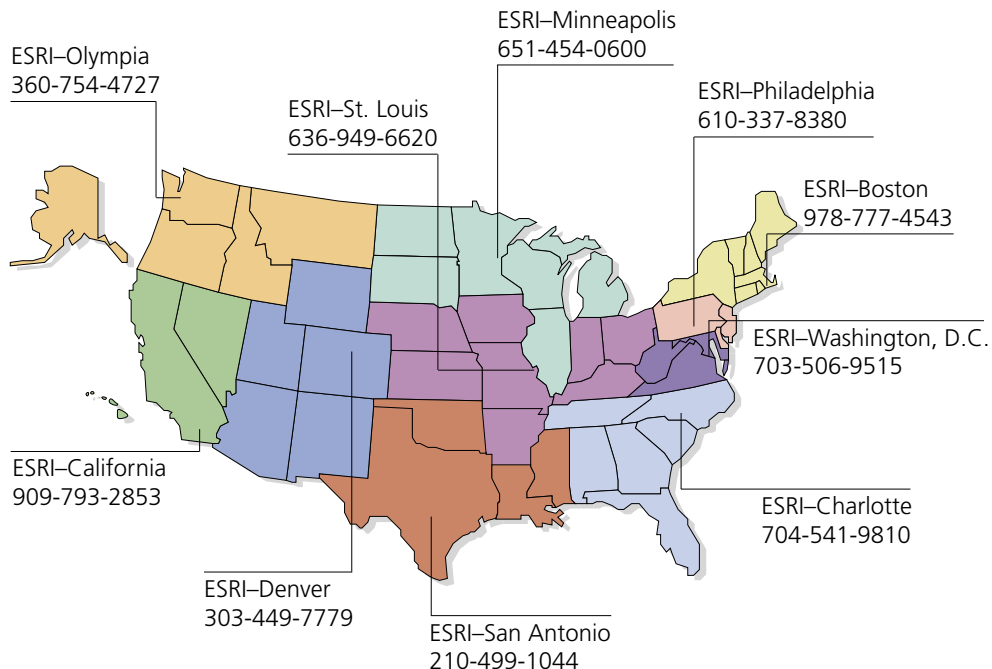
Send e-mail inquiries to

**info@esri.com**

Visit ESRI's Web page at

**www.esri.com**

## Regional Offices



## International Offices

Outside the United States,  
contact your local ESRI distributor.  
For the number of your distributor,  
call ESRI at 909-793-2853,  
ext. 1235,  
or visit our Web site at  
**www.esri.com/international**

Australia 613-9867-0447	Germany and Switzerland 49-8166-677-0 41-1-360-2460	Italy 39-06-406-96-1	Singapore 65-742-8622
Belgium/Luxembourg 32-2-460-7480	Hong Kong 852-2730-6883	Korea 82-2-571-3161	Spain 34-91-559-4375
Bulgaria 359-2-964-0850	Hungary 361-428-8040	Netherlands 31-10-217-0700	Sweden 46-23-755-400
Canada 416-441-6035	India 91-11-620-3802	Poland 48-22-825-9836	Thailand 66-2-678-0707
France 33-1-46-23-6060	Indonesia/Malaysia 62-21-570-7685 603-7874-9930	Portugal 351-2-1-781-6640	United Kingdom 44-1296-745-500
		Romania 40-1-231-13-81	Venezuela 58-212-285-9394

Place ESRI business partner or distributor address here.

Copyright © 2002 ESRI. All rights reserved. ESRI, ArcView, the ESRI globe logo, ArcInfo, ArcEditor, ArcGIS, the ArcGIS logo, StreetMap, ArcMap, @esri.com, and www.esri.com are trademarks, registered trademarks, or service marks of ESRI in the United States, the European Community, or certain other jurisdictions. Other companies and products mentioned herein are trademarks or registered trademarks of their respective trademark owners.



No. GS-35F-5086H