

# What Users Are Saying About ArcGIS 8.1

“Powerful, Practical, Extensive, Accessible, and Improved.” ESRI® ArcGIS™ 8.1 users are not at a loss for words when they respond to the question, “What features of ArcGIS 8.1 are most appealing to you?” The breadth of our users and variety of their responses illustrate that ArcGIS 8.1 has a widespread appeal for many different reasons.

Try ArcGIS 8.1 and see for yourself what has the geographic information system (GIS) world talking.

*“The new ArcEditor™ is really handy, practical, and easy to use.”*

Jean-François Desjardins  
Tecsult  
GIS Consultant

*“The easy user interface of ArcGIS is most appealing.”*

Dr. Fred Collins  
IBM Global Service Federal  
Information Technology Architect

*“Our lab staff was impressed with the advent of the new extensions, viewing ArcGIS 3D Analyst™ via ArcScene™, integrated raster and vector analysis via ArcGIS Spatial Analyst, and the accurate surface creation that ArcGIS Geostatistical Analyst provides.”*

Paul Shanayda  
Ball State University—UCS/OGIS  
GIS Coordinator

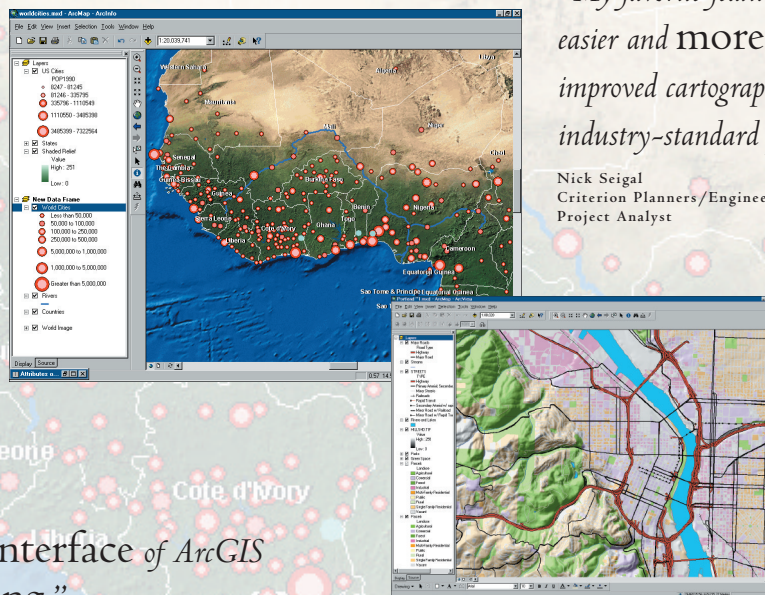
*“My favorite features of ArcGIS 8.1 are easier and more powerful feature editing, improved cartography, and the capability to use industry-standard programming environments.”*

Nick Seigal  
Criterion Planners/Engineers  
Project Analyst

*“When interpolating natural processes, such as geologic surfaces or groundwater flow, kriging is really the preferred*

*method. The inclusion of more spatial interpolative methods in ArcGIS is a huge feature. Now, to do powerful interpolations of data trends, ArcGIS users no longer have to deal with the preprocessing of data for export to another application. With Geostatistical Analyst, you get to adjust the interpolation methods and parameters and see a preview of the grid in real time as the changes are made in the wizard, so once the final methods and parameters are determined, the grid is created once as a layer.”*

Daniel M. Petrecca  
Langan Engineering and Environmental Services, Inc.  
Senior Staff Hydrogeologist/GIS



# ArcObjects

*“One of the more appealing characteristics of ArcGIS is the programmable object model. It allows us to use the ArcGIS features in our utility modeling applications and to extend ArcMap with additional functionality.”*

Christopher M. Palmer  
Utility Automation Integrators, Inc.  
Application Developer

*"ArcObjects™ is a solid technology  
that we can build on."*

Simon Biickert, M.Sc.  
INFORM-Network for Management Systems Limited  
Software Developer

*"ArcObjects is a great selling point for integrating GIS with anything on our client's desktop or Internet. ArcObjects is so much easier than AML, Avenue, or even the ArcInfo Open Development Environment."*

Margaret Herzog  
Foothill Engineering Consultants, Inc.  
GIS Coordinator/Civil Engineer

*“Using ArcObjects to extend ArcGIS applications or create new stand-alone applications is very attractive.”*

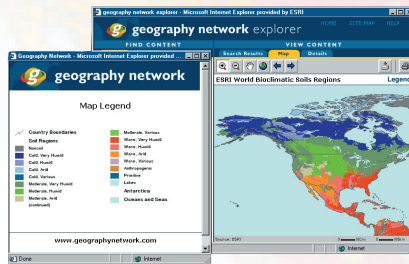
Gloria Boudreau  
NovaLIS Technologies  
Network/System Administrator

# ArcIMS, Geography Network

*“The ability to use ArcIMS® services is one of my favorite features in ArcGIS 8.1.”*

Glenn Hazelton  
Massachusetts Water Resources Authority  
GIS Coordinator

*“With the Geography  
Network<sup>SM</sup> I can  
access a variety of  
geospatial data and  
integrate this data into*



*ArcMap. I can then analyze my local data along with the data provided from the Geography Network. ArcMap also allows me to integrate data from any ArcIMS server for geospatial analysis with my local data. With the advent of the Geography Network, I now have a centralized location to search, explore, and access data from around the world on many different geographical subjects.”*

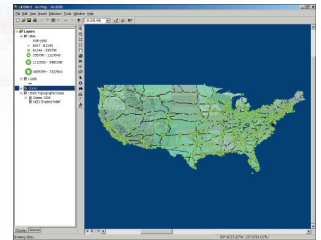
Terry Lehman  
Orbital Imaging Corporation  
Senior Principal Engineer

# Geodatabase, Data Models

*“The ability to perform direct editing of the geodatabase in ArcSDE is extremely appealing to us. Versioned editing and long transactions could fit very well into our map revision process.”*

Byron Taylor  
USDA Forest Service  
Development Unit Leader

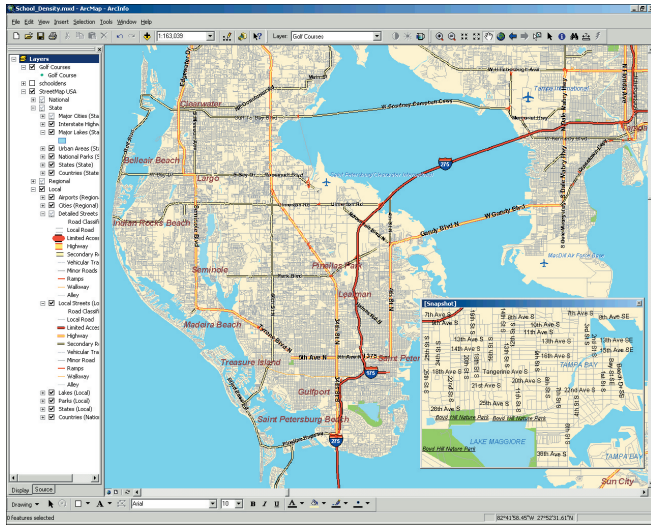
*“The fact that ArcGIS 8.1 adds support for routes, linear referencing, and dynamic segmentation is vital to our business. Some of the likable features include improved cartographic tools, custom symbols and line styles, layout rotation, geoprocessing wizards, and projection on the fly.”*



Timothy V. Gunn, P.E.  
New Hampshire Department of Transportation  
GIS Application Engineer



# ArcInfo 8.1



*"Overall, the easy-to-use interface combined with tremendous capabilities is remarkable. ArcInfo 8.1 is a great product. ArcMap™ puts the world and its data at your fingertips with connectivity to ArcSDE™, ArcIMS®, and the Geography Network™, as well as your own local data."*

Jeffery Nighbert  
Bureau of Land Management

*"The fact that I can access most of the power of ArcInfo™ 8.1 through an intuitive user interface is very appealing. I can get impressive results with minimal effort."*

Alan B. Smith  
Affiliated Computer Services, Inc.  
Senior GIS Programmer Analyst

*"My favorite features of ArcGIS 8.1 are projection on the fly, feature-linked annotation, and snapping across themes. Very cool!"*

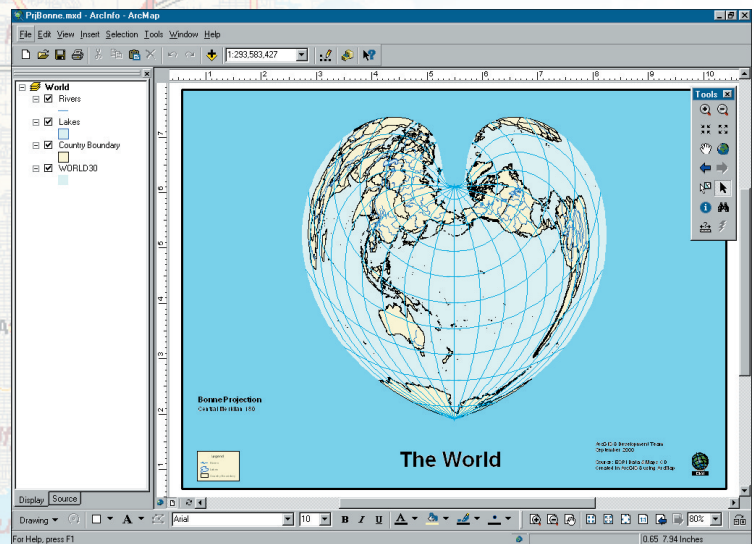
Mike Smith  
ABR, Inc., Environmental Research and Services  
GIS Specialist

*"The fact that ArcView® and ArcInfo are no longer dissimilar programs is a big plus. This makes it easier to program, learn, teach, and produce maps."*

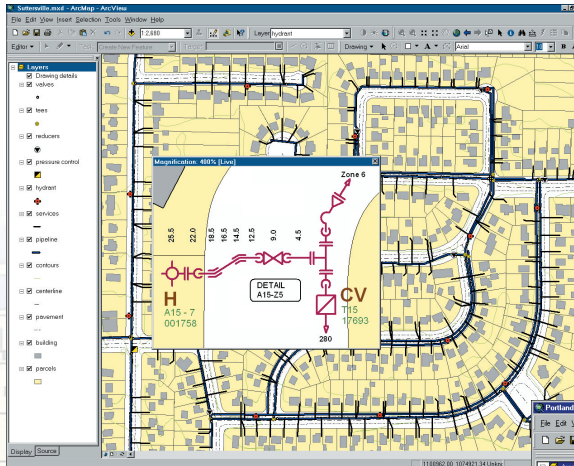
Brent Mainzinger  
The Sidwell Company  
Director, GIS Applications

*"The intuitive user interface makes ArcInfo accessible to all."*

Steve Evans  
Centre for Advanced Spatial Analysis (CASA), UCL, United Kingdom  
GIS Analyst

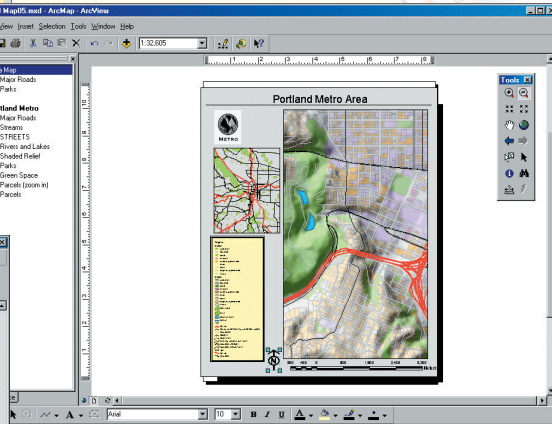
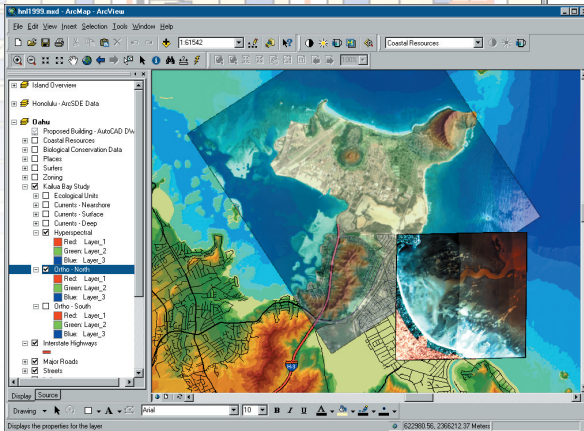


# ArcView 8.1



*“My favorite features of ArcView® 8.1 are the floating license option, the geocoding engine, and the integration of Internet data with my local data.”*

Larry Halweg, P.E.  
Los Angeles County Department of Public Works  
GIS Services Unit Head, Mapping & Property  
Management Division



*“Overall, ArcView 8.1 looks like a great product! ArcCatalog™ has a number of useful features including previews of geographic data, data cataloging, and automatic metadata creation.”*

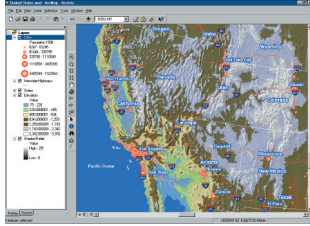
David L. Jordan, P.E.  
DBS&A, Inc.  
Program Manager

*“The cartographic tools in ArcView 8.1 have improved significantly. The number of options is mind-boggling.”*

Babak Negahban  
MapLogic Corporation  
President



# ArcMap, ArcCatalog, ArcToolbox



*"By far, ArcMap™ is the best part of ArcGIS. I appreciate the similar interface and programming environments of the two flagship software products from ESRI—ArcView and ArcInfo."*

James Price  
Mississippi Department of Marine Resources  
Senior Systems Administrator/GIS

*"The integration between the Data View and the Layout View in ArcMap is very appealing. I also like the delineation between ArcMap, ArcCatalog™, and ArcToolbox™. It is a very logical structure."*

Chris Green  
U.S. Department of Agriculture  
GIS Programmer

*"ArcCatalog has the ability to keep an active list of file locations, to drag and drop files between locations, and to preview data. I also like the Windows® look and feel and the ease of use of ArcMap."*

Steve Lewis  
NOAA National Marine Fisheries Service  
GIS Coordinator

*"The ability to manage metadata in ArcCatalog is most appealing. It not only allows you to create, edit, and save metadata with data, but it also allows you to export metadata in different formats. This is a very helpful feature for GIS professionals."*

Tsering Wangyal Shawa  
Princeton University  
Geographic Information Systems Librarian

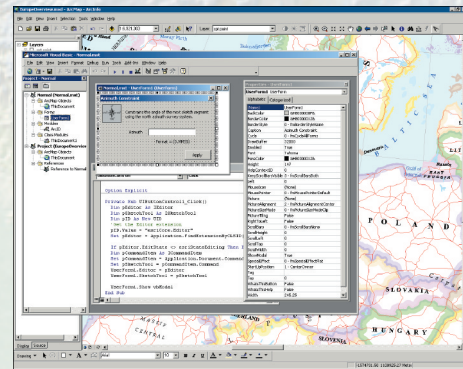
*"The graphical user interface and wizards of ArcToolbox are the most appealing part of ArcGIS 8.1. Batch processing of data conversions is a big time saver and extremely easy to use."*

Felicia Retiz  
Texas Natural Resources Information System  
GIS Analyst

## VBA, Customization

*"Combining ArcView and ArcInfo into one base code is great. Now we can extend ArcView in ways that were difficult before."*

Ben Ferguson  
Bluegrass GIS, Inc.  
Senior GIS Analyst



*"I like the integrated approach to the data and applications as well as the use of VBA—which is crucial!"*

Chris DeJager  
AMEC Technologies Limited, Canada  
Technical Architect

*"Programming with VBA and the simple drag and drop customization options are extremely appealing, not to mention the various file formats that are viewable through ArcInfo and ArcView 8.1."*

Jake Krall  
City of Waco  
GIS Analyst

*"The most appealing feature of ArcGIS is the replacement of Avenue™ and ARC Macro Language (AML™) with Visual Basic® for Applications. This change is overdue and will allow us to develop better tools for users."*

Scott McEachern  
The Omega Group  
GIS Developer



For more than 30 years ESRI has been helping people manage and analyze geographic information. ESRI offers a framework for implementing GIS in any organization with a seamless link from personal GIS on the desktop to enterprise-wide GIS client/server and data management systems. ESRI GIS solutions are flexible and can be customized to meet the needs of our users. ESRI is a full-service GIS company, ready to help you begin, grow, and build success with GIS.

## Corporate

### ESRI

380 New York Street  
Redlands, California  
92373-8100, USA  
Telephone: 909-793-2853  
Fax: 909-793-5953

For more information call  
your local reseller, or ESRI at

**1-800-447-9778**

(1-800-GIS-XPR T)

Send e-mail inquiries to

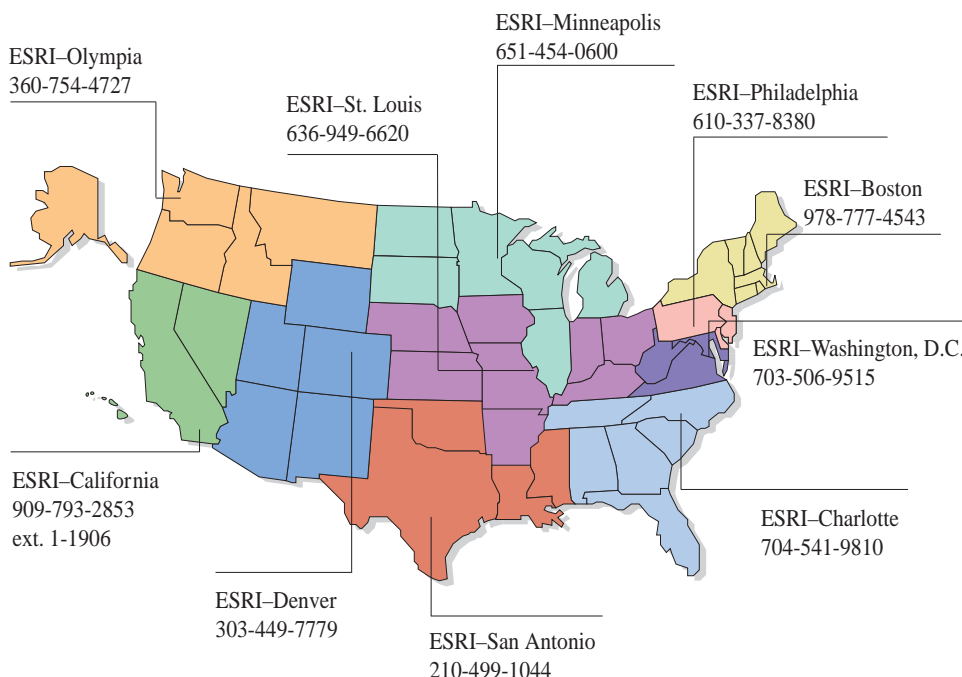
**info@esri.com**

Visit ESRI's Web page at

**www.esri.com**

Outside the United States,  
contact your local ESRI distributor.  
For the number of your distributor,  
call ESRI at 909-793-2853,  
ext. 1-1235,  
or visit our Web site at  
**www.esri.com/international**

## Regional Offices



## International Offices

Australia 61-39-882-6222	Germany and Switzerland 49-8166-677-0 41-1-360-2460	Italy 39-06-406-96-1	Singapore 65-742-8622
Belgium/Luxembourg 32-2-460-7480	Hong Kong 852-2730-6883	Korea 82-2-571-3161	Spain 34-91-559-4375
Bulgaria 359-2-560-871	Hungary 361-428-8040	Netherlands 31-10-217-0700	Sweden 46-23-755-400
Canada 416-441-6035	India 91-11-620-3802	Poland 48-22-825-9836	Thailand 66-2-678-0707
France 33-1-46-23-6060	Indonesia/Malaysia 62-21-570-7685 603-7874-9930	Portugal 351-2-1-781-6640	United Kingdom 44-1296-745-500
		Romania 40-1-231-13-81	Venezuela 58-212-285-1134

Copyright © 2001 ESRI. All rights reserved. ESRI, ArcView, ArcIMS, and the ESRI globe logo are trademarks of ESRI, registered in the United States and certain other countries; registration is pending in the European Community. ArcGIS, ArcInfo, ArcEditor, ArcMap, ArcSDE, ArcCatalog, ArcToolbox, ArcScene, 3D Analyst, Avenue, AML, the ArcGIS logo, and ArcObjects are trademarks and @esri.com, Geography Network, the Geography Network logo, and www.esri.com are service marks of ESRI. Microsoft is a registered trademark and the Microsoft Internet Explorer logo is a trademark of Microsoft Corporation. Other companies and products mentioned herein are trademarks or registered trademarks of their respective trademark owners.



No. GS-35F-5086H

Place ESRI business partner or distributor address here.