

ArcIMS®

Publish Maps, Data, and Metadata on the Web



ArcIMS®

Publish Maps, Data, and Metadata on the Web

What Is ArcIMS?

ESRI® ArcIMS® is the solution for delivering dynamic maps and GIS data and services via the Web. It provides a highly scalable framework for GIS Web publishing that meets the needs of corporate Intranets and the demands of worldwide Internet access. ArcIMS services can be used by a wide range of clients including custom Web applications, ArcGIS® Desktop, and mobile and wireless devices. Using ArcIMS, city and local governments, businesses, and other organizations worldwide publish, discover, and share geospatial information.

“ArcIMS is a versatile and comprehensive information tool to support the decision making process. Our ArcIMS application serves other city agencies and the general public in providing a one-stop mechanism for obtaining information with minimal time and effort.”

David Terukina
Senior Systems Analyst
City of Los Angeles Department of City Planning



ArcIMS can support a variety of clients.



“With ArcIMS, we were able to build an interactive Web mapping system that provides the customer with the capability to query, analyze, and create a customized view of a large range of geoscientific data. If required, a hard-copy map of that view can be created without requiring specialized GIS skills.”

Stephen Bandy
Manager, Geoscience Information Products
Geological Survey of Western Australia



ArcIMS is used by governments, businesses, and organizations worldwide.

How Is ArcIMS Used?

The following examples illustrate the main application functions of ArcIMS.

Focused application delivery—ArcIMS can be used to deliver GIS to numerous internal users or to external users on the Internet. ArcIMS provides data access and simple, focused applications to users through a Web browser.

Publishing for professional GIS users—Many organizations publish GIS data for GIS professionals both within and outside their organization. Such ArcIMS applications are focused on data sharing between GIS professionals. GIS professionals use the data in their GIS along with other information to accomplish many tasks.

Technology for GIS networks—GIS Web publishing with ArcIMS is often the initial step in the implementation of enterprise GIS. GIS organizations publish and deliver GIS data and services to a broad audience, often outside their department or organization. ArcIMS is important for building all the parts of a GIS network and in implementing GIS portals.



ArcIMS provides simple, focused applications through a Web browser.

Key Features

ArcIMS offers the following key features:

- **Easy to get started**—ArcIMS is easy to install and set up and can be used to rapidly build a site in a matter of minutes. ArcIMS samples and Site Starter applications make it simple to add rich functionality to your user experience.
- **GIS Web publishing capabilities**—ArcIMS includes Web publishing capabilities such as image rendering, feature streaming, data query, data extraction and downloading, geocoding, and metadata catalog services.
- **ArcGIS integration**—With no data conversion required, you can access all your GIS data where it resides. In addition, by using ArcIMS you can publish on the Web any ArcGIS map you have already created.
- **Ability to use and integrate data from multiple sources**—ArcIMS offers powerful data integration capabilities, making it possible for users to access your data and quickly and simply integrate it with data from many other Internet and local sources.
- **Support for a variety of clients**—ArcIMS allows you to serve mapping capabilities and data to a wide range of clients including lightweight, browser-based clients and full-featured GIS desktops.
- **Ability to deliver an online metadata repository**—ArcIMS Metadata Services can be used to create a central, online metadata repository that allows you to easily publish and browse metadata over the Internet.



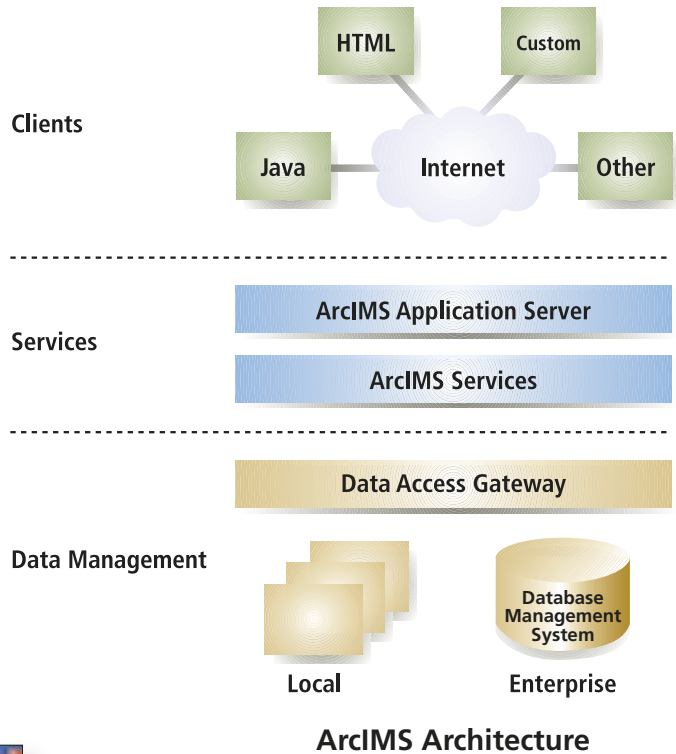
ArcIMS is the technology on which GIS portals are based.

Highly Scalable Architecture

Specifically designed to grow with an organization, ArcIMS is a completely scalable solution for publishing GIS data, maps, and applications. ArcIMS is designed so it can easily be scaled to handle the demands of everything from the smallest Intranet to a high-volume Internet site. To successfully power large-scale sites, ArcIMS incorporates proven technology developed from ESRI's many years of experience in providing Web-enabled GIS.



These examples show how ArcIMS is used in real estate, tourism, and scientific research.



Standards-Based Customization, Integration, and Communication

ArcIMS can be customized and extended using industry-standard Web development environments such as JSP, ASP, .NET, ColdFusion, and others. It can be integrated with other technologies in your organization to deliver a complete enterprise solution.

ArcIMS clients and servers communicate using ArcXML, which is a GIS extension to standard Extensible Markup Language (XML). ArcXML also offers an easy way to customize ArcIMS applications.

In addition, ArcIMS includes a Web map services (WMS) connector that adheres to Open Geospatial Consortium, Inc. (OGC) specifications. For more information on ESRI's commitment to interoperability and standards, visit www.esri.com/standards.

ESRI also offers the ArcIMS Data Delivery extension, which makes dissemination of data easy and open.

Secure Access to Map Services

ArcIMS supports secure hypertext transfer protocol and secure sockets layer protocol for managing the security of your Web site. In addition, ArcIMS performs user authentication for map services, allowing you to define which users have access to GIS data.

Also, when you use ArcIMS to author a Web site, you determine the GIS tools, services, and data that are available to users.

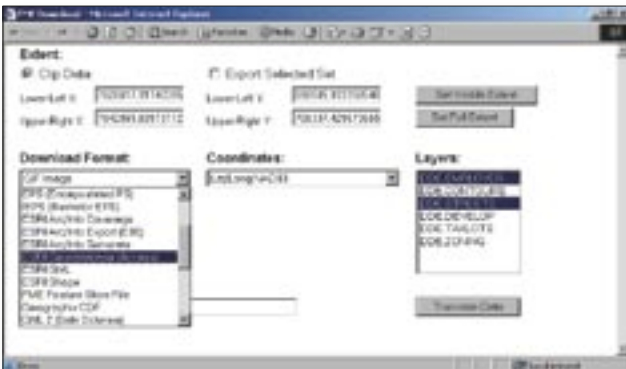
Add Even More Capabilities to Your Web Site With These ArcIMS Extensions

ArcIMS Route Server—Adds routing and geocoding to your Web site

You can elect to put routing capabilities on your Web site by adding the ArcIMS Route Server extension to your application. Users can quickly obtain point-to-point directions, locate optimal routes based on time and distance, and account for multiple stops along a route.



The ArcIMS Route Server extension allows you to add routing and geocoding to your Web site.



The ArcIMS Data Delivery extension allows you to export data in multiple formats.

ArcIMS Data Delivery

Enables GIS data publishing for ArcIMS. The ArcIMS Data Delivery extension enables users to easily select, export, and deliver data in multiple formats and projections from a centralized Internet server. This extension allows users and administrators to publish data in a wide variety of standard spatial formats used within the industry.

With ArcIMS Data Delivery, you can download data in 20 different formats using a simple, browser-based application; project features to more than 4,000 projections; and download extracted features in ZIP files.

“We were looking for a way to meet the challenges of creating a city government application that offered GIS centralization, data manipulation, and data accessibility. ArcIMS was the solution we needed to help move the city from a static view to a more dynamic model where rapidly changing information could be readily accessible.”

Hector Perez

Director of Data Technologies and Development
Calvin, Giordano & Associates, Inc.

Learn more about ArcIMS at

www.esri.com/arcims



For more than 35 years ESRI has been helping people manage and analyze geographic information. ESRI offers a framework for implementing GIS technology in any organization with a seamless link from personal GIS on the desktop to enterprisewide GIS client/server and data management systems. ESRI GIS solutions are flexible and can be customized to meet the needs of our users. ESRI is a full-service GIS company, ready to help you begin, grow, and build success with GIS.

Corporate

ESRI
380 New York Street
Redlands, California
92373-8100, USA
Telephone: 909-793-2853
Fax: 909-793-5953

For more information
on ESRI, call

1-800-447-9778

(1-800-GIS-XPRT)

or contact an ESRI value-added
reseller near you.

Send e-mail inquiries to

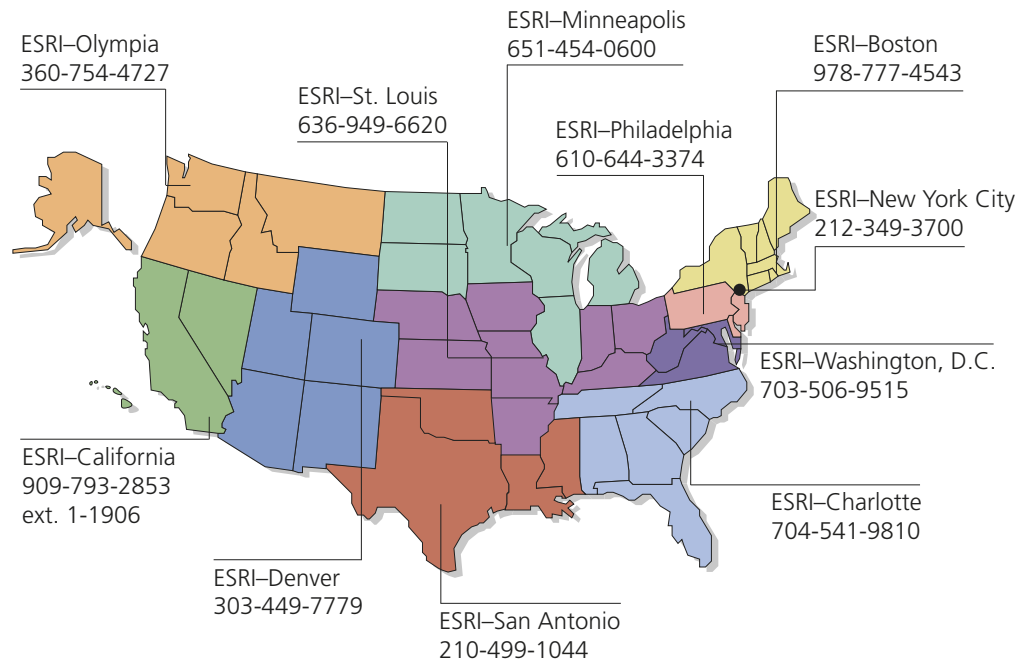
info@esri.com

Visit ESRI's Web page at

www.esri.com

Outside the United States,
contact your local ESRI distributor.
For the number of your distributor,
call ESRI at 909-793-2853,
ext. 1235,
or visit our Web site at
www.esri.com/international

Regional Offices



International Offices

Australia
www.esriaustralia.com.au

Finland
www.esri-finland.com

Italy
www.esriitalia.it

Romania
www.esriro.ro

Belgium/Luxembourg
www.esribelux.com

France
www.esrifrance.fr

Japan
www.esrij.com

Singapore
www.esrisa.com

Bulgaria
www.esribulgaria.com

Germany/Switzerland
www.esri-germany.de
www.esri-suisse.ch

Korea
www.esrikr.co.kr

Spain
www.esri-es.com

Canada
www.esricanada.com

Hungary
www.esrihu.hu

Netherlands
www.esrinl.com

Sweden
www.esri-sweden.com

China (Beijing)
www.esrichina-bj.cn

India
www.esriindia.com

Poland
www.esripolska.com.pl

Thailand
www.esrith.com

China (Hong Kong)
www.esrichina-hk.com

Indonesia/Malaysia
62-21-527-1023
603-7874-9930

Portugal
www.esri-portugal.pt

United Kingdom
www.esriuk.com

Venezuela
www.esriven.com

Place ESRI business partner or distributor address here.

Copyright © 2005 ESRI. All rights reserved. ESRI, ArcIMS, ArcMap, the ESRI globe logo, ArcInfo, ArcGIS, the ArcGIS logo, @esri.com, and www.esri.com, are trademarks, registered trademarks, or service marks of ESRI in the United States, the European Community, or certain other jurisdictions. Other companies and products mentioned herein are trademarks or registered trademarks of their respective trademark owners.



No. GS-35F-5086H