

## WMS Connector for ArcIMS 9.0 SP2

The WMS Connector is a Java Web Application that provides an Open GIS Consortium (OGC)-standard Web Map Service (WMS) interface to data served by ArcIMS Image and ArcMap Image Services. The connector receives OGC-standard WMS requests and converts them into ArcXML requests that are forwarded to the published ArcIMS services. The ArcXML responses are translated back into OGC standard responses and are returned to the requesting clients.

The supported requests with the WMS Connector are:

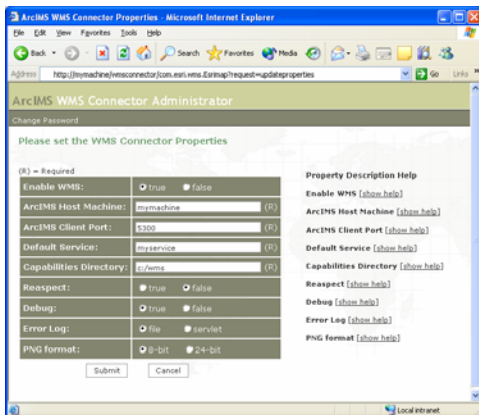
- GetCapabilities
- GetMap
- GetFeatureInfo

The connector does not support styled layer descriptors (SLD).

## What's new since ArcIMS 9.0

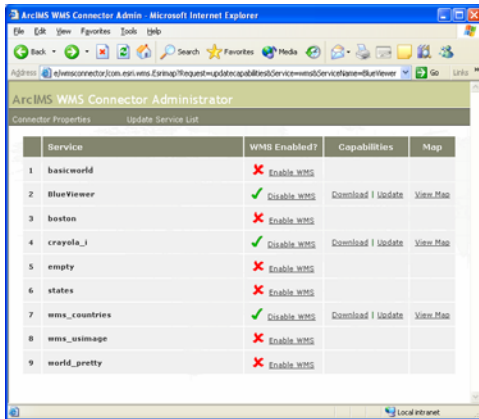
The following new features are included in the WMS Connector for ArcIMS 9.0 SP2:

- The WMS Connector has passed all OGC compliancy tests for WMS services with Image Services.
- The connector comes with a web-based Administration tool.



A WMS Connector Properties page allows you to set up or update the WMS Connector environment.

The Services List page allows you to enable ArcIMS Image and ArcMap Image Services for WMS, view service maps, and view and update capabilities files.



- ArcMap Image Services are supported with some limitations. The layer order cannot be changed and reaspect is always true.
- Capabilities files can be customized. Elements can be edited, added, or removed directly in the Capabilities files or in the associated style sheets.
- Formats for GetFeatureInfo responses can be customized in the associated style sheets.
- The connector has been internationalized.
- The documentation has been rewritten and enhanced. The documentation includes comprehensive instructions for administering a WMS site and detailed explanations of each of the requests.

## Supported platform configurations

The WMS Connector is supported on all ArcIMS 9.0 SP2 platform configurations for Windows, Solaris, Linux, HP, and AIX. The ESRI support site has a comprehensive list of system requirements and [supported configurations](#).

## Compatibility statement

The ArcIMS 9.0 SP2 WMS Connector cannot be used with earlier versions of ArcIMS, including ArcIMS 3.x, ArcIMS 4.x, ArcIMS 9.0, and ArcIMS 9.0 SP1. The following table summarizes compatibility between recent versions of ArcIMS and WMS Connectors.

WMS Connector version	ArcIMS 4.0.1	ArcIMS 9.0	ArcIMS 9.0 SP1	ArcIMS 9.0 SP2
4.0.1 WMS Connector	X			
WMS Connector 1.0 from the <a href="#">ESRI Interoperability Page</a>	X			
9.0 WMS Connector		X	X	X

9.0 SP2 WMS Connector				X
-----------------------	--	--	--	---

Existing WMS clients can use the ArcIMS 9.0 SP2 WMS Connector without making any changes except for a reference to a different URL.

## Deploying the WMS Connector

When you install ArcIMS 9.0 SP2, the WMS Connector application and documentation are installed. The WMS Connector application is a WAR file named **wmsconnector.war**.

- On Windows, the WAR file is located in the <ArcIMS Installation Directory>\ArcIMS\Connectors\wms\_connector directory.
- On UNIX, the WAR file is located in the <ArcIMS Installation Directory>/ArcIMS/Middleware/wms\_connector directory.

The WMS documentation is installed in the ArcIMS documentation directory.

- On Windows, the documentation is located in <ArcIMS Installation Directory>\Documentation\wms\_connector. For the SP2 release, this documentation is in a zip file. Instructions for unzipping this file are in a readme file in the same directory. Once the documentation is unzipped, click on wms\_reference.htm to view the WMS documentation.
- On UNIX and Linux, the documentation is located in <ArcIMS Installation Directory>/Documentation/wms\_connector. Click on wms\_reference.htm to view the WMS documentation.

The documentation includes instructions for deploying the WMS Connector WAR file. Unlike other ArcIMS applications such as the Metadata Explorer and Service Administrator, the WMS Connector application must be manually deployed for SP2. Deployment is covered in the chapter titled “Installing the WMS Connector,” and instructions are available for all supported configurations. See [System Requirements for ArcIMS](#) for supported platforms, Web servers, and servlet engines.

When you install the ArcIMS 9.0 SP2 WMS Connector, the ArcIMS 9.0 WMS Connector is **not** uninstalled or overwritten. If you have enabled the 9.0 version, you will have two WMS Connectors running on your site. One option is to leave both connectors active. You can also disable the ArcIMS 9.0 WMS Connector. Instructions and information about both options are available in the WMS documentation under the topic “WMS Connector Compatibility.”

## Known Issues

The following are known issues with the ArcIMS 9.0 SP2 WMS Connector.

*CQ00252122: Scale dependencies in Capabilities files are incorrect when using services in decimal degree units. This affects a layer’s ScaleHint in the Capabilities files.*

This problem has a workaround by updating the capabilities files style sheets. General information on the style sheets can be found in the WMS documentation under the topic “Administering the WMS Connector/Editing the XSL stylesheets.” Information for updating the style sheets for this problem can be found in KnowledgeBase Article 27903.

*CQ00251269: Characters are not escaped in a GetFeatureInfo response.*

If data returned from a getFeatureInfo request contains an "&", the response is a service exception:

"Exception in FeatureInfo reply. The entity name must immediately follow the '&' in the entity reference."

Other characters that may affect the output are “<”, “>”, single quotes, and double quotes.

*CQ00249836: Date fields are not formatted correctly in a GetFeatureInfo response for ArcMap Image Services.*

*CQ00249647: Spaces cannot be included in a field name.*

If a field name contains a space, the following error message is returned:

Exception in FeatureInfo reply. Attribute name "<field>" must be followed by the '=' character.

The workaround is to remove the space in the field name. Spaces are valid in field values.

*CQ00249589: Need to remove charset from content-type in the header*

The response HTTP header contains a content-type that may include a charset parameter when images are returned. The servlet engine that renders the pages controls this parameter. The same application deployed on two different servlet engines can send back different content-types, some with a charset parameter attached, some without. The following example is a header returned from the Tomcat servlet engine. The charset value is added by Tomcat and is not removed by the WMS Connector.

```
<content-type>image/png;charset=ISO-8859-1</content-type>
```

*CQ00250012: WMS Admin: Need a warning message for custom projections*

When an ArcIMS service uses a custom projection string, the string is ignored when the service is enabled for WMS. Instead, the capabilities files get created with a default 4326 SRS code (WGS84). During WMS administration, you are not notified of this conversion.