



ArcIMS®
Mapping and GIS for the Internet



ArcIMS®

Mapping and GIS for the Internet

ArcIMS® is the solution for distributing mapping and geographic information system (GIS) data and services on the Web. Whether you are operating strictly within your organization's Intranet or sharing information with hundreds of thousands of people over the Internet, you can use ArcIMS to distribute geographic data to many concurrent users and allow them to do location-based analyses. ArcIMS is a powerful, scalable, standards-based tool that lets you quickly design and manage Internet mapping services. Using the power of ArcIMS technology, businesses, governments, and organizations throughout the world are providing a wide range of location-based data and services over the Web including real-time traffic information, store location maps, city and county land use information, home buyer services, and much more.

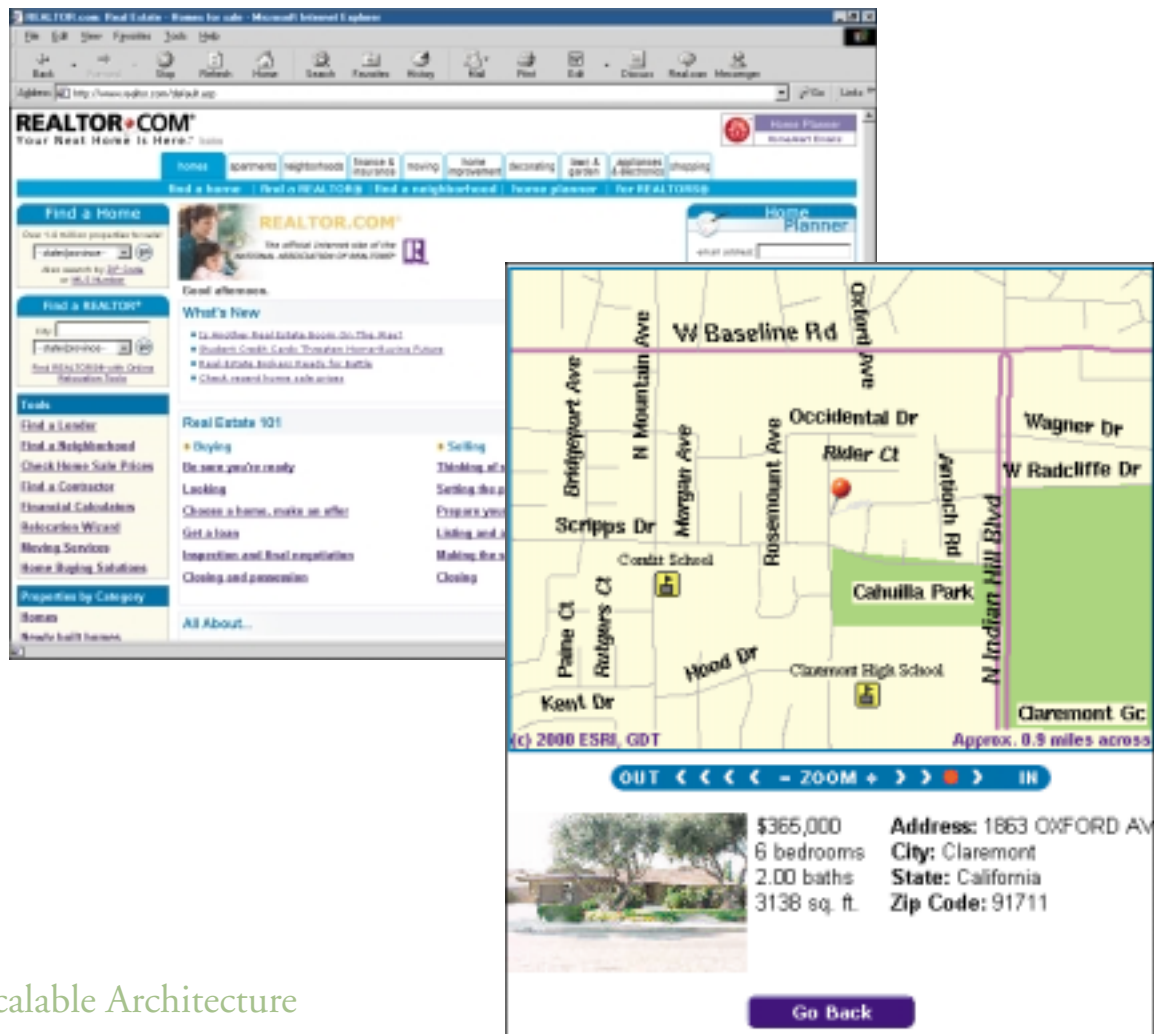


Integrate Data from Multiple Sources

ArcIMS offers unique and powerful data integration capabilities, making it possible for users to access your data, then quickly and simply integrate it with data from many other Internet and local sources.

Wide Range of GIS Capabilities

ArcIMS lets you incorporate a variety of GIS capabilities into your Web site. You can offer image rendering, feature streaming, data extraction, geocoding, and the ability to perform both spatial and attribute queries on underlying data.



Highly Scalable Architecture

Specifically designed to grow with an organization, ArcIMS is a completely scalable solution for publishing GIS data, maps, and applications. ArcIMS is designed so it can easily be scaled to handle the demands of everything from the smallest Intranet to a high-volume Internet site. To successfully power large-scale sites, ArcIMS incorporates proven technology developed from ESRI's many years of experience in providing Web-enabled GIS. ArcIMS integrates with a variety of Web technologies and supports Windows as well as UNIX® platforms.

Standards-Based Communication

ArcIMS clients and servers communicate using ArcXML, which is a GIS extension to standard Extensible Markup Language (XML). ArcXML also offers an easy yet powerful way to customize ArcIMS applications.

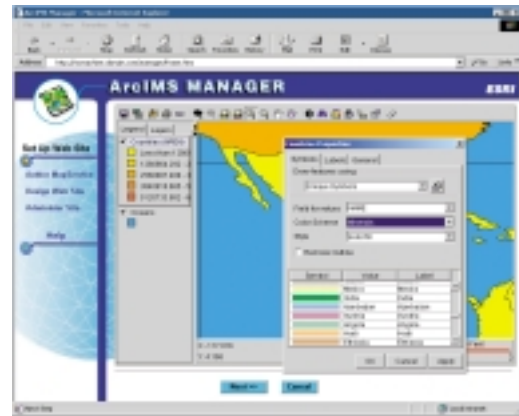


Support for a Wide Range of Clients

ArcIMS allows you to select the client that best suits your needs, from wireless appliances, such as cellular phones and personal digital assistants, to lightweight browser-based clients, to a full-featured GIS desktop client. To help you optimize performance, ArcIMS comes with both HTML and Java™ client viewers.

Easy-to-Use Framework

ArcIMS helps you to get up and running quickly with the easy-to-use ArcIMS Manager. ArcIMS Manager is a wizard-driven application that walks you through the entire Web site creation process.

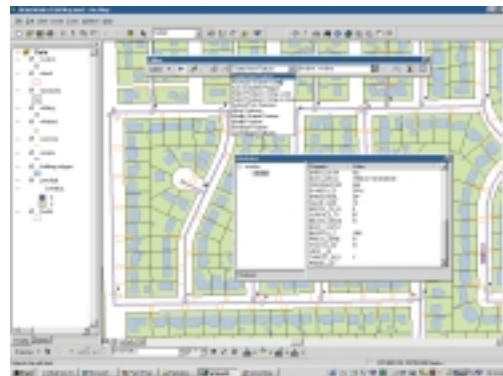


The Internet-Enabling Technology for ArcGIS

ArcIMS works seamlessly with ArcGIS™, ESRI's comprehensive, integrated GIS solution. ArcGIS Desktop products, which include ArcView®, ArcEditor™, and ArcInfo™, can connect to the map and feature services provided by ArcIMS and use ArcIMS as a data source. Once the data is accessed, the user can combine it with data from other sources and apply the advanced GIS capabilities offered with ArcGIS. Learn more about ArcGIS by visiting www.esri.com/arcgis.

Foundation for the Geography Network

The power of ArcIMS has made possible the creation of the Geography Network™, which is a collaborative system that connects users with data and services via the Internet. Through the Geography Network, users can publish their own data and map services, search for specific geographic content, and use services and applications built by other participants. To learn more about the Geography Network, visit www.geographynetwork.com.

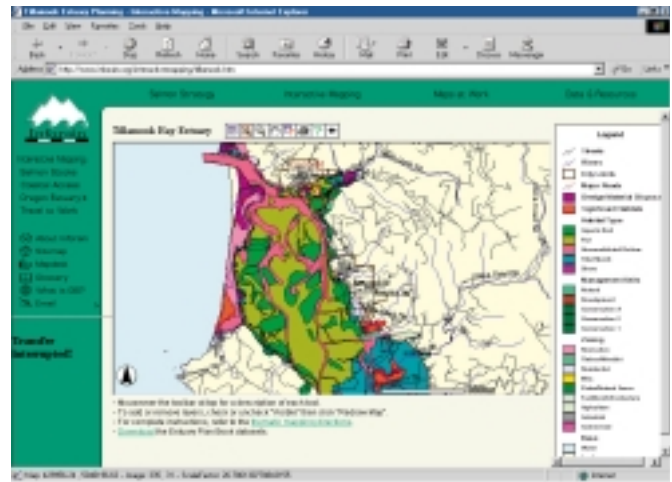


Use ArcIMS to Provide Location Services

ArcIMS provides a diverse set of mapping, location analysis, and routing capabilities for location service developers. All around the world, ArcIMS is allowing personnel in the field, away from their office desks, to use wireless devices to access their corporate database and link to information relevant to their current location. Service providers are using ArcIMS to deliver maps to cell phones with routing and proximity search functions, provide personalized traffic reports and alerts, develop applications for fleet management and dispatching, and much more.

Helpful Templates

ArcIMS includes a set of lightweight, highly customizable templates and sample applications designed to help you get your site up and running and provide your users with a means of quickly finding the information they need. The templates are simple to install straight out of the box, and no additional software is required to incorporate them into your Web site.



Secure Access to Map Services

ArcIMS supports Secure HyperText Transport Protocol (S-HTTP) and Secure Sockets Layer (SSL) protocol for managing the security of your Web site. In addition, ArcIMS performs user authentication for map services, allowing you to define which users have access to GIS data. Also, when you use ArcIMS to author a Web site, you determine the GIS tools, services, and data that are available to users.





For more than 30 years ESRI has been helping people manage and analyze geographic information. ESRI offers a framework for implementing GIS in any organization with a seamless link from personal GIS on the desktop to enterprisewide GIS client/server and data management systems. ESRI® GIS solutions are flexible and can be customized to meet the needs of our users. ESRI is a full-service GIS company, ready to help you begin, grow, and build success with GIS.

Corporate

ESRI
380 New York Street
Redlands, California
92373-8100, USA
Telephone: 909-793-2853
Fax: 909-793-5953

For more information
call your local reseller, or ESRI at

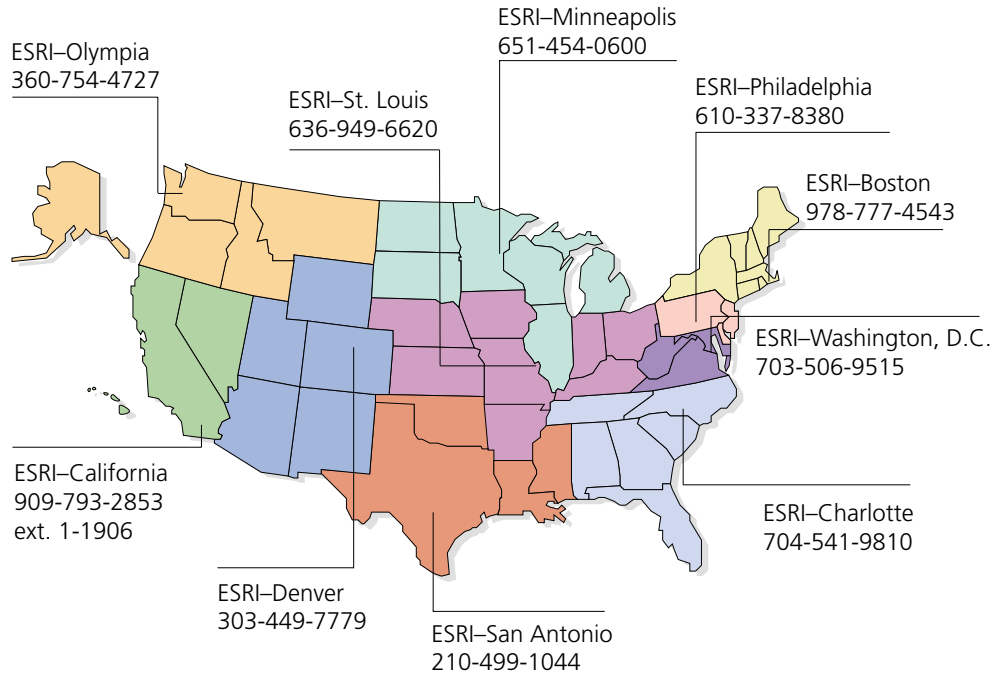
1-800-447-9778
(1-800-GIS-XPRT)

Send e-mail inquiries to
info@esri.com

Visit ESRI's Web page at
www.esri.com

Outside the United States,
contact your local ESRI distributor.
For the number of your distributor,
call ESRI at 909-793-2853,
ext. 1-1235,
or visit our Web site at
www.esri.com/international

Regional Offices



International Offices

Australia 61-39-882-6222	Germany and Switzerland 49-8166-677-0 41-1-360-2460	Italy 39-06-406-96-1	Singapore 65-742-8622
Belgium/Luxembourg 32-2-460-7480	Hong Kong 852-2730-6883	Korea 82-2-571-3161	Spain 34-91-559-4375
Bulgaria 359-2-560-871	Hungary 361-428-8040	Netherlands 31-10-217-0700	Sweden 46-23-755-400
Canada 416-441-6035	India 91-11-620-3802	Poland 48-22-825-9836	Thailand 66-2-678-0707
France 33-1-46-23-6060	Indonesia and Malaysia 62-21-570-7685 603-7874-9930	Portugal 351-2-1-781-6640	United Kingdom 44-1296-745-500
		Romania 40-1-231-13-81	Venezuela 58-212-285-1134

Copyright © 2001 ESRI. All rights reserved. ESRI, ArcView, ArcIMS, and the ESRI globe logo are trademarks of ESRI, registered in the United States and certain other countries; registration is pending in the European Community. ArcGIS, GIS by ESRI, the ArcIMS logo, ArcEditor, and ArcInfo are trademarks and Geography Network, the Geography Network logo, www.geographynetwork.com, @esri.com, and www.esri.com are service marks of ESRI. Microsoft and the Windows logo are registered trademarks and the Microsoft Internet Explorer logo is a trademark of Microsoft Corporation. Compaq is a registered trademark and iPAQ is a trademark of Compaq. Other companies and products mentioned herein are trademarks or registered trademarks of their respective trademark owners.



No. GS-35F-5086H

Place ESRI business partner or distributor address here.