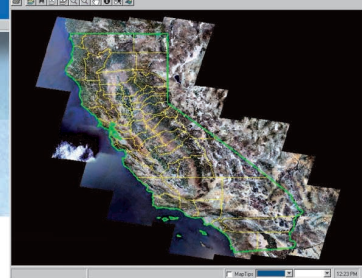
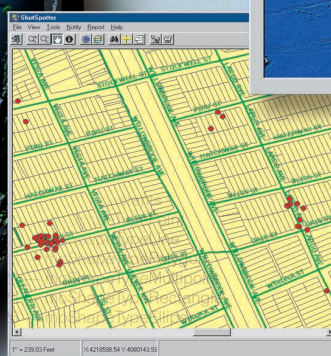
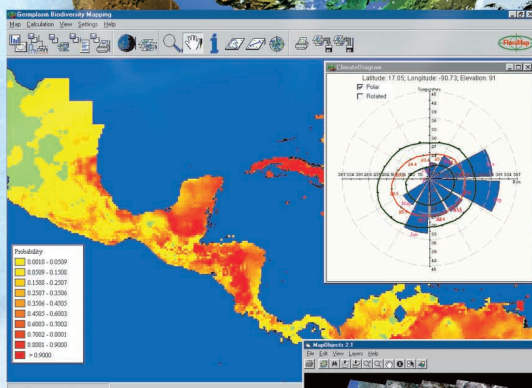
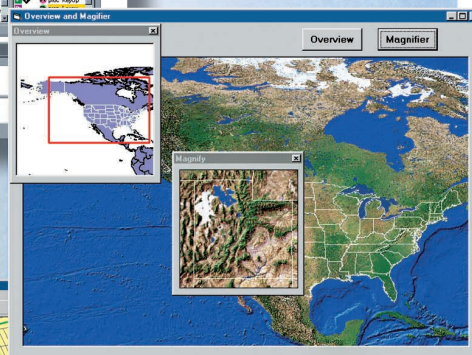
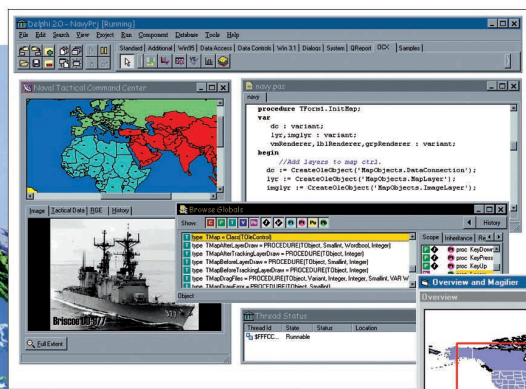


tem (index as Variant) as Point
 (as Double, deltaY as Double)
 Remove (index as Long)
 Reverse
 (index as Long, point as Point)
 as Double, yArray() as Double,
 s), [measureArray() as Double])
 extent as Rectangle)) as Object
 extent as Rectangle)) as Object

extent as Rectangle)) as Object
 o (shape as Object) as Double
 gs (shape as Object) as Points
 extent as Rectangle)) as Object
 ly Measures (factor as Double,
 (as Double, deltaY as Double)
 set Measures (offset as Double,
 double, end as Double)
 e (location as Point)
 (measure as Double)
 start as Double
 Self Measures
 extent as Rectangle)) as Object



Address (address as String) as
 Boolean

Name as String,
 (ants) as Boolean
 sField as String,
 uTableName as

Stand
 o
 (cre

Ge
 o
 (cre

MapObjects®

Embeddable Mapping and GIS Components
 for Application Developers



MapObjects®

Embeddable Mapping and GIS Components for Application Developers

With MapObjects® software, developers can create applications that have dynamic, interactive maps that have geographic information system (GIS) capabilities. MapObjects gives developers a powerful collection of mapping components that can be plugged into many standard development environments. With nearly 50 ActiveX® automation objects, MapObjects provides developers with all the tools they need to build customized mapping and GIS applications.

Key features of MapObjects include the following

Extensive Data Support

MapObjects supports a wide variety of data sources such as

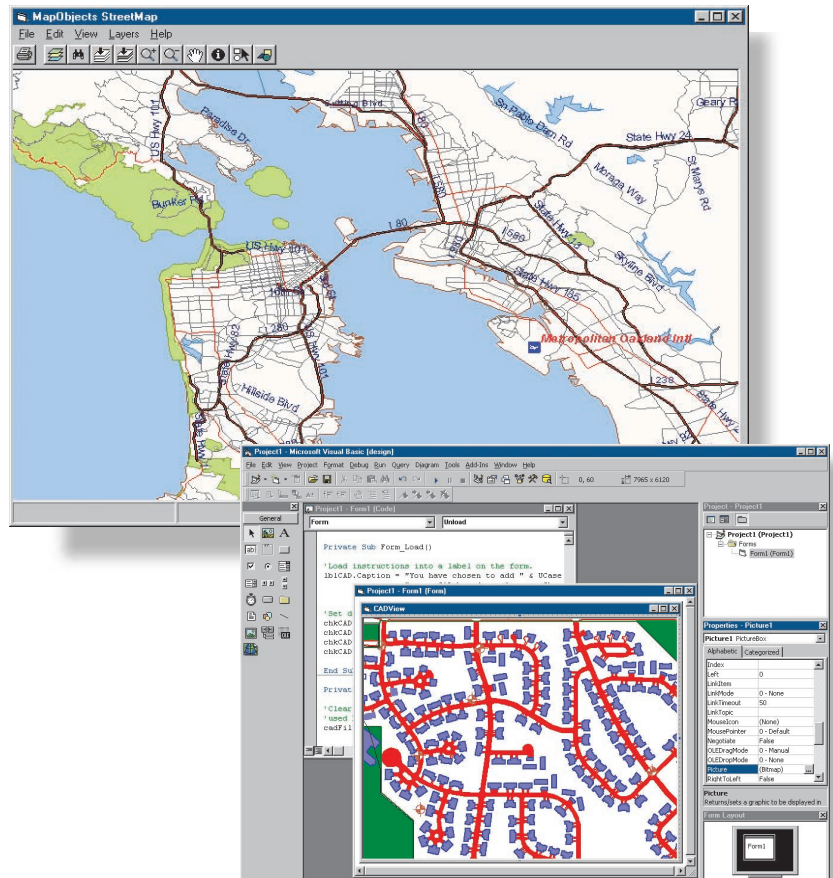
- Standard GIS formats—ArcInfo™ coverages, ESRI® shapefiles, and ESRI GRID
- Computer-aided design (CAD) formats (DGN, DXF, and DWG), CAD world files, and AutoCAD® 2000 DWG files
- Access to external databases through ActiveX Data Objects (ADO), Data Access Objects (DAO), and Open Database Connectivity (ODBC)
- Image catalogs as well as a variety of image formats such as GeoTIFF, TIFF, JPEG, GIF, ERDAS®, and MrSID™
- ESRI's ArcView® StreetMap™ for geocoding
- ArcSDE™ (ESRI's spatial database engine) databases
- Common military formats such as Vector Product Format (VPF) and ASRP/USRP

Advanced Data Handling

MapObjects provides powerful spatial and attribute filters to optimize performance. As an option, developers can access the ArcSDE application programming interface (API) directly from MapObjects applications. MapObjects also supports image transparency, display, and output, as well as the rotation of both vector and raster data layers.

On-the-Fly Projection

MapObjects users can quickly combine data from any projection into a common projection for viewing and analysis. In addition, any map layer can be exported into a new projection. To optimize your ability to create a wide variety of projections in a minimal amount of time, MapObjects is now integrated with ESRI's ArcInfo projection engine.





Sophisticated Geocoding Capabilities

MapObjects lets you do quick and accurate address matching including international addresses and reject processing. With StreetMap support, you can read, display, and geocode a street address from the highly compressed StreetMap database. StreetMap files cover the entire United States and include features such as local landmarks, streets, parks, and water bodies.

Global Positioning System Management

MapObjects supports dynamic tracking for points, lines, polygons, rectangles, and ellipses, making it easy to manage global positioning system (GPS) activities.

Run-Time Deployment Utility

Once you have successfully built your application, deployment becomes the critical factor. The MapObjects run-time deployment utility helps you to distribute your applications easily and efficiently.

Versioning Capabilities

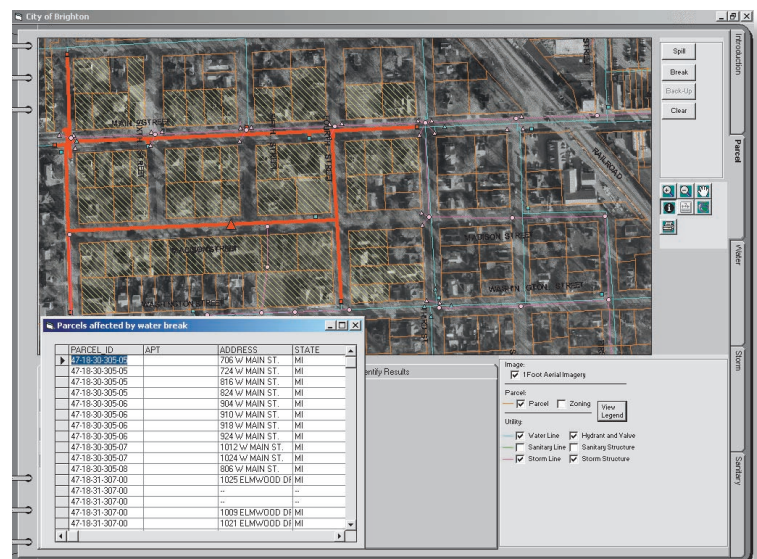
MapObjects supports versioning for ArcSDE layers; it can connect to any ArcSDE version and allow you to view it. In addition, you can identify and select versions based on version names.

Helpful Controls

MapObjects offers a legend and scale bar control, including source code, designed to make it easier for you to develop your applications. These are based on the same controls that are used in ArcExplorer™ software, ESRI's GIS data browser distributed free of charge.

“MapObjects provides us with the GIS power we need for our mission-critical Public Safety systems.”

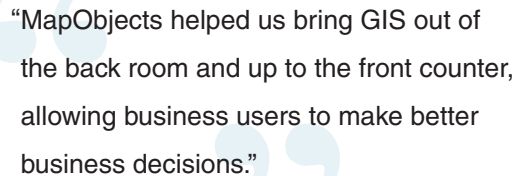
Scott Meehan
 Geo911, Inc.

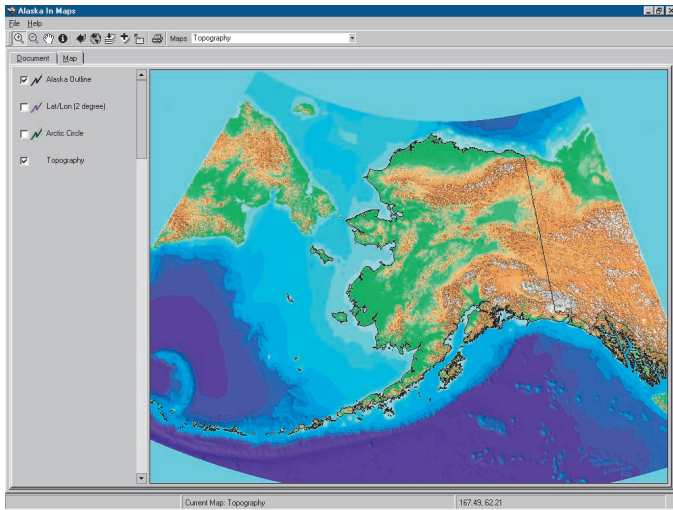


MapObjects has built-in compatibility with ESRI's ArcIMS® Web connectivity middleware. This means you can use MapObjects to put dynamic, customizable maps on the Internet via the ArcIMS technology.

MapObjects is built on the Microsoft ActiveX architecture, which allows robust software integration in desktop computing. The MapObjects ActiveX control can be plugged into a wide variety of development frameworks including Visual Basic, Visual Basic for Applications (VBA), Visual C++®, Delphi®, Borland® C++ Builder, Visual FoxPro®, and PowerBuilder®.

MapObjects can be used with any development environment that supports custom controls. It requires a 32-bit Intel®-based Windows® operating system such as Windows 95/98/Me/NT 4.0/2000.





“MapObjects was implemented by a team that knew what it was doing.”

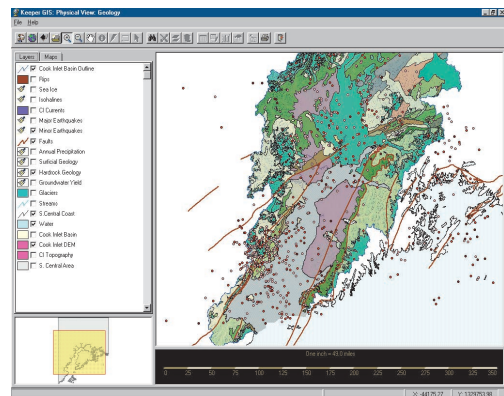
Ralph Kimball
Intelligent Enterprise*

*“Spatial Enabling Your Data Warehouse,”
Intelligent Enterprise, p. 26, January 1, 2001.

Plenty of Resources to Help You Get Started Quickly

MapObjects includes a large collection of sample applications and source code that enable you to begin building applications immediately. MapObjects software's robust online help includes many examples that you can cut and paste directly into your applications. MapObjects also comes with excellent printed references including *Building Applications with MapObjects*, *Getting Started with MapObjects*, and *MapObjects Programmer's Reference*. Also, ESRI's Developer Connection pages at www.esri.com/devconnection offer the most up-to-date resources for technical topics, downloads, samples, and online discussions.

MapObjects also includes in-the-box *ESRI Data & Maps*, a multivolume CD-ROM collection that contains more than 4 GB of ready-to-use data. This valuable resource consists of data for the entire world as well as detailed data for the United States.



Download a Free Evaluation Version of MapObjects

We invite you to try out MapObjects by downloading a 90-day evaluation version from **www.esri.com/mapobjects**.



For more than 30 years ESRI has been helping people manage and analyze geographic information. ESRI offers a framework for implementing GIS in any organization with a seamless link from personal GIS on the desktop to enterprisewide GIS client/server and data management systems. ESRI GIS solutions are flexible and can be customized to meet the needs of our users. ESRI is a full-service GIS company, ready to help you begin, grow, and build success with GIS.

Corporate

ESRI

380 New York Street
Redlands, California
92373-8100, USA

Telephone: 909-793-2853

Fax: 909-793-5953

For more information
call your local reseller, or ESRI at

1-800-447-9778

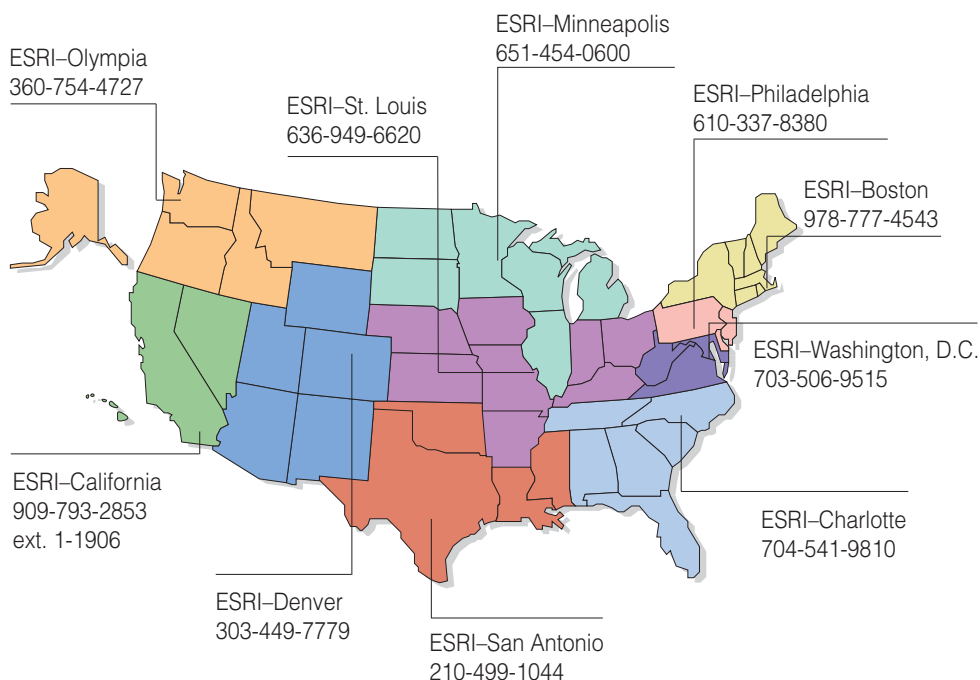
(1-800-GIS-XPRT)

Send e-mail inquiries to
info@esri.com

Visit ESRI's Web page at
www.esri.com

Outside the United States,
contact your local ESRI distributor.
For the number of your distributor,
call ESRI at 909-793-2853,
ext. 1-1235,
or visit our Web site at
www.esri.com/international

Regional Offices



International Offices

Australia 61-39-882-6222	Germany and Switzerland 49-8166-677-0 41-1-360-2460	Italy 39-06-406-96-1	Singapore 65-742-8622
Belgium/Luxembourg 32-2-460-7480	Hong Kong 852-2730-6883	Korea 82-2-571-3161	Spain 34-91-559-4375
Bulgaria 359-2-560-871	Hungary 361-428-8040	Netherlands 31-10-217-0700	Sweden 46-23-755-400
Canada 416-441-6035	India 91-11-620-3802	Poland 48-22-825-9836	Thailand 66-2-678-0707
France 33-1-46-23-6060	Indonesia and Malaysia 62-21-570-7685 603-7874-9930	Portugal 351-2-1-781-6640	United Kingdom 44-1296-745-500
		Romania 40-1-231-13-81	Venezuela 58-212-285-1134

Copyright © 2001 ESRI. All rights reserved. ESRI, MapObjects, ArcView, ArcIMS, and the ESRI globe logo are trademarks of ESRI, registered in the United States and certain other countries; registration is pending in the European Community. StreetMap, ArcSDE, ArcInfo, the MapObjects logo, and ArcExplorer are trademarks and @esri.com and www.esri.com are service marks of ESRI. Other companies and products mentioned herein are trademarks or registered trademarks of their respective trademark owners.



No. GS-35F-5086H

Place ESRI business partner or distributor address here.