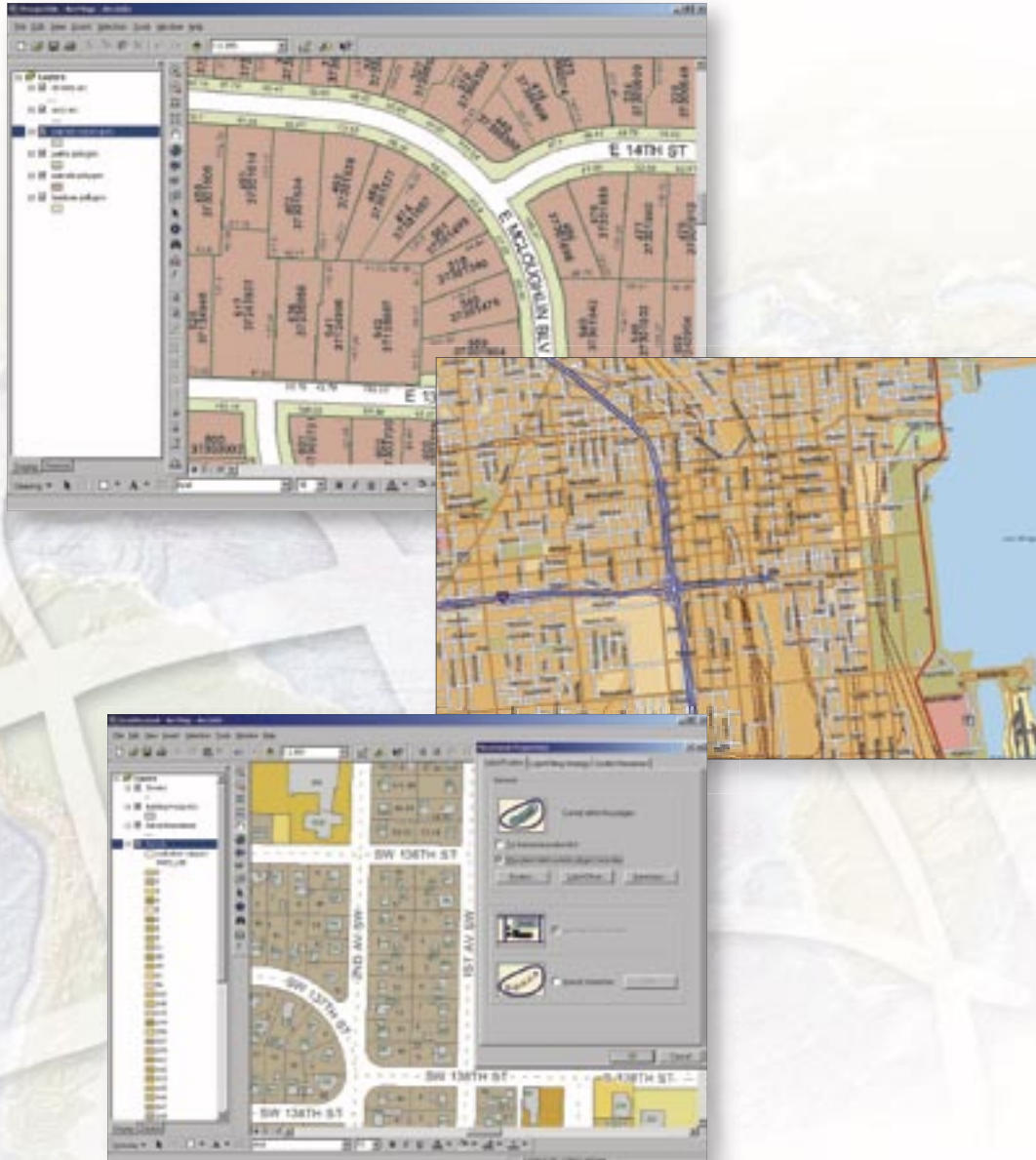


Maplex for ArcGIS®

Advanced Cartographic Text Placement and Labeling



Maplex for ArcGIS

Advanced Cartographic Text Placement and Labeling



Maplex for ArcGIS is used to create an atlas page. Labels are rotated with the graticule, and some labels are automatically stacked and abbreviated.

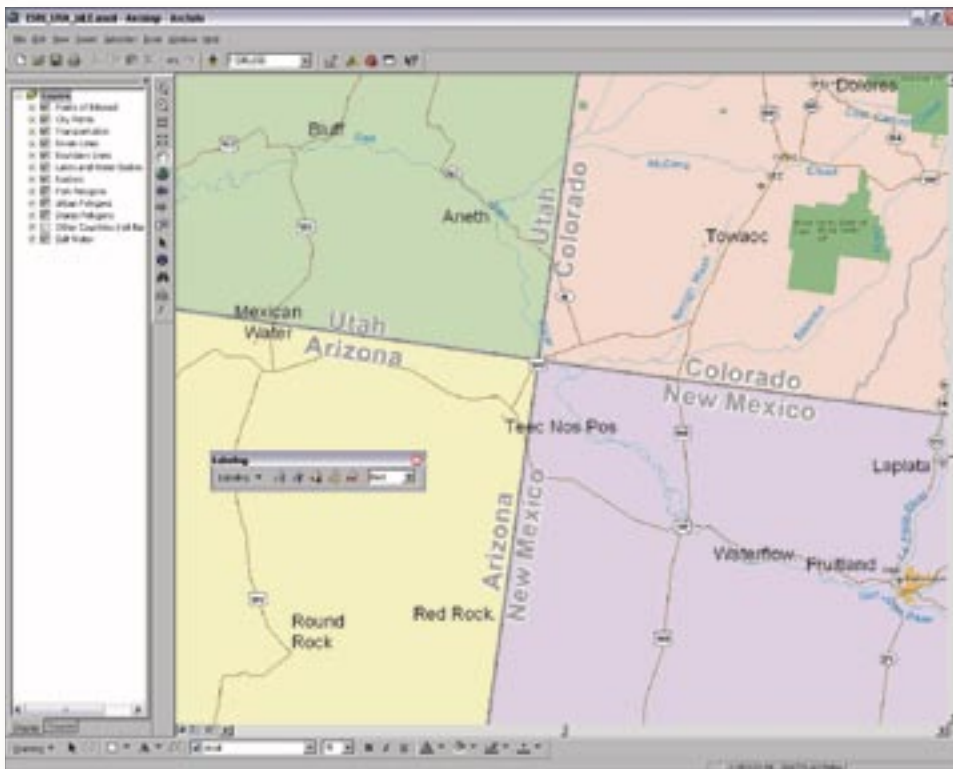
Maplex for ArcGIS provides an easy-to-use interface that enables users to

- Place more and better labels.
- Reduce manual editing time using intelligent annotation placement.
- Produce clearer maps that better communicate findings.

ESRI® Maplex for ArcGIS® is an advanced cartographic text placement extension for ArcView®, ArcEditor™, and ArcInfo®. Using a comprehensive set of placement options, Maplex for ArcGIS automatically positions text to a high cartographic standard. Maplex for ArcGIS generates clear, well-placed labels that minimize (or eliminate) the need for manual editing. The text is placed quickly, without overlap, without ambiguity, and with the best aesthetic quality, reducing map production time and costs.



Advanced placement properties enable you to set how labels are placed on the map. For example, for a polygon feature the label could be placed curved with the polygon, but if the text does not fit then various strategies could be tried such as stacking the text, reducing font height, abbreviating text, overrunning the boundary, or placing the text entirely outside the polygon feature.



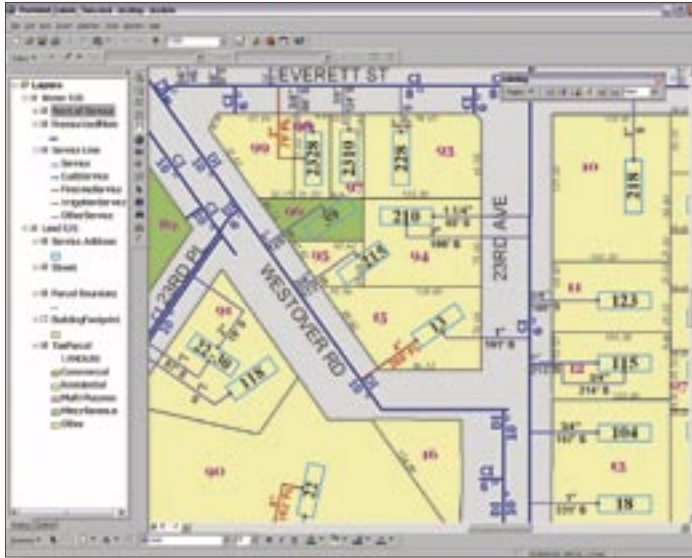
A High-Quality Automated Text Placement Extension for ArcGIS

Maplex for ArcGIS provides your organization with the most advanced, flexible text placement and cartographic design software possible, which can substantially reduce cartographic production time. From its intuitive graphical user interface to its powerful conflict resolution capabilities, Maplex for ArcGIS makes it easier than ever to create labels and symbols for your map features.

Use Maplex for ArcGIS to create a map with stacked boundary labels between adjacent polygons.

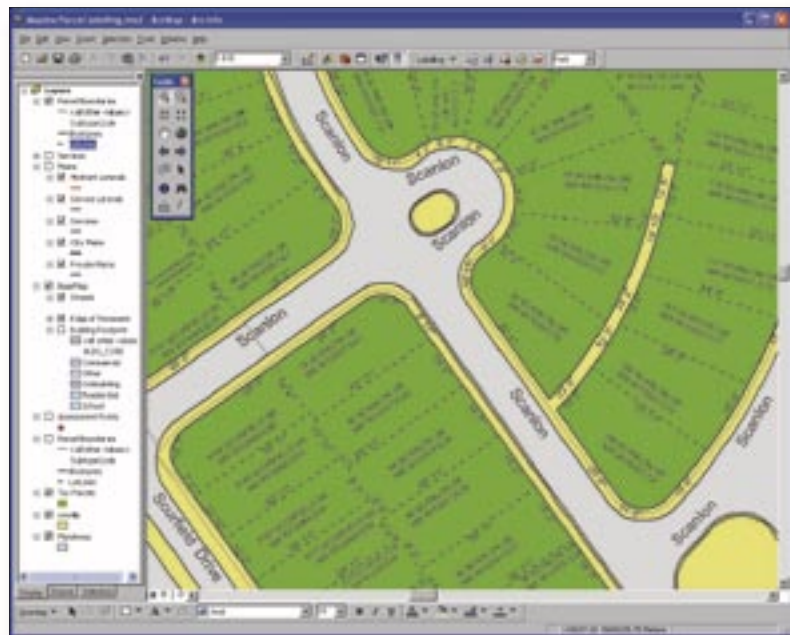
Why Use Maplex for ArcGIS?

Maplex for ArcGIS gives users greater control over how labels are placed in relation to their features and how they interact with other labels on the map. This not only provides higher quality map labeling but also reduces the time spent fixing or editing labeling mistakes.



Automated text placement with Maplex for ArcGIS makes it easy to design and publish maps with complex labeling.

With Maplex for ArcGIS, users have greater control over where labels are placed on their maps.



Who Will Use Maplex for ArcGIS?

All software users who produce high-quality GIS-based cartography will want Maplex for ArcGIS. Industries that benefit from Maplex for ArcGIS include professional cartographers, forest analysts, business demographers, geologists, and municipal mapping professionals.

Use Maplex for ArcGIS to Produce

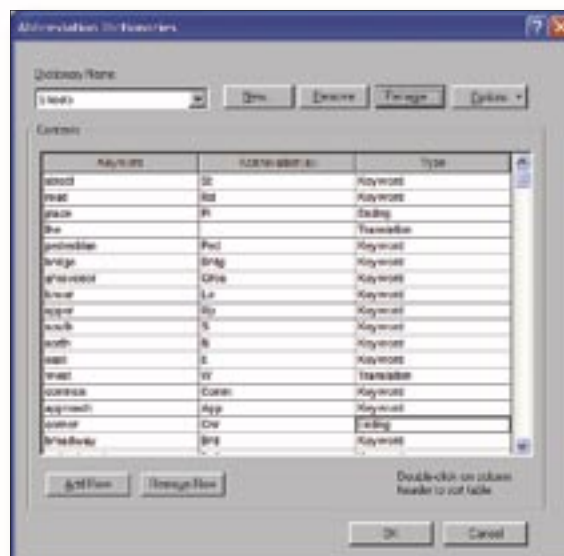
- Street Maps (U.S. and European styles)
- Road and Town Atlases
- Parcel Maps
- Nautical and Aeronautical Charts
- Utility Maps
- Oil and Gas Maps

Maplex for ArcGIS is designed for ease of use and allows new users to get started quickly. Tightly integrated with the ArcGIS Desktop labeling environment, Maplex for ArcGIS provides a consistent user experience. The advanced placement parameters of Maplex for ArcGIS are organized into easy-to-use groups that deal with label positioning, fitting strategies, and conflict resolution.

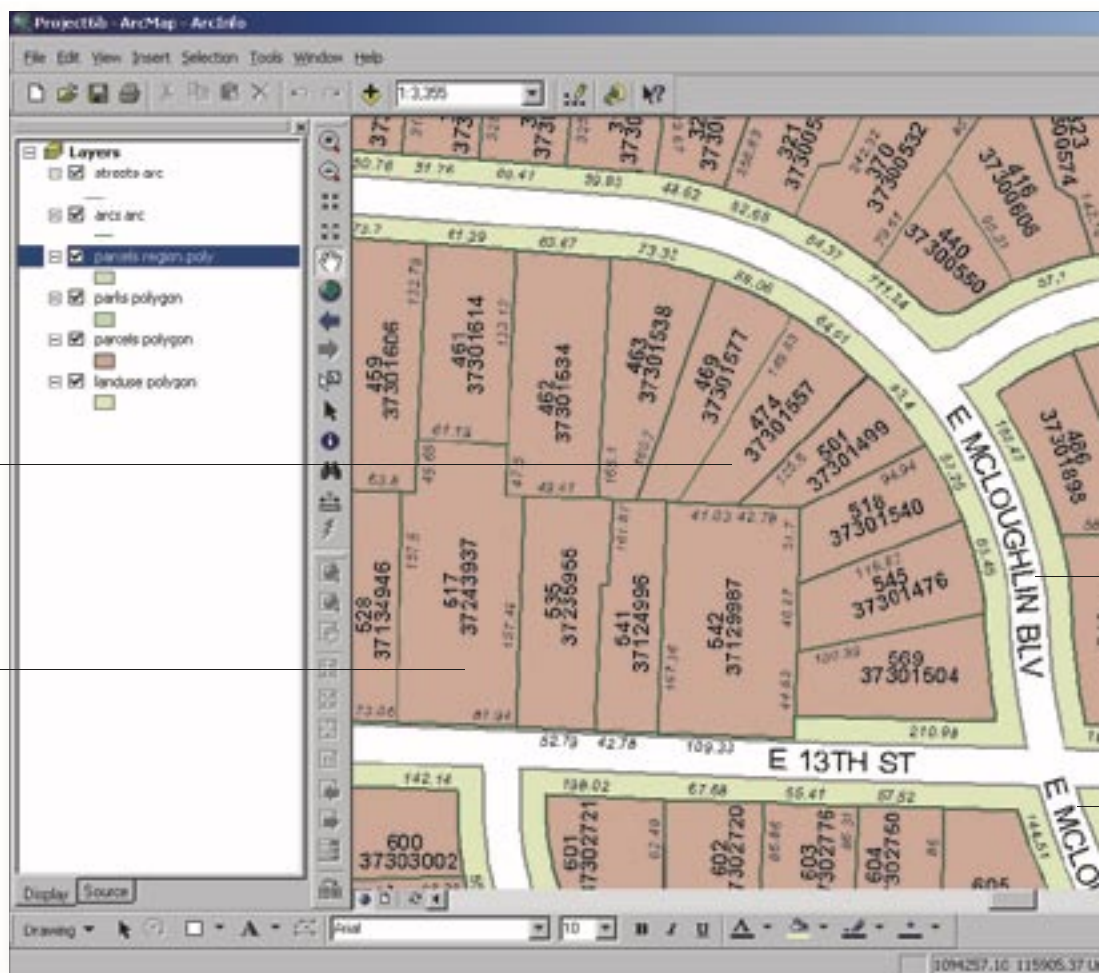
Maplex for ArcGIS can significantly reduce the amount of manual editing time by placing more labels correctly the first time, based on the map labeling specifications. The conflict detection works across all map layers and takes into account placement priorities and feature rankings. The cartographer can choose from a wide range of placement styles, label fitting strategies, and conflict detection rules. Some of these options include

- Alternate placement methods
- Automatic label stacking
- Automatic font reduction
- Automatic label abbreviation
- Label repetition along lines
- Polygon boundary placement
- Automatic word and character spreading
- Control of feature overrun
- Feature and label priority ranking
- Placement of formatted text
- Alignment to map projection
- Angle label by attribute value
- Label deletion rules
- Street placement techniques

Labels can be stacked and may contain values from multiple feature attributes.



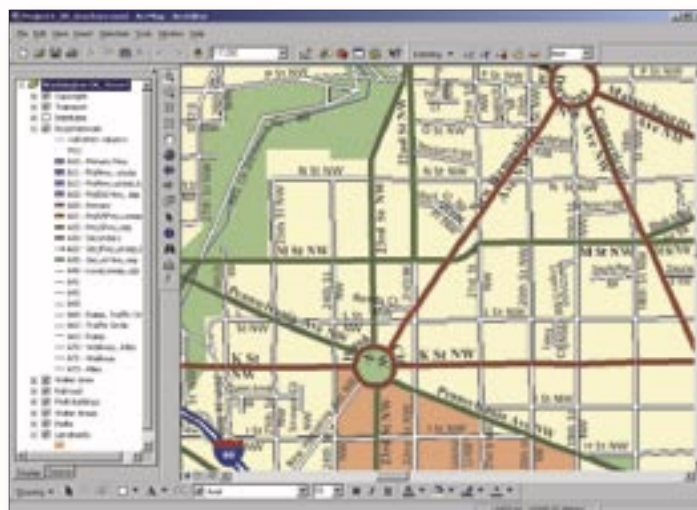
The Maplex for ArcGIS placement engine can abbreviate words, such as “Street” to “St,” to obtain a better placement on the map. Users enter the list of abbreviations that are to be tried on the map in the abbreviation dictionary dialog. Dictionaries can be shared using tables in the database, and different languages are supported.



Maplex for ArcGIS can automatically place a larger number of labels in appropriate locations, reducing manual labeling.



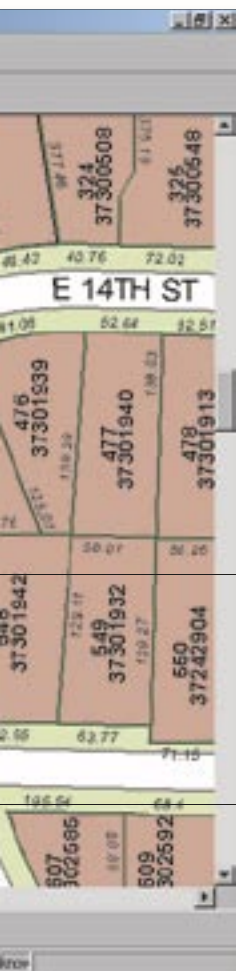
A wide range of placement styles is available in Maplex for ArcGIS for labeling point, line, and polygon features.



Integrated With ArcGIS Desktop

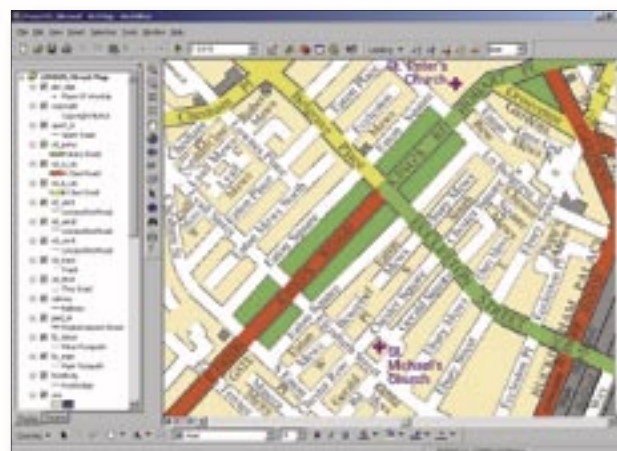
Maplex for ArcGIS text placement is tightly integrated with the labeling and annotation environment of the core ArcGIS Desktop products. To ensure a complete solution for annotation creation and editing, Maplex for ArcGIS was designed to complement the core ArcGIS Desktop annotation editing tools. The extension works seamlessly with the ArcGIS Desktop features such as the label manager, label cache, unplaced annotation manager, tools for stacking/curving/reshaping, and annotation management.

Maplex for ArcGIS generates all forms of annotation that may be stored in the map or in the geodatabase. In particular, Maplex for ArcGIS, coupled with ArcEditor or ArcInfo, can generate feature-linked annotation that is essential for most production cartographers. Feature-linked annotation reflects the current state of features in the geodatabase and is automatically updated when features are moved, edited, or deleted.



Labels can follow the curvature of lines.

Street labels can be repeated.



Use Maplex for ArcGIS to create street maps in both U.S. and European styles.

Produce Clearer Maps

Maplex for ArcGIS produces high-quality cartographic results. If you create production-quality, annotated maps, these tools will save you hours of intensive manual labeling time.

Requirements

Maplex for ArcGIS requires one of the following:

- ArcView 9
- ArcEditor 9
- ArcInfo 9

To evaluate, visit

www.esri.com/maplexforarcgis



For more than 30 years ESRI has been helping people manage and analyze geographic information. ESRI offers a framework for implementing GIS technology in any organization with a seamless link from personal GIS on the desktop to enterprisewide GIS client/server and data management systems. ESRI GIS solutions are flexible and can be customized to meet the needs of our users. ESRI is a full-service GIS company, ready to help you begin, grow, and build success with GIS.

Corporate

ESRI

380 New York Street
Redlands, California
92373-8100, USA
Telephone: 909-793-2853
Fax: 909-793-5953

For more information
on ESRI, call

1-800-447-9778

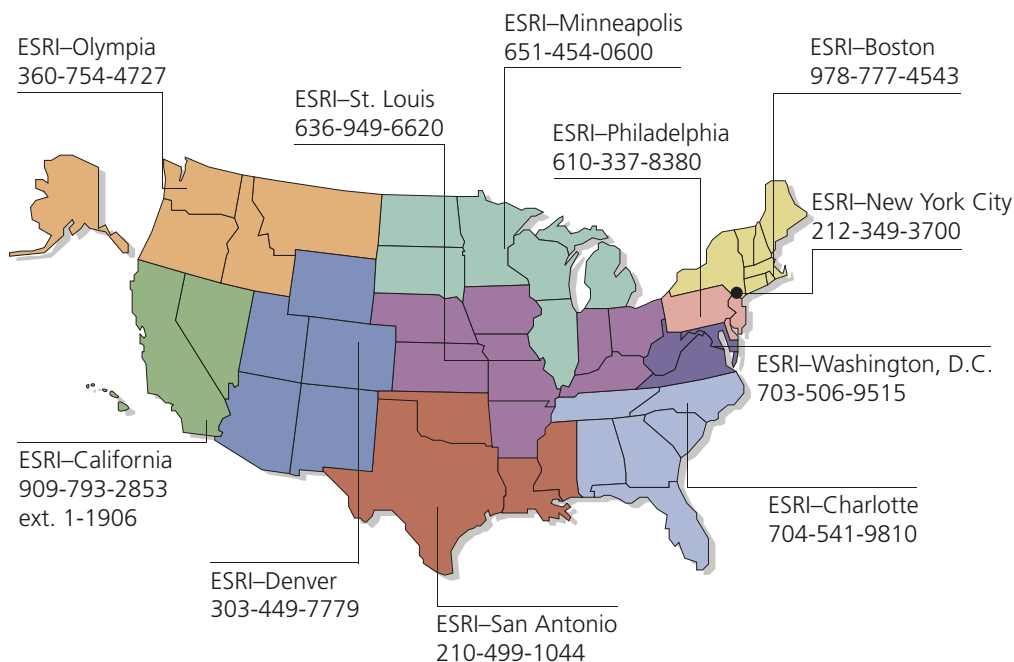
(1-800-GIS-XPRT)

or contact an ESRI reseller near you.

Send e-mail inquiries to
info@esri.com

Visit ESRI's Web page at
www.esri.com

Regional Offices



International Offices

Outside the United States,
contact your local ESRI distributor.
For the number of your distributor,
call ESRI at 909-793-2853,
ext. 1235,
or visit our Web site at
www.esri.com/international

Australia
www.esriaustralia.com.au

Belgium/Luxembourg
www.esribelux.com

Bulgaria
www.esribulgaria.com

Canada
www.esricanada.com

China (Beijing)
www.esrichina-bj.cn

China (Hong Kong)
www.esrichina-hk.com

Finland
www.esri-finland.com

France
www.esrifrance.fr

Germany/Switzerland
www.esri-germany.de
www.esri-suisse.ch

Hungary
www.esrihu.hu

India
www.esriindia.com

Indonesia/Malaysia
62-21-527-1023
603-7874-9930

Italy
www.esriitalia.it

Japan
www.esrij.com

Korea
www.esrikr.co.kr

Netherlands
www.esrinl.com

Poland
www.esripolska.com.pl

Portugal
www.esri-portugal.pt

Romania
www.esriro.ro

Singapore
www.esrisa.com

Spain
www.esri-es.com

Sweden
www.esri-sweden.com

Thailand
www.esrith.com

United Kingdom
www.esriuk.com

Venezuela
www.esriven.com

Copyright © 2004 ESRI. All rights reserved. ESRI, the ESRI globe logo, the ArcGIS logo, ArcGIS, ArcMap, ArcView, ArcEditor, ArcInfo, @esri.com, and www.esri.com are trademarks, registered trademarks, or service marks of ESRI in the United States, the European Community, or certain other jurisdictions. Other companies and products mentioned herein are trademarks or registered trademarks of their respective trademark owners.



No. GS-35F-5086H

Place ESRI business partner or distributor address here.