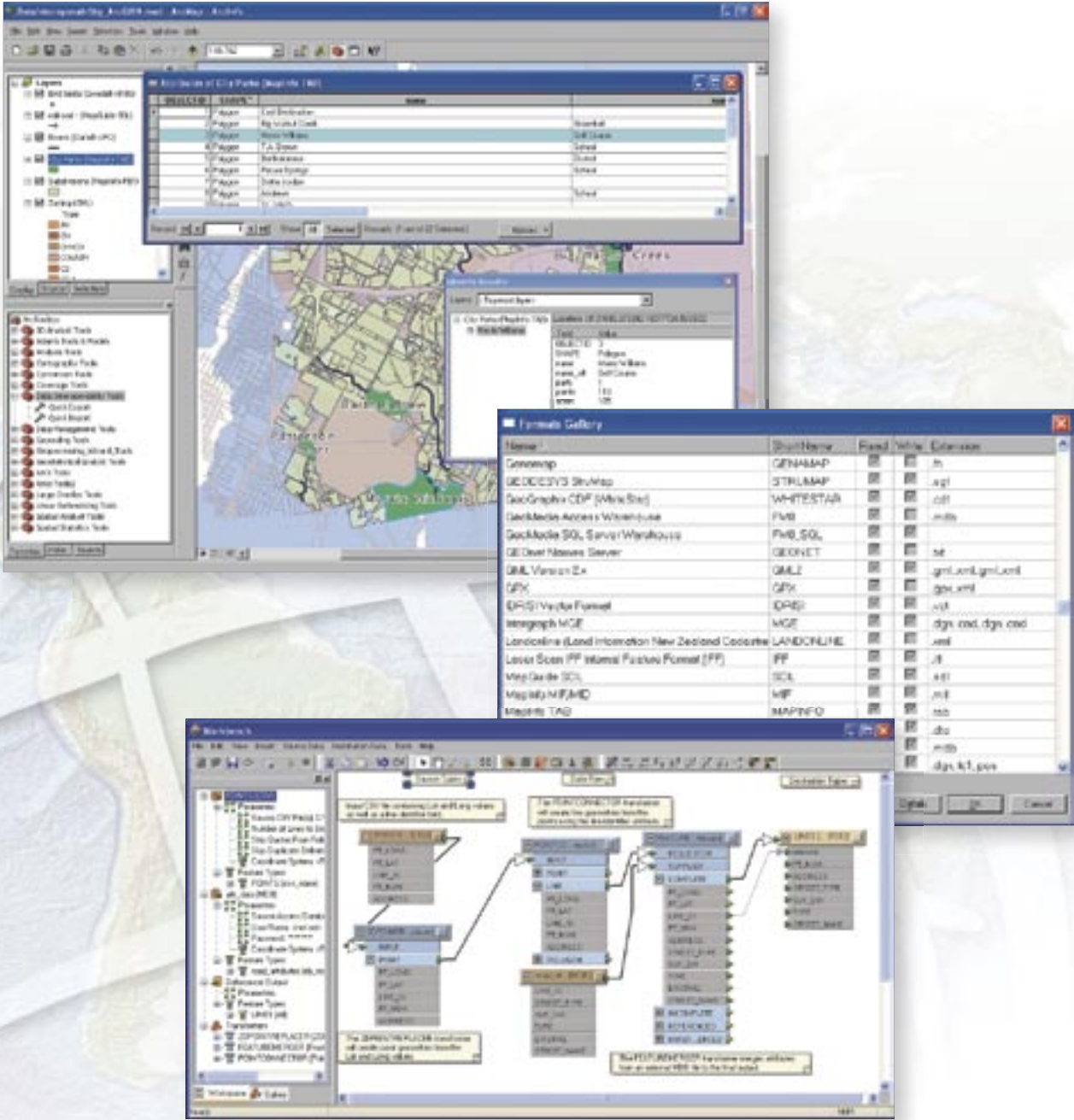


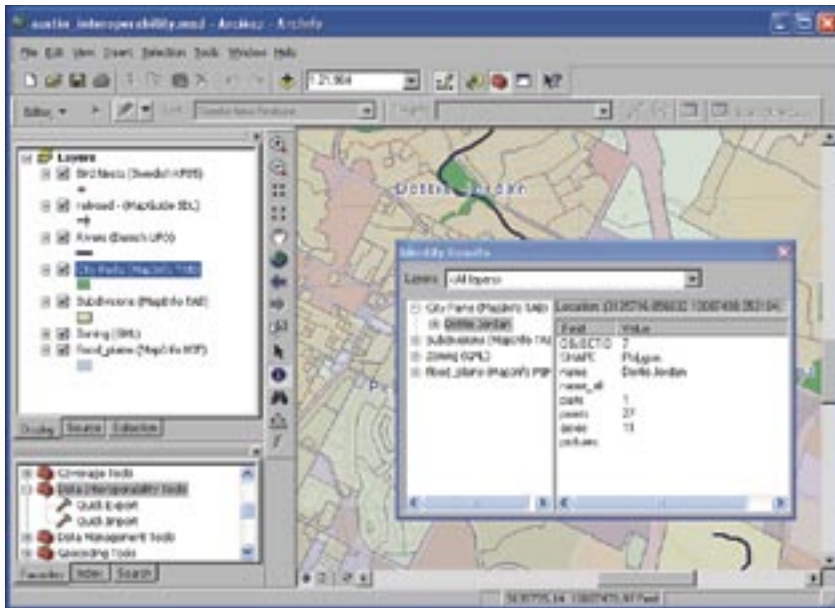
ArcGIS® Data Interoperability

Direct Read, Data Translation, and Data Transformation



ArcGIS® Data Interoperability

Direct Read, Data Translation, and Data Transformation

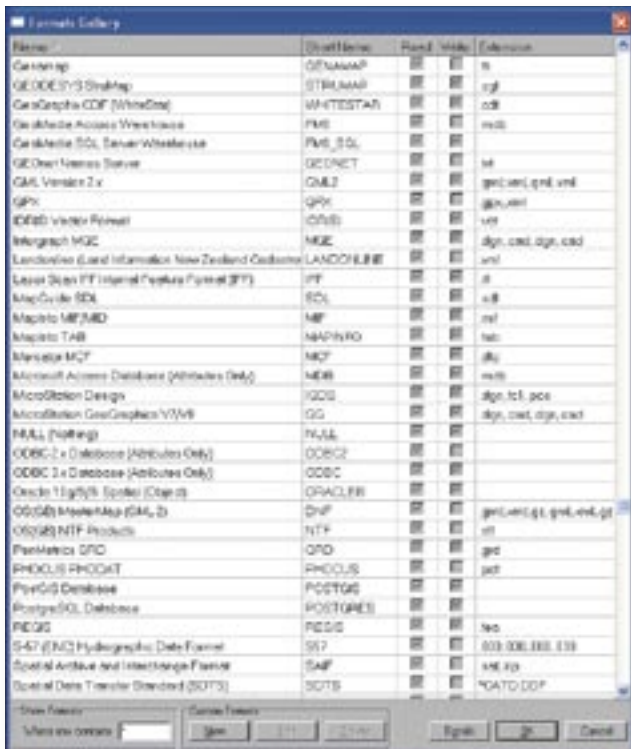


Directly use data in many formats within the ArcGIS Desktop environment.

ArcGIS® Data Interoperability eliminates barriers to data sharing by providing state-of-the-art direct data access, complex data transformation, and import/export capabilities. Jointly developed by ESRI and Safe Software—an ESRI Corporate Alliance—this extension is built on Safe’s industry-standard Feature Manipulation Engine (FME) technology. ArcGIS Data Interoperability allows geographic information system (GIS) professionals to use any standard GIS data within the ArcGIS Desktop environment, regardless of the format. This means that users can directly read, display, and analyze this data using all the tools available within ArcGIS Desktop.

ArcGIS Data Interoperability Features

- Direct Read—Directly read more than 70 spatial data formats and export to more than 50 spatial data formats.
- Data Translation—Perform automated conversion between source and destination formats.
- Data Transformation—Further manipulate and translate default formats to create custom formats using the Workbench application.
- Full Integration With the Geoprocessing Framework—Enjoy full integration with the ArcGIS geoprocessing environment including the ModelBuilder™ framework.



Work with more than 70 data formats.

Extensive Data Support

ArcGIS Data Interoperability adds support for more than 70 formats including Geography Markup Language (GML), XML, WFS, Autodesk®, DWG/DXF, MicroStation® Design, MapInfo® MID/MIF and TAB, Oracle® and Oracle Spatial, and Intergraph® GeoMedia™ Warehouse. With the direct read capabilities, users can access these formats as read only.

ArcGIS Data Interoperability allows users to access and overlay these data formats the same as any other ESRI® format, such as a personal geodatabase or shapefile; browse the data in ArcCatalog™ to view the geometry, attributes, and metadata; add the data to ArcMap™ (or other ArcGIS applications, such as ArcGIS 3D Analyst™ ArcGlobe™); overlay these layers with the user’s other data for display and analysis; and use all map and data tools such as Pan, Zoom, Identify, and Labeling.

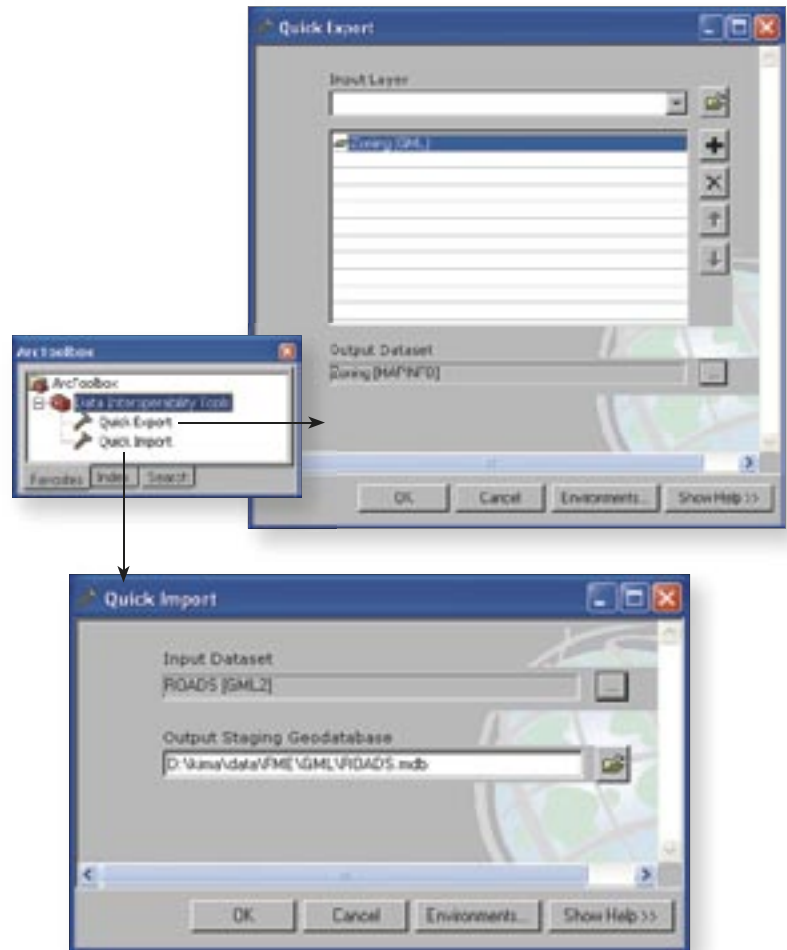
Data Translation

The ArcGIS Data Interoperability extension allows users to directly read, display, and analyze data, utilizing all the available tools in ArcGIS Desktop. ArcGIS Data Interoperability provides a new toolbox with Quick Import and Quick Export tools that allow ArcGIS users to quickly translate between data formats with default format settings.

Data Transformation

ArcGIS Data Interoperability provides a graphic data flow environment, called Workbench, for further translation and schema redefinitions. Fully integrated into ArcGIS Desktop products, Workbench is a semantic translation engine that allows users to build custom formats or create custom import or export tools. Workbench provides a rich set of more than 150 specialized transformers that can be used to transform both geographic and attribute information and lets users visually manipulate data translations.

With ArcGIS Data Interoperability, users can build features, join attributes, rename fields, split data into multiple layers, and perform many more transformations without having to write code and still be able to use the custom data format repeatedly in ArcGIS Desktop just like any other data source.



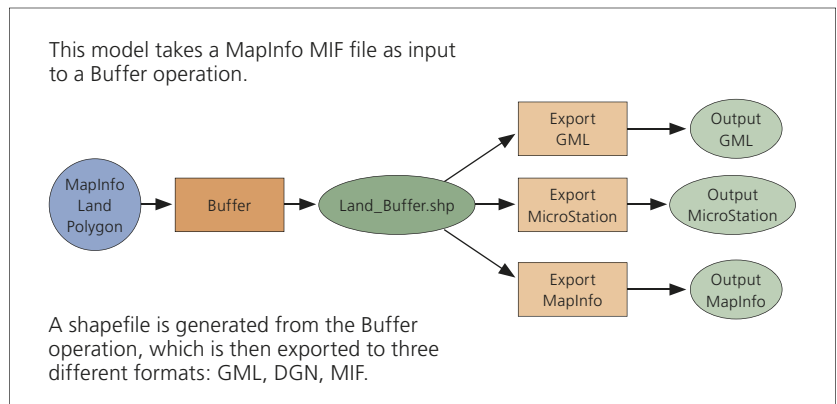
Use the Data Translation tools to easily convert data between formats.

Full Integration With the Geoprocessing Framework

Formats supported by ArcGIS Data Interoperability can be fully integrated into the geoprocessing environment including the ModelBuilder framework. Data, including custom formats, can be used as input for the geoprocessing tools. With ModelBuilder, data formats can be manipulated within GIS models and incorporated into the users' work flow for geographic data processing and analysis. The ArcGIS Data Interoperability Import, Export, and Transformation tools can also be used within the ModelBuilder framework for importing many data formats into a spatial processing environment, then exporting the results to various formats.

Requirements

ArcGIS Data Interoperability requires ArcView® 9, ArcEditor™ 9, or ArcInfo® 9.



Integrate the new data formats into the ArcGIS geoprocessing framework.

Evaluate ArcGIS Data Interoperability Today
www.esri.com/datainteroperability



For more than 35 years ESRI has been helping people manage and analyze geographic information. ESRI offers a framework for implementing GIS technology in any organization with a seamless link from personal GIS on the desktop to enterprisewide GIS client/server and data management systems. ESRI GIS solutions are flexible and can be customized to meet the needs of our users. ESRI is a full-service GIS company, ready to help you begin, grow, and build success with GIS.

Corporate

ESRI
380 New York Street
Redlands, California
92373-8100, USA
Telephone: 909-793-2853
Fax: 909-793-5953

For more information
on ESRI, call

1-800-447-9778

(1-800-GIS-XPRT)

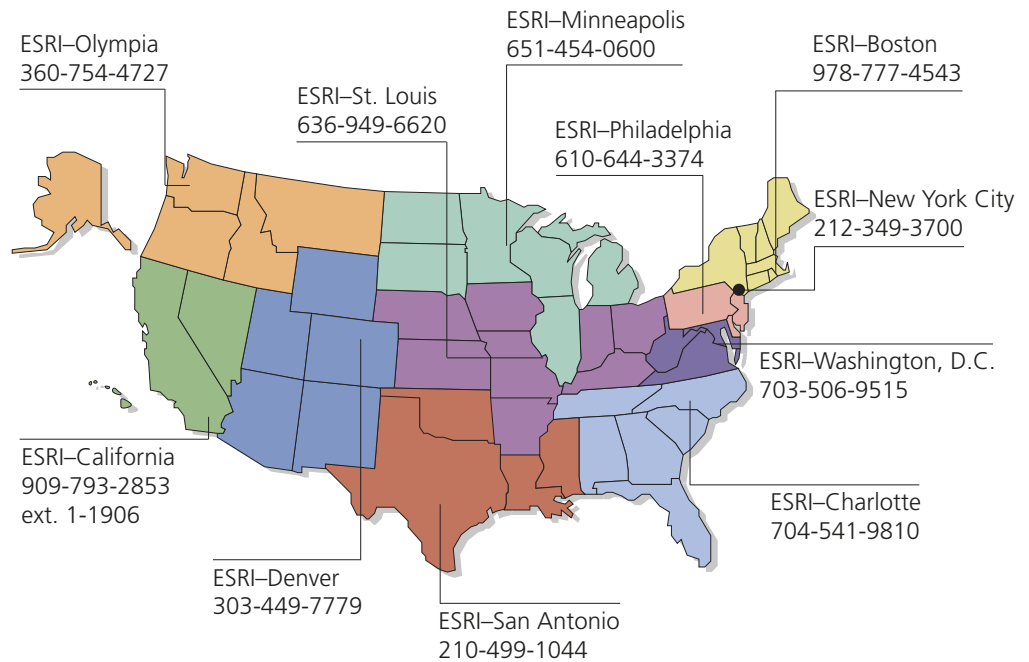
or contact an ESRI value-added
reseller near you.

Send e-mail inquiries to
info@esri.com

Visit ESRI's Web page at
www.esri.com

Outside the United States,
contact your local ESRI distributor.
For the number of your distributor,
call ESRI at 909-793-2853,
ext. 1235,
or visit our Web site at
www.esri.com/international

Regional Offices



International Offices

Australia
www.esriaustralia.com.au

Finland
www.esri-finland.com

Italy
www.esriitalia.it

Romania
www.esriro.ro

Belgium/Luxembourg
www.esribelux.com

France
www.esrifrance.fr

Japan
www.esrij.com

Singapore
www.esrisa.com

Bulgaria
www.esribulgaria.com

Germany/Switzerland
www.esri-germany.de
www.esri-suisse.ch

Korea
www.esrikr.co.kr

Spain
www.esri-es.com

Canada
www.esricanada.com

Hungary
www.esrihu.hu

Netherlands
www.esrinl.com

Sweden
www.esri-sweden.com

China (Beijing)
www.esrichina-bj.cn

India
www.esriindia.com

Poland
www.esripolska.com.pl

Thailand
www.esrith.com

China (Hong Kong)
www.esrichina-hk.com

Indonesia/Malaysia
62-21-527-1023
603-7874-9930

Portugal
www.esri-portugal.pt

United Kingdom
www.esriuk.com

Venezuela
www.esriven.com



Place ESRI business partner or distributor address here.

Copyright © 2005 ESRI. All rights reserved. ESRI, the ESRI globe logo, ArcGIS, the ArcGIS logo, ArcGlobe, 3DAnalyst, ArcToolbox, ArcMap, ArcCatalog, ModelBuilder, ArcView, ArcInfo, ArcEditor, @esri.com, and www.esri.com are trademarks, registered trademarks, or service marks of ESRI in the United States, the European Community, or certain other jurisdictions. Other companies and products mentioned herein are trademarks or registered trademarks of their respective trademark owners.

