

Explore the World with ArcGIS® Explorer

Access Free Globes and GIS Tasks

With ArcGIS® Explorer, you can do much more than look at a simple map. You can connect to a variety of free, ready-to-use globes hosted by ESRI, combine these with other Web services or your own local data to create custom globes, then use tasks that give you the power of geoprocessing and geographic information system (GIS) analytic capabilities.

ArcGIS Explorer is a free, lightweight, downloadable application that offers an easy way to access online GIS content and capabilities. It supports a variety of 2D and 3D mapping services as well as geoprocessing services for spatial analysis. Use ArcGIS Explorer to access and fuse any standard Web service including those from ArcGIS Server, ArcIMS®, ArcWeb Services, and Web Map Service (WMS). These services can also be integrated with your local data and imagery.

Free Basemaps Give Context to Your Local Data

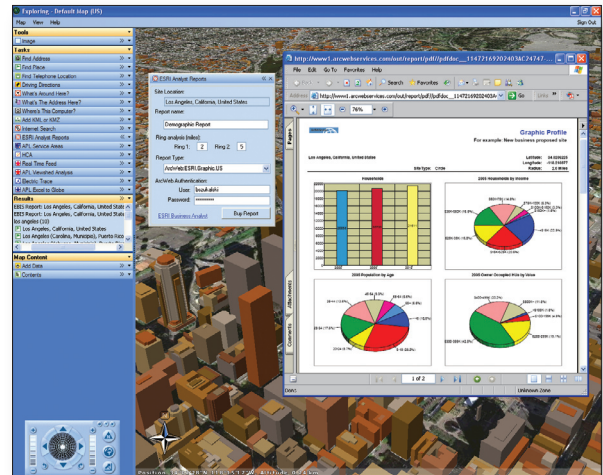
Create meaningful, custom maps with ArcGIS Explorer by freely connecting to ESRI-hosted ArcGIS™ Online. ArcGIS Online services provide you with access to satellite imagery for the entire world, worldwide streets, terrain, boundaries and labels, political maps, and physiography. You can combine these services with other Web services and your local data to create globes that give you a more complete picture of your area of interest.

Local data that you can add to your ArcGIS Explorer globes includes shapefiles, file geodatabases, KML/RM2, and a variety of image formats (JPEG 2000, GeoTIFF, MrSID®, and others).

Perform Spatial Analysis Using Tasks

One of the unique features of ArcGIS Explorer is that you can author custom tasks that perform specialized GIS functions. These tasks, which may include advanced geoprocessing and GIS analytic capabilities such as viewshed analysis and terrain profiling, are authored using ArcGIS Desktop and served via ArcGIS Server. No programming is necessary to create custom tasks, and they can be used in ArcGIS Explorer without specialized GIS training.

A software developer kit (SDK) for extending default tasks or building new ones is also available as a free download.



Use ArcGIS Explorer to integrate Web services and local data onto 3D maps.

Free Download
www.esri.com/arcgisexplorer



ArcGIS Explorer supports geoprocessing services for spatial analysis.



For more information about ArcGIS Explorer, visit www.esri.com/arcgisexplorer.

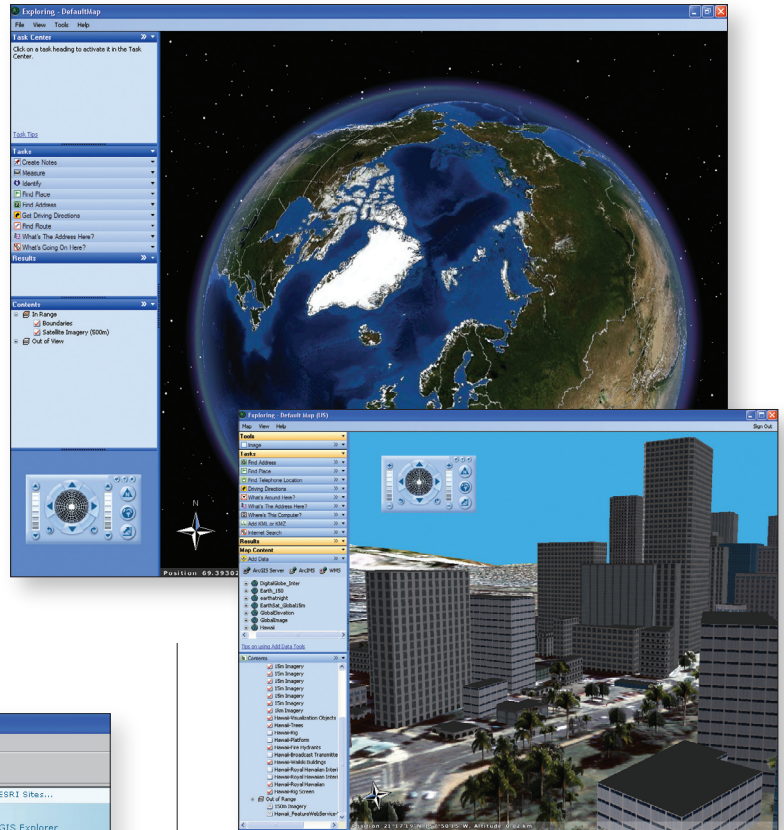
Customize ArcGIS Explorer to Fit Your Needs

Tailor ArcGIS Explorer to your specific needs and configuration. Available options include setting up preferences for startup, selecting map displays and controls (including navigation, mouse controls, and effects such as sun shading and clouds), and managing system resources.

Getting Started

Visit www.esri.com/arcgisexplorer and download the application. There you will find instructions for accessing ArcGIS Online services via ArcGIS Explorer so that you can start creating your own globes right away.

Help is provided both via the ArcGIS Explorer menus and the online ArcGIS Explorer Resource Center at resources.esri.com/arcgisexplorer. The Resource Center offers links to maps and other ArcGIS Explorer resources as well as discussion forums and downloads.



The ArcGIS Explorer Resource Center helps you get started.

Download ArcGIS Explorer

Visit www.esri.com/arcgisexplorer and start leveraging data, services, and applications on the Web.

Tailor ArcGIS Explorer to your specific needs.



380 New York Street
Redlands, California
92373-8100 USA

Call ESRI at
1-800-447-9778.

Send e-mail inquiries to
info@esri.com.

Visit ESRI's Web page at
www.esri.com.