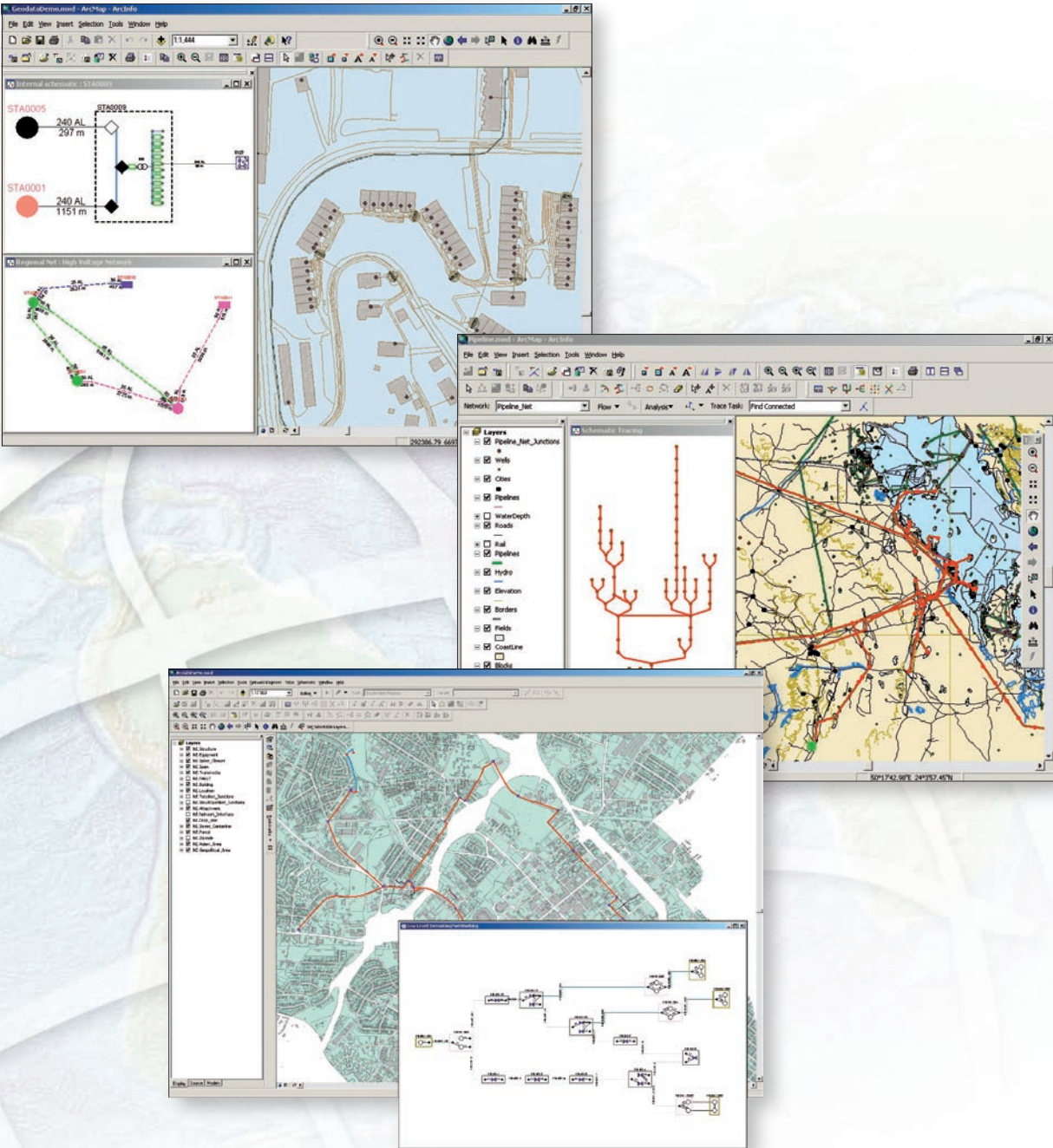


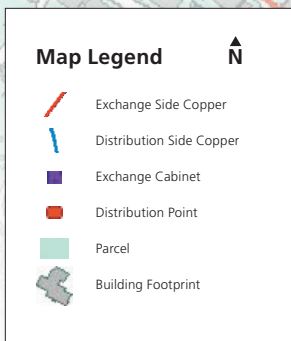
# ArcGIS® Schematics

Automatic Schematic Generation for ArcGIS



# ArcGIS® Schematics

Automatic Schematic Generation for ArcGIS

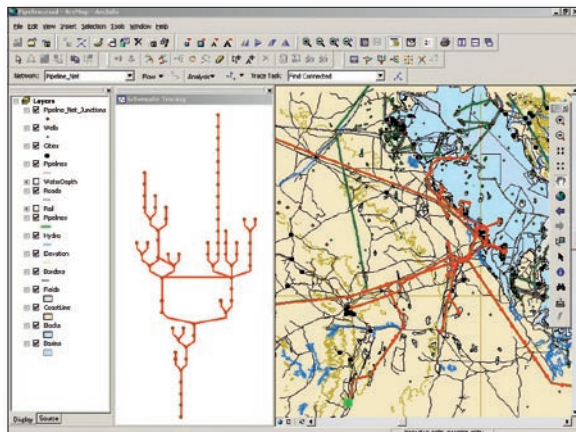


ArcGIS® Schematics, an extension to ArcGIS Desktop (ArcView®, ArcEditor™, and ArcInfo®), enables users to automatically generate, visualize, and manipulate diagrams from network data or data that has attributes for relationships.

By allowing users to efficiently create multilevel representations, readily check network connectivity, and easily obtain logical views of any linear network, ArcGIS Schematics improves efficiency and facilitates the decision-making process. ArcGIS Schematics allows you to

- Automatically generate schematics from complex networks.
- Check network connectivity.
- Perform quality control of network data.
- Optimize network design and analysis.
- Forecast and plan (e.g., conduct modeling, simulation, and comparative analysis).
- Dynamically interact with geographic information system (GIS) software through a schematic view.
- Perform commercial and market analyses.
- Model social networks.
- Generate flowcharts.
- Manage interdependencies.

Local, long distance, and mobile carriers; network service providers; and satellite and cable TV providers need ArcGIS Schematics to model and design networks, provide input to capacity planning, and monitor network congestion. In the telecommunications market, ArcGIS Schematics allows for better information exchange, intuitive network analysis, and faster network rollout.



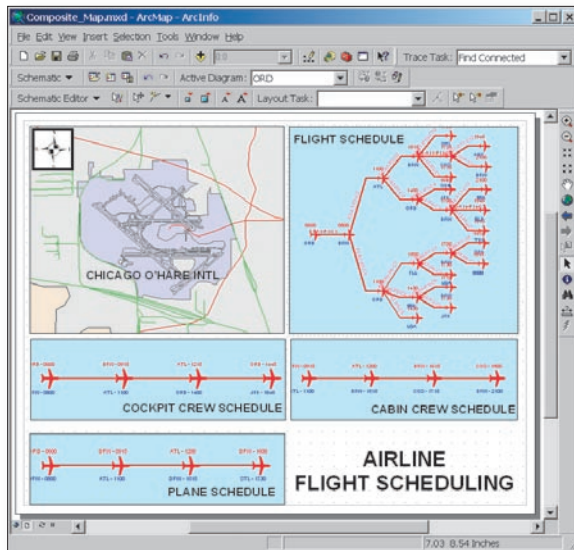
ArcGIS Schematics allows for better management and visualization of virtually any network

For more information, visit  
[www.esri.com/schematics](http://www.esri.com/schematics).

# Key Features

## Automatic Diagram Generation

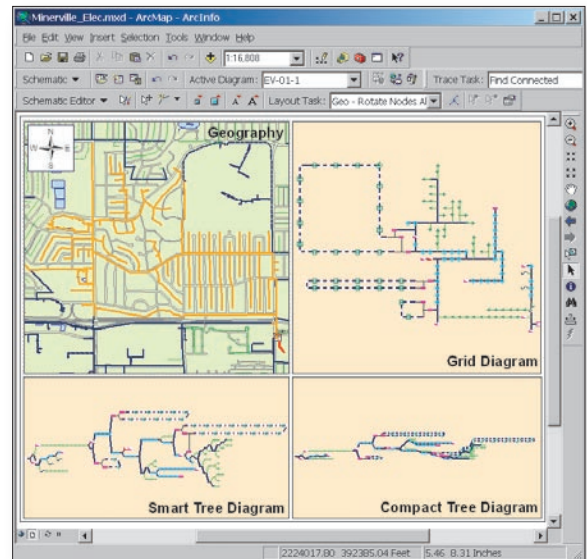
ArcGIS Schematics automatically generates geoschematic and pure schematic views from existing network data, thus limiting the number of operations needed to build architecture and maintain network data updates. ArcGIS Schematics provides greater return on investment by saving you time and money.



Automatic generation of schedule diagrams

## Multirepresentation

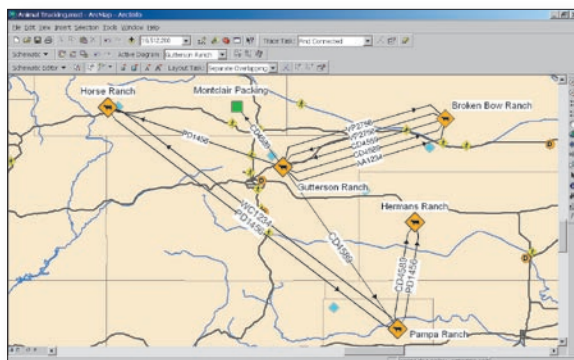
ArcGIS Schematics allows you to see the same set of network features in different graphical representations such as geographic, geoschematic, and schematic. Multiple graphical representations, such as logical and physical display, provide a better understanding of how a network is organized and help accelerate decision cycles.



Multiple representations of a network

## Dynamic Interaction with GIS

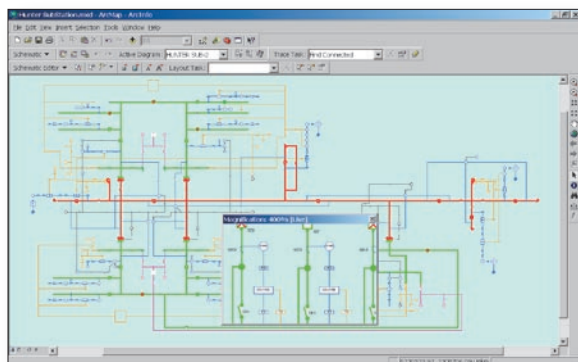
ArcGIS Schematics complements GIS technology in the design, construction, and management of networks because it emphasizes the location in the geographical space.



Tracking diagram integrated with GIS

### Data-Driven Solution

As a data-driven solution, ArcGIS Schematics provides high-quality, reliable results and up-to-date representations of the network for any industry. Regardless of the data model, the symbology is driven by attributes in the geodatabase, preventing discrepancies between the schematic and the database and eliminating the need for a redundant database.



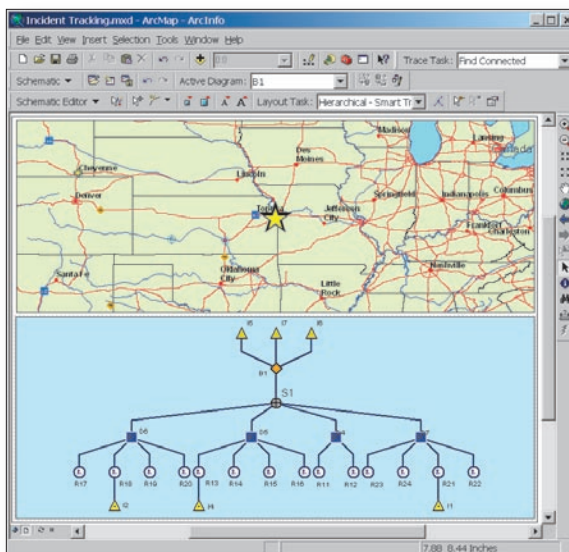
On-the-fly diagram generation and updating

### Customizable Algorithms

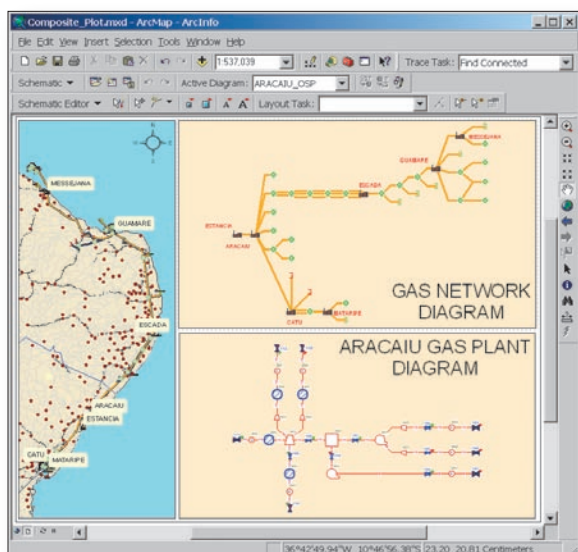
ArcGIS Schematics software's layout algorithms allow the representation of any type of network or diagram including outside- and inside-plant diagrams. These algorithms can be configured and customized to fit industry needs, company standards, and specific departmental needs in companies. Algorithms may also be created from scratch using a COM-compliant programming language.

### Multiple Data Source Access

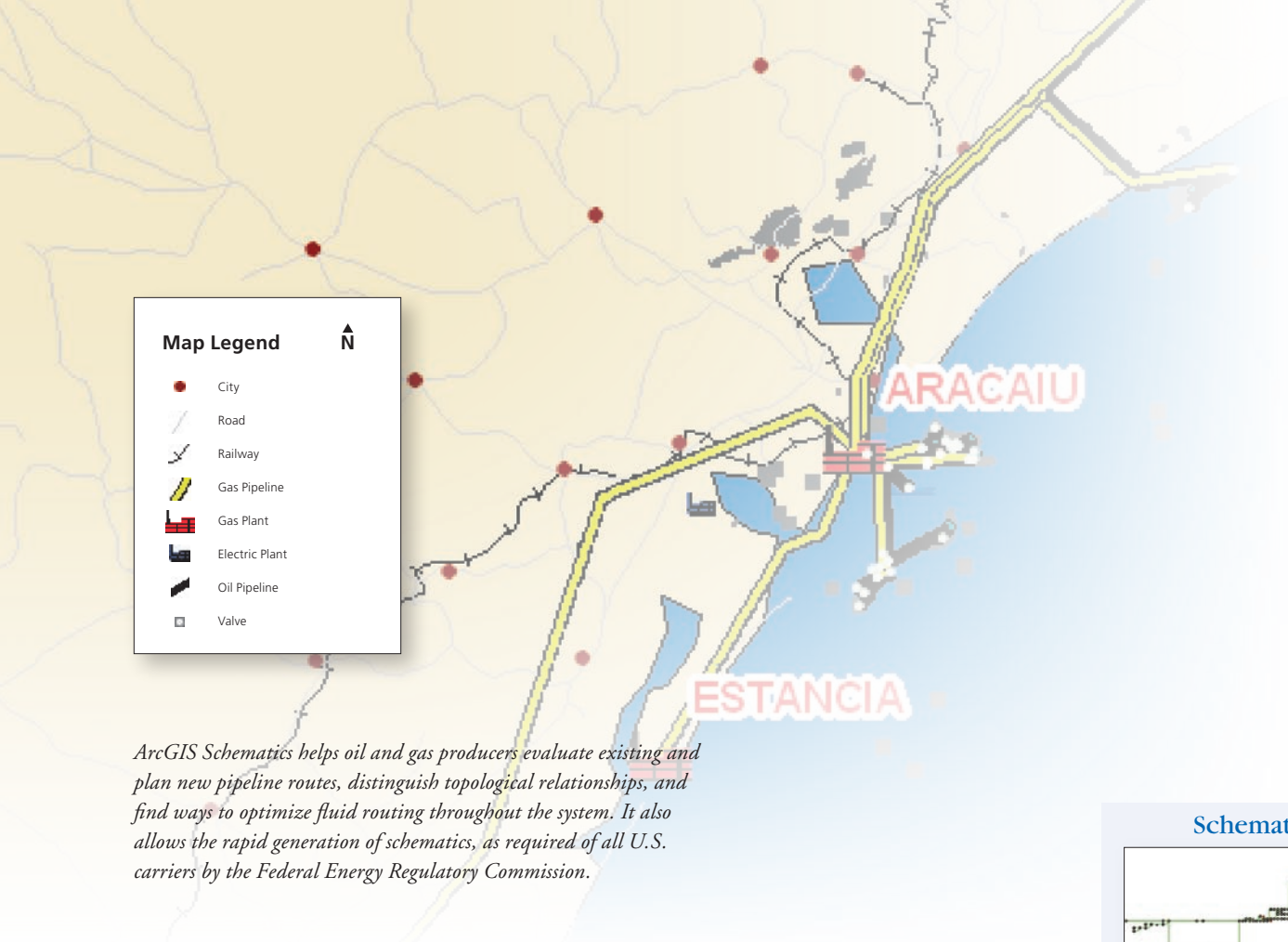
Users can manage both spatial and nonspatial data with ArcGIS Schematics and interact with a geodatabase and other network-related databases in a single session. Integration of corporate-wide data provides the means to effectively manage network assets.



Supply diagram created using custom layout algorithms



Composite map created from multiple data sources



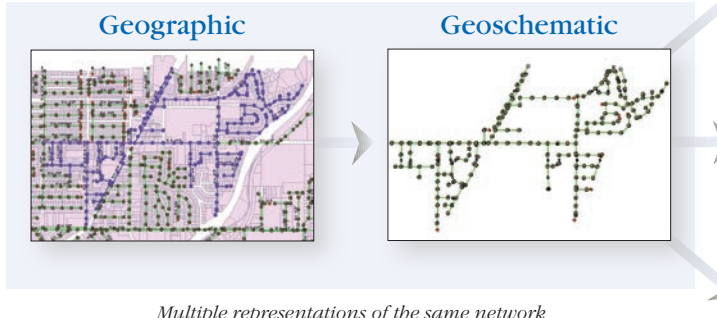
**Map Legend** ↑

- City
- Road
- 🚊 Railway
- ▬ Gas Pipeline
- ⚡ Gas Plant
- ⚡ Electric Plant
- ⚡ Oil Pipeline
- Valve

*ArcGIS Schematics helps oil and gas producers evaluate existing and plan new pipeline routes, distinguish topological relationships, and find ways to optimize fluid routing throughout the system. It also allows the rapid generation of schematics, as required of all U.S. carriers by the Federal Energy Regulatory Commission.*

### Industries That Benefit from ArcGIS Schematics

- Electric and gas
- Transportation
- Water/Wastewater
- Petroleum/Pipeline
- Telecommunications
- Homeland security
- Hydrology
- Local government
- Defense and intelligence



*Multiple representations of the same network*

**Schematic**

Backbone

Smart Tree

Mainline Orthogonal

### Applications That Benefit from ArcGIS Schematics

- Customer information
- Forecasting and planning
- Operations management
- GIS/FM SCADA
- Outage and trouble management
- Design and analysis
- Flow management
- Tracking management

To evaluate ArcGIS Schematics, visit [www.esri.com/schematics](http://www.esri.com/schematics).



For more than 35 years, ESRI has been helping people manage and analyze geographic information. ESRI offers a framework for implementing GIS technology in any organization with a seamless link from personal GIS on the desktop to enterprise-wide GIS client/server and data management systems. ESRI GIS solutions are flexible and can be customized to meet the needs of our users. ESRI is a full-service GIS company, ready to help you begin, grow, and build success with GIS.

## Corporate

ESRI  
380 New York Street  
Redlands, California  
92373-8100, USA  
Telephone: 909-793-2853  
Fax: 909-793-5953

For more information  
on ESRI, call

**1-800-447-9778**

(1-800-GIS-XPRT)

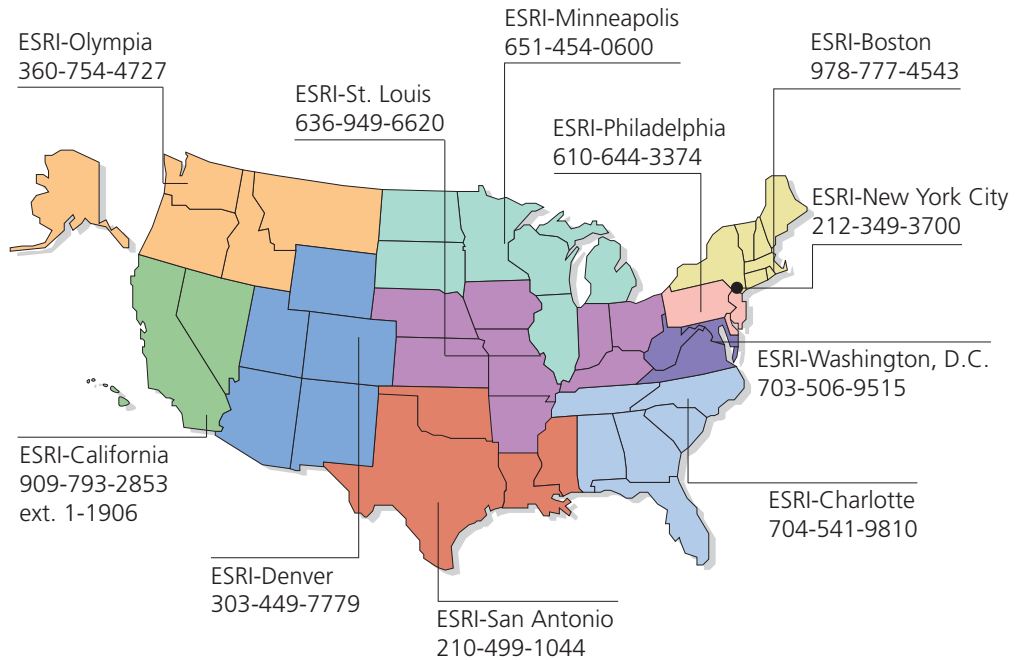
or contact an ESRI value-added  
reseller near you.

Send e-mail inquiries to  
**[info@esri.com](mailto:info@esri.com)**

Visit ESRI's Web page at  
**[www.esri.com](http://www.esri.com)**

Outside the United States,  
contact your local ESRI distributor.  
For the number of your distributor,  
call ESRI at 909-793-2853,  
ext. 1-1235,  
or visit our Web site at  
**[www.esri.com/international](http://www.esri.com/international)**

## Regional Offices



## International Offices

Australia <a href="http://www.esriaustralia.com.au">www.esriaustralia.com.au</a>	Finland <a href="http://www.esri-finland.com">www.esri-finland.com</a>	Italy <a href="http://www.esriitalia.it">www.esriitalia.it</a>	Romania <a href="http://www.esriro.ro">www.esriro.ro</a>
Belgium/Luxembourg <a href="http://www.esribelux.com">www.esribelux.com</a>	France <a href="http://www.esrifrance.fr">www.esrifrance.fr</a>	Japan <a href="http://www.esrij.com">www.esrij.com</a>	Singapore <a href="http://www.esrisa.com">www.esrisa.com</a>
Bulgaria <a href="http://www.esribulgaria.com">www.esribulgaria.com</a>	Germany/Switzerland <a href="http://www.esri-germany.de">www.esri-germany.de</a> <a href="http://www.esri-suisse.ch">www.esri-suisse.ch</a>	Korea <a href="http://www.esrikr.co.kr">www.esrikr.co.kr</a>	Spain <a href="http://www.esri-es.com">www.esri-es.com</a>
Canada <a href="http://www.esricanada.com">www.esricanada.com</a>	Hungary <a href="http://www.esrihu.hu">www.esrihu.hu</a>	Netherlands <a href="http://www.esrinl.com">www.esrinl.com</a>	Sweden <a href="http://www.esri-sweden.com">www.esri-sweden.com</a>
China (Beijing) <a href="http://www.esrichina-bj.cn">www.esrichina-bj.cn</a>	India <a href="http://www.esriindia.com">www.esriindia.com</a>	Poland <a href="http://www.esripolska.com.pl">www.esripolska.com.pl</a>	Thailand <a href="http://www.esri.th.com/indochina">www.esri.th.com/indochina</a>
China (Hong Kong) <a href="http://www.esrichina-hk.com">www.esrichina-hk.com</a>	Indonesia/Malaysia 62-21-527-1023 603-7874-9930	Portugal <a href="http://www.esri-portugal.pt">www.esri-portugal.pt</a>	United Kingdom <a href="http://www.esriuk.com">www.esriuk.com</a>
			Venezuela <a href="http://www.esriven.com">www.esriven.com</a>

Place ESRI business partner or distributor address here.

Copyright © 2006 ESRI. All rights reserved. ESRI, the ESRI globe logo, the ArcGIS logo, ArcGIS, ArcView, ArcMap, ArcEditor, ArcInfo, @esri.com, and www.esri.com are trademarks, registered trademarks, or service marks of ESRI in the United States, the European Community, or certain other jurisdictions. Other companies and products mentioned herein are trademarks or registered trademarks of their respective trademark owners.



No. GS-35F-5086H