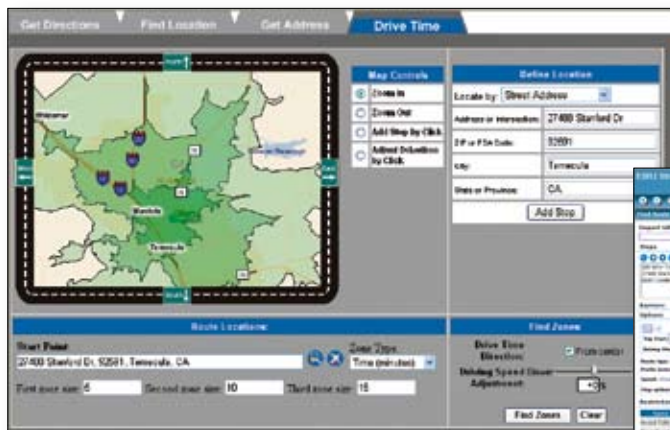
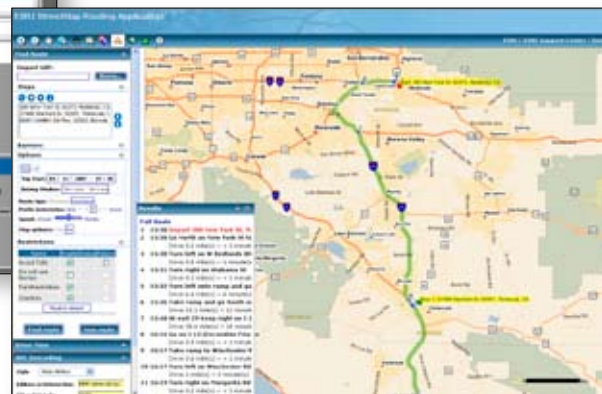


ArcIMS® Route Server

The complete routing and geocoding solution for ArcIMS®.



Drive-time polygons with drive zone limits generated by ArcIMS Route Server



ArcIMS Route Server sample application

ArcIMS Route Server adds high-performance, local and nationwide routing and geocoding to your ArcIMS application.

Realistic Routing

While calculating a route, ArcIMS Route Server takes into account real-life factors to provide the most accurate and dependable routing results. You can control a multitude of options and parameters to produce the optimum route based on your needs. In addition, developers have the opportunity to use the Web Application Developer Framework (ADF) to build their own customized routing applications.

Easily find a location

ArcIMS Route Server can also perform geocoding and reverse geocoding. This allows you to either find a location on a map using its address or coordinates, or click on a location on a map to obtain its address.

With ArcIMS Route Server you can

- Calculate optimal routes based on time, distance, and highway preferences
- Obtain point-to-point driving directions with international language support
- Accommodate multiple stops along a route
- Fine-tune results using precision settings
- Geocode and reverse geocode including support for international addresses
- Start from a sample application and data
- Support for route barriers and restrictions
- Ability to generate drive-time polygons

Optimized Data

ArcIMS Route Server is compatible with a range of commercially available third-party data sets that use the SDC compressed data format, which is specially optimized for high-speed geocoding and routing. Current data providers include Tele Atlas, NAVTEQ, and DMTI, with complete coverage for North America and Europe.



The State of New Jersey's Travel Guide Web site has incorporated ArcIMS Route Server to provide point-to-point driving directions.

For more information on how you can incorporate fast, accurate routing and geocoding into your ArcIMS Website, visit www.esri.com/routeserver, or call ESRI at 800-447-9778.





ESRI

380 New York Street
Redlands, California
92373-8100 USA

Phone: 909-793-2853
Fax: 909-793-5953
E-mail: info@esri.com

For more than 35 years, ESRI has been helping people make better decisions through management and analysis of geographic information. A full-service GIS company, ESRI offers a framework for implementing GIS technology and business logic in any organization from personal GIS on the desktop to enterprise-wide GIS servers (including the Web) and mobile devices. ESRI GIS solutions are flexible and can be customized to meet the needs of our users.

For More Information

1-800-GIS-XPRT (1-800-447-9778)

www.esri.com

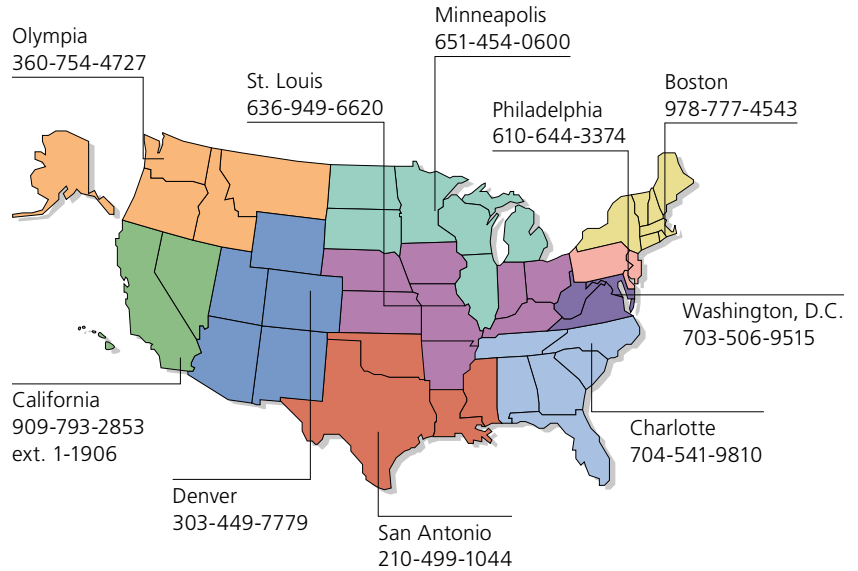
Locate an ESRI value-added reseller near you at

www.esri.com/resellers

Outside the United States, contact your local ESRI distributor. For the number of your distributor, call ESRI at 909-793-2853, ext. 1-1235, or visit our Web site at

www.esri.com/distributors

ESRI Regional Offices



ESRI International Offices

Australia
www.esriaustralia.com.au

Belgium/Luxembourg
www.esribelux.com

Bulgaria
www.esribulgaria.com

Canada
www.esricanada.com

Chile
www.esri-chile.com

China (Beijing)
www.esrichina-bj.cn

China (Hong Kong)
www.esrichina-hk.com

Finland
www.esri-finland.com

France
www.esrifrance.fr

Germany/Switzerland
www.esri-germany.de
www.esri-suisse.ch

Hungary
www.esrihu.hu

India
www.esriindia.com

Indonesia
www.esrisa.com

Italy
www.esriitalia.it

Japan
www.esrij.com

Korea
www.esrikr.co.kr

Malaysia
www.esrisa.com

Netherlands
www.esrinl.com

Northeast Africa
202-516-7485

Poland
www.esripolska.com

Portugal
www.esri-portugal.pt

Romania
www.esriro.com

Singapore
www.esrisa.com

Spain
www.esri-es.com

Sweden
www.esri-sweden.com

Thailand
www.esrith.com

United Kingdom
www.esriuk.com

Venezuela
www.esriven.com