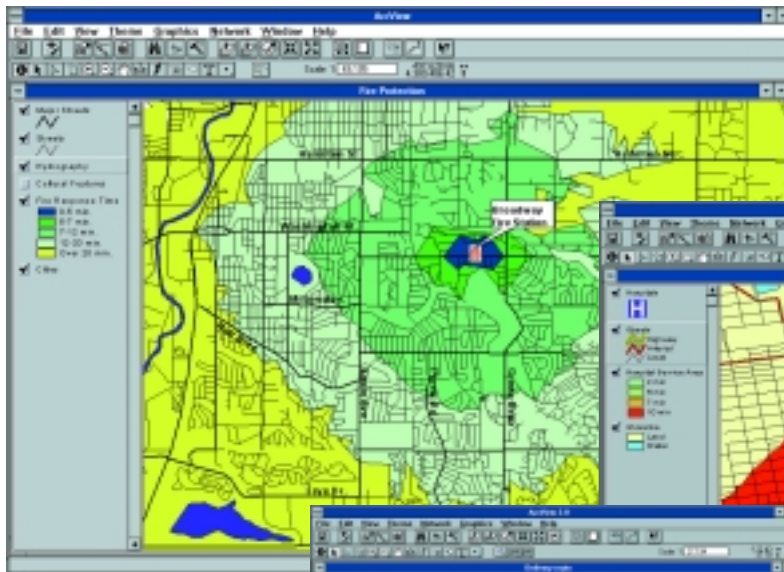


ArcView Network Analyst

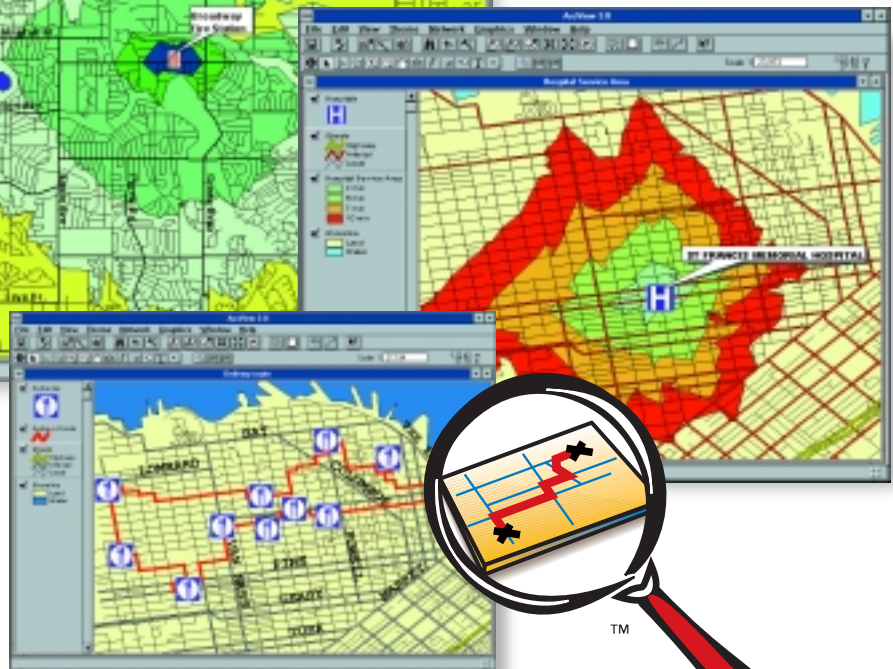
Powerful New Network Modeling Tools for the Desktop



Shortest Path

Optimum Route

Closest Facility



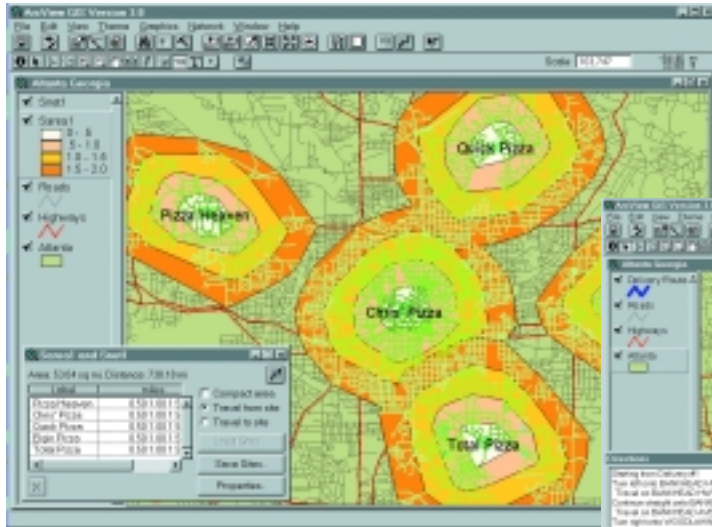
Drive Time Analysis

Point-to-Point Routing

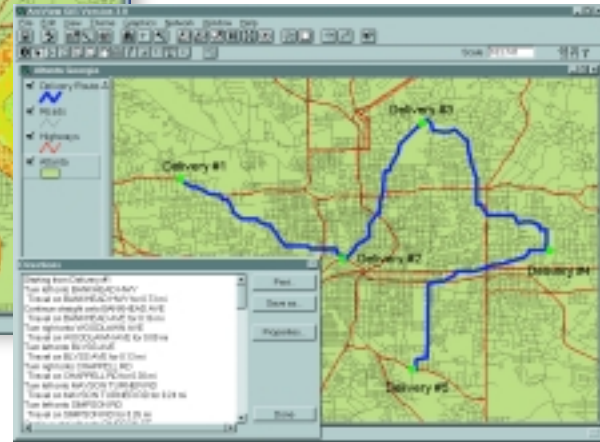
Route Directions

Service Area Definition

The ArcView® Network Analyst extension enables users of ArcView GIS to solve a variety of problems using geographic networks (i.e., streets, highways, rivers, pipelines, electric lines, etc.). Tasks such as finding the most efficient travel route, generating travel directions, finding the closest facility, or defining service areas based on travel time become greatly simplified.



ArcView Network Analyst



Rich Functionality

ArcView Network Analyst adds an integrated graphical user interface providing access to the network modeling capabilities including

- Finding the most direct path between two points—What route would provide the shortest travel time from my current location to the nearest library and what are the directions?
- Finding the closest facility—Which ATM is closest to my hotel and how do I get there?
- Finding the optimum route between many points—What is the optimum route for my sales calls and what are the directions to fulfill this route?
- Drive time analysis—What are the three-minute, five-minute, and ten-minute drive zones around a potential fast food restaurant location and how many customers are within those zones?

ArcView Network Analyst can also perform point-to-point routing (known as mid-arc routing, as opposed to endpoint-to-endpoint routing) and can reference local landmarks when reporting route directions. The geographic network data can be based on ARC/INFO® coverages, shapefiles, or CAD drawings.

Developer Tools

ArcView Network Analyst also includes a suite of more advanced network analysis tools that can be accessed through Avenue™ software requests. Developers are able to deliver very sophisticated network analysis applications based on these extended capabilities.

Supported Platforms

ArcView Network Analyst is available for Windows® and UNIX® and requires the base ArcView GIS Version 3.x software.

Corporate Headquarters

ESRI
380 New York Street
Redlands, California
92373-8100 USA
Telephone: 909-793-2853
Fax: 909-793-5953

For more information or to order ArcView GIS, contact ESRI or your authorized ArcView GIS dealer.

1-800-447-9778
(1-800-GIS-XPRT)

Outside the United States, contact your local ESRI distributor. For the number of your distributor, call ESRI at 909-793-2853, ext. 1-1235.

Send E-mail inquiries to **info@esri.com**

Visit ESRI's home page at **www.esri.com**

