



ESRI® Data & Maps 2005

An ESRI White Paper • December 2005

Copyright © 2005 ESRI
All rights reserved.
Printed in the United States of America.

The information contained in this document is the exclusive property of ESRI. This work is protected under United States copyright law and other international copyright treaties and conventions. No part of this work may be reproduced or transmitted in any form or by any means, electronic or mechanical, including photocopying and recording, or by any information storage or retrieval system, except as expressly permitted in writing by ESRI. All requests should be sent to Attention: Contracts and Legal Services Manager, ESRI, 380 New York Street, Redlands, CA 92373-8100, USA.

The information contained in this document is subject to change without notice.

U.S. GOVERNMENT RESTRICTED/LIMITED RIGHTS

Any software, documentation, and/or data delivered hereunder is subject to the terms of the License Agreement. In no event shall the U.S. Government acquire greater than RESTRICTED/LIMITED RIGHTS. At a minimum, use, duplication, or disclosure by the U.S. Government is subject to restrictions as set forth in FAR §52.227-14 Alternates I, II, and III (JUN 1987); FAR §52.227-19 (JUN 1987) and/or FAR §12.211/12.212 (Commercial Technical Data/Computer Software); and DFARS §252.227-7015 (NOV 1995) (Technical Data) and/or DFARS §227.7202 (Computer Software), as applicable. Contractor/Manufacturer is ESRI, 380 New York Street, Redlands, CA 92373-8100, USA.

ESRI, the ESRI globe logo, ArcGIS, ArcView, ArcEditor, ArcInfo, ArcIMS, ArcSDE, StreetMap, ArcGrid, Community, 3D Analyst, ArcGlobe, ArcReader, ArcCatalog, @esri.com, and www.esri.com are trademarks, registered trademarks, or service marks of ESRI in the United States, the European Community, or certain other jurisdictions. Other companies and products mentioned herein are trademarks or registered trademarks of their respective trademark owners.

ESRI Data & Maps 2005

An ESRI White Paper

Contents	Page
Overview.....	1
StreetMap USA Data and Help.....	7
Using StreetMap USA	7
Smart Data Compression Format.....	8
Metadata.....	8
ESRI Data & Maps 2005: Content.....	9
Help.....	9
HTML-Based Help System.....	9
Map Documents, Group Layers, and Background.....	9
Map Documents, Group Layers, Published Map Documents, and Background Folders	9
United States Census.....	10
108th Congressional Districts	10
109th Congressional Districts	10
Counties	10
County Boundaries.....	10
Counties (Generalized)	10
County Population Estimates 2000 (table)	10
County Population Estimates 1990 (table)	10
States.....	11
State Boundaries	11
States (Generalized).....	11
Census Tracts.....	11
Census Block Groups.....	11
Census Block Centroid Populations.....	12
Census and Other Attributes.....	12
Census Feature Class Codes (table).....	12

Contents	Page
Cities	12
National Atlas of the United States.....	12
Cities	12
Urbanized Areas.....	12
Populated Place Areas.....	12
Populated Place Points.....	13
Census Urbanized Areas.....	13
Core Based Statistical Areas.....	13
Telephone Area Code Boundaries	13
ZIP Code Areas (Five-Digit)	13
ZIP Code Areas (Three-Digit)	14
ZIP Code Points	14
United States Hydrography.....	14
Drainage Systems (Generalized).....	14
Lakes (Generalized).....	14
Rivers (Generalized).....	14
Rivers and Streams	14
Water Bodies.....	15
National Atlas of the United States.....	15
Water Feature Areas	15
Water Feature Lines.....	15
United States Landmarks	15
Geographic Names Information System Cultural and Physical Points.....	15
Buildings, Cemeteries, Churches, Golf Locales, Hospitals, Locales, Populated Places, Schools, and Summits	15
Hospitals	16
Parks.....	16
TANA/GDT Landmarks	16
Institutions	16
Large Area Landmarks	16
Park Landmarks	16
Recreation Areas	16
National Atlas of the United States.....	16
Historic Earthquakes.....	16
Volcanoes.....	16
United States Other	17
National Atlas of the United States.....	17
Federal and Indian Land Areas	17
Federal Land Lines	17
Public Land Survey.....	17
State Plane Zones for NAD 1927 and NAD 1983	17

Contents	Page
USGS Topographic Quadrangle Series Indexes.....	17
1:24,000	17
1:100,000	17
1:250,000	17
United States Transportation.....	18
National Atlas of the United States.....	18
Airports	18
Highways	18
Major Highways.....	18
Major Roads.....	18
National Transportation Atlas.....	18
Interstate Highways	18
Railroads	18
TANA/GDT Landmarks	19
Airports	19
Transportation Terminals.....	19
United States StreetMap USA Streets.....	19
Streets.....	19
United States StreetMap USA StreetMap Background	19
Cultural Landmarks	19
Landmark Points	19
Natural Landmarks.....	20
Places	20
Hydrology	20
Runways.....	20
Schools.....	20
USA Background.....	20
Water Boundaries.....	20
World	21
Countries (Generalized).....	21
Countries 2005	21
Countries 1992	21
Administrative Units.....	21
Continents	21
Regions	21
CountryWatch Demographics (table)	21
Country Memberships of Political Organizations (table)	21
Cities	21
Gazetteer	22
Drainage Systems.....	22
Lakes	22

Contents	Page
Rivers	22
World Wildlife Fund Terrestrial Ecoregions	22
World Wildlife Fund Marine Ecoregions	22
Time Zones	22
UTM Zones	22
Latitude and Longitude Grids	23
Named Latitudes and Longitudes	23
Map Background	23
Europe Basemap	23
List of Countries	23
Countries	23
Level 1 Provinces	23
Level 2 Provinces	24
Level 3 Provinces	24
Cities	24
Places	24
Urbanized Areas	24
Major Roads	24
Roads	24
Railroads	24
Railroad Stations	24
Major Water	24
Water	24
Ferries	24
Europe Demography	25
NUTS 0 Demographics	25
NUTS 1 Demographics	25
NUTS 2 Demographics	25
NUTS 3 Demographics	25
Europe (Germany)	25
Germany ZIP Code Areas (PLZgrenzen)	25
One-Digit ZIP Code Zones	25
Two-Digit ZIP Code Regions	25
Five-Digit ZIP Code Areas	25
Canada	26
Provinces	26
Major Cities	26
Middle Cities	26
Municipalities	26
Regional Municipalities	26
Indian Reserves	26
Highways	26

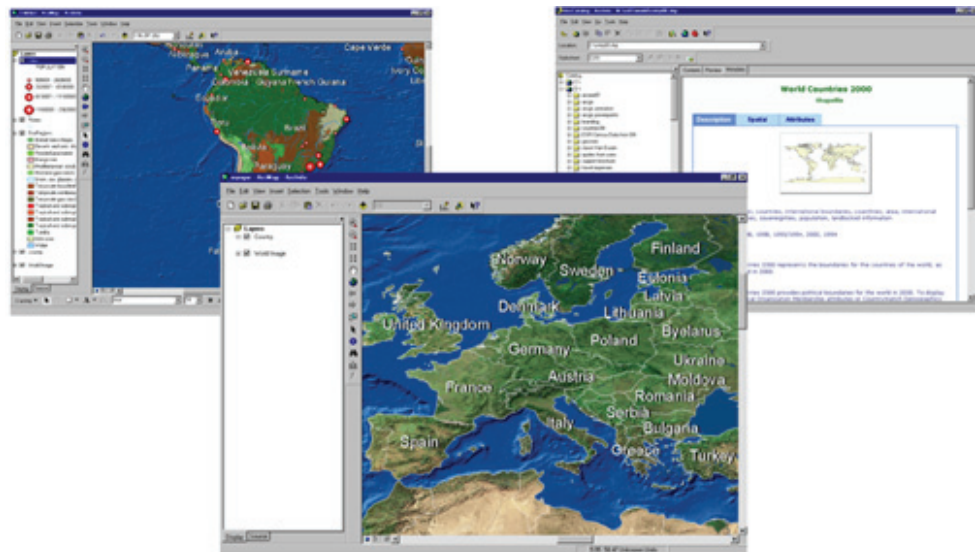
Contents	Page
Railways.....	26
FSA Postal Centroids.....	26
Telephone Area Code Boundaries	27
National Parks.....	27
Provincial Parks	27
Water Bodies.....	27
Mexico	27
States.....	27
Municipalities	27
Cities	27
Urban Areas	27
Roads.....	27
Railroads	27
Rivers and Streams	27
Water Bodies.....	27
Contours.....	27
Image Data—World Elevation	28
Global Digital Elevation Model (ETOPO2)	28
Global Digital Elevation Model (GTOPO30).....	28
World Shaded Relief.....	28
World Topography and Bathymetry	28
Image Data—World Images	28
World Cloud Free	28
World at Night	28
World With Clouds.....	28
World With Ice	29
World WorldSat Color Shaded Relief	29
Image Data—North America.....	29
North America Digital Elevation Model.....	29
North America Shaded Relief.....	29
Image Data—Samples	29
Brasilia, Brasil (61 cm)—DigitalGlobe QuickBird	29
Brasilia, Brasil (2.8 m)—DigitalGlobe QuickBird.....	29
Denver, CO, USA (61 cm)—DigitalGlobe QuickBird.....	29
Giza, Egypt (61 cm)—DigitalGlobe QuickBird	30
Lake Louise, Canada (61 cm)—DigitalGlobe QuickBird	30
Lake Louise, Canada (2.8 m)—DigitalGlobe QuickBird	30
Las Vegas, NV, USA (61 cm)—DigitalGlobe QuickBird.....	30
Las Vegas, NV, USA (15 m)—DigitalGlobe Millennium Mosaic.....	30
Las Vegas, NV, USA (6 inch)—AirPhotoUSA.....	30
Miami, FL, USA (61 cm)—DigitalGlobe QuickBird.....	30

Contents	Page
Prague, Czech Republic (61 cm)—DigitalGlobe QuickBird....	30
Sydney, Australia (61 cm)—DigitalGlobe QuickBird.....	30
Tokyo, Japan (61 cm)—DigitalGlobe QuickBird.....	31
Image Data—Global Imagery.....	31
Africa (150 m)—EarthSat NaturalVue Global Landsat Mosaic.....	31
Asia-East (150 m)—EarthSat NaturalVue Global Landsat Mosaic.....	31
Asia-West (150 m)—EarthSat NaturalVue Global Landsat Mosaic.....	31
Australia (150 m)—EarthSat NaturalVue Global Landsat Mosaic.....	31
Europe (150 m)—EarthSat NaturalVue Global Landsat Mosaic.....	31
North America-North (150 m)—EarthSat NaturalVue Global Landsat Mosaic.....	31
North America-South (150 m)—EarthSat NaturalVue Global Landsat Mosaic.....	31
South America (150 m)—EarthSat NaturalVue Global Landsat Mosaic.....	32

ESRI Data & Maps 2005

Overview ESRI® Data & Maps 2005 is an annual set of map data that is bundled with ArcGIS® software products such as ArcGIS Desktop (ArcView®, ArcEditor™, and ArcInfo®). It is preconfigured to work with ESRI's software products and contains many types of map data at many scales of geography from several sources including commercial and governmental. For 2005 there are new and updated datasets, map documents (.mxd), and metadata. It is reorganized and more usable, containing three DVDs and five CDs. The vector data is provided in ESRI's Smart Data Compression (SDC) format. The raster data, which includes all the previous ArcGlobe™ data, is in various formats. StreetMap™ USA data, included on DVD and CD, is based on TIGER® 2000 data provided by Tele Atlas North America, Inc. (TANA) (formerly GDT), that is improved by Tele Atlas and ESRI.

The five *ESRI Data & Maps* discs contain World, Europe, Canada, Mexico, United States, and image and elevation datasets. The *ESRI Data & Maps and StreetMap USA* DVD contains all the ESRI Data & Maps vector datasets and the StreetMap USA datasets. The two *StreetMap USA* CDs contain the StreetMap USA datasets. The entire set of map data can be read directly from the three DVDs, and all the United States, World, Europe, Canada, and Mexico vector datasets can also be read directly from the CDs. Each dataset and its associated ArcGIS layers have metadata files (.xml) that provide content, quality, and other characteristics. The metadata can be viewed in ArcGIS and used with the ArcIMS® Metadata Server. A stand-alone Hypertext Markup Language (HTML)-based help system is provided on the discs, providing help topics on ESRI Data & Maps and StreetMap USA.



A brief description of each disc that comprises ESRI Data & Maps 2005 follows.

- *ESRI Data & Maps—United States* CDs 1 and 2 contain United States data that is organized into five categories—census, hydrography, landmarks, transportation, and other.
- *ESRI Data & Maps—World, Europe, Canada, and Mexico* CD contains World, Europe, Canada, and Mexico data.
- *ESRI Data & Maps and StreetMap USA* DVD contains the StreetMap USA datasets and files; the World, Europe, Canada, and Mexico data; and the United States data that includes the U.S. datasets needed to support the StreetMap functionality and features.
- *ESRI Data & Maps—Image Data* DVD contains raster data of the world and North America plus high-resolution sample images.
- *ESRI Data & Maps—Global Imagery* DVD contains global imagery raster data at 150-meter resolution.
- *StreetMap USA* CDs 1 and 2 contain the compressed StreetMap USA datasets that cannot be read directly from the CDs but must be installed (this is necessary only if you do not have access to a DVD drive). The StreetMap USA data does not fit on just one CD, so it must be installed in one place on your hard drive. For instructions on installing this data, see the Readme.txt file found on *StreetMap USA* CD 1.

In addition, these DVDs and CDs contain Data & Maps and StreetMap USA HTML-based help systems and map documents, group layers (.lyr), published map documents (.pmf), and background folders.

The Data & Maps HTML-based help system provides help topics about ESRI Data & Maps and what is new, redistribution rights, StreetMap USA, and metadata for each dataset. Please review the redistribution rights help topic before redistributing any datasets. The StreetMap USA HTML-based help system provides help topics on using the StreetMap functionality and the StreetMap USA data.

The geographies—World, Europe, Canada, Mexico, United States, North America, and Global—are provided with map documents, group layers, published map documents, and background folders. The group layer contains the geography's datasets that are symbolized and labeled for display at scales ranging from nationwide to local areas. The map document contains the same group layer prepackaged within an existing map document. The published map document is a published version of the map document provided for ArcReader™ users. The background folder contains additional datasets that support the map documents and group layers. These maps are a great way to view the data and are readily usable by anyone with ArcGIS Desktop.

The vector and table datasets are in SDC 2 format. The nonvector datasets are in ESRI ArcGrid™ format and various image formats such as JPEG 2000 and ERDAS IMAGINE®. Each dataset has a metadata document (.xml) providing complete documentation for the dataset as well as one or more associated ArcGIS layer files

displaying symbols and classifications for the dataset. Each ArcGIS layer has a metadata file providing complete documentation for the ArcGIS layer. Each SDC dataset also includes a projection file (.prj) storing the coordinate system information. Each dataset may also have other supporting files.

ESRI Data & Maps contains many types of map data at many scales of geography and is useful for general-purpose basemaps and for more specific uses. Whether you need to create basemaps, conduct market analyses, or profile your customers, it provides accurate data to meet your needs. The data can make a new user productive and the software useful as soon as it is installed. For each geography included, the significant basemap layers are boundaries, cities, rivers, and roads. This basemap information is available for the World, Canada, Europe, Mexico, and the United States. In addition, where possible, demographic data is provided for subnational boundaries such as states, counties, or their equivalents. World, Europe, and Mexico datasets are in the World Geodetic System of 1984 (WGS84) datum. United States and Canada datasets are in the North American Datum of 1983 (NAD83).

For 2005, many existing datasets for all geographies were updated to improve consistency in the attributes between the datasets. This included changes to attribute names as well as changes to attribute code values. In addition, attributes were added to some datasets to assist in the display of the map documents.

In the United States, many datasets have been updated to their most current versions. This includes the replacement of all previous GDT layers with their recent Tele Atlas/GDT versions. In addition, all the Geographic Names Information System (GNIS) data, National Hydrography Dataset (NHD) water features, and many of the National Atlas of the United States layers were also updated. At the world level, country codes have been adjusted to reflect the current political state of the world. For Europe, all AND International Publishers N.V. basemap layers have been updated, and the socioeconomic and demographic thematic data is now available at the Nomenclature des Unités Territoriales Statistiques (NUTS) 0, 1, 2, and 3 levels. In Canada and Mexico, most of the data layers have also been updated. A variety of minor corrections and enhancements were also made to many of the other Data & Maps 2005 datasets.

For the world, there are cities, countries from 1992 and today, and subcountry administrative boundaries. Many helpful world reference datasets include time zones, Universal Transverse Mercator (UTM) zones, gazetteer, continents, regions, latitude and longitude grids, a map background, and country memberships in political organizations (table). World datasets of special interest include World Ecoregions from the World Wildlife Fund Conservation Science Program and CountryWatch Demographics (table) with more than 40 attributes on geography, population, social indicators, economy, energy, and the environment.

Data for Europe includes 14 basemap layers from AND International Publishers N.V.; four map layers of socioeconomic and demographic data at the NUTS 0, 1, 2, and 3 levels from Michael Bauer Research GmbH and EuroGeographics; and from ESRI Geoinformatik GmbH (ESRI Germany), one-digit, two-digit, and five-digit ZIP Code areas (PLZgrenzen) for Germany.

The AND data is a comprehensive set of basemap data for Europe from large-scale source materials that provides high-quality layers for cartographic presentation and basic geographic analysis. This data includes country and province boundaries, water features,

cities, urbanized areas, a connected road network, railroads, railroad stations, ferries, and nearly 24,000 named places.

The NUTS 0-, 1-, 2-, and 3-level datasets result from socioeconomic and demographic data collected across Europe by Michael Bauer Research and boundary data provided by EuroGeographics and, in some areas, by AND International Publishers N.V. Michael Bauer Research established the data by reviewing relevant regional data and projecting the respective trends. To provide the best possible value to the user regarding comparability, all country results were projected by mathematical methods to the required geographical level, homogeneous base years, categories (e.g., age bands), and currency (Euro). The datasets provide attributes for name, NUTS codes, population size, population by sex, population by age groups, households, average number of persons per household, population density, stock of dwellings, purchasing power, gross domestic product, and area.

For Canada, data from DMTI Spatial Inc. provides 13 datasets and includes the new territory, Nunavut. The datasets include provinces, cities, towns, municipalities, regional municipalities, Forward Sortation Area (FSA) postal centroids, generalized highways, railroads, water bodies, national parks, provincial parks, Indian reserves, and telephone area code boundaries.

For Mexico, data from Sistemas de Información Geográfica, S.A. de C.V. (SIGSA) provides nine datasets covering Mexico with great detail. The datasets include states, cities, municipalities, urban areas, roads, railroads, rivers and streams, water bodies, and contours.

A large amount of data is included for the United States. United States refers to the 50 states and the District of Columbia with nearly half of the datasets containing Puerto Rico and many with U.S. Virgin Islands, commonwealths, territories, and freely associated states. There are 65 datasets for the United States organized into the five categories—census, hydrography, landmarks, transportation, and other—plus the StreetMap USA data, that is now located beside these five categories.

For the census category, the following datasets are included: U.S. Census tracts, block groups (BG), block centroid populations, urbanized areas, and feature class codes; state and county boundaries, boundary lines, and generalized versions of these boundaries; cities, populated place areas, and points; Core Based Statistical Areas (CBSA); ZIP Codes™ (five-digit, three-digit, and points); 108th and 109th congressional districts; 2000 and 1990 county population estimates; telephone area code boundaries; and National Atlas of the United States cities and urbanized areas.

For the hydrography category, the following datasets are included: drainage systems, lakes, and rivers; rivers and streams and water bodies from the NHD; and National Atlas of the United States water feature lines and areas.

For the landmarks category, the following datasets are included: parks and Health Forum American Hospital Association (AHA) hospital locations; GNIS cultural and physical points of buildings, cemeteries, churches, golf locales, hospitals, locales, populated places, schools, and summits; TANA/GDT institutions, large area landmarks, park landmarks, and recreation areas; and National Atlas of the United States historic earthquakes and volcanoes.

For the transportation category, the following datasets are included: highways, major highways, and major roads; TANA/GDT airports and transportation terminals; National Atlas of the United States airports; and National Transportation Atlas interstate highways and railroads.

For the other category, the following datasets are included: NAD 1983 and 1927 State Plane Zones; National Atlas of the United States federal land lines, federal and Indian land areas, and public land survey; and United States Geological Survey (USGS) Topographic Quadrangle Series indexes (1:24,000, 1:100,000, and 1:250,000).

For the United States, all layers of census geography are current with Census 2000. States, counties, and core based statistical areas are current with 2002 census TIGER/Line® boundaries. Counties, census tracts, block groups, and block centroids reflect the addition of Broomfield County, Colorado, and the deletion of Clifton Forge, an independent city in Virginia. All census-derived attributes are from U.S. Census 2000 Summary File 1 (SF1) and Public Law 94-171 files and/or Census 2000 TIGER/Line documentation.

Each year, ESRI Data & Maps includes the latest data from Tele Atlas North America, Inc. This includes states, counties, Core Based Statistical Areas, populated place areas, ZIP Codes (five-digit, three-digit, and points), census tracts and block groups, telephone area codes, institutions, large area landmarks, park landmarks, recreation areas, airports, major roads, and transportation terminals.

Boundaries for the United States include state and county boundaries, boundary lines, and generalized versions of these boundaries; core based statistical areas and ZIP Code boundaries; and U.S. Census Bureau census tracts, block groups, and urbanized areas. A selection of 2000 Census attributes from SF1 is included with basic demographic information for state and county boundaries, U.S. Census Bureau census tracts, and block groups. In addition, 2004 population estimates from ESRI Community™ Demographics are included for each of these boundary datasets to enable basic evaluation of growth and decline for an area as small as a neighborhood. Attributes from the 1997 Census of Agriculture from the U.S. Department of Agriculture (USDA) are provided for states and counties. For the most detailed assessment of where people live, block centroids and their 2000 populations are included for the more than eight million census blocks.

Basemap information for the United States includes the detailed boundary datasets as well as cities, populated places, and a number of line and point feature sources. Major roads from TANA/GDT, including federal, state, and county highways; highways and major highways from StreetMap USA Streets; and railroads from the National Transportation Atlas, provide a detailed look at the transportation network. More than three million water features from the current National Hydrography Dataset are provided in two national datasets for a detailed and comprehensive water reference. Water bodies that include lakes as small as six acres and rivers as narrow as 100 feet wide are represented as polygons. Rivers and streams are interconnected, including through bodies of water, and in general include streams longer than one mile. In contrast, and with each generalized for small-scale maps, there are drainage systems, lakes, and rivers.

Ten datasets incorporating cultural, administrative, and natural geographic content from the National Atlas of the United States are included and many contain data for Puerto Rico and the U.S. Virgin Islands. The cultural datasets include airports, cities and towns, and urbanized areas. The administrative datasets include federal and Indian lands

(e.g., Bureau of Indian Affairs and Tennessee Valley Authority), linear federally owned land features (e.g., national parkways and wild and scenic rivers), and public land survey (e.g., donation lands, land grants, and private and public surveys of public lands). The natural datasets include linear water features (e.g., aqueducts, canals, intercoastal waterways, and streams), areal water features (e.g., bays, glaciers, lakes, and swamps), historic earthquakes, and volcanoes.

Other data for the United States includes airports, 108th and 109th Congressional Districts, State Plane Zones, Topographic Quadrangle Series indexes, parks, and large-area landmarks. Airports include airport boundaries and the layout of the runways of the airports. The Congressional Districts represent the boundaries for the U.S. Congressional Districts. State Plane Zones show the approximation of the actual State Plane Coordinate System Zone boundaries for each datum. Topographic Quadrangle Series indexes represent the geographic extents of the 1:24,000, 1:100,000, and 1:250,000 USGS topographic maps. Parks identify large units of public land including all national parks, national forests, most state parks, and a number of local parks. Large-area landmarks include boundaries such as military lands, prisons, and educational lands.

Point features include hospitals from the Health Forum American Hospital Association Annual Survey Database, landmark locations from TANA/GDT, cultural and physical features from USGS, and population and housing data from U.S. Census 2000 Summary File 1. TANA/GDT institutions, transportation terminals, and recreation areas are named locations and can be used for reference when making a map of an urban area. The latest cultural and physical features from the USGS Geographic Names Information System are divided into nine datasets because of the number of features involved. The completeness of this data is dependent on the currency of the map the features were drawn from, but often this data can be a source of features that are not found in other locations. U.S. Census 2000 Summary File 1 was used to create cities and populated places.

The image and elevation data has been expanded to contain all the data that was previously supplied with ArcGIS 3D Analyst™ in the ArcGlobe Data media kit. This includes EarthSat® natural-color, Landsat® 7-derived, 150-meter (492 ft.) resolution global imagery covering the entire land area of the earth except the high-latitude polar regions and Antarctica as well as 13 high-resolution sample images from DigitalGlobe and AirPhotoUSA in nine areas from around the globe.

The elevation and image data includes the North America Digital Elevation Model, North America Shaded Relief, Global Digital Elevation Model (ETOPO2), Global Digital Elevation Model (GTOPO30), World Shaded Relief, and World Topography and Bathymetry. These datasets provide basemap layers for displaying elevation for geographic analysis on global, continental, and national scales. Global Digital Elevation Model (ETOPO2) is from the National Geophysical Data Center (NGDC). Global Digital Elevation Model (GTOPO30) is from the USGS Earth Resources Observation Systems (EROS) Data Center. Four wonderful images from the National Aeronautics and Space Administration (NASA) Visible Earth program are World Cloud Free, World at Night, World With Clouds, and World With Ice. Each results from mosaicking hundreds of individual satellite images into a complete image of the earth. ESRI georeferenced these datasets to a real-world coordinate system. World WorldSat Color Shaded Relief provides land and ocean floor relief at a cell size of four square kilometers (at the equator).

StreetMap USA Data and Help

StreetMap USA consists of two parts—the data known as StreetMap USA and the StreetMap functionality (formerly an extension) that is now part of the core functionality of ArcGIS. StreetMap USA is provided as part of ESRI Data & Maps 2005 and is located within the USA folder. No license is required to use this data. With the use of StreetMap USA and ArcGIS StreetMap functionality, users can find addresses, quickly create intelligent maps, and perform simple point-to-point or optimized routing across nationwide street networks.

The *ESRI Data & Maps and StreetMap USA* DVD by itself or the two *ESRI Data & Maps—United States* CDs together with the two *StreetMap USA* CDs contain the detailed streets, all United States vector datasets from ESRI Data & Maps, and the other datasets and files that are needed to support the ArcGIS StreetMap functionality of nationwide (U.S.) street map display, address geocoding, routing, and driving directions. The detailed streets data is based on TIGER 2000 data enhanced by ESRI and Tele Atlas and prepared for routing within the StreetMap Find Route dialog box. The U.S. datasets needed to support the StreetMap USA functionality include states, cities, airports, drainage, railroads, parks, local landmarks, and more. The *Readme.txt* file on *StreetMap USA* CD 1 has a list of the datasets used in the StreetMap USA map document.

For more information, the StreetMap USA HTML-based help system provides help topics on using the StreetMap functionality and the StreetMap USA data. Open the *StreetMap.htm* file located on any DVD or CD to view the help topics. Additional information about the StreetMap USA data and its redistribution rights is available in the metadata documentation for each dataset (.xml) and in the Data & Maps HTML-based help system, which can be accessed by opening the *help.htm* file located on any disc.

Using StreetMap USA

StreetMap USA provides a group layer, map document, published map document, address locators, routing service, and all the associated StreetMap USA datasets for these files to work within ArcGIS 9.1. The group layer (*StreetMap USA.lyr*) contains several layers that have been symbolized and labeled for display at five scale levels: national, state, regional, local, and detail. The layers display the appropriate types of features within each scale level. The map document (*StreetMap USA.mxd*) includes the same group layer prepackaged within an existing map document. You can zoom to any area of the StreetMap USA map document and convert the compressed street data to other types of feature classes such as shapefiles or geodatabases. The published map document (*StreetMap USA.pmf*) is a published version of the map document provided for ArcReader users. The two address locators (*StreetMap USA.loc* and *StreetMap USA Plus AltNames.loc*) provide two levels of nationwide geocoding abilities to the StreetMap functionality. Use either address locator to geocode addresses in the United States by interactively matching a single address or by batch matching from a file of addresses. ArcSDE® users can also geocode against the street data by first creating a new address locator in ArcSDE using the StreetMap USA style. Within the StreetMap Find Route dialog box you can set the routing service and address locator, then define stops, map the quickest or shortest route, determine the best sequence to visit multiple stops, and view the driving directions.

The StreetMap USA map document is an integrated, interactive map display that serves as a general-purpose basemap for performing routing, driving directions, geocoding, and cartographic and thematic display of the StreetMap USA datasets. The map document supports seamless ad hoc panning and zooming from the full U.S. extent down to the detailed streets level. It displays various road categories, such as interstate highways and local roads, and other features including state boundaries, lakes, landmarks, and airports.

The thematic group layers can be easily expanded to show the various datasets arranged by display scale or simply turned on or off. The streets data is presorted to draw the road classes in the correct order for cartographic display. Dynamic label placement is used throughout. The ArcGIS 9 Layer Drawing Option has been implemented for a number of individual layers including city points, landmark points, and streets.

Smart Data Compression Format

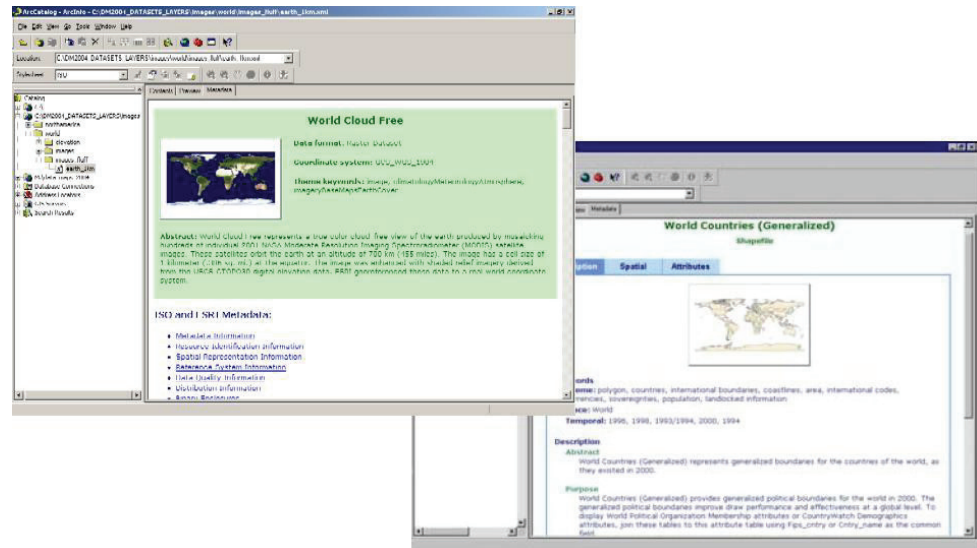
Smart Data Compression is a highly compressed vector format created by ESRI that is readable directly by ArcGIS Desktop (including ArcReader) and ArcIMS Route Server. All vector and table datasets in ESRI Data & Maps (including the StreetMap USA datasets) are in SDC 2 format. The SDC 2 format advantages are high compression, fast data retrieval, map and tabular data support, security features, and support for geocoding and routing.

Metadata

Each dataset and its associated ArcGIS layer files are fully documented with metadata. The metadata furnishes extensive general and technical characteristics of the dataset and layer files. The metadata displays a thumbnail, which is a small graphic image of the dataset. The dataset metadata provides identification, originator, publisher, description, temporal/currency, status, spatial extent, keywords, accessibility (includes the redistribution rights), data quality, condition, lineage, editing, spatial data organization, spatial reference, entity and attribute descriptions, distribution, dataset size, and metadata reference information. The layer metadata provides identification, originator, publisher, description, status, spatial extent, keywords, accessibility, distribution, and metadata reference information.

The metadata follows two standards—the Content Standard for Digital Geospatial Metadata (CSDGM) from the Federal Geographic Data Committee and the International Organization for Standardization (ISO) document 19115 Geographic Information—Metadata. In addition, ArcGIS has the capability to automatically manage and update metadata as the data changes. To make metadata more accessible and useful on a daily basis when browsing, searching, and managing data, ESRI has defined additional elements to support that process and to document characteristics of datasets that are not addressed by the two standards. These elements are present in the metadata and are defined in the [ESRI Profile of the CSDGM](#).

The metadata is provided as files for each dataset and layer in Extensible Markup Language (XML) and HTML formats (datasets only). The metadata in XML can be viewed in ArcGIS and can also be used with the ArcIMS Metadata Server. The metadata in HTML can be viewed within the HTML-based help system with any HTML browser.



The metadata includes descriptions about the data (e.g., source, content, quality, spatial coordinates, and information about the individual attributes).

ESRI Data & Maps 2005: Content

Help

HTML-Based Help System

Each disc contains a stand-alone Data & Maps HTML-based help system (help.htm and the help folder) that provides help topics about ESRI Data & Maps and what is new, redistribution rights, StreetMap USA, and metadata for each dataset. Each disc also includes the StreetMap USA HTML-based help system (StreetMap.htm and the help folder) that provides help topics on using the StreetMap functionality and the StreetMap USA data. The help topics and metadata in HTML can be viewed within the HTML-based help system with any HTML browser.

Map Documents, Group Layers, and Background

Map Documents, Group Layers, Published Map Documents, and Background Folders

The geographies—Canada, Europe, Mexico, United States, and World—plus the geographies and samples on *ESRI Data & Maps—Image Data* and *ESRI Data & Maps—Global Imagery* DVDs are provided with map documents, group layers, published map documents, and background folders. The group layer contains the geography's datasets that are symbolized and labeled for display at scales ranging from nationwide to local areas. The map document contains the same group layer prepackaged within an existing map document. There are three basic types of map documents—basemap, thematic, and image overlay map. The published map document is a published version of the map document provided for ArcReader users. The background folder contains additional datasets that support the functionality of the map documents, group layers, and published map documents.

United States Census

108th Congressional Districts	U.S. 108th Congressional Districts represents the political boundaries for the U.S. 108th Congressional Districts. The data provides the locations of congressional districts primarily for national planning applications. This Congress began January 2003 and ended January 2005.
109th Congressional Districts	U.S. 109th Congressional Districts represents an interim version of the political boundaries for the U.S. 109th Congressional Districts. The data provides the locations of congressional districts primarily for national planning applications. This Congress began January 2005 and ends January 2007.
Counties	U.S. Counties represents the counties of the United States in the 50 states, the District of Columbia, and Puerto Rico. U.S. Counties provides detailed boundaries that are consistent with the U.S. Census Tracts, U.S. Census Block Groups, and U.S. States datasets and are effective at state, county, and local levels. Census attributes for demographic and housing detail are from the U.S. Census 2000 Summary File 1. The 2004 population count estimate is included from ESRI Community Demographics. Agriculture attributes are from the 1997 Census of Agriculture (USDA).
County Boundaries	U.S. County Boundaries represents the boundary lines of the counties of the United States. The boundaries are effective for cartographic display at state, county, and local levels.
Counties (Generalized)	U.S. Counties (Generalized) represents the counties of the United States in the 50 states and the District of Columbia. This dataset is generalized to improve draw performance and to be used effectively at a national level. Census attributes for demographic and housing detail are from the U.S. Census 2000 Summary File 1. The 2004 population count estimate is included from ESRI Community Demographics. Agriculture attributes are from the 1997 Census of Agriculture (USDA).
County Population Estimates 2000 (table)	U.S. County Population Estimates 2000 (table) represents the county population attributes (2000–2002) from the Population Estimates Branch, U.S. Census Bureau. The program promotes the cooperation between the states and the United States Census Bureau. These population estimates contain revisions of estimates from previous years and the results of special censuses and test censuses conducted by the Census Bureau. These population estimates are for 3,141 counties or county equivalents. For analysis, this data can be displayed with U.S. Counties or U.S. Counties (Generalized) using FIPS as the common field.
County Population Estimates 1990 (table)	U.S. County Population Estimates 1990 (table) represents the county population attributes (1990–1999) from the Population Estimates Program, Population Division, U.S. Census Bureau. The program promotes the cooperation between the states and the United States Census Bureau. These population estimates contain revisions of estimates from previous years and the results of special censuses and test censuses conducted by the Census Bureau. These population estimates are for 3,141 counties or county equivalents. County boundary changes have occurred since the 1990 census in Alaska, Maryland, and Virginia. For analysis, this data can be displayed with U.S. Counties or U.S. Counties (Generalized) using FIPS as the common field.

States	<p>U.S. States represents the 50 states, the District of Columbia, and Puerto Rico. U.S. States provides detailed boundaries that are consistent with the U.S. Census Tracts, U.S. Census Block Groups, and U.S. Counties datasets and are effective at state and county levels. Census attributes for demographic and housing detail are from the U.S. Census 2000 Summary File 1. The 2004 population count estimate is included from ESRI Community Demographics. Agriculture attributes are from the 1997 Census of Agriculture (USDA).</p>
State Boundaries	<p>U.S. State Boundaries represents the boundary lines of the states of the United States. The boundaries are effective for cartographic display at state and county levels.</p>
States (Generalized)	<p>U.S. States (Generalized) represents the 50 states and the District of Columbia. This dataset is generalized to allow effective use at a national level. Census attributes for demographic and housing detail are from the U.S. Census 2000 Summary File 1. The 2004 population count estimate is included from ESRI Community Demographics. Agriculture attributes are from the 1997 Census of Agriculture (USDA).</p>
Census Tracts	<p>U.S. Census Tracts represents the U.S. Census tracts of the United States in the 50 states and the District of Columbia. The boundaries are consistent with U.S. Counties, U.S. States, and U.S. Census Block Groups datasets. Census attributes for demographic and housing detail are from the U.S. Census 2000 Summary File 1. The 2004 population count estimate is included from ESRI Community Demographics.</p> <p>"Tract" is defined as a small, relatively permanent statistical subdivision of a county or statistically equivalent entity, delineated for data presentation purposes by a local group of census data users or the geographic staff of a regional census center in accordance with Census Bureau guidelines. Designed to be relatively homogeneous units with respect to population characteristics, economic status, and living conditions at the time they are established, census tracts generally contain between 1,000 and 8,000 people with an optimum size of 4,000 people. Census tract boundaries are delineated with the intention of being stable over many decades, so they generally follow relatively permanent visible features. However, they may follow governmental unit boundaries and other invisible features in some instances; the boundary of a state or county (or statistically equivalent entity) is always a census tract boundary.</p>
Census Block Groups	<p>U.S. Census Block Groups represents the U.S. Census block groups of the United States. The boundaries are consistent with U.S. Counties, U.S. States, and U.S. Census Tracts datasets. Census attributes for demographic and housing detail are from the U.S. Census 2000 Summary File 1. The 2004 population count estimate is included from ESRI Community Demographics.</p> <p>A block group is a combination of census blocks that is a subdivision of a census tract. A block group consists of all blocks whose numbers begin with the same digit in a given census tract. The block group is the lowest level of geography for which the U.S. Census Bureau has tabulated sample data in the 2000 census.</p>

Census Block Centroid Populations	U.S. Census Block Centroid Populations represents the population of the U.S. Census block centroids for the United States. U.S. Census blocks are the smallest geographic entities within a county for which the Census Bureau tabulates population—bounded on all sides by visible features, such as streets, streams, and railroad tracks, and by invisible boundaries such as city, town, and county limits. This data is the actual census block centroids as defined by the U.S. Census Bureau from the Census 2000 Public Law 94-171 population files. Census attributes—POP2000, HSE_UNITS, and HOUSEHOLDS—are from the U.S. Census 2000 Summary File 1.
Census and Other Attributes	The U.S. Census and other attributes described here are present in many U.S. datasets. U.S. Census attributes for demographic and housing detail are from the U.S. Census 2000 Summary File 1. They include a selection of 36 descriptive attributes focusing on total population, race, gender, age, households, families, and housing units. These attributes, or a selection of them, are included in the U.S. Census Tracts, Block Groups, Block Centroid Populations, Cities, Populated Places, States, and Counties datasets. U.S. Census attributes for population and location are from the U.S. Census 2000 Population and Housing Public Law 94-171 file. The 2004 population count estimate is included from ESRI Community Demographics. This attribute is included in U.S. Counties, States, Core Based Statistical Areas, Census Tracts and Block Groups, and ZIP Code Areas and Points.
Census Feature Class Codes (table)	U.S. Census Feature Class Codes (CFCC) (table) represents the United States Census Bureau feature classifications. The Census feature class codes (also called FCC) are used in many datasets. This data can be displayed with any dataset containing the CFCC or FCC attribute and using it as the common field.
Cities	U.S. Cities represents locations for cities within the United States with populations of 10,000 or greater, all state capitals, and the national capital. Census attributes for demographic and housing detail are from the U.S. Census 2000 Summary File 1.
National Atlas of the United States	
<i>Cities</i>	U.S. National Atlas Cities represents cities and towns in the United States, Puerto Rico, and the U.S. Virgin Islands. U.S. National Atlas Cities provides information about the locations, names, populations, and administrative status of cities and towns.
<i>Urbanized Areas</i>	U.S. National Atlas Urbanized Areas represents urban areas in the United States derived from the urban areas layer of the Digital Chart of the World. U.S. National Atlas Urbanized Areas provides information about the locations, names, and populations of urbanized areas.
Populated Place Areas	U.S. Populated Place Areas represents populated place areas that include census-designated places, consolidated cities, and incorporated places within the United States identified by the U.S. Census Bureau. U.S. Populated Place Areas provides areal locations for populated places including attributes—name, FIPS code, census class, area, and selected demographic data from the U.S. Census 2000 Summary File 1.

Populated Place Points	U.S. Populated Place Points represents populated places that include census-designated places, consolidated cities, and incorporated places within the United States identified by the U.S. Census Bureau. U.S. Populated Place Points provides locations for populated places including attributes—name, FIPS code, census class, area, and selected demographic data from the U.S. Census 2000 Summary File 1.
Census Urbanized Areas	U.S. Census Urbanized Areas represents the Census 2000 Urbanized Areas (UA) and Urban Clusters (UC). A UA consists of contiguous, densely settled census block groups and census blocks that meet minimum population density requirements (1,000 ppsm/500 ppsm), along with adjacent densely settled census blocks that together encompass a population of at least 50,000 people. A UC consists of contiguous, densely settled census BGs and census blocks that meet minimum population density requirements, along with adjacent densely settled census blocks that together encompass a population of at least 2,500 people but fewer than 50,000 people. The dataset covers the 50 states plus the District of Columbia within the United States. U.S. Census Urbanized Areas provides information about the locations, names, population, housing, and urban codes of urbanized areas.
Core Based Statistical Areas	<p>U.S. Core Based Statistical Areas represents geographic entities, defined by the United States Office of Management and Budget for use by federal statistical agencies, based on the concept of a core area with a large population nucleus plus adjacent communities having a high degree of economic and social integration with that core.</p> <p>A CBSA consists of a county containing an Incorporated Place or Census Designated Place with a population of at least 10,000 along with any adjacent counties that have at least 25 percent of employed residents of the county who work in the CBSA's core or central county. CBSAs are categorized as being either Metropolitan or Micropolitan. Each Metropolitan Statistical Area must have at least one urbanized area of 50,000 or more inhabitants. Each Micropolitan Statistical Area must have at least one urban cluster of at least 10,000 but less than 50,000 population. U.S. Core Based Statistical Areas provides the names and types of Core Based Statistical Areas. The 2004 population count estimate is included from ESRI Community Demographics.</p>
Telephone Area Code Boundaries	U.S. Telephone Area Code Boundaries represents the telephone area codes for the United States. They are also known as Numbering Plan Areas. U.S. Telephone Area Code Boundaries provides information about the locations, current and previous area codes, method used to create the new area codes, and dates the new or previous area codes become effective or expire. The boundaries are current as of October 2004.
ZIP Code Areas (Five-Digit)	<p>U.S. ZIP Code Areas (Five-Digit) represents five-digit ZIP Code areas used by the U.S. Postal Service to deliver mail more effectively. The first digit of a five-digit ZIP Code divides the country into 10 large groups of states numbered from 0 in the northeast to 9 in the far west. Within these areas, each state is divided into an average of 10 smaller geographical areas, identified by the second and third digits. These digits, in conjunction with the first digit, represent a sectional center facility or a mail processing facility area. The fourth and fifth digits identify a post office, station, branch, or local delivery area.</p> <p>U.S. ZIP Code Areas provides area, post office name, and population for each ZIP Code area in the United States. The 2004 population count estimate is included from ESRI Community Demographics. The 2000 population is summed from the populations of the Census Bureau Block polygon centroids that fall within each ZIP Code area. U.S. ZIP</p>

Code Areas is from TANA/GDT and based on November 2004 data derived from U.S. Postal Service data and other sources.

ZIP Code Areas (Three-Digit)

U.S. ZIP Code Areas (Three-Digit) represents the first three digits of a ZIP Code. The first digit of a five-digit ZIP Code divides the country into 10 large groups of states numbered from 0 in the northeast to 9 in the far west. Within these areas, each state is divided into an average of 10 smaller geographical areas, identified by the second and third digits. These digits, in conjunction with the first digit, represent a sectional center facility or a mail processing facility area. These areas are serviced by the U.S. Post Office Sectional Center Facility (SCF). Note that a single SCF often services multiple, three-digit areas.

U.S. ZIP Code Areas (Three-Digit) provides area and population for each three-digit ZIP Code area in the United States. The 2004 population count estimate is included from ESRI Community Demographics. The 2000 population is summed from the populations of the Census Bureau Block polygon centroids that fall within each ZIP Code area. U.S. ZIP Code Areas (Three-Digit) is from TANA/GDT and based on November 2004 data derived from U.S. Postal Service data and other sources.

ZIP Code Points

U.S. ZIP Code Points represents the five-digit ZIP Code areas as points by placing their location using delivery-based centroids, plus all ZIP Codes that have no area and are represented as points rather than areas such as post office box ZIP Codes and unique ZIP Codes (single site, building, or organization). U.S. ZIP Code Points provides the post office name, type, and area for each ZIP Code location in the United States. The 2004 population count estimate is included from ESRI Community Demographics. U.S. ZIP Code Points are from TANA/GDT and based on November 2004 data derived from U.S. Postal Service data and other sources.

United States Hydrography

Drainage Systems (Generalized)

U.S. Drainage Systems (Generalized) represents the major drainage systems within the United States. This dataset is generalized to allow effective use at a national level.

Lakes (Generalized)

U.S. Lakes (Generalized) represents the major lakes within the United States. This dataset is generalized to allow effective use at a national level.

Rivers (Generalized)

U.S. Rivers (Generalized) represents the major rivers within the United States. This dataset is generalized to allow effective use at a national level.

Rivers and Streams

U.S. Rivers and Streams represents detailed rivers and streams in the United States. The dataset provides a database of linear water features that interconnects and identifies the stream segments or reaches that comprise the surface water drainage system of the United States. It includes information about the names, types, path levels, and lengths of the rivers and streams. The detailed and comprehensive rivers and streams are from the National Hydrography Dataset by the U.S. Geological Survey in cooperation with the U.S. Environmental Protection Agency.

Water Bodies U.S. Water Bodies represents the major lakes, reservoirs, large rivers, lagoons and estuaries in the United States. The dataset provides a database of areal water features that identifies the water bodies or reaches that comprise the surface water drainage system of the United States. It includes information about the names, types, and areas of the water bodies. The detailed and comprehensive water bodies are from the National Hydrography Dataset by the U.S. Geological Survey in cooperation with the U.S. Environmental Protection Agency.

National Atlas of the United States

Water Feature Areas U.S. National Atlas Water Feature Areas represents the water feature areas (e.g., glaciers, lakes, reservoirs, and swamps) of the United States. It includes information about the names, types, areas, and locations of the water feature areas.

Water Feature Lines U.S. National Atlas Water Feature Lines represents the linear water features (e.g., aqueducts, canals, intracoastal waterways, and streams) of the United States. It includes information about the names, types, lengths, and locations of the water feature lines.

United States Landmarks

Geographic Names Information System Cultural and Physical Points

Buildings, Cemeteries, Churches, Golf Locales, Hospitals, Locales, Populated Places, Schools, and Summits U.S. GNIS represents an automated inventory of the proper names and locations of cultural and physical geographic features located throughout the United States. The purpose of the U.S. GNIS cultural and physical points dataset is to promote geographic feature name standardization and to serve as the federal government's repository of information regarding feature name spellings and applications for features in the United States and its commonwealths, territories, and freely associated states. The names listed in the inventory can be published on federal maps, charts, and in other documents. The feature locating information has been used in emergency preparedness, marketing, site selection and analysis, genealogical and historical research, and transportation routing applications. For this dataset, each of the cultural and physical feature types has been extracted into individual datasets to keep the number of features at a reasonable level.

Cultural and Physical Features	Points
Buildings	38,098
Cemeteries	122,025
Churches	172,360
Golf Locales	3,561
Hospitals	9,940
Locales	122,086
Populated Places	176,905
Schools	166,887
Summits	70,140

Hospitals	U.S. Hospitals represents the locations and selected attributes for hospitals included in the FY2001 edition of the Health Forum AHA Annual Survey Database. U.S. Hospitals provides locations and extensive information about hospitals such as description, type, name, address, number of beds, employees, patients, and emergency room visits.
Parks	U.S. Parks represents national, state, and local parks and forests within the United States. U.S. Parks provides thousands of named parks and forests at national, state, and local levels.
TANA/GDT Landmarks	
<i>Institutions</i>	U.S. TANA/GDT Institutions represents point locations within the United States for common institution landmark types including hospitals, educational institutions, religious institutions, government centers, and cemeteries. U.S. TANA/GDT Institutions provides the locations, names, and the state and county they reside in for hundreds of thousands of institutions.
<i>Large Area Landmarks</i>	U.S. TANA/GDT Large Area Landmarks represents common landmark areas within the United States including military areas, prisons, educational institutions, amusement centers, government centers, sport centers, golf courses, and cemeteries. U.S. TANA/GDT Large Area Landmarks provides thousands of common landmark areas that are named and makes a good cultural layer at county and local levels.
<i>Park Landmarks</i>	U.S. TANA/GDT Park Landmarks represents parks and forests within the United States at national, state, and local levels. U.S. TANA/GDT Park Landmarks provides thousands of parks and forests at national, state, and especially local levels. Each park or forest is named.
<i>Recreation Areas</i>	U.S. TANA/GDT Recreation Areas represents point locations within the United States for common recreational landmarks including golf courses, zoos, resorts, and other recreational facilities. Each recreation area is named and shows the state and county it resides in.
National Atlas of the United States	
<i>Historic Earthquakes</i>	U.S. National Atlas Historic Earthquakes represents the locations of significant and historic earthquakes in the United States and adjacent Canada and Mexico that caused deaths, property damage, and geological effects or were otherwise experienced by the resident populations. U.S. National Atlas Historic Earthquakes provides the locations of significant and historic earthquakes for geographic display and analysis at national and regional levels. This dataset is intended for a mixed audience of specialists and nonspecialists alike who have a need for general, nontechnical information about significant earthquakes in and near the United States.
<i>Volcanoes</i>	U.S. National Atlas Volcanoes represents volcanoes thought to be active in the last 10,000 years in and near the United States. The data is a subset of data available from the Global Volcanism Program, Smithsonian Institution. U.S. National Atlas Volcanoes includes information about the location, volcano number, summit elevation, type, age, and explosivity index of the volcanoes.

United States OtherNational Atlas of the
United States*Federal and Indian
Land Areas*

U.S. National Atlas Federal and Indian Land Areas represents the federal and Indian-owned land areas (e.g., Bureau of Indian Affairs and Tennessee Valley Authority) of the United States. It includes information about the name, type, agency/bureau, location, and area of the land areas.

Federal Land Lines

U.S. National Atlas Federal Land Lines represents the linear federally owned land features (e.g., national parkways and wild and scenic rivers) of the United States. It includes information about the name, type, agency/bureau, and length of the land lines.

Public Land Survey

U.S. National Atlas Public Land Survey represents the public land surveys (e.g., donation lands, land grants, and private and public surveys of public lands) of the United States. It includes information about the name, type, township and range, and area of the land survey.

State Plane Zones for
NAD 1927
and NAD 1983

U.S. State Plane Zones (NAD 1927 and NAD 1983) represent the State Plane Coordinate System Zones for the 1927 and 1983 North American Datums within the United States. U.S. State Plane Zones (NAD 1927 and NAD 1983) are generalized and are approximations of the actual State Plane Coordinate System Zone boundaries for the 1927 and 1983 North American Datums. They are intended for visual reference at small and medium map scales. Please contact state authorities with questions about a zone boundary.

USGS Topographic
Quadrangle Series
Indexes*1:24,000*

USGS 1:24,000 Topographic Quadrangle Series Indexes represents the theoretical geographic extent of USGS 1:24,000 topographic maps (7.5- by 7.5-minute quadrangles) for the conterminous 48 states and the District of Columbia. USGS 1:24,000 Topographic Quadrangle Series Indexes provides quadrangle name, identification number, publication data, and map coverage by state for each quadrangle. Rotated, over edge, and inset quadrangle boundaries are rendered as standard-shaped quadrangles.

1:100,000

USGS 1:100,000 Topographic Quadrangle Series Indexes represents the theoretical geographic extent of USGS 1:100,000 topographic maps (30- by 60-minute quadrangles) for the conterminous 48 states and the District of Columbia. USGS 1:100,000 Topographic Quadrangle Series Indexes provides quadrangle name, identification number, publication data, and map coverage by state for each quadrangle. Rotated, over edge, and inset quadrangle boundaries are rendered as standard-shaped quadrangles.

1:250,000

USGS 1:250,000 Topographic Quadrangle Series Indexes represents the theoretical geographic extent of USGS 1:250,000 topographic maps (1- by 2-degree quadrangles) for the conterminous 48 states and the District of Columbia. USGS 1:250,000 Topographic Quadrangle Series Indexes provides quadrangle name, identification number, publication data, and map coverage by state for each quadrangle. Rotated, over edge, and inset quadrangle boundaries are rendered as standard-shaped quadrangles.

United States Transportation

National Atlas of the United States

Airports U.S. National Atlas Airports represents airports in the United States, Puerto Rico, the U.S. Virgin Islands, and U.S. possessions with airport passenger enplanements of greater than or equal to 100 passengers per year. U.S. National Atlas Airports provides information about the locations, names, location identifiers, and enplanements of airports.

Highways U.S. Highways represents the major and minor highways of the United States. These include interstates, U.S. highways, state highways, major roads, and minor roads. This dataset is a subset of the StreetMap USA Streets dataset. It contains all Class 1, 2, and 3 road segments plus any other road segments necessary to provide network connectivity. U.S. Highways provides a subset of highways and roads from the very detailed Streets dataset for national, state, and local display.

Major Highways U.S. Major Highways represents the major highways of the United States. These include interstates, U.S. highways, state highways, and major roads. This dataset is a subset of the StreetMap USA Streets dataset. It contains all Class 1 and 2 road segments plus any other road segments necessary to provide network connectivity. U.S. Major Highways provides a subset of highways and major roads from the very detailed Streets dataset for national, state, and county display.

Major Roads U.S. Major Roads represents interstate, U.S. and state highways, major streets, and other major thoroughfares within the United States. It provides an invaluable reference and cartographic layer that make it easy to identify areas in other feature layers. U.S. Major Roads overlays accurately on streets and other boundary data.

National Transportation Atlas

Interstate Highways U.S. National Transportation Atlas Interstate Highways represents rural and urban interstate highways. The dataset is part of the National Highway Planning Network published by the Federal Highway Administration as part of the National Transportation Atlas Databases for the United States. It provides a comprehensive database of interstate highways from the nation's principal arterial highway system and the National Highway System. The data is generalized to allow effective use at a national level.

Railroads U.S. National Transportation Atlas Railroads represents a comprehensive database of the nation's railway system at 1:100,000 scale. The dataset covers the 48 contiguous states plus the District of Columbia. It includes information about the names, owners, types, classes, and lengths of the railroads.

TANA/GDT Landmarks

Airports U.S. TANA/GDT Airports represents airport boundaries and airport runways within the United States. All airports have a boundary and most have at least one runway. U.S. TANA/GDT Airports provides the boundaries for thousands of airports and runways. There are many attributes that describe each airport, for example, name, three- or four-character location ID (airport code), owner, elevation, congestion level, large certified air carrier enplanements, foreign enplanements, hub size, and tower type.

*Transportation
Terminals* U.S. TANA/GDT Transportation Terminals represents locations within the United States for transportation terminals such as bus terminals, train stations, marine terminals, and other significant transportation nodes. Most transportation terminals are named and each provides the type and state and county it resides in.

United States StreetMap USA Streets

Streets U.S. Streets represents detailed streets, interstate highways, and major roads within the United States. U.S. Streets is the cornerstone of StreetMap USA. U.S. Streets is in SDC 2 format, based on TIGER 2000 data enhanced by ESRI and Tele Atlas, and prepared for routing within the StreetMap Find Route dialog box. The dataset provides nationwide street map display, routing, driving directions, and geocoding for the United States. No license is required to use this data. Address attributes are prestandardized based on ESRI U.S. Streets standardization rules. The attributes include left/right and to/from addresses; prefix direction, prefix type, name, suffix type, and suffix direction with up to four alternates of these five attributes; and road and ramp classes, street elevation, highway symbol, travel speed, ZIP Code, city, and state.

United States StreetMap USA StreetMap Background

Cultural Landmarks U.S. Cultural Landmarks represents locations and proper names for airports, buildings, cemeteries, churches, civil features, hospitals, locales, military facilities, parks, post offices, populated places, reserves, schools, and other landmark type features within the United States. Data was extracted from the USGS GNIS database. This dataset provides attributes for name, class, county, state, and state and county FIPS codes.

Landmark Points U.S. Landmark Points represents locations and proper names for airports, amusement centers, apartment buildings, bus terminals, campgrounds, cemeteries, city halls, convents, monasteries, custodial facilities, educational institutions, religious institutions, employment centers, penitentiaries, fire stations, golf courses, government centers, halfway houses, hospitals, hotels, resorts, spa facilities, housing facilities, industrial buildings, islands, jails, landmarks, lookout towers, marinas, military installations, mountain peaks, national parks, national forests, nursing homes, office buildings, open spaces, orphanages, police stations, post offices, public libraries, shopping centers, state parks, local parks, towers, trailer courts, train stations, and other landmark type features

	<p>within the United States. Data was extracted from the USGS GNIS. This dataset provides attributes for name, class, CFCC, county, state, and state and county FIPS codes.</p>
Natural Landmarks	<p>U.S. Natural Landmarks represents locations for naturally occurring physical features within the United States. This dataset provides attributes for name, class, county, state, and state and county FIPS codes.</p>
Places	<p>U.S. Places represents location, configuration, name, and socioeconomic and demographic attributes of cities and places within the United States. Data was extracted from the U.S. Census 2000 TIGER/Line database. This dataset provides attributes for ID, name, place and state FIPS codes, place code, legal/statistical code, state, population class, area; current year values for males, females, and average household size; current year and five-year estimates for median age; current year, five-year estimates, and growth rates for population, per capita income, and households; average budget expenditure; and budget indices for food, housing, travel, education, and news.</p>
Hydrology	<p>U.S. Hydrology represents hydrology features within the United States. Hydrology includes the following: naturally flowing water features, man-made channels to transport water, streams, rivers, washes, braided streams and rivers, near-seawaters, linear water in a man-made excavation, and special water features. This dataset provides attributes for name, class definition, CFCC, and length.</p>
Runways	<p>U.S. Runways represents locations, identifications, and characteristics of airport runways within the United States. A wide range of air transport and physical information about runways and airports are provided including runway name, ID, length, width, and surface material. Source of this data was the U.S. Department of Transportation, 1995. This dataset provides attributes for name, county, state, state and county FIPS codes, site number, landing facility ID, city, and runway ID, length, width, and surface type.</p>
Schools	<p>U.S. Schools represents locations for schools within the United States from the National Center for Education Statistics database. This dataset provides attributes for name, type, level, enrollment, address, place, state, county, state and county FIPS codes, and ZIP Codes.</p>
USA Background	<p>U.S. USA Background represents the boundaries of the United States. It is divided by the USGS 1:100,000 Topographic Quadrangle Series indexes to increase display performance. This dataset is used for displaying a basemap background with coastlines for the United States.</p>
Water Boundaries	<p>U.S. Water Boundaries represents water feature areas within the United States. Water boundaries include the following: basic hydrography, naturally flowing water features, man-made channels to transport water, inland bodies of water, man-made bodies of water, seaward bodies of water, bodies of water in a man-made excavation, and special water features. This dataset provides attributes for name, CFCC, class definition, and area.</p>

World

Countries (Generalized)	World Countries (Generalized) represents generalized boundaries for the countries of the world as they existed in January 2005. The generalized political boundaries improve draw performance and effectiveness at a global level. The dataset includes information about the names; local names; FIPS, Global Mapping International (GMI), and ISO codes; United Nations statuses; populations; and areas of the countries. This dataset can be displayed with World Country Memberships of Political Organizations (table) or CountryWatch Demographics (table) using FIPS_CNTRY or CNTRY_NAME as the common field.
Countries 2005	World Countries 2005 represents the boundaries for the countries of the world as they existed in January 2005. The dataset includes information about the names; local names; FIPS, GMI, and ISO codes; United Nations statuses; populations; and areas of the countries. This dataset can be displayed with World Country Memberships of Political Organizations (table) or CountryWatch Demographics (table) using FIPS_CNTRY or CNTRY_NAME as the common field.
Countries 1992	World Countries 1992 represents the boundaries for the countries of the world as they existed in 1992 showing the Soviet Union, Yugoslavia, and Czechoslovakia as single nations. This dataset can be displayed with World Country Memberships of Political Organizations (table) or CountryWatch Demographics (table) using FIPS_CNTRY or CNTRY_NAME as the common field.
Administrative Units	World Administrative Units represents the boundaries for the first-level administrative units of the world. The dataset includes information about the names, country names, FIPS and GMI codes, types, populations, and areas of the administrative units.
Continents	World Continents represents the boundaries for the continents of the world. The dataset includes information about the names and areas of the continents.
Regions	World Regions represents the boundaries for the regions of the world. There are 25 commonly recognized world regions. The dataset provides an easy means of selecting a small multicountry area for display or study.
CountryWatch Demographics (table)	CountryWatch Demographics (table) represents a vast amount of demographic information for the countries recognized by the U.S. State Department. CountryWatch Demographics (table) provides information about the geography, population, social indicators, economy, key sectors of each economy, and environment of countries. To display CountryWatch Demographic attributes on a map, join this table to any vintage of World Countries using FIPS_CNTRY or CNTRY_NAME as the common field.
Country Memberships of Political Organizations (table)	World Country Memberships of Political Organizations (table) represents the memberships of countries in world political organizations such as the United Nations, the International Monetary Fund, and the Food and Agriculture Organization. The dataset includes information about the names, FIPS codes, capitals, and political organizations of the countries. This data can be displayed with any vintage of World Countries using FIPS_CNTRY or CNTRY_NAME as the common field.
Cities	World Cities represents the locations of major cities of the world. World Cities provides a basemap layer of the cities of the world that includes national capitals, provincial capitals, major population centers, and landmark cities.

Gazetteer	World Gazetteer represents the locations and proper names for map features around the world. World Gazetteer includes attribute and annotation name information from various layers of the Digital Chart of the World. World Gazetteer provides a basemap layer that may be used to find locations by their proper name anywhere around the world. The categories include airports, coastal features, drainage features, land features, ocean features, islands, political features, and populated places.
Drainage Systems	World Drainage Systems represents the major drainage systems of the world. The dataset includes information about the names, basin areas, discharge volumes, sediment loads, and lengths of the drainage systems.
Lakes	World Lakes represents the major lakes and inland seas of the world. The dataset includes information about the names, surface elevations, depths, and areas of the lakes and seas.
Rivers	World Rivers represents the major rivers of the world. The dataset includes information about the names, systems, and lengths of the rivers.
World Wildlife Fund Terrestrial Ecoregions	World Wildlife Fund Terrestrial Ecoregions represents global terrestrial ecoregions. Ecoregions are defined as relatively large areas of land or water in the world containing a characteristic set of natural communities that share a large majority of their species, dynamics, and environmental conditions. This dataset contains all terrestrial ecoregions, which include those of the Global 200. Global 200 ecoregions are a collection of the earth's most outstanding and diverse terrestrial, freshwater, and marine habitats where the earth's biological wealth is most distinctive and rich, where its loss will be most severely felt, and which must be protected to preserve the web of life. World Wildlife Fund Terrestrial Ecoregions includes information about the names, realms, biomes, future conservation statuses, priorities, and Global 200 numbers of the terrestrial ecoregions. The data is from the World Wildlife Fund Conservation Science Program published in 2005.
World Wildlife Fund Marine Ecoregions	World Wildlife Fund Marine Ecoregions represents global marine ecoregions. Ecoregions are defined as relatively large areas of land or water in the world containing a characteristic set of natural communities that share a large majority of their species, dynamics, and environmental conditions. This dataset contains the marine ecoregions of the Global 200. Global 200 ecoregions are a collection of the earth's most outstanding and diverse terrestrial, freshwater, and marine habitats where the earth's biological wealth is most distinctive and rich, where its loss will be most severely felt, and which must be protected to preserve the web of life. The data is from the World Wildlife Fund Conservation Science Program 2001.
Time Zones	World Time Zones represents the time zones of the world. The time zones are best displayed with World Countries or World Administrative Units but can be displayed with any feature dataset. World Time Zones commonly provides time zones for the countries and cities of the world. Note that daylight saving time is not shown.
UTM Zones	World UTM Zones represents the Universal Transverse Mercator zones of the world.

J-9509

Latitude and Longitude Grids World Latitude and Longitude Grids represents a five-by-five-degree latitude-longitude grid covering the world with attributes that allow it to display grids at intervals of 5, 10, 15, 20, and 30 degrees. To display a grid with a five-degree interval, simply display all the lines. To display a coarser grid (e.g., a 15-degree interval), in the Layer Properties dialog box, set the DEGREE15 attribute value equal to Y. This dataset is used as an overlay for world-level maps.

Named Latitudes and Longitudes World Named Latitudes and Longitudes represents geographically significant reference latitudes and longitudes for the world such as the equator, tropics, Arctic and Antarctic Circles, prime meridian, and International Date Line.

Map Background World Map Background represents grid cells of 30- by 30-degrees that cover the world. World Map Background provides a shaded background on which other data can be displayed. For example, quickly display the World Map Background as a blue ocean layer behind other land-based layers such as World Countries.

Europe Basemap

List of Countries	Albania	Latvia
	Andorra	Liechtenstein
	Armenia	Lithuania
	Austria	Luxembourg
	Azerbaijan	Macedonia
	Belarus	Malta
	Belgium	Moldova
	Bosnia and Herzegovina	Monaco
	Bulgaria	Netherlands
	Croatia	Norway
	Cyprus	Poland
	Czech Republic	Portugal
	Denmark	Romania
	Estonia	Russia
	Faeroe Islands	San Marino
	Finland	Serbia and Montenegro
	France	Slovakia
	Georgia	Slovenia
	Germany	Spain
	Gibraltar	Sweden
	Greece	Switzerland
	Hungary	Turkey
	Iceland	Ukraine
	Ireland	United Kingdom
	Italy	Vatican

Countries Europe Countries represents the countries of Europe including Serbia and Montenegro. This dataset provides attributes for name, country code, area, and color mapping.

Level 1 Provinces Europe Level 1 Provinces represents the first level of subnational administrative units for countries in Europe. This dataset provides attributes for name, country name, country code, area, and color mapping.

Level 2 Provinces	Europe Level 2 Provinces represents the second level of subnational administrative units for countries in Europe. This dataset provides attributes for name, country name, country code, area, and color mapping.
Level 3 Provinces	Europe Level 3 Provinces represents the third level of subnational administrative units for countries in Europe. This dataset provides attributes for name, country name, country code, area, and color mapping.
Cities	Europe Cities represents the cities of Europe including national capitals, major population centers, and landmark cities. This dataset provides attributes for name, type, level, city code, country name, country code, administrative unit name, population class, and capital indicator.
Places	Europe Places represents the populated places in Europe. This dataset provides attributes for name, type, level, populated place code, country name, country code, administrative unit name, population class, conurbation name, and capital indicator.
Urbanized Areas	Europe Urbanized Areas represents the urbanized areas of Europe. This dataset provides attributes for name, country name, country code, type, and area.
Major Roads	Europe Major Roads represents the major roads (levels 0 and 1) in Europe. This dataset provides attributes for name, length, type, level, direction, national/local code, international code, tunnel, toll, tonnage, country name, and country code.
Roads	Europe Roads represents the roads (levels 0, 1, and 2) in Europe. This dataset provides attributes for name, length, type, level, direction, national/local code, international code, tunnel, toll, tonnage, country name, and country code.
Railroads	Europe Railroads represents the railroads in Europe. This dataset provides attributes for name, length, type, level, tunnel, floor, tonnage, country name, and country code.
Railroad Stations	Europe Railroad Stations represents the railroad stations in Europe as part of the railroad system for Europe. This dataset provides attributes for name, type, level, country name, country code, administrative unit name, and conurbation name.
Major Water	Europe Major Water represents the major inland water for Europe. This dataset is used in conjunction with Europe Water to display all water for Europe. This dataset provides attributes for name, type, rank, area, country name, and country code.
Water	Europe Water represents inland water for Europe not contained in Europe Major Water. This dataset is used in conjunction with Europe Major Water to display all water for Europe. This dataset provides attributes for name, rank, area, country name, and country code.
Ferries	Europe Ferries represents the ferry routes in Europe as part of the transportation system for Europe. This dataset provides attributes for name, length, level, direction, passenger-only, national/local code, international code, time, country name, and country code.

Europe Demography

NUTS 0 Demographics	Europe NUTS 0 Demographics represents areas of aggregated socioeconomic and demographic information at the NUTS 0 (country) level for Europe. This dataset provides attributes for name, NUTS code, population size, population by sex, population by age groups, households, average number of persons per household, population density, stock of dwellings, purchasing power, gross domestic product, and area.
NUTS 1 Demographics	Europe NUTS 1 Demographics represents areas of aggregated socioeconomic and demographic information at the NUTS 1 level for Europe. NUTS 1 units have a population between three million and seven million people. This dataset provides attributes for name, NUTS codes (0 and 1), population size, population by sex, population by age groups, households, average number of persons per household, population density, stock of dwellings, purchasing power, gross domestic product, and area.
NUTS 2 Demographics	Europe NUTS 2 Demographics represents areas of aggregated socioeconomic and demographic information at the NUTS 2 level for Europe. NUTS 2 units have a population between 800,000 and 3,000,000 people. This dataset provides attributes for name, NUTS codes (0 and 2), population size, population by sex, population by age groups, households, average number of persons per household, population density, stock of dwellings, purchasing power, gross domestic product, and area.
NUTS 3 Demographics	Europe NUTS 3 Demographics represents areas of aggregated socioeconomic and demographic information at the NUTS 3 level for Europe. NUTS 3 units have a population between 150,000 and 800,000 people. This dataset provides attributes for name, NUTS codes (0 and 3), population size, population by sex, population by age groups, households, average number of persons per household, population density, stock of dwellings, purchasing power, gross domestic product, and area.

Europe (Germany)

Germany ZIP Code Areas (PLZgrenzen)

One-Digit ZIP Code Zones

There are no official ZIP Code areas in Germany. ZIP Codes (Postleitzahl, PLZ) are related only to streets, but the first digit of the ZIP Codes defines 10 zones that cover Germany represented by Germany One-Digit ZIP Code Zones (PLZgrenzen). This dataset provides an attribute for zone code.

Two-Digit ZIP Code Regions

There are no official ZIP Code areas in Germany. ZIP Codes (Postleitzahl, PLZ) are related only to streets, but the first two digits of the ZIP Codes define 95 regions that cover Germany represented by Germany Two-Digit ZIP Code Regions (PLZgrenzen). This dataset provides attributes for region and zone codes.

Five-Digit ZIP Code Areas

There are no official ZIP Code areas in Germany. ZIP Codes (Postleitzahl, PLZ) are related only to streets but are organized into the five-digit ZIP Code areas that cover Germany represented by Germany Five-Digit ZIP Code Areas (PLZgrenzen). This dataset provides attributes for area and region codes and poststation name.

Canada

Provinces	Canada Provinces represents the Canadian provinces and territories as well as coastlines, international boundaries, provincial boundaries, and demographics. The boundaries are digitized from CanMap®. This dataset provides attributes for name, area, FIPS code, population, and dwelling counts.
Major Cities	Canada Major Cities represents locations of the largest cities within Canada. The major cities are based on the Canadian Geographic Names Database from Natural Resources Canada. This dataset provides attributes for name, province abbreviation, capital indicator, municipality name, municipality code, municipality population, and population rank.
Middle Cities	Canada Middle Cities represents locations of towns within Canada. The middle cities are based on the Canadian Geographic Names Database from Natural Resources Canada. This dataset provides attributes for name, province abbreviation, municipality name, municipality code, and municipality population.
Municipalities	Canada Municipalities represents the municipalities within Canada of types including cities, cantons, hamlets, towns/villes, villages, Indian reserves, parishes/paroisses, communities, unorganized, districts, and terre Inuite. The boundaries are digitized from CanMap. This dataset provides attributes for name, province abbreviation, type, area, population, and dwelling counts.
Regional Municipalities	Canada Regional Municipalities represents the regional municipalities within Canada including regional districts and municipalities, counties, communauté, regions, divisions, and districts. The boundaries are digitized from CanMap. This dataset provides attributes for name, province abbreviation, area, population, dwelling counts, and color mapping.
Indian Reserves	Canada Indian Reserves represents the Indian reserves within Canada. The Indian reserves are based on the National Atlas Information Service (NAIS) 1:2 million digital maps created by Natural Resources Canada for publishing of the National Atlas of Canada. This dataset provides attributes for name, type, and area.
Highways	Canada Highways represents the expressways and primary highways of Canada. The highways are from the NAIS 1:2 million digital maps created by Natural Resources Canada for publishing of the National Atlas of Canada. This dataset provides attributes for name, type, route number, and distance in kilometers.
Railways	Canada Railways represents the railroads within Canada. The railways are based on the NAIS 1:7.5 million digital maps created by Natural Resources Canada for publishing of the National Atlas of Canada. This dataset provides attributes for unique ID and distance in kilometers.
FSA Postal Centroids	Canada FSA Postal Centroids represents the Forward Sortation Areas of Canada as centroids, which are identified by the first three characters of the postal code. The sequence of the three-character FSA is always alphabetical character/number/alphabetical character. The centroids are calculated from the DMTI Spatial FSA boundary dataset, which is created from the DMTI Spatial six-character postal code point dataset and CanMap. The FSA boundaries encompass the six-character postal code points starting

	with the FSA designation and conform to the streets and other physical features within CanMap. This dataset provides attributes for FSA code and province.
Telephone Area Code Boundaries	Canada Telephone Area Code Boundaries represents the telephone area codes for Canada. The area code boundaries are based on CanMap municipalities and are useful for call center applications. This dataset provides attributes for province, area code, area, and color mapping.
National Parks	Canada National Parks represents the national parks and national park reserves within Canada. The national parks are based on the NAIS 1:7.5 million digital maps created by Natural Resources Canada for publishing of the National Atlas of Canada. This dataset provides attributes for name, type, and area.
Provincial Parks	Canada Provincial Parks represents the provincial parks (historical, provincial, and wilderness) within Canada. The provincial parks are based on the NAIS 1:2 million digital maps created by Natural Resources Canada for publishing of the National Atlas of Canada. This dataset provides attributes for name, type, and area.
Water Bodies	Canada Water Bodies represents the major freshwater bodies within Canada including lakes/lacs, large rivers/fleuves, reservoirs, and bays/baies. The boundaries are based on Statistics Canada data. This dataset provides attributes for name and area.
<i>Mexico</i>	
States	Mexico States represents the states of Mexico with coastlines, international boundaries, and state boundaries. This dataset provides attributes for name, FIPS code, area in square kilometers, and color mapping.
Municipalities	Mexico Municipalities represents the municipios of Mexico with coastlines, international boundaries, state boundaries, and municipio boundaries. This dataset provides attributes for name, state, unique ID, municipality ID, area, and color mapping.
Cities	Mexico Cities represents the locations of cities in Mexico. This dataset provides attributes for name, alternate name, state, and population.
Urban Areas	Mexico Urban Areas represents the locations of major urban areas in Mexico. This dataset provides attributes for name, population, and area.
Roads	Mexico Roads represents the major roads and highways of Mexico. This dataset is used to display roads by their type, administrative class, toll information, and length.
Railroads	Mexico Railroads represents the major railroads of Mexico. This dataset provides attributes for type and length.
Rivers and Streams	Mexico Rivers and Streams represents the major rivers and streams in Mexico. This dataset provides attributes for name, type, status, rank, and length.
Water Bodies	Mexico Water Bodies represents the major lakes, reservoirs, and lagoons in Mexico. This dataset provides attributes for name, type, status, rank, and area.
Contours	Mexico Contours represents the 1,000-meter contour lines in Mexico. The contour values are in meters above sea level.

Image Data—World Elevation

Global Digital Elevation Model (ETOPO2) Global Digital Elevation Model (ETOPO2) represents gridded (2 by 2 minute) elevation and bathymetry data for the world. This dataset was derived from the NGDC ETOPO2 Global 2-minute Elevations dataset from September 2001. The VALUE attribute represents the elevation in meters.

Global Digital Elevation Model (GTOPO30) Global Digital Elevation Model (GTOPO30) represents gridded 30-arc second (approximately one kilometer) elevation for the world. The source datasets were developed by the U.S. Geological Survey's EROS Data Center in 1996 from a variety of data sources. The VALUE attribute represents the elevation in meters.

World Shaded Relief World Shaded Relief represents a shaded relief map of the world derived from the GTOPO30 global digital elevation model (DEM) datasets from the U.S. Geological Survey's EROS Data Center Distributed Active Archive Center (EDC DAAC). The data has been resampled.

World Topography and Bathymetry World Topography and Bathymetry represents a color hillshaded DEM-based image of all continents and ocean beds of the world. The hillshading effect (illumination from azimuth of 315 degrees, or northwest) provides the appearance of three dimensions (also known as 2.5D).

Image Data—World Images

World Cloud Free World Cloud Free represents a true-color, cloud-free view of the earth produced by mosaicking hundreds of individual 2001 NASA Moderate Resolution Imaging Spectroradiometer (MODIS) satellite images. These satellites orbit the earth at an altitude of 700 km (435 miles). The image has a cell size of one square kilometer (0.386 sq. mi.) at the equator. The image was enhanced with shaded relief imagery derived from the USGS GTOPO30 global DEM data. ESRI georeferenced this dataset to a real-world coordinate system.

World at Night World at Night represents a nighttime view of the earth produced by mosaicking Defense Meteorological Satellite Program Operational Linescan System satellite images. This system was originally designed to view clouds by moonlight and to map the locations of permanent lights on the earth's surface. These images were derived from nine months of observations superimposed on a darkened land surface. ESRI georeferenced this dataset to a real-world coordinate system.

World With Clouds World With Clouds represents a true-color view of the earth with cloud cover produced by mosaicking hundreds of individual 2001 NASA MODIS satellite images. These satellites orbit the earth at an altitude of 700 km (435 miles). The image has a cell size of one square kilometer (0.386 sq. mi.) at the equator. The image was enhanced with shaded relief imagery, derived from the USGS GTOPO30 global DEM data. The cloud image is a composite of two days of imagery collected in visible light wavelengths and a third day of thermal infrared imagery over the poles. ESRI georeferenced this dataset to a real-world coordinate system.

World With Ice	World With Ice represents a true-color, cloud-free view of the earth specially processed to depict areas of the earth covered with ice. Mosaicking hundreds of individual 2001 NASA MODIS satellite images created this image. For polar sea ice areas MODIS observations were combined with observations of Antarctica made by the National Oceanic and Atmospheric Administration's (NOAA) Advanced Very High Resolution Radiometer. The MODIS satellites orbit the earth at an altitude of 700 km (435 miles). The image has a cell size of one square kilometer (0.386 sq. mi.) at the equator. The image was enhanced with shaded relief imagery, derived from the USGS GTOPO30 global DEM data. ESRI georeferenced this dataset to a real-world coordinate system.
World WorldSat Color Shaded Relief	World WorldSat Color Shaded Relief represents a cloud-free view of the earth produced by mosaicking hundreds of individual 1996 NOAA weather satellite images. These satellites orbit the earth at an altitude of 800 km (497 miles). The image has a cell size of four square kilometers (1,544 sq. mi.) at the equator. On completion of the base satellite mosaic, the land areas were enhanced with shaded relief imagery, derived from 1,000-meter digital elevation data, bringing the earth's topography to life. For the Ocean areas, WorldSat incorporated ocean floor relief data (bathymetry), providing a view of the undersea topography.
<i>Image Data—North America</i>	
North America Digital Elevation Model	North America Digital Elevation Model represents an elevation map for North America derived from the GTOPO30 global DEM datasets from the U.S. Geological Survey's EDC DAAC. The VALUE attribute represents the elevation in meters.
North America Shaded Relief	North America Shaded Relief represents a shaded relief map for North America derived from the GTOPO30 global DEM datasets from the U.S. Geological Survey's EDC DAAC.
<i>Image Data—Samples</i>	
Brasilia, Brasil (61 cm)—DigitalGlobe QuickBird	Brasilia, Brasil (61 cm)—DigitalGlobe QuickBird represents a 61-cm (2 ft.) resolution sample image of Brasilia, Brasil.
Brasilia, Brasil (2.8 m)—DigitalGlobe QuickBird	Brasilia, Brasil (2.8 m)—DigitalGlobe QuickBird represents a natural-color, multispectral sample image of Brasilia, Brasil, collected by QuickBird on May 3, 2002. In this overview, the bird-shaped layout of the city is revealed at the appropriate viewing distance.
Denver, CO, USA (61 cm)—DigitalGlobe QuickBird	Denver, CO, USA (61 cm)—DigitalGlobe QuickBird represents a 61-cm (2 ft.) resolution sample image of Denver, Colorado, USA.

Giza, Egypt (61 cm)— DigitalGlobe QuickBird	Giza, Egypt (61 cm)—DigitalGlobe QuickBird represents a 61-cm (2 ft.) resolution sample image of the Great Pyramids of Giza, Egypt.
Lake Louise, Canada (61 cm)— DigitalGlobe QuickBird	Lake Louise, Canada (61 cm)—DigitalGlobe QuickBird represents a 61-cm (2 ft.) resolution sample image of Lake Louise, Canada, in Banff National Park.
Lake Louise, Canada (2.8 m)— DigitalGlobe QuickBird	Lake Louise, Canada (2.8 m)—DigitalGlobe QuickBird represents a multispectral sample image of the area near Lake Louise, Canada, in Banff National Park.
Las Vegas, NV, USA (61 cm)— DigitalGlobe QuickBird	Las Vegas, NV, USA (61 cm)—DigitalGlobe QuickBird represents a 61-cm (2 ft.) resolution sample image of Las Vegas, Nevada, USA.
Las Vegas, NV, USA (15 m)—DigitalGlobe Millennium Mosaic	Las Vegas, NV, USA (15 m)—DigitalGlobe Millennium Mosaic represents a Landsat 15-meter (49 ft.) resolution sample image of Las Vegas, Nevada, USA, and surrounding area.
Las Vegas, NV, USA (6 inch)— AirPhotoUSA	Las Vegas, NV, USA (6 inch)—AirPhotoUSA represents a 6-inch (15 cm) resolution sample image of the Las Vegas Strip in Las Vegas, Nevada, USA. The image represents true-color, high-resolution, and seamless digital orthorectified aerial photography.
Miami, FL, USA (61 cm)— DigitalGlobe QuickBird	Miami, FL, USA (61 cm)—DigitalGlobe QuickBird represents a 61-cm (2 ft.) resolution sample image of Miami, Florida, USA.
Prague, Czech Republic (61 cm)— DigitalGlobe QuickBird	Prague, Czech Republic (61 cm)—DigitalGlobe QuickBird represents a 61-cm (2 ft.) resolution sample image of Prague, Czech Republic.
Sydney, Australia (61 cm)— DigitalGlobe QuickBird	Sydney, Australia (61 cm)—DigitalGlobe QuickBird represents a 61-cm (2 ft.) resolution sample image of the city and harbor of Sydney, Australia, including the Sydney Opera House.

Tokyo, Japan
(61 cm)—
DigitalGlobe
QuickBird

Tokyo, Japan (61 cm)—DigitalGlobe QuickBird represents a 61-cm (2 ft.) resolution sample image of Tokyo, Japan.

Image Data—Global Imagery

Africa (150 m)—
EarthSat NaturalVue
Global Landsat
Mosaic

Africa (150 m)—EarthSat NaturalVue Global Landsat Mosaic represents a 150-meter (492 ft.) resolution, natural-color, Landsat 7-derived, mosaicked image dataset covering the entire land area of Africa. NaturalVue Global Landsat Mosaic was created from NaturalVue 2000®. NaturalVue 2000 was derived from the GeoCover® Ortho 2000 program for NASA.

Asia-East (150 m)—
EarthSat NaturalVue
Global Landsat
Mosaic

Asia-East (150 m)—EarthSat NaturalVue Global Landsat Mosaic represents a 150-meter (492 ft.) resolution, natural-color, Landsat 7-derived, mosaicked image dataset covering the entire land area of eastern Asia except for the high-latitude polar regions. NaturalVue Global Landsat Mosaic was created from NaturalVue 2000. NaturalVue 2000 was derived from the GeoCover Ortho 2000 program for NASA.

Asia-West (150 m)—
EarthSat NaturalVue
Global Landsat
Mosaic

Asia-West (150 m)—EarthSat NaturalVue Global Landsat Mosaic represents a 150-meter (492 ft.) resolution, natural-color, Landsat 7-derived, mosaicked image dataset covering the entire land area of western Asia except for the high-latitude polar regions. NaturalVue Global Landsat Mosaic was created from NaturalVue 2000. NaturalVue 2000 was derived from the GeoCover Ortho 2000 program for NASA.

Australia (150 m)—
EarthSat NaturalVue
Global Landsat
Mosaic

Australia (150 m)—EarthSat NaturalVue Global Landsat Mosaic represents a 150-meter (492 ft.) resolution, natural-color, Landsat 7-derived, mosaicked image dataset covering the entire land area of Australia. NaturalVue Global Landsat Mosaic was created from NaturalVue 2000. NaturalVue 2000 was derived from the GeoCover Ortho 2000 program for NASA.

Europe (150 m)—
EarthSat NaturalVue
Global Landsat
Mosaic

Europe (150 m)—EarthSat NaturalVue Global Landsat Mosaic represents a 150-meter (492 ft.) resolution, natural-color, Landsat 7-derived, mosaicked image dataset covering the entire land area of Europe except for the high-latitude polar regions. NaturalVue Global Landsat Mosaic was created from NaturalVue 2000. NaturalVue 2000 was derived from the GeoCover Ortho 2000 program for NASA.

North America-North
(150 m)—EarthSat
NaturalVue Global
Landsat Mosaic

North America-North (150 m)—EarthSat NaturalVue Global Landsat Mosaic represents a 150-meter (492 ft.) resolution, natural-color, Landsat 7-derived, mosaicked image dataset covering the entire land area of northern North America except for the high-latitude polar regions. NaturalVue Global Landsat Mosaic was created from NaturalVue 2000. NaturalVue 2000 was derived from the GeoCover Ortho 2000 program for NASA.

North America-South
(150 m)—EarthSat
NaturalVue Global
Landsat Mosaic

North America-South (150 m)—EarthSat NaturalVue Global Landsat Mosaic represents a 150-meter (492 ft.) resolution, natural-color, Landsat 7-derived, mosaicked image dataset covering the entire land area of southern North America. NaturalVue Global Landsat Mosaic was created from NaturalVue 2000. NaturalVue 2000 was derived from the GeoCover Ortho 2000 program for NASA.

**South America
(150 m)—EarthSat
NaturalVue Global
Landsat Mosaic**

South America (150 m)—EarthSat NaturalVue Global Landsat Mosaic represents a 150-meter (492 ft.) resolution, natural-color, Landsat 7-derived, mosaicked image dataset covering the entire land area of South America except for the high-latitude polar regions. NaturalVue Global Landsat Mosaic was created from NaturalVue 2000. NaturalVue 2000 was derived from the GeoCover Ortho 2000 program for NASA.



For more than 35 years ESRI has been helping people manage and analyze geographic information. ESRI offers a framework for implementing GIS technology in any organization with a seamless link from personal GIS on the desktop to enterprise-wide GIS client/server and data management systems. ESRI GIS solutions are flexible and can be customized to meet the needs of our users. ESRI is a full-service GIS company, ready to help you begin, grow, and build success with GIS.

Corporate

ESRI
380 New York Street
Redlands, California
92373-8100, USA
Telephone: 909-793-2853
Fax: 909-793-5953

For more information
on ESRI, call

1-800-447-9778

(1-800-GIS-XPRT)

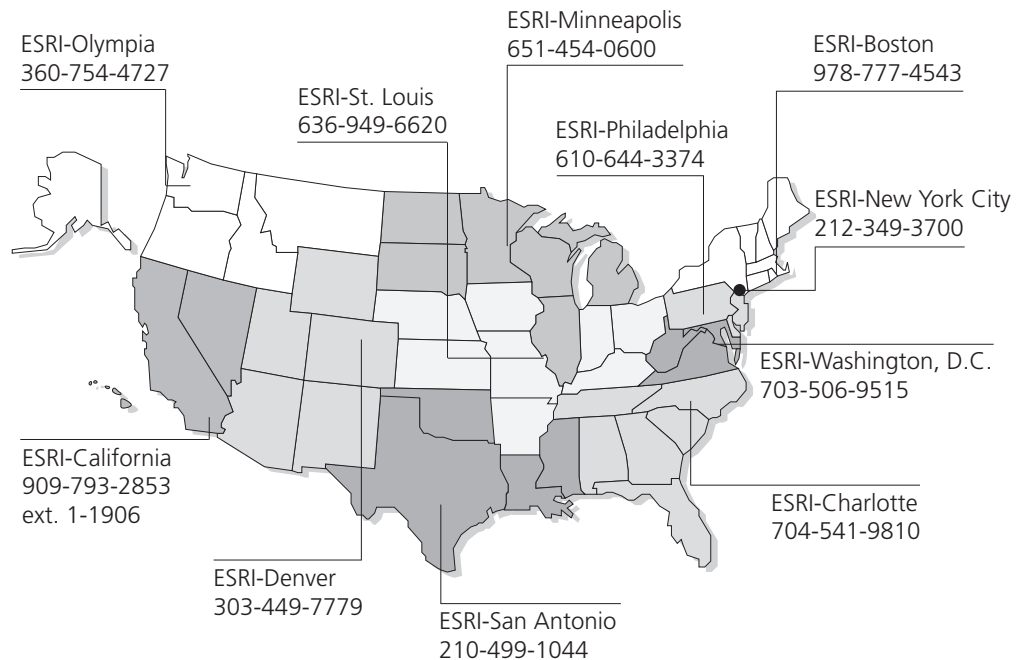
or contact an ESRI value-added
reseller near you.

Send e-mail inquiries to
info@esri.com

Visit ESRI's Web page at
www.esri.com

Outside the United States,
contact your local ESRI distributor.
For the number of your distributor,
call ESRI at 909-793-2853,
ext. 1-1235,
or visit our Web site at
www.esri.com/international

Regional Offices



International Offices

Australia
www.esriaustralia.com.au

Finland
www.esri-finland.com

Italy
www.esriitalia.it

Romania
www.esriro.ro

Belgium/Luxembourg
www.esribelux.com

France
www.esrifrance.fr

Japan
www.esrij.com

Singapore
www.esrisa.com

Bulgaria
www.esribulgaria.com

Germany/Switzerland
www.esri-germany.de
www.esri-suisse.ch

Korea
www.esrikr.co.kr

Spain
www.esri-es.com

Canada
www.esricanada.com

Hungary
www.esrihu.hu

Netherlands
www.esrinl.com

Sweden
www.esri-sweden.com

China (Beijing)
www.esrichina-bj.cn

India
www.esriindia.com

Poland
www.esripolska.com.pl

Thailand
www.esrith.com

China (Hong Kong)
www.esrichina-hk.com

Indonesia/Malaysia
62-21-527-1023
603-7874-9930

Portugal
www.esri-portugal.pt

United Kingdom
www.esriuk.com

Venezuela
www.esriven.com



Place ESRI business partner or distributor address here.



No. GS-35F-5086H