



## ArcGIS Military Analyst

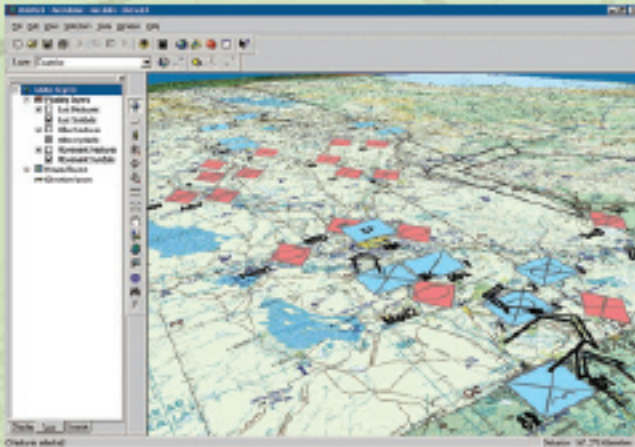
### Features of ArcGIS Military Analyst

With ArcGIS® Military Analyst, you can easily use standard National Geospatial-Intelligence Agency (NGA) data and generate MIL-STD 2525B symbology.

The ESRI® ArcGIS Military Analyst extension incorporates a suite of tools that is tailored to meet the special needs of the defense user and significantly enhances the effectiveness of core ArcGIS for the military planner and intelligence analyst. ArcGIS Military Analyst maximizes the use of the standard suite of NGA data products by directly reading and rendering NGA's vector and raster products, line-of-sight (LOS) assessments, Military Grid Reference System (MGRS) conversion, and Digital Terrain Elevation Data (DTED) analysis. ArcGIS Military Analyst also includes the Military Overlay Editor (MOLE™), which supports MIL-STD 2525B and custom war-fighting symbologies.

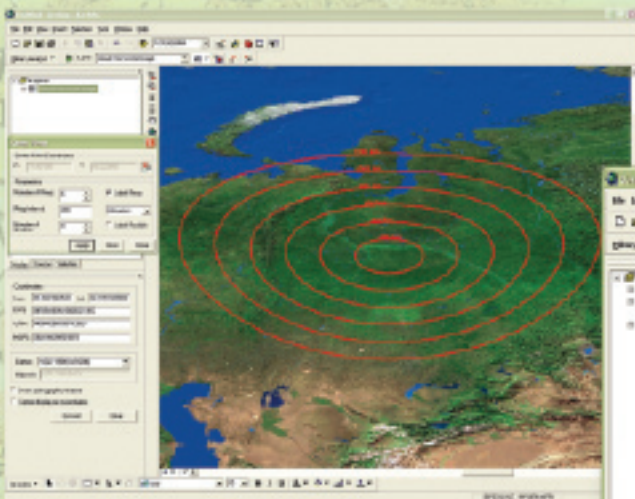
ArcGIS Military Analyst offers full customization using COM interfaces, on-the-fly projection of raster and vector data, and a suite of tools that includes

- Data management tools—Manage the display of Raster Product Format (RPF), Vector Product Format (VPF), and DTED data through the use of catalogs; load bulk RPF and DTED data into ArcSDE®.
- A coordinate tool—Supports MGRS and coordinate conversion.
- Terrain analysis tools—Mosaic/Extract RPF and DTED files from catalogs; perform linear and radial visibility analysis across DTED tiles; view data in 3D and create threat domes.
- Geodesy tools—Calculate and display geodesic, great circle, projected ellipses, and rhumb line distances.
- Conversion tools—Batch coordinate conversion of coordinates in files; convert VPF features to shapefiles and geodatabase feature classes.
- Range ring tool—Create a series of spatially accurate and projected ellipses for weapons system and aircraft ranges.

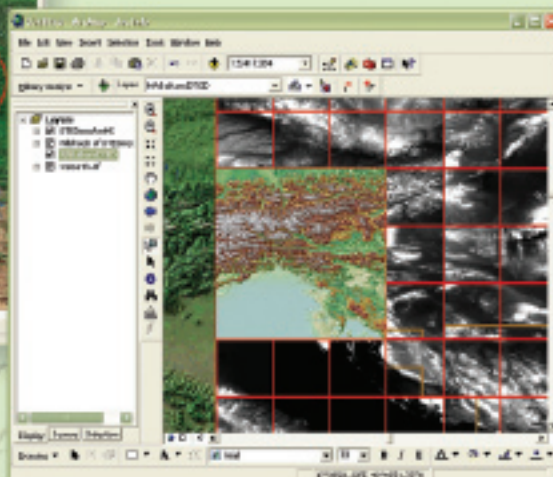


*MIL-STD 2525B Symbology displayed in ArcGlobe*

# ArcGIS® Military Analyst



*Projected ellipses created using the Military Analyst range ring tool*



*Military Analyst DTED Catalog*



For more than 30 years ESRI has been helping people manage and analyze geographic information. ESRI offers a framework for implementing GIS technology in any organization with a seamless link from personal GIS on the desktop to enterprisewide GIS client/server and data management systems. ESRI GIS solutions are flexible and can be customized to meet the needs of our users. ESRI is a full-service GIS company, ready to help you begin, grow, and build success with GIS.

## Corporate

ESRI  
380 New York Street  
Redlands, California  
92373-8100, USA  
Telephone: 909-793-2853  
Fax: 909-793-5953

For more information  
on ESRI, call

**1-800-447-9778**

(1-800-GIS-XPRT)

or contact an ESRI value-added  
reseller near you.

Send e-mail inquiries to

**info@esri.com**

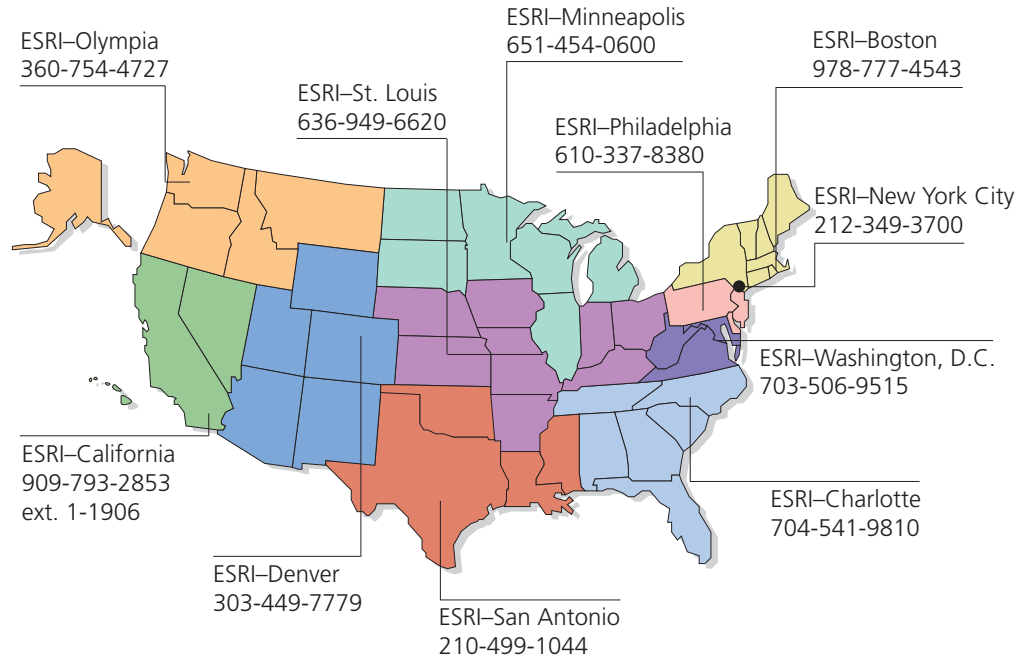
Visit ESRI's Web page at

**www.esri.com**

Outside the United States,  
contact your local ESRI distributor.  
For the number of your distributor,  
call ESRI at 909-793-2853,  
ext. 1235,  
or visit our Web site at  
**www.esri.com/international**

Place ESRI business partner or distributor address here.

## Regional Offices



## International Offices

Australia  
www.esriaustralia.com.au

Finland  
www.esri-finland.com

Italy  
www.esriitalia.it

Romania  
www.esriro.com

Belgium/Luxembourg  
www.esribelux.com

France  
www.esrifrance.fr

Japan  
www.esrij.com

Singapore  
www.esrisa.com

Bulgaria  
www.esribulgaria.com

Germany/Switzerland  
www.esri-germany.de  
www.esri-suisse.ch

Korea  
www.esrikr.co.kr

Spain  
www.esri-es.com

Canada  
www.esricanada.com

Hungary  
www.esrihu.hu

Netherlands  
www.esrinl.com

Sweden  
www.esri-sweden.com

China (Beijing)  
www.esrichina-bj.cn

India  
www.esriindia.com

Poland  
www.esripolska.com.pl

Thailand  
www.esrith.com

China (Hong Kong)  
www.esrichina-hk.com

Indonesia/Malaysia  
62-21-527-1023  
603-7874-9930

Portugal  
www.esri-portugal.pt

United Kingdom  
www.esriuk.com

Venezuela  
www.esriven.com

Copyright © 2004 ESRI. All rights reserved. ESRI, the ESRI globe logo, ArcGIS, ArcMap, ArcGlobe, ArcInfo, ArcSDE, MOLE, @esri.com, and www.esri.com are trademarks, registered trademarks, or service marks of ESRI in the United States, the European Community, or certain other jurisdictions. Other companies and products mentioned herein are trademarks or registered trademarks of their respective trademark owners.

