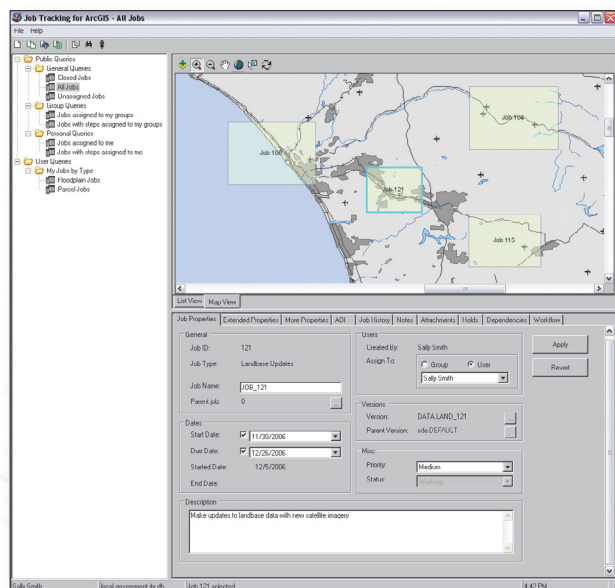


# Job Tracking for ArcGIS® (JTX™)

Enterprise GIS Workflow Management and Job Tracking



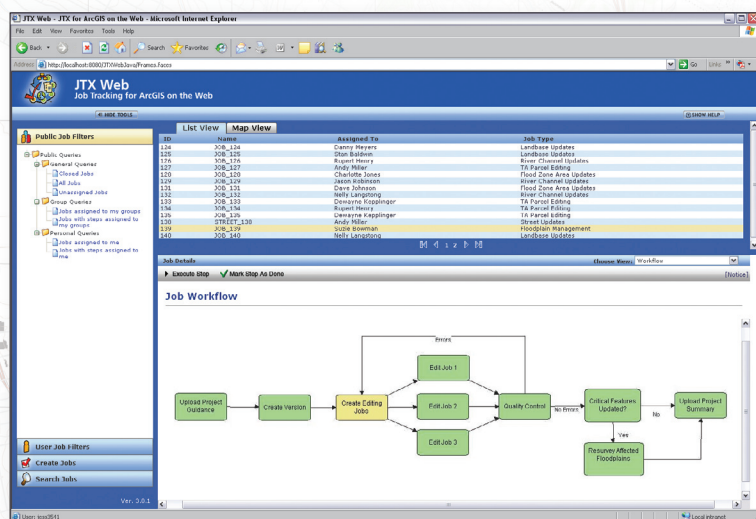
Efficiently allocate staffing resources and track the status and progress of work schedules.

## Better Manage Your GIS Tasks and Resources with One Tool

Organize, standardize, and streamline your personal, departmental, and organizational workflows with Job Tracking for ArcGIS® (JTX™). Available for the desktop and server, Job Tracking for ArcGIS (JTX) is enterprise workflow management software that simplifies many aspects of geographic information system (GIS) and non-GIS job management and tracking, saving you time and allowing you and your organization to more efficiently utilize resources.

With Job Tracking for ArcGIS (JTX) you can improve productivity and efficiency with tools that allow you to

- Allocate staffing resources and track job status and work schedules.
- Distribute work geographically to help manage a dispersed workforce, a project team across organizations, or contractors around the world.
- Centralize all job-related information to maintain consistency across your organization or business unit.
- Reduce repetitive setup tasks and automate key processes.
- Simplify geodatabase version creation, management, and access for more efficient and accurate multiuser editing.
- Configure and customize Job Tracking for ArcGIS (JTX) to fit your unique business needs.
- Access the capabilities of Job Tracking for ArcGIS (JTX) through an easy-to-use Web application on the desktop or in the field (server only).



Access information about your jobs through an easy-to-use Web application on the desktop, or in the field.

For more information, visit  
[www.esri.com/jtx](http://www.esri.com/jtx) or e-mail [jtx@esri.com](mailto:jtx@esri.com)

To read case studies, visit  
[www.esri.com/jtx-casestudies](http://www.esri.com/jtx-casestudies)

To request an evaluation, send an e-mail to  
[jtx@esri.com](mailto:jtx@esri.com)

**Arc**  
ESRI **GIS**





## ESRI

380 New York Street  
Redlands, California  
92373-8100 USA

Phone: 909-793-2853  
Fax: 909-793-5953  
E-mail: [info@esri.com](mailto:info@esri.com)

*For more than 35 years, ESRI has been helping people make better decisions through management and analysis of geographic information. A full-service GIS company, ESRI offers a framework for implementing GIS technology and business logic in any organization from personal GIS on the desktop to enterprise-wide GIS servers (including the Web) and mobile devices. ESRI GIS solutions are flexible and can be customized to meet the needs of our users.*

## For More Information

**1-800-GIS-XPRT** (1-800-447-9778)

[www.esri.com](http://www.esri.com)

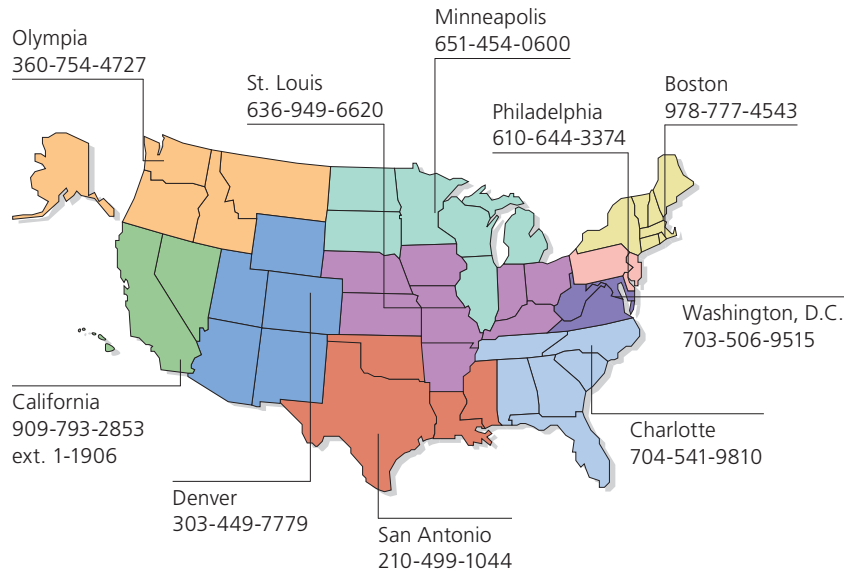
Locate an ESRI value-added reseller near you at

[www.esri.com/resellers](http://www.esri.com/resellers)

Outside the United States, contact your local ESRI distributor. For the number of your distributor, call ESRI at 909-793-2853, ext. 1-1235, or visit our Web site at

[www.esri.com/distributors](http://www.esri.com/distributors)

## ESRI Regional Offices



## ESRI International Offices

Australia  
[www.esriaustralia.com.au](http://www.esriaustralia.com.au)

Belgium/Luxembourg  
[www.esribelux.com](http://www.esribelux.com)

Bulgaria  
[www.esribulgaria.com](http://www.esribulgaria.com)

Canada  
[www.esricanada.com](http://www.esricanada.com)

Chile  
[www.esri-chile.com](http://www.esri-chile.com)

China (Beijing)  
[www.esrichina-bj.cn](http://www.esrichina-bj.cn)

China (Hong Kong)  
[www.esrichina-hk.com](http://www.esrichina-hk.com)

Finland  
[www.esri-finland.com](http://www.esri-finland.com)

France  
[www.esrifrance.fr](http://www.esrifrance.fr)

Germany/Switzerland  
[www.esri-germany.de](http://www.esri-germany.de)  
[www.esri-suisse.ch](http://www.esri-suisse.ch)

Hungary  
[www.esrihu.hu](http://www.esrihu.hu)

India  
[www.esriindia.com](http://www.esriindia.com)

Indonesia  
[www.esrisa.com.my](http://www.esrisa.com.my)

Italy  
[www.esriitalia.it](http://www.esriitalia.it)

Japan  
[www.esrij.com](http://www.esrij.com)

Korea  
[www.esrikr.co.kr](http://www.esrikr.co.kr)

Malaysia  
[www.esrisa.com.my](http://www.esrisa.com.my)

Netherlands  
[www.esrinl.com](http://www.esrinl.com)

Northeast Africa  
202-516-7485

Poland  
[www.esripolska.com.pl](http://www.esripolska.com.pl)

Portugal  
[www.esri-portugal.pt](http://www.esri-portugal.pt)

Romania  
[www.esriro.ro](http://www.esriro.ro)

Singapore  
[www.esrisa.com](http://www.esrisa.com)

Spain  
[www.esri-es.com](http://www.esri-es.com)

Sweden  
[www.esri-sweden.com](http://www.esri-sweden.com)

Thailand  
[www.esrith.com](http://www.esrith.com)

United Kingdom  
[www.esriuk.com](http://www.esriuk.com)

Venezuela  
[www.esriven.com](http://www.esriven.com)