

ArcGIS™ Tracking Analyst

Temporal Data Visualization and Analysis



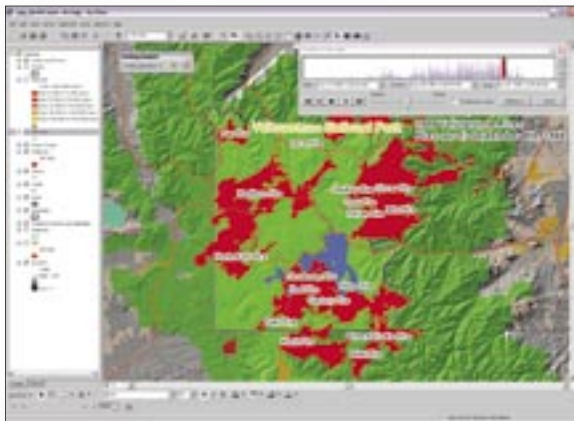
ArcGIS™ Tracking Analyst

Temporal Data Visualization and Analysis

The ESRI® ArcGIS™ Tracking Analyst extension enables you to visualize and analyze temporal data by defining events including time, location, and attribute information.

With ArcGIS Tracking Analyst you can explore, visualize, and analyze information relative to time, location, and change. ArcGIS Tracking Analyst provides capabilities for the sophisticated visualization and analysis of time-related data by defining temporal events that consist of the following information:

- Time: The date and time of the event
- Position: The geographic location of the event
- Attributes: Object-specific characteristics and properties



The Playback Manager permits rendering of historical data sets. Playback controls allow the user to rewind, stop, fast-forward, and play data in real time.



The Playback Manager's Continuous Loop setting recycles the playback to repeat data display. The Animation tool can save playback as an AVI video file or individual frames.

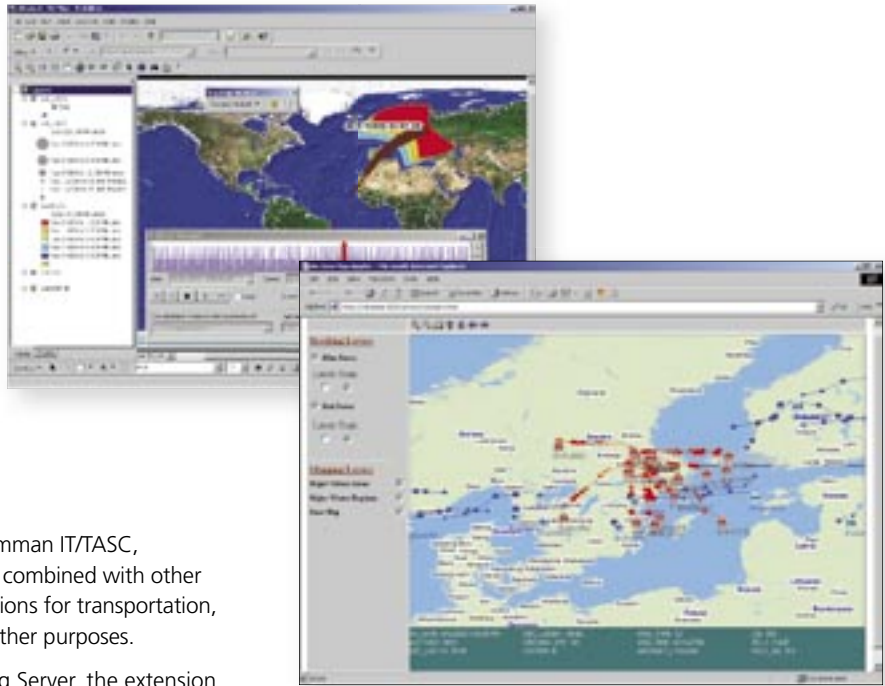
ArcGIS Tracking Analyst can display data types, including points, lines, polygons, and tracks, for historical or real-time data analysis (from connections to the ArcIMS® Tracking Server*). Users can record, play back, and conduct temporal analysis including data clock charting and temporal offset. Monitoring and analysis actions are available such as highlight, suppress, filter, and user-defined Visual Basic® (VB) scripts. Existing temporal data can be set with future time windows (for mission planning) or past time windows (for historical data).

The ArcGIS Tracking Analyst extension extends the range of functionality first released in the ArcView® 3.x Tracking Analyst extension. This new ArcGIS extension is compatible with existing ArcView Tracking Analyst data sets.

With ArcGIS Tracking Analyst You Can

- Display common data types temporally, including points, lines, polygons, and tracks, for historical or real-time data (from connections to the ArcIMS Tracking Server*).
- Apply layer-specific time windows to manage multiple temporal layers.
- Symbolize time by color, size, or shape to show the aging of data.
- Interactively play back time-related data.
- Apply actions to individual temporal layers based on attributes, location, or a combination of the two: highlight, suppress, or filter.
- Set temporal offset for comparisons of temporal events.
- Create animation files for AVI output.
- Create a data clock temporal chart for additional analysis.

Historical Satellite Point and Polygon Data in Playback



Track Data Fed to a Customized Internet Client

Potential Applications

Developed in conjunction with Northrop Grumman IT/TASC, ArcGIS Tracking Analyst can be used alone or combined with other ArcGIS extensions to create powerful applications for transportation, emergency response, military, and a host of other purposes.

Used in conjunction with the ArcIMS Tracking Server, the extension supports the display, management, and broadcast of real-time data over the Internet from GPS, custom data feeds, and similar technologies*.

Developer Tools

The extension allows for complete customization by writing macros in Visual Basic for Applications (included with ArcGIS Desktop) or creating extensions for ArcGIS Desktop, developed in standard development environments (VB, C++, Delphi, etc.). The extension includes a tool set for system integrators and advanced users with more than 50 new ArcObjects™ components.

Supported Platforms

ArcGIS Tracking Analyst is available for Windows NT® 4.0, Windows® 2000, and Windows XP (Home Edition and Professional). ArcGIS Tracking Analyst requires ArcGIS 8.3 Desktop (ArcInfo™, ArcEditor™, or ArcView).



Historical Earthquake Data in Southern California, Using the Tracking Analyst Data Clock

TRY ArcGIS Tracking Analyst
➔ www.esri.com/trackinganalyst

* Check the ArcGIS Tracking Analyst Web page for availability of ArcIMS Tracking Server.



For more than 30 years ESRI has been helping people manage and analyze geographic information. ESRI offers a framework for implementing GIS technology in any organization with a seamless link from personal GIS on the desktop to enterprisewide GIS client/server and data management systems. ESRI GIS solutions are flexible and can be customized to meet the needs of our users. ESRI is a full-service GIS company, ready to help you begin, grow, and build success with GIS.

Corporate

ESRI
380 New York Street
Redlands, California
92373-8100, USA
Telephone: 909-793-2853
Fax: 909-793-5953

For more information
on ESRI, call

1-800-447-9778

(1-800-GIS-XPRT)

or contact an ESRI reseller near you.

Send e-mail inquiries to

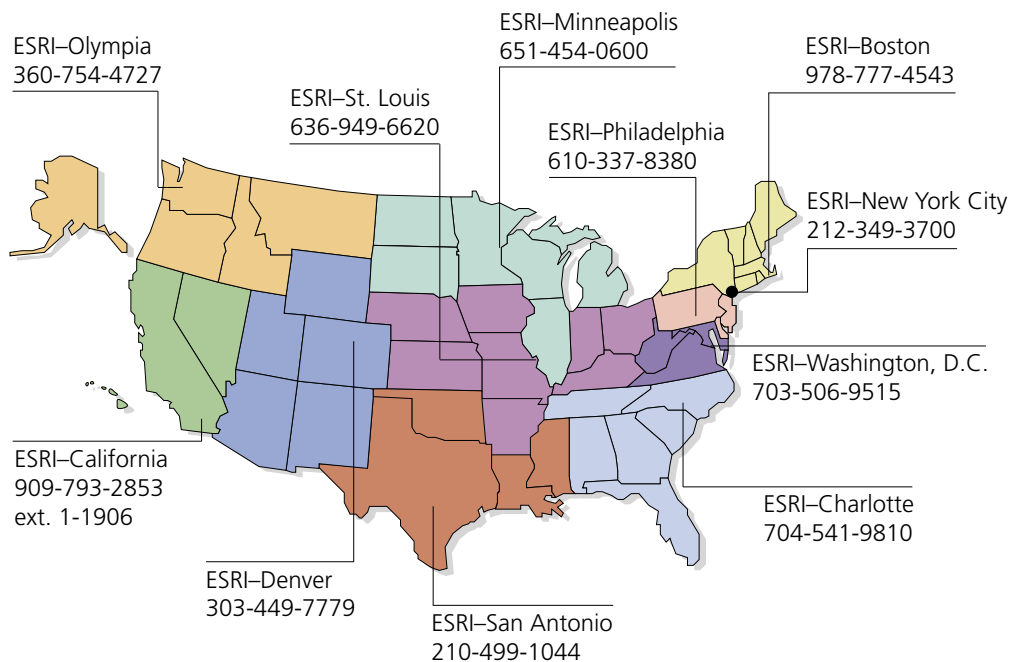
info@esri.com

Visit ESRI's Web page at

www.esri.com

Outside the United States,
contact your local ESRI distributor.
For the number of your distributor,
call ESRI at 909-793-2853,
ext. 1235,
or visit our Web site at
www.esri.com/international

Regional Offices



International Offices

Australia 613-9867-0447	France 33-1-46-23-6060	Japan 81-3-3794-6681	Singapore 65-742-8622
Belgium/Luxembourg 32-2-460-7480	Germany/Switzerland 49-8166-677-0 41-1-360-2460	Korea 82-2-571-3161	Spain 34-91-559-4375
Bulgaria 359-2-964-0850	Hungary 361-428-8040	Netherlands 31-10-217-0700	Sweden 46-23-755-400
Canada 416-441-6035	India 91-11-2620-3800	Poland 48-22-326-7300	Thailand 66-2-678-0707
China 852-2730-6883	Indonesia/Malaysia 62-21-570-7685 603-7874-9930	Portugal 351-2-1-781-6640	United Kingdom 44-1296-745-500
	Italy 39-06-406-96-1	Romania 40-21-231-13-81	Venezuela 58-212-285-9394

Place ESRI business partner or distributor address here.

Copyright © 2003 ESRI. All rights reserved. ESRI, the ESRI globe logo, the ArcGIS logo, ArcView, ArcIMS, ArcMap, ArcInfo, ArcEditor, ArcObjects, ArcGIS, @esri.com, and www.esri.com are trademarks, registered trademarks, or service marks of ESRI in the United States, the European Community, or certain other jurisdictions. Other companies and products mentioned herein are trademarks or registered trademarks of their respective trademark owners.



No. GS-35F-5086H