



ArcPad™

Mapping and GIS for Mobile Systems

ArcPad

Mapping and GIS for Mobile Systems



An Overview of ArcPad

ESRI's ArcPad™ software is a mobile geographic information system (GIS). ArcPad provides database access, mapping, GIS, and global positioning system (GPS) integration to users out in the field via handheld and mobile devices. Data collection with ArcPad is fast and easy and significantly improved with immediate data validation and availability.

Leverage Your GIS

ArcPad leverages existing mapping and GIS software systems and databases. There is no need to convert data to unique portable formats. ArcPad supports a multilayer environment with industry-standard vector map and raster image display that includes aerial photographs and satellite imagery. Data obtained in the field can easily be uploaded into the master database in the office. Simply create custom input forms from your existing GIS database for use in ArcPad.

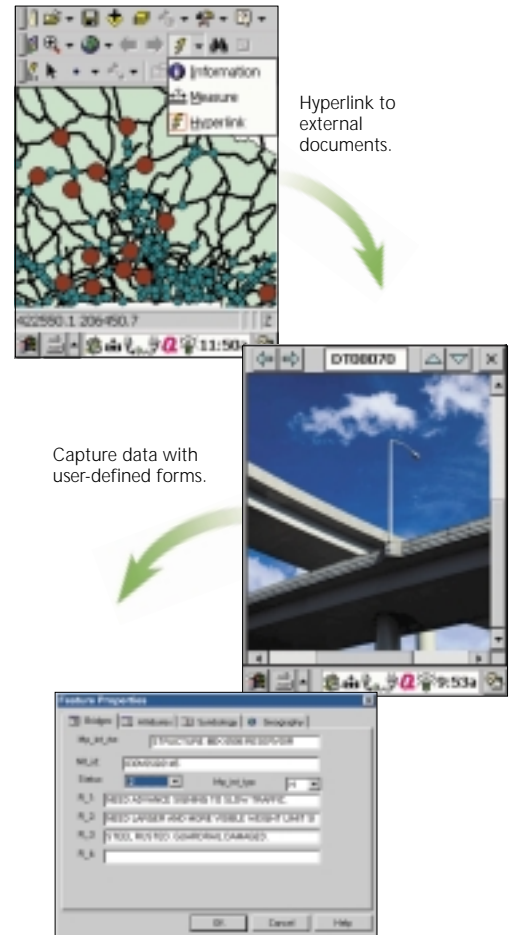
ArcPad supports wireless data acquisition. ArcPad can act as a client to ArcIMS™, ESRI's Internet mapping and GIS software, or to the Geography Network™ (www.geographynetwork.com). Data is downloaded to ArcPad using a TCP/IP connection such as a wireless local area network, cellular phone, or a wireless modem. The combination of online and existing offline data capabilities makes ArcPad an invaluable tool for users out in the field.

GPS-Enable Your GIS

ArcPad also offers integration with an optional GPS or differential GPS. ArcPad is currently GPS-enabled for use with Trimble, Magellan, and Ashtech brand receivers within the United States. ArcPad can display and automatically save GPS information in ArcPad data files. Other GPS receivers can be used to display GPS information and serve as basic navigation tools. Outside the United States, ArcPad is GPS-enabled for all compatible GPS receiver brands. ArcPad supports GPS receivers that output the NMEA or TSIP protocols, in addition to the DeLorme Earthmate receiver.

Enhance Your GIS

ArcPad is designed to be a field-based extension to your GIS system. The ability to compare data directly to geographic features in the real world adds a deeper sense of reality to the GIS database. It also opens many new avenues for mobile data collection and display. ArcPad is a complement to ESRI's existing comprehensive family of GIS and mapping software.

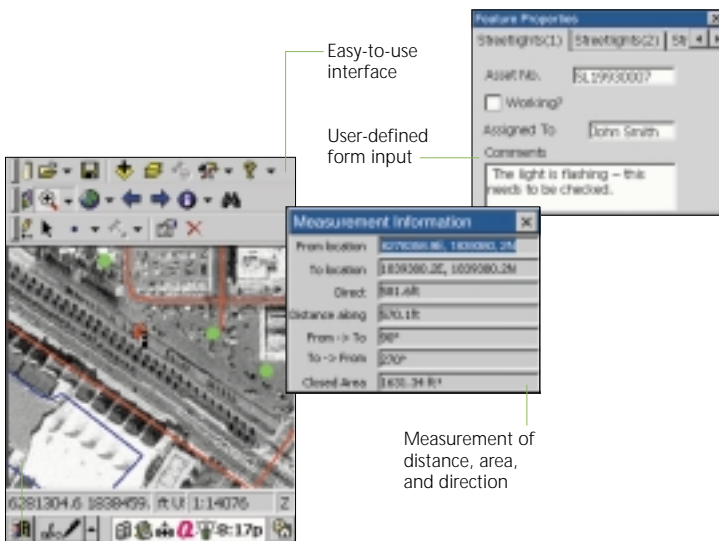


ArcPad

Many Potential Applications

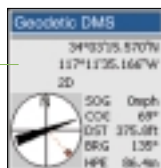
ArcPad enables specialized mapping and data collection in a wide range of industries and applications including the following:

- Street sign inventory
- Power pole maintenance
- Meter reading
- Road pavement management
- Military fieldwork
- Toxic inventory
- Mineral exploration
- Habitat studies
- Crop management
- Property damage assessment



Multiple vector and image layers

GPS interface



Key Features

Supported Data Formats

- Shapefiles
- JPEG
- MrSID™ by LizardTech
- Windows® bit map
- CADRG
- ArcIMS image services via wireless communication

Projections

- Geodetic coordinates (latitude/longitude)
- Universal Transverse Mercator (UTM)
- Gauss-Kruger
- Lambert conformal conic
- Cylindrical equal area

Display and Query

- Comprehensive map navigation tools
- Feature and attribute identification
- Hyperlink to external files (photographs, documents, video, etc.)
- Measure distance, area, and direction
- User-controlled symbology
- Scale-dependent layer drawing
- Save map layer and style configurations

Editing and Data Capture

- Create, edit, delete, and move features
- Use input from pen, cursor, or GPS
- User-defined forms
- Database oriented

Optional GPS

- Support for NMEA and TSIP protocols
- Current position
- Track log layer stores GPS position
- Capture points, lines, and polygons
- Compass direction
- Direction/Distance to destination

User Interface

- Easy to use
- Intuitive
- Optimized for Windows CE devices

ArcPad Tools for ArcView® GIS

- Data integration
- Extract, convert, and project
- Export symbology
- Export forms
- Export simple metadata

Operating System

- Windows CE 2.11, 2.12, and 3.0 (Pocket PC)

CPU Chips

- Hitachi SH3 and SH4
- StrongARM®
- MIPS
- Windows 95/98, NT, and 2000



For more than 30 years ESRI has been helping people manage and analyze geographic information. ESRI offers a framework for implementing GIS in any organization with a seamless link from personal GIS on the desktop to enterprisewide GIS client/server and data management systems. ESRI® GIS solutions are flexible and can be customized to meet the needs of our users. ESRI is a full-service GIS company, ready to help you begin, grow, and build success with GIS.

Corporate

ESRI
380 New York Street
Redlands, California
92373-8100, USA
Telephone: 909-793-2853
Fax: 909-793-5953

For more information
call ESRI or your
local reseller at

1-800-447-9778
(1-800-GIS-XPRT)

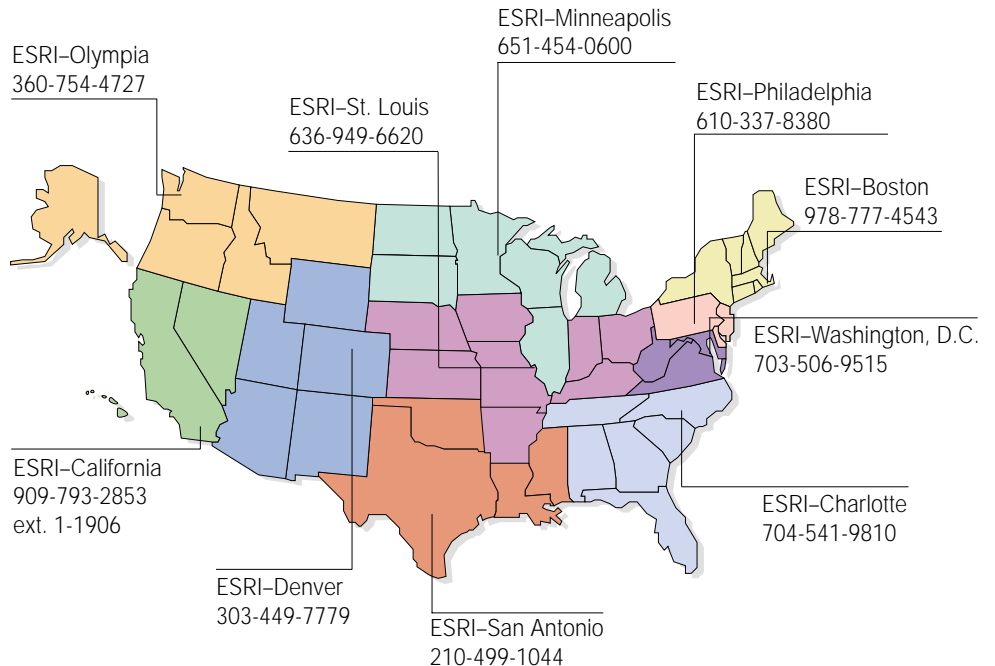
Send e-mail inquiries to
info@esri.com

Visit ESRI's Web site at
www.esri.com

Outside the United States,
contact your local ESRI distributor.
For the number of your distributor,
call ESRI at 909-793-2853,
ext. 1-1235,
or visit our Web site at
www.esri.com/international



Regional Offices



International Offices

Australia 61-39-822-6222	Germany and Switzerland 49-8166-677-0 41-1-360-2460	Italy 39-06-406-96-1	Singapore 65-742-8622
Belgium/Luxembourg 32-2-460-7480	Hong Kong 852-2730-6883	Korea 82-2-571-3161	Spain 34-91-559-4375
Bulgaria 359-2-560-871	Hungary 361-428-8040	Netherlands 31-10-217-0700	Sweden 46-23-755-400
Canada 416-441-6035	India 91-11-620-3802	Poland 48-22-825-9836	Thailand 66-2-678-0707
France 33-1-46-23-6060	Indonesia and Malaysia 62-21-570-7685 603-7874-9930	Portugal 351-2-1-781-6640	United Kingdom 44-1296-745-500
		Romania 40-1-231-13-81	Venezuela 58-212-285-1134

Copyright © 2001 ESRI. All rights reserved. ArcView, ESRI, and the ESRI globe logo are trademarks of ESRI, registered in the United States and certain other countries; registration is pending in the European Community. ArcPad, the ArcPad logo, ArcIMS, and GIS by ESRI are trademarks and Geography Network, www.geographynetwork.com, @esri.com, and www.esri.com are service marks of ESRI. Other companies and products mentioned herein are trademarks or registered trademarks of their respective trademark owners.



Place ESRI business partner or distributor address here.