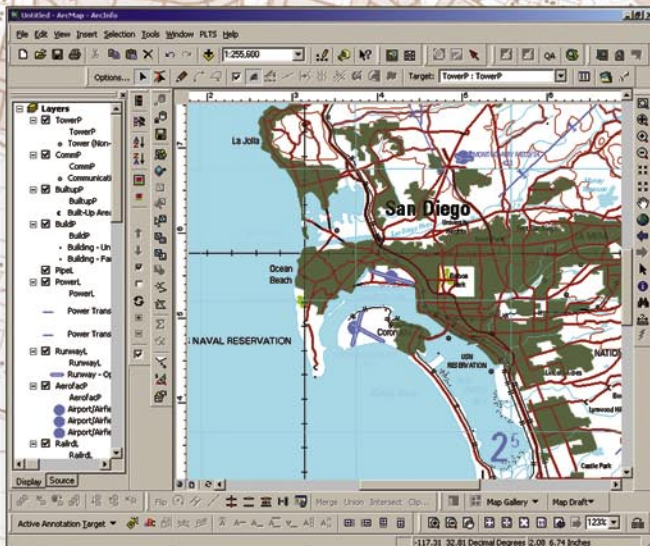


# PLTS for Topographic Mapping



## Topographic Mapping

### GIS Tools for Topographic Map Production

The Production Line Tool Set (PLTS) by ESRI is commercial off-the-shelf (COTS) software designed to manage, build, and maintain digital databases and hardcopy map products in a production environment. PLTS leverages the object-relational ArcGIS™ Desktop technology to provide a next-generation functionality-rich software suite that streamlines the production process.

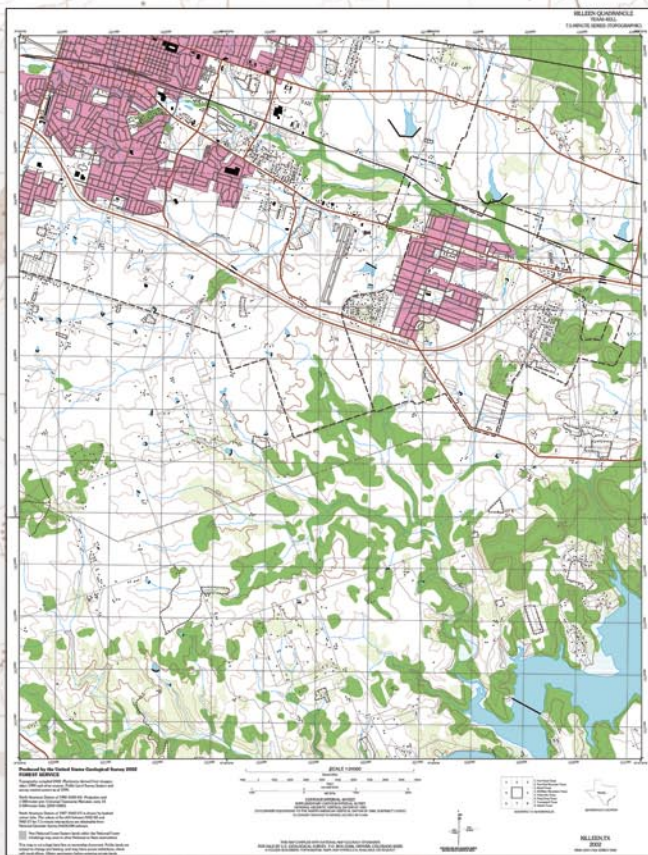
### Topographic Database Tools

PLTS has been used to create topographic data sets from scales of 1:24,000 to 1:1 million. PLTS uses geodatabase models, specification tables, single-click editing tools, and production indexes that combine to form a tightly integrated production flow. PLTS provides all the tools required for data collection, quality assurance, and hardcopy output.

### Map Production System

The Map Production System (MPS) is designed to facilitate cartographic production of hardcopy topographic products. MPS is used to create map layouts, generate surround elements, and access map sheet information as well as make cartographic enhancements to the data. MPS includes the map series specifications, surround elements, and symbology for Topographic Line Maps (TLM50 and TLM100), Joint Operations Graphic (JOG-A), and USGS topographic maps. Layouts use custom placement rules to automatically update the placement of surround elements as the maps change size and extent. The MPS surround element library includes scale bars, north arrows, adjoining sheet references, boundary guides, elevation guides, and conversion graphs.

## GIS for Production



For more information,

Visit: [www.esri.com/plts](http://www.esri.com/plts)  
E-mail: [plts@esri.com](mailto:plts@esri.com)





For more than 30 years ESRI has been helping people manage and analyze geographic information. ESRI offers a framework for implementing GIS technology in any organization with a seamless link from personal GIS on the desktop to enterprisewide GIS client/server and data management systems. ESRI GIS solutions are flexible and can be customized to meet the needs of our users. ESRI is a full-service GIS company, ready to help you begin, grow, and build success with GIS.

## Corporate

ESRI  
380 New York Street  
Redlands, California  
92373-8100, USA  
Telephone: 909-793-2853  
Fax: 909-793-5953

For more information  
on ESRI, call

**1-800-447-9778**

(1-800-GIS-XPRT)

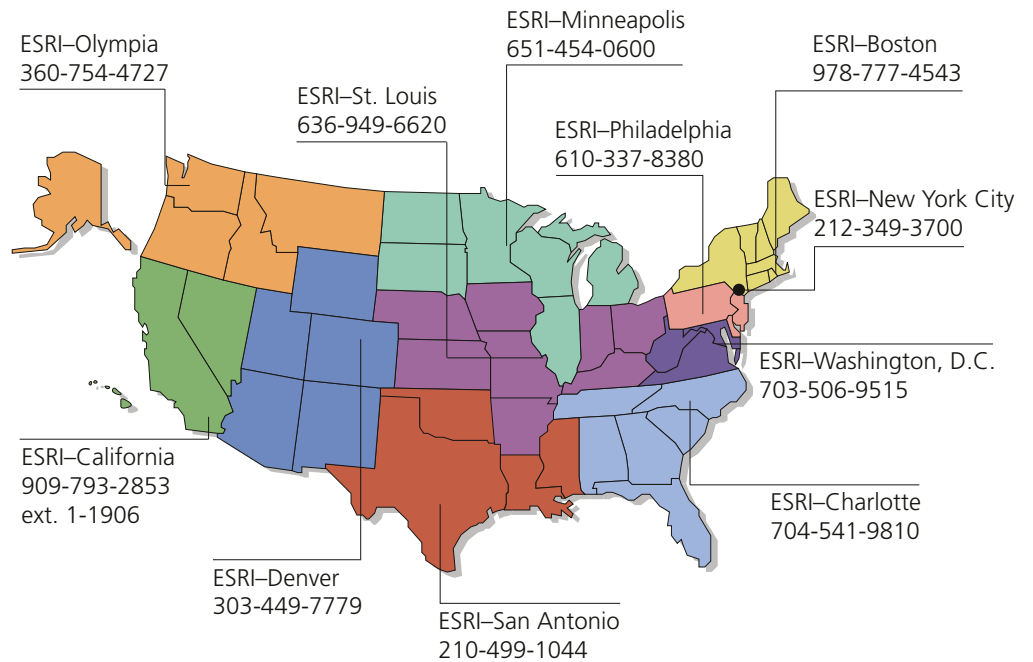
or contact an ESRI reseller near you.

Send e-mail inquiries to  
**info@esri.com**

Visit ESRI's Web page at  
**www.esri.com**

Outside the United States,  
contact your local ESRI distributor.  
For the number of your distributor,  
call ESRI at 909-793-2853,  
ext. 1235,  
or visit our Web site at  
**www.esri.com/international**

## Regional Offices



## International Offices

Australia 613-9867-0447	France 33-1-46-23-6060	Japan 81-3-3794-6681	Singapore 65-6742-8622
Belgium/Luxembourg 32-2-460-7480	Germany/Switzerland 49-8166-677-0 41-1-360-2460	Korea 82-2-571-3161	Spain 34-91-559-4375
Bulgaria 359-2-964-0850	Hungary 361-428-8040	Netherlands 31-10-217-0700	Sweden 46-23-755-400
Canada 416-441-6035	India 91-11-2620-3800	Poland 48-22-326-7300	Thailand 66-2-678-0707
China (Beijing) 86-10-6554-1618	Indonesia/Malaysia 62-21-527-1023 603-7874-9930	Portugal 351-2-1-781-6640	United Kingdom 44-1296-745-500
China (Hong Kong) 852-2730-6883	Italy 39-06-406-96-1	Romania 40-21-231-13-81	Venezuela 58-212-285-9394



Place ESRI business partner or distributor address here.

Copyright © 2003 ESRI. All rights reserved. ESRI, the ESRI globe logo, ArcGIS, ArcInfo, ArcMap, @esri.com, www.esri.com are trademarks, registered trademarks, or service marks of ESRI in the United States, the European Community, or certain other jurisdictions. Other companies and products mentioned herein are trademarks or registered trademarks of their respective trademark owners.



No. GS-35F-5086H