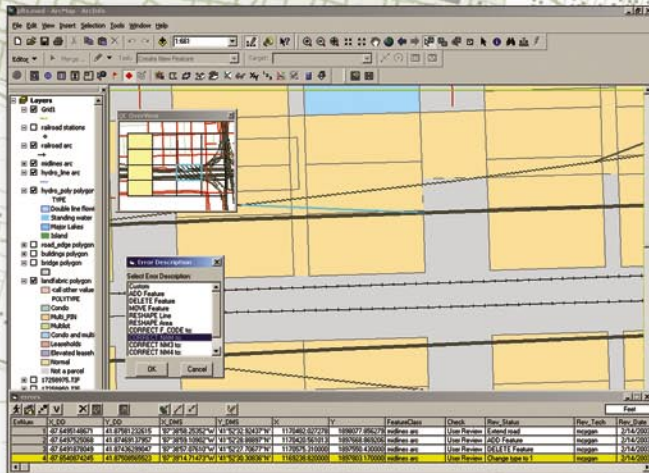
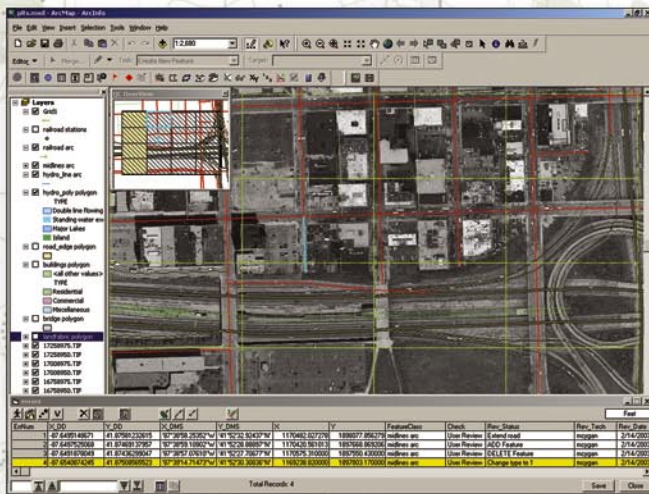


GIS Data ReViewer



*GIS for
Production*



GIS Quality Control Tools

GIS Data ReViewer is a customizable product developed for the ArcMap™ application by ESRI's Production Line Tool Set (PLTS) Group to support the visual review and batch validation of data. ArcMap is an application within the ArcGIS™ Desktop suite of products (ArcView®, ArcEditor™, and ArcInfo™).

GIS Data ReViewer is composed of a series of buttons, tools, and context menus and is used to identify where corrections, additions, and deletions must be made to spatial data and spatial data attributes. Errors are logged into a table that stores the x,y position of each error, the feature class name, a description of the error, and other information for historical tracking.

The GIS Data ReViewer serves as a reviewing tool for both automated and visual database validation. The automated batch tools write results directly to the error table.

The GIS Data ReViewer Enables You To

- Make and log corrections to data.
- Verify corrections made to data.
- Locate errors in data capture/attribution with a variety of tools.
- Log error information easily and accurately.
- Eliminate the paper trail associated with error files by storing data error information in one database.
- Coordinate the data review effort.
- Perform batch validation of a geodatabase.
- Generate random samples for quality control.

For more information,

Visit: www.esri.com/reviewer
E-mail: plts@esri.com





For more than 30 years ESRI has been helping people manage and analyze geographic information. ESRI offers a framework for implementing GIS technology in any organization with a seamless link from personal GIS on the desktop to enterprisewide GIS client/server and data management systems. ESRI GIS solutions are flexible and can be customized to meet the needs of our users. ESRI is a full-service GIS company, ready to help you begin, grow, and build success with GIS.

Corporate

ESRI
380 New York Street
Redlands, California
92373-8100, USA
Telephone: 909-793-2853
Fax: 909-793-5953

For more information
on ESRI, call

1-800-447-9778

(1-800-GIS-XPRT)

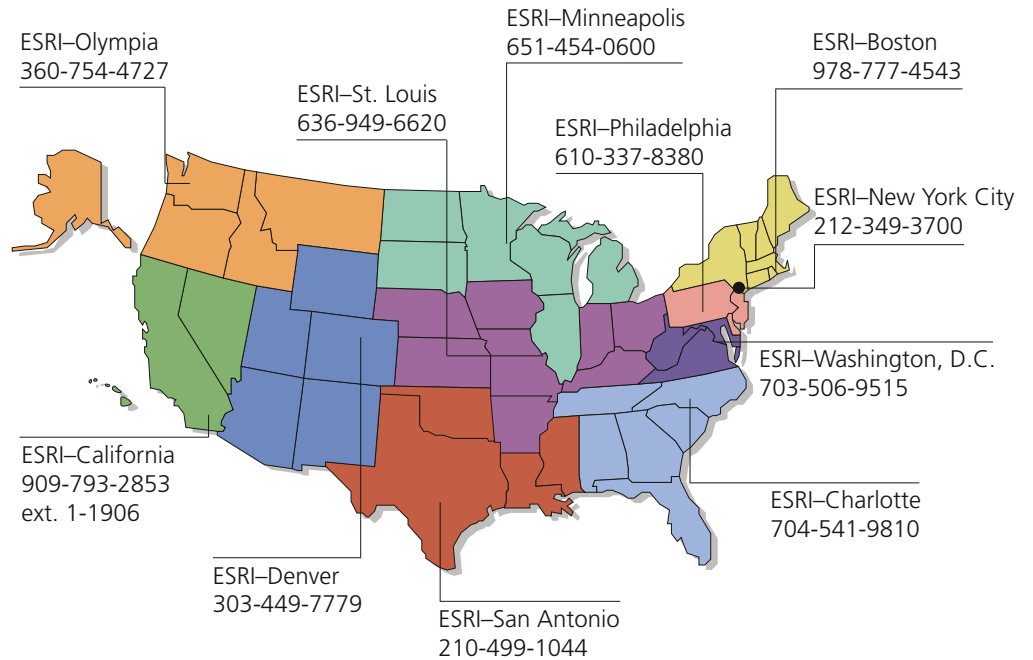
or contact an ESRI reseller near you.

Send e-mail inquiries to
info@esri.com

Visit ESRI's Web page at
www.esri.com

Outside the United States,
contact your local ESRI distributor.
For the number of your distributor,
call ESRI at 909-793-2853,
ext. 1235,
or visit our Web site at
www.esri.com/international

Regional Offices



International Offices

Australia 613-9867-0447	France 33-1-46-23-6060	Japan 81-3-3794-6681	Singapore 65-6742-8622
Belgium/Luxembourg 32-2-460-7480	Germany/Switzerland 49-8166-677-0 41-1-360-2460	Korea 82-2-571-3161	Spain 34-91-559-4375
Bulgaria 359-2-964-0850	Hungary 361-428-8040	Netherlands 31-10-217-0700	Sweden 46-23-755-400
Canada 416-441-6035	India 91-11-2620-3800	Poland 48-22-326-7300	Thailand 66-2-678-0707
China (Beijing) 86-10-6554-1618	Indonesia/Malaysia 62-21-527-1023 603-7874-9930	Portugal 351-2-1-781-6640	United Kingdom 44-1296-745-500
China (Hong Kong) 852-2730-6883	Italy 39-06-406-96-1	Romania 40-21-231-13-81	Venezuela 58-212-285-9394



Place ESRI business partner or distributor address here.

Copyright © 2003 ESRI. All rights reserved. ESRI, the ESRI globe logo, ArcGIS, ArcView, ArcInfo, ArcEditor, ArcMap, @esri.com, www.esri.com are trademarks, registered trademarks, or service marks of ESRI in the United States, the European Community, or certain other jurisdictions. Other companies and products mentioned herein are trademarks or registered trademarks of their respective trademark owners.



No. GS-35F-5086H