

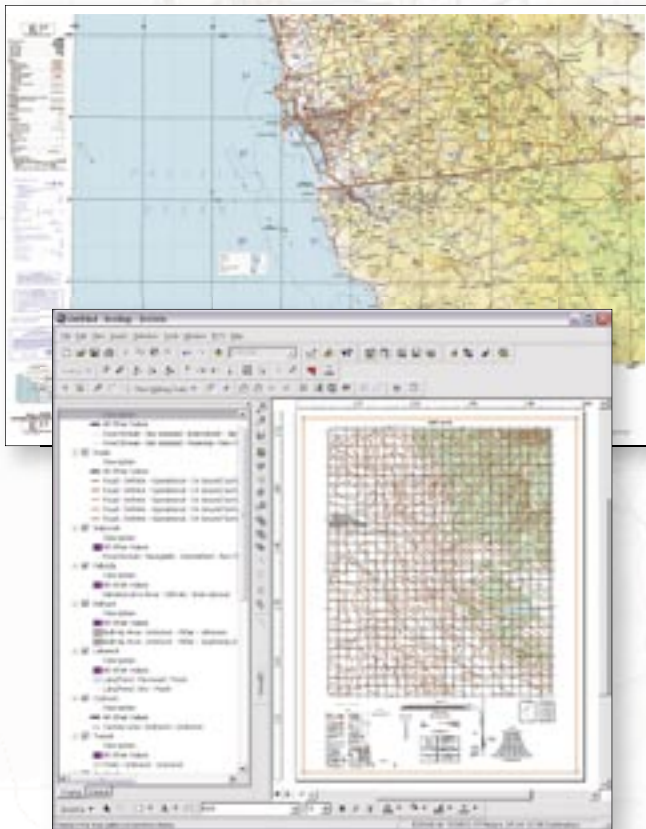
# PLTS for ArcGIS®—Defense Solution

## Defense Database Production and Mapping

### GIS Tools for Defense

Production Line Tool Set (PLTS) for ArcGIS®—Defense Solution provides tools to reduce cost and improve the efficiency of creating and maintaining high-quality topographic databases for publishing professional map products and data analysis. PLTS for ArcGIS leverages the object-relational ArcGIS technology to streamline production in a consistent process, enabling you to do more with fewer resources. From source compilation through database editing and cartographic finishing, Defense Solution delivers efficient workflow tools for

- National Defense Agencies
- Defense Mapping Organizations
- Defense Contractors
- Military Surveys
- Strategic and National Defense Headquarters
- Command Centers



### Military Specification Models

Defense Solution allows for rapid creation and updating of many products including Feature Database (FDB), Vector Map Level 1 (VMap 1), 1:250,000-scale Joint Operations Graphic–Air (JOG-A), Vector Map Level 2 (VMap 2), and 1:50,000/1:100,000 Topographic Line Map (TLM) products. The Foundation Feature Data (FFD), VMap 1, and VMap 2 coverage models are included and used to produce standard databases in Vector Product Format (VPF). Other defense data models and products are available with Defense Solution and can be customized to meet your requirements. These data models and products can be maintained and utilized throughout the enterprise and disseminated and exploited in the theater of operation.

### Defense Database Tools

Defense Solution is used to create data based on National Geospatial-Intelligence Agency (NGA) specifications from large to small scale. It combines topographic geodatabase models, user-definable knowledge bases, single-click editing, attribution, and quality control tools to offer a tightly integrated production flow. Job Tracking for ArcGIS (JTX) is also included for project tracking, workflow management, and feature-level history tracking. These efficiency tools can be customized according to your organization's processes, business rules, and product specifications.

### Database-Driven Cartography

Map Production System (MPS) within Defense Solution facilitates cartographic production of hardcopy topographic products from a geodatabase in a user-specified relational database management system (RDBMS). A map series, or template information, is stored in a geodatabase. Source data, projects, products, and map sheets are cataloged and spatially managed in the Project and Map Sheet Catalog (PMC). The stored map sheet information automates the process of map sheet generation. Several existing map series are included with Defense Solution, and tools are provided so you can easily create your own customized map series. MPS provides a number of industry-standard surround elements and symbol styles that can be used in any map product you choose.

*Database-Driven Data  
and Map Products*

For more information,

Visit: [www.esri.com/plts](http://www.esri.com/plts)  
E-mail: [plts@esri.com](mailto:plts@esri.com)





For more than 30 years ESRI has been helping people manage and analyze geographic information. ESRI offers a framework for implementing GIS technology in any organization with a seamless link from personal GIS on the desktop to enterprisewide GIS client/server and data management systems. ESRI GIS solutions are flexible and can be customized to meet the needs of our users. ESRI is a full-service GIS company, ready to help you begin, grow, and build success with GIS.

## Corporate

ESRI  
380 New York Street  
Redlands, California  
92373-8100, USA  
Telephone: 909-793-2853  
Fax: 909-793-5953

For more information  
on ESRI, call

**1-800-447-9778**

(1-800-GIS-XPRT)

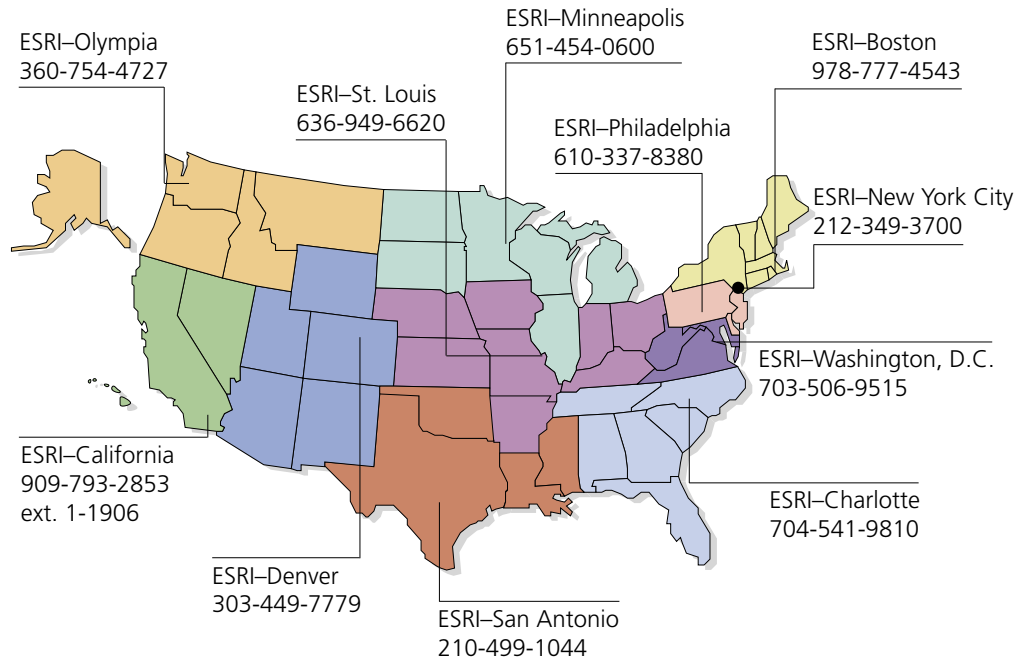
or contact an ESRI reseller near you.

Send e-mail inquiries to  
**info@esri.com**

Visit ESRI's Web page at  
**www.esri.com**

Outside the United States,  
contact your local ESRI distributor.  
For the number of your distributor,  
call ESRI at 909-793-2853,  
ext. 1235,  
or visit our Web site at  
**www.esri.com/international**

## Regional Offices



## International Offices

Australia  
www.esriaustralia.com.au

Finland  
www.esri-finland.com

Italy  
www.esriitalia.it

Romania  
www.esriro.ro

Belgium/Luxembourg  
www.esribelux.com

France  
www.esrifrance.fr

Japan  
www.esrij.com

Singapore  
www.esrisa.com

Bulgaria  
www.esribulgaria.com

Germany/Switzerland  
www.esri-germany.de  
www.esri-suisse.ch

Korea  
www.esrikr.co.kr

Spain  
www.esri-es.com

Canada  
www.esricanada.com

Hungary  
www.esrihu.hu

Netherlands  
www.esrinl.com

Sweden  
www.esri-sweden.com

China (Beijing)  
www.esrichina-bj.cn

India  
www.esriindia.com

Poland  
www.esripolska.com.pl

Thailand  
www.esrith.com

China (Hong Kong)  
www.esrichina-hk.com

Indonesia/Malaysia  
62-21-527-1023  
603-7874-9930

Portugal  
www.esri-portugal.pt

United Kingdom  
www.esriuk.com

Venezuela  
www.esriven.com

Place ESRI business partner or distributor address here.

Copyright © 2004 ESRI. All rights reserved. ESRI, the ESRI globe logo, ArcGIS, ArcMap, ArcInfo, @esri.com, and www.esri.com are trademarks, registered trademarks, or service marks of ESRI in the United States, the European Community, or certain other jurisdictions. Other companies and products mentioned herein are trademarks or registered trademarks of their respective trademark owners.



No. GS-35F-5086H