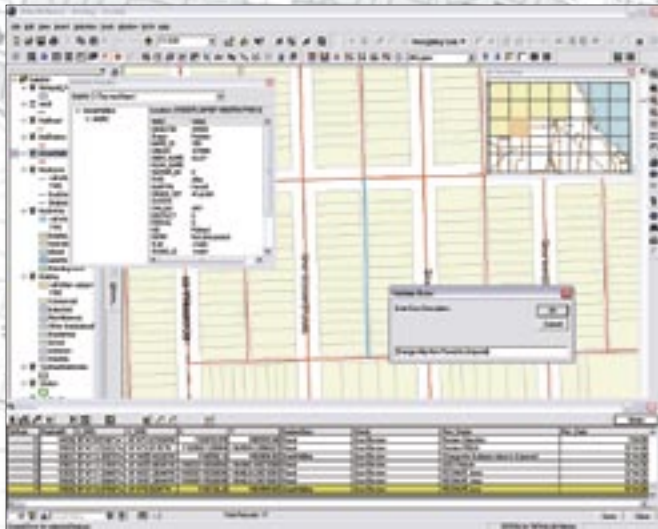
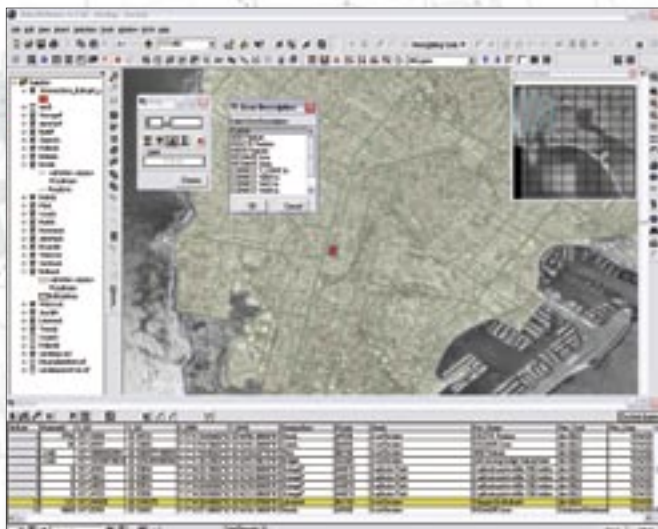


# GIS Data ReViewer



## *GIS for Production*



### GIS Quality Control Tools

GIS Data ReViewer is a data quality management tool that simplifies automated and visual data quality control tasks, resulting in a more efficient and consistent review process. Developed for the ArcMap™ application within the ESRI® ArcGIS® Desktop products (ArcView®, ArcEditor™, and ArcInfo®), GIS Data ReViewer is a customizable product that supports quality assurance and quality control (QA/QC) processes.

Composed of a series of tools, GIS Data ReViewer is used to identify where geometric corrections, missing features, extraneous features, and feature attribution changes must be made to spatial data and its attributes. Errors are logged into a table that stores the x,y position of the error, the feature class name, a description of the error, user name, date stamp, and other information for historical tracking.

GIS Data ReViewer is used in many industries including federal, state, and local government; water resource agencies; utilities; data conversion contractors; data production companies; and defense organizations.

### With GIS Data ReViewer you can

- Log error information easily and accurately.
- Locate spatial and attribute errors with a variety of tools.
- Visit logged errors automatically.
- Log corrections to data.
- Verify corrections made to data.
- Coordinate the data review effort in your enterprise.
- Perform batch validation of a geodatabase.
- Generate random samples for quality control.
- Manage your work extent more efficiently.

GIS Data ReViewer provides consistent and repeatable QA/QC validation, increasing users' confidence in their data and empowering them to perform analysis and make reliable business decisions.

For more information, visit  
[www.esri.com/reviewer](http://www.esri.com/reviewer)  
or e-mail [plts@esri.com](mailto:plts@esri.com)





For more than 30 years ESRI has been helping people manage and analyze geographic information. ESRI offers a framework for implementing GIS technology in any organization with a seamless link from personal GIS on the desktop to enterprisewide GIS client/server and data management systems. ESRI GIS solutions are flexible and can be customized to meet the needs of our users. ESRI is a full-service GIS company, ready to help you begin, grow, and build success with GIS.

## Corporate

ESRI  
380 New York Street  
Redlands, California  
92373-8100, USA  
Telephone: 909-793-2853  
Fax: 909-793-5953

For more information  
on ESRI, call

**1-800-447-9778**

(1-800-GIS-XPRT)

or contact an ESRI reseller near you.

Send e-mail inquiries to

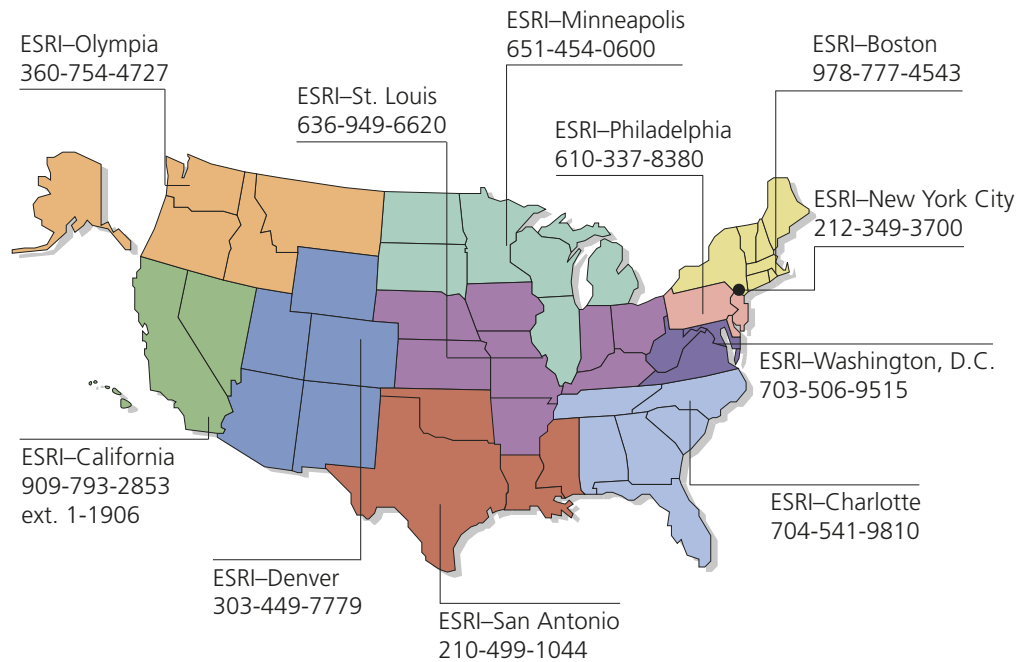
**info@esri.com**

Visit ESRI's Web page at

**www.esri.com**

Outside the United States,  
contact your local ESRI distributor.  
For the number of your distributor,  
call ESRI at 909-793-2853,  
ext. 1235,  
or visit our Web site at  
**www.esri.com/international**

## Regional Offices



## International Offices

Australia  
www.esriaustralia.com.au

Finland  
www.esri-finland.com

Italy  
www.esriitalia.it

Romania  
www.esriro.ro

Belgium/Luxembourg  
www.esribelux.com

France  
www.esrifrance.fr

Japan  
www.esrij.com

Singapore  
www.esrisa.com

Bulgaria  
www.esribulgaria.com

Germany/Switzerland  
www.esri-germany.de  
www.esri-suisse.ch

Korea  
www.esrikr.co.kr

Spain  
www.esri-es.com

Canada  
www.esricanada.com

Hungary  
www.esrihu.hu

Netherlands  
www.esrinl.com

Sweden  
www.esri-sweden.com

China (Beijing)  
www.esrichina-bj.cn

India  
www.esriindia.com

Poland  
www.esripolska.com.pl

Thailand  
www.esri-th.com

China (Hong Kong)  
www.esrichina-hk.com

Indonesia/Malaysia  
62-21-527-1023  
603-7874-9930

Portugal  
www.esri-portugal.pt

United Kingdom  
www.esriuk.com

Venezuela  
www.esriven.com



Place ESRI business partner or distributor address here.

Copyright © 2004 ESRI. All rights reserved. ESRI, GIS by ESRI, ArcView, ArcIMS, the ESRI globe logo, ArcInfo, ArcEditor, ArcSDE, ArcGIS, @esri.com, www.esri.com, and Geography Network are trademarks, registered trademarks, or service marks of ESRI in the United States, the European Community, or certain other jurisdictions. Other companies and products mentioned herein are trademarks or registered trademarks of their respective trademark owners.

