

Production Line Tool Sets

*Tools for high-quality database
production and cartographic output*



Production Line Tool Sets

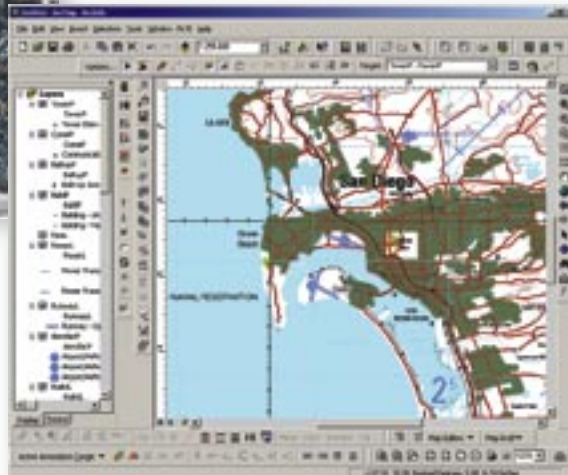
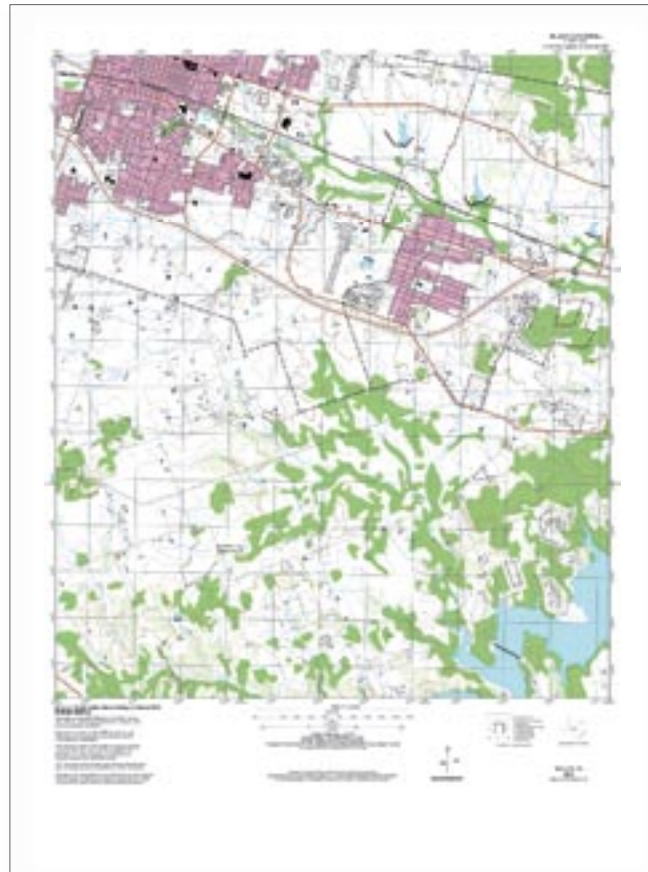


Production Line Tool Sets (PLTS) by ESRI are a collection of software applications that provide efficient production and maintenance of digital cartographic databases. These streamlined processes allow users to create, manage, and exploit multiple map product databases with increased quality at a lower cost. PLTS are simple and easy-to-use software, built on COM components for maximum flexibility and efficiency.

Production Line Tool Sets

PLTS have been developed to produce mapping agency products for topographic and national mapping, aeronautical and nautical charting, forestry, census, and parcel mapping applications among others. In fact PLTS have been successfully employed in high-volume production environments at many national mapping agencies and commercial mapping companies around the world. They have also been successfully installed and extended to support other government and international mapping agencies in producing and maintaining a broad range of products.

PLTS operate on top of standard ESRI® ArcGIS™ software, providing tools designed to facilitate high-quality database production and cartographic output. Developed within the ESRI Services Production Group, PLTS are based on real-world project experience and efficiencies.



Database Centric

PLTS provide the tools to enable efficient geospatial data production. The database-centric approach enables the creation, maintenance, and output of reliable, cost-effective digital data and cartographic products.

Project and Map Sheet Database

Sources, production areas, and output products are organized and managed spatially in a geodatabase. This database houses source information in the form of hardcopy, vector, and imagery data. It provides a catalog, repository, and server for assigning production work orders. Finally, it is used to leverage digital data products and hardcopy maps from the geodatabase for publishing.

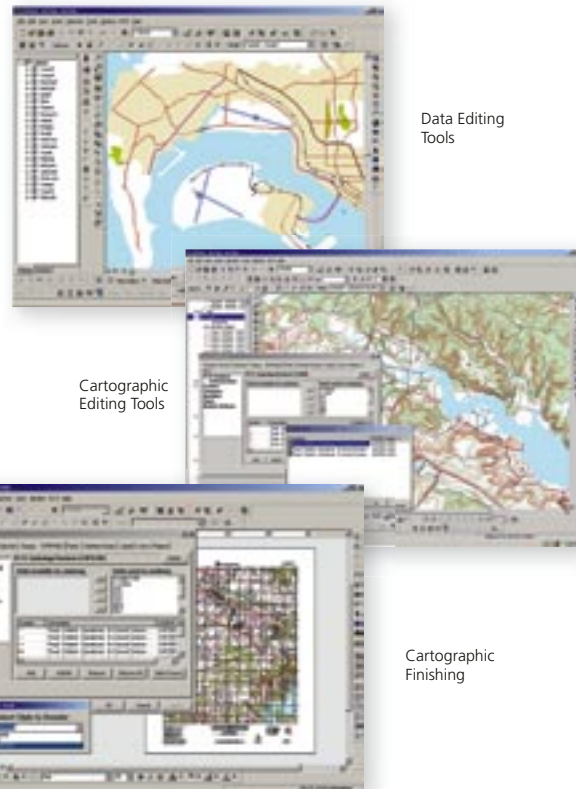
Geodatabase Editing Environment

PLTS streamline ArcGIS with single-click editing tools and extensions of geodatabase domains. Highly accurate geospatial data is created and maintained using menu-driven attribution tools. These attribution tools utilize user-defined integrity rules and behaviors, on-the-fly attribute validation, and in-process database quality control (QC).

Database-Driven Cartography

Data produced can be used for high-quality cartographic output through the use of the Map Production System (MPS). MPS is a customizable, database-driven cartographic production environment within PLTS. A single production database can be used for multiple cartographic products by employing different symbology schemas. Symbology is driven by attribute tables and map series definitions. This database-centric approach simplifies and facilitates product generation and maintenance, ensures data consistency, and enables map series production.

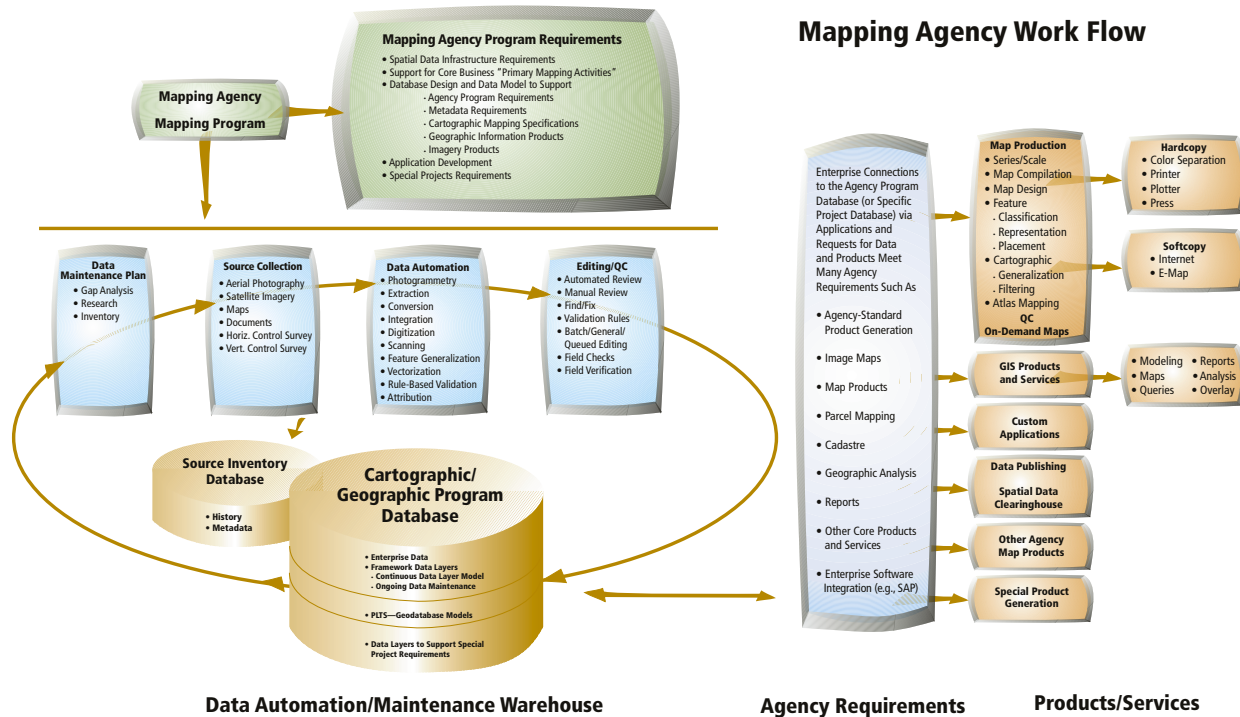
Geospatial: Collection to Output



- COM-compliant technology
- Customizable objects and user interface
- Robust cartographic capabilities
- In-process QC validation of attributes during editing
- WYSIWYG cartographic editing
- Custom renderer and on-the-fly symbology
- Integrated quality control tools

Robust Technology for Your Mapping Needs

Built on ArcGIS technology, PLTS are commercial off-the-shelf software designed around geodatabase data models. PLTS support each phase in the production work flow using procedures that guide users through an easy, step-by-step process for generating digital databases and hardcopy cartographic products. These cartographic products can then be published and disseminated as traditional hardcopy maps or via the Internet.



Support and Training

Production Line Tool Sets Support

ESRI offers technical support for each PLTS through a maintenance support plan purchased on an annual basis after the first year. Included are telephone hot line, fax, and e-mail support. The ESRI PLTS support team staff will respond to client support requests five days a week, 6:00 a.m. to 6:00 p.m., Pacific time. Support calls are channeled through ESRI's technical support number to the PLTS technical support team.



Production Line Tool Sets Training

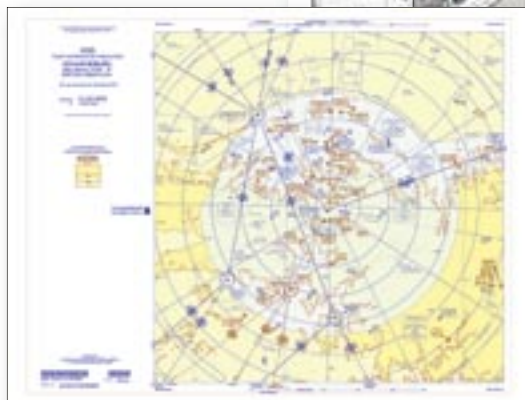
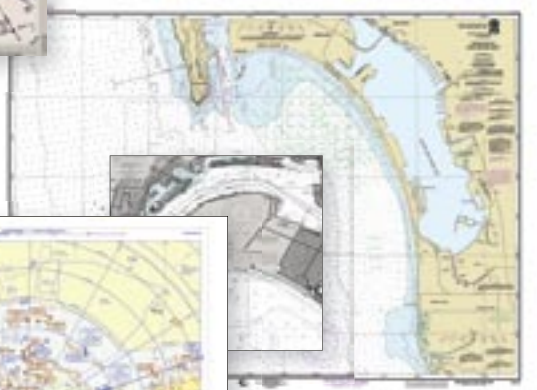
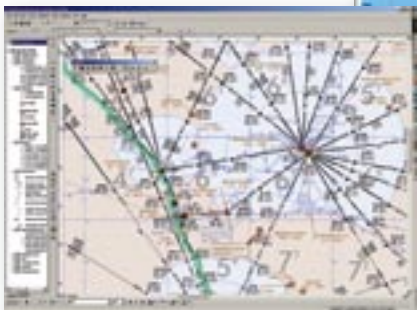
In addition to support, ESRI offers training for each PLTS. We highly recommend training for key staff who will be using these tool sets. The training, which varies in length from three to 15 days, can be conducted either at the ESRI headquarters training facility in Redlands, California, or at any appropriately equipped client site.

Who Can Use PLTS

PLTS extend ArcGIS for national and defense mapping organizations by turning their standard, static products into a single enterprise-wide database, giving them flexibility to serve any number of digital and hardcopy cartographic products.

PLTS enable organizations to perform

- Aeronautical Charting
- Cadastral/Parcel Mapping
- Census Mapping
- Defense Mapping
- Forestry/Natural Resources Mapping
- National Spatial Data Infrastructure Development
- Nautical Charting
- Topographic Mapping





For more than 30 years ESRI has been helping people manage and analyze geographic information. ESRI offers a framework for implementing geographic information system (GIS) technology in any organization with a seamless link from personal GIS on the desktop to enterprisewide GIS client/server and data management systems. ESRI GIS solutions are flexible and can be customized to meet the needs of our users. ESRI is a full-service GIS company, ready to help you begin, grow, and build success with GIS.

Corporate

ESRI
380 New York Street
Redlands, California
92373-8100, USA
Telephone: 909-793-2853
Fax: 909-793-5953

For more information
on ESRI, call

1-800-447-9778

(1-800-GIS-XPRT)

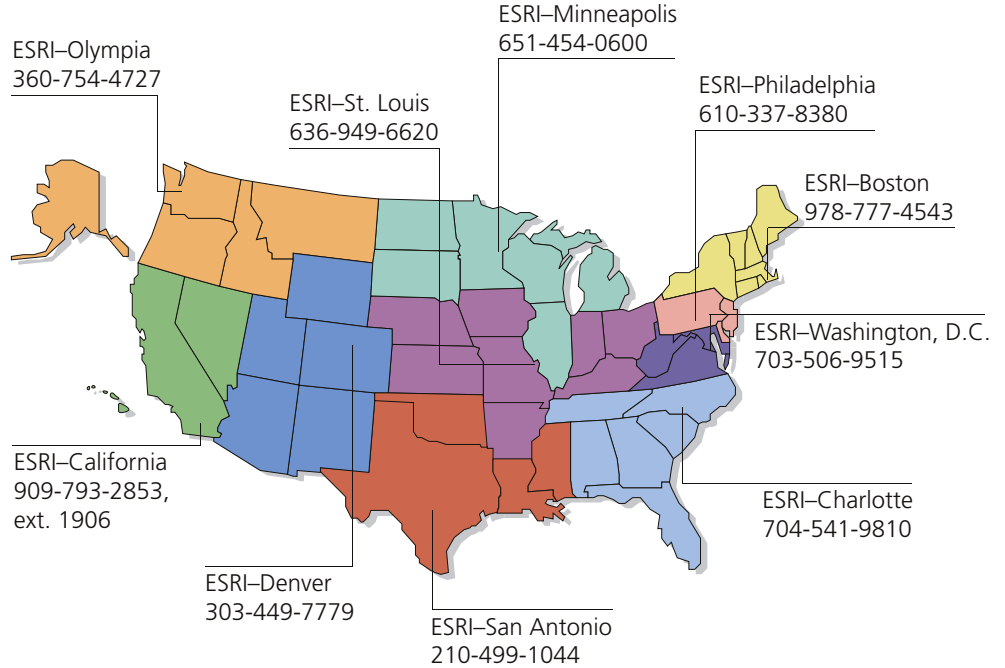
or contact an ESRI reseller near you.

Send e-mail inquiries to
info@esri.com

Visit ESRI's Web page at
www.esri.com

Outside the United States,
contact your local ESRI distributor.
For the number of your distributor,
call ESRI at 909-793-2853,
ext. 1235,
or visit our Web site at
www.esri.com/international

Regional Offices



International Offices

Australia 613-9867-0447	Germany and Switzerland 49-8166-677-0 41-1-360-2460	Japan 81-3-3794-6681	Singapore 65-742-8622
Belgium/Luxembourg 32-2-460-7480	Hong Kong 852-2730-6883	Korea 82-2-571-3161	Spain 34-91-559-4375
Bulgaria 359-2-964-0850	Hungary 361-428-8040	Netherlands 31-10-217-0700	Sweden 46-23-755-400
Canada 416-441-6035	India 91-11-620-3802	Poland 48-22-825-9836	Thailand 66-2-678-0707
France 33-1-46-23-6060	Indonesia/Malaysia 62-21-570-7685 603-7874-9930	Portugal 351-2-1-781-6640	United Kingdom 44-1296-745-500
	Italy 39-06-406-96-1	Romania 40-1-231-13-81	Venezuela 58-212-285-9394

Place ESRI business partner or distributor address here.

Copyright © 2002 ESRI. All rights reserved. ESRI, the ESRI globe logo, the ArcGIS logo, ArcGIS, the Production Line Tool Set logo, @esri.com, and www.esri.com are trademarks, registered trademarks, or service marks of ESRI in the United States, the European Community, or certain other jurisdictions. Other companies and products mentioned herein are trademarks or registered trademarks of their respective trademark owners.



No. GS-35F-5086H